

FOR LEASE | INDUSTRIAL PROPERTY

18722 METROPOLITAN RD

LAREDO, TX 78045



FORUM
CRE



PROPERTY SPECIFICATIONS

Building Size:	56,640 SF
Available SF:	56,640 SF
Lot Size:	1.83 Acres
Dock Doors:	23 OHD & 2 Ramps
Clear Height:	22' - 24'
Trailer Parking:	36
Car Parking:	27
Zoning:	M-1

PROPERTY OVERVIEW

This is a sublease for a warehouse building available in north Laredo, Texas in Millennium Industrial Park. Building totals 56,640 SF and features 23 OHD and 2 ramps.

LOCATION OVERVIEW

Industrial building located in Millennium Industrial Park across from Pinnacle Industry Center. Pinnacle Industry Center is located 5 miles north of the World Trade Bridge and 13 miles south of the Colombia Bridge.

CARLO MOLANO, SIOR

carlom@forumcre.com

M: 956.523.9403

O: 956.717.9090

ALFONSO JASSO

alfonsoj@forumcre.com

M: 956.508.4203

O: 956.717.9090

FOR LEASE | INDUSTRIAL PROPERTY

18722 METROPOLITAN RD

LAREDO, TX 78045



FORUM
CRE



CARLO MOLANO, SIOR
carlom@forumcre.com
M: 956.523.9403
O: 956.717.9090

ALFONSO JASSO
alfonsoj@forumcre.com
M: 956.508.4203
O: 956.717.9090

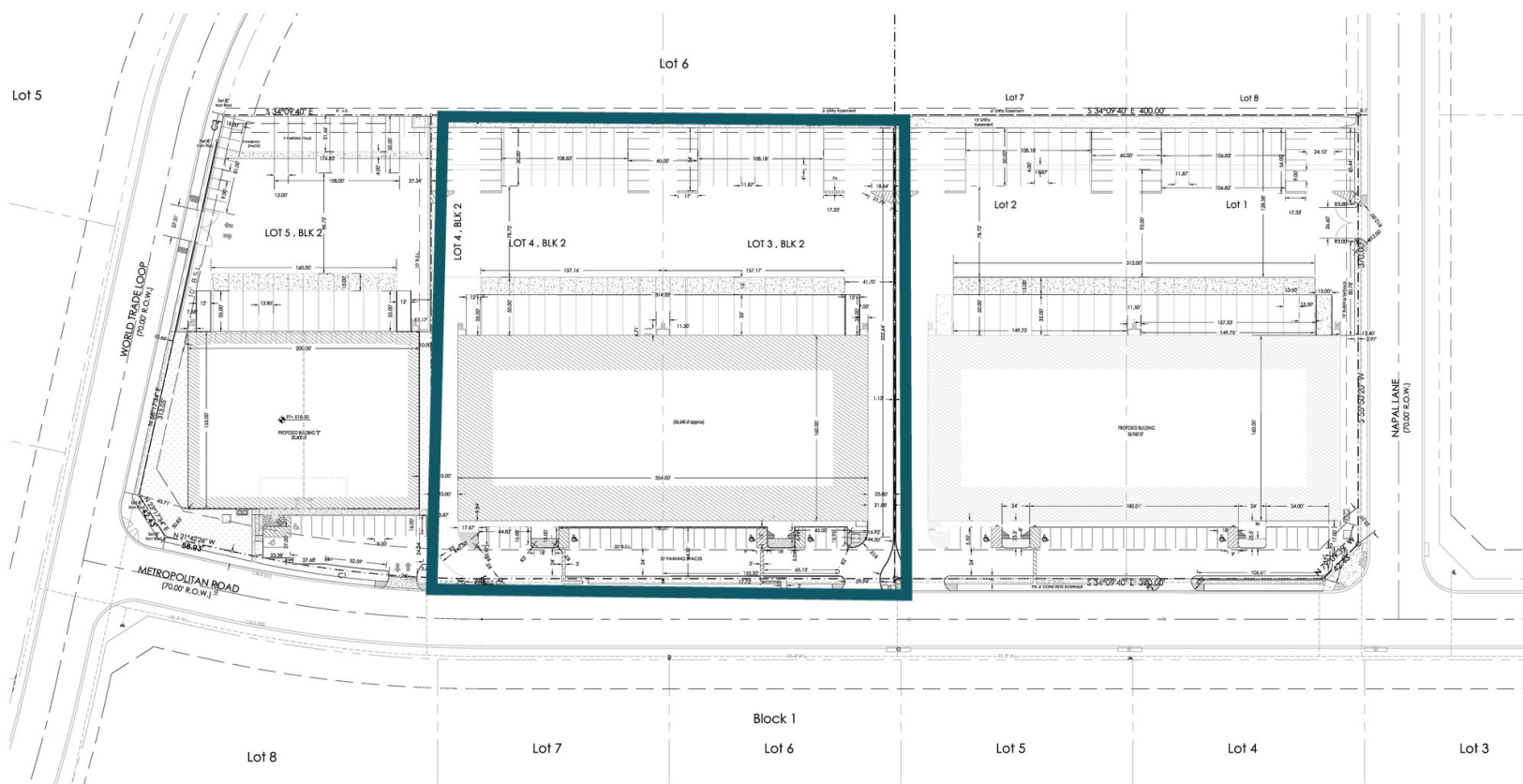
FOR LEASE | INDUSTRIAL PROPERTY

18722 METROPOLITAN RD

LAREDO, TX 78045



FORUM
CRE



CARLO MOLANO, SIOR
carlom@forumcre.com
M: 956.523.9403
O: 956.717.9090

ALFONSO JASSO
alfonsoj@forumcre.com
M: 956.508.4203
O: 956.717.9090

FOR LEASE | INDUSTRIAL PROPERTY

18722 METROPOLITAN RD

LAREDO, TX 78045



FORUM
CRE



Map data ©2024 INEGI Imagery ©2024 Airbus, CNES / Airbus, Landsat / Copernicus, Maxar Technologies

CARLO MOLANO, SIOR
carlom@forumcre.com
M: 956.523.9403
O: 956.717.9090

ALFONSO JASSO
alfonsoj@forumcre.com
M: 956.508.4203
O: 956.717.9090

