

FOR LEASE

715 Sherman St.
(IL Route 161)
Belleville, IL 62221



5,344 SF RETAIL/WAREHOUSE

BARBERMURPHY

COMMERCIAL REAL ESTATE SOLUTIONS
1173 Fortune Blvd., Shiloh, IL 62269
618.277.4400 BARBERMURPHY.COM

Matt Barriger
Broker Associate
Cell: (618) 973-5507
Mattb@barbermurphy.com

John Eichenlaub
Broker Associate
Cell: (314) 570-8344
Johne@barbermurphy.com



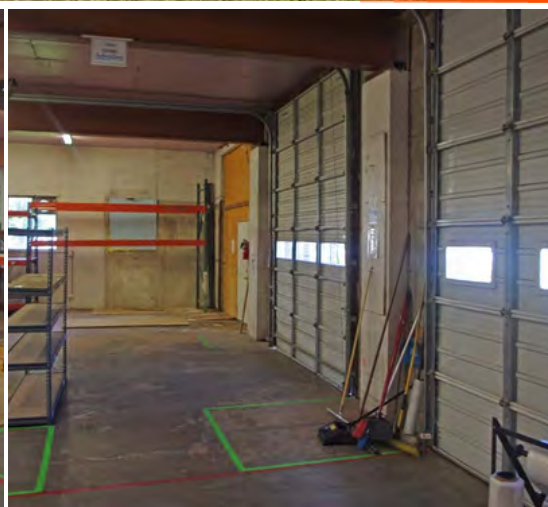
Information herein is not warranted and subject to change without notice. We assume no liability on items included in quoted price. Broker makes no representation as to the environmental condition of the offered property and recommends Purchaser's/Lessee's independent investigation.



Warehouse space features (1) 8 FT overhead door and (2) 12 FT Overhead doors.

5,300 + SF Retail/Warehouse

The clear span warehouse is heated with ventilation. It features 1,400 SF of showroom/retail area.



PROPERTY HIGHLIGHTS



Ventilation



12' Clear Height



(3) Overhead Doors



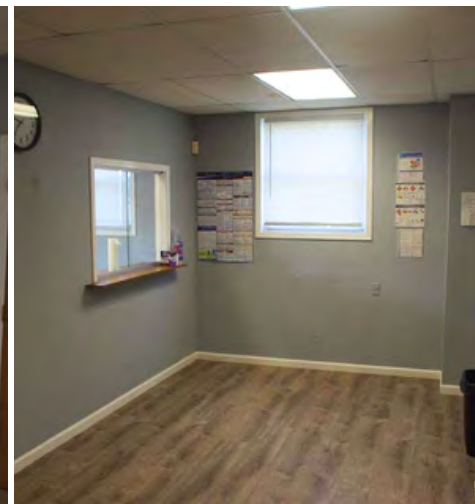
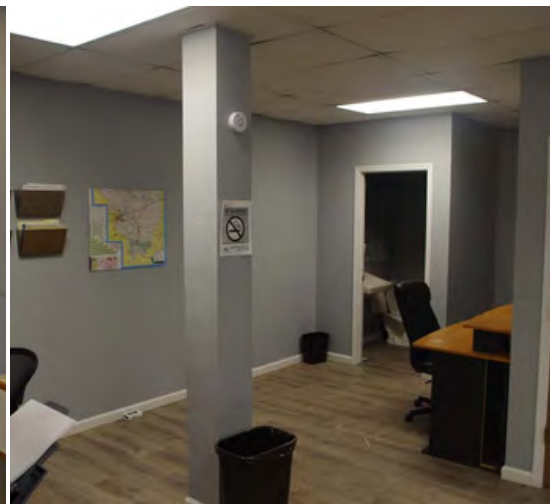
Heat



**800 SF
Office space
featuring
one private
office.**

The office area features a cubicle area, Restroom, waiting room and reception area.

800 SF Office



**PROPERTY
HIGHLIGHTS**



1
Office



Restroom



Cubical
Area



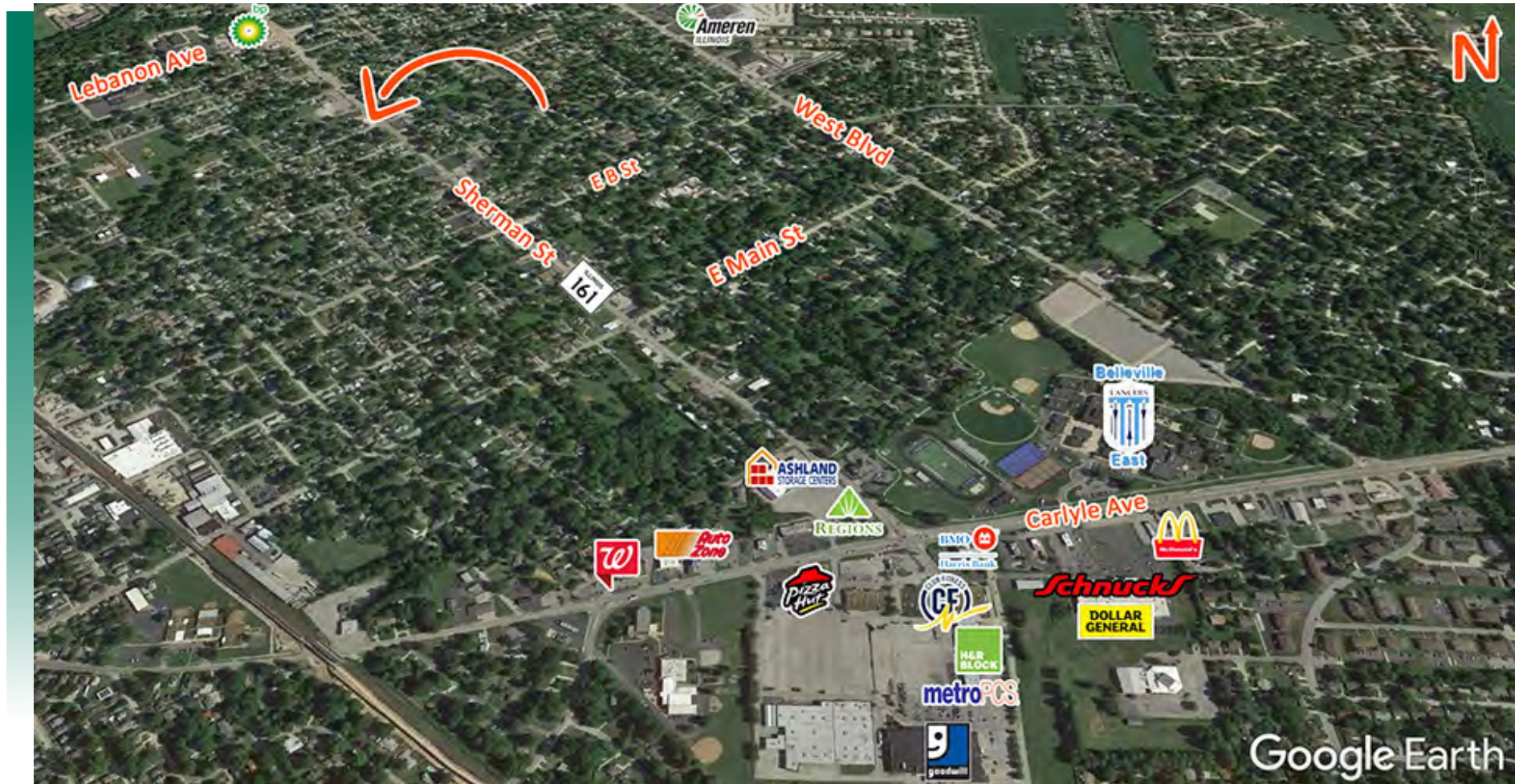
Waiting
Room



Reception
Area





AREA MAP

715 SHERMAN STREET, BELLEVILLE, IL 62221



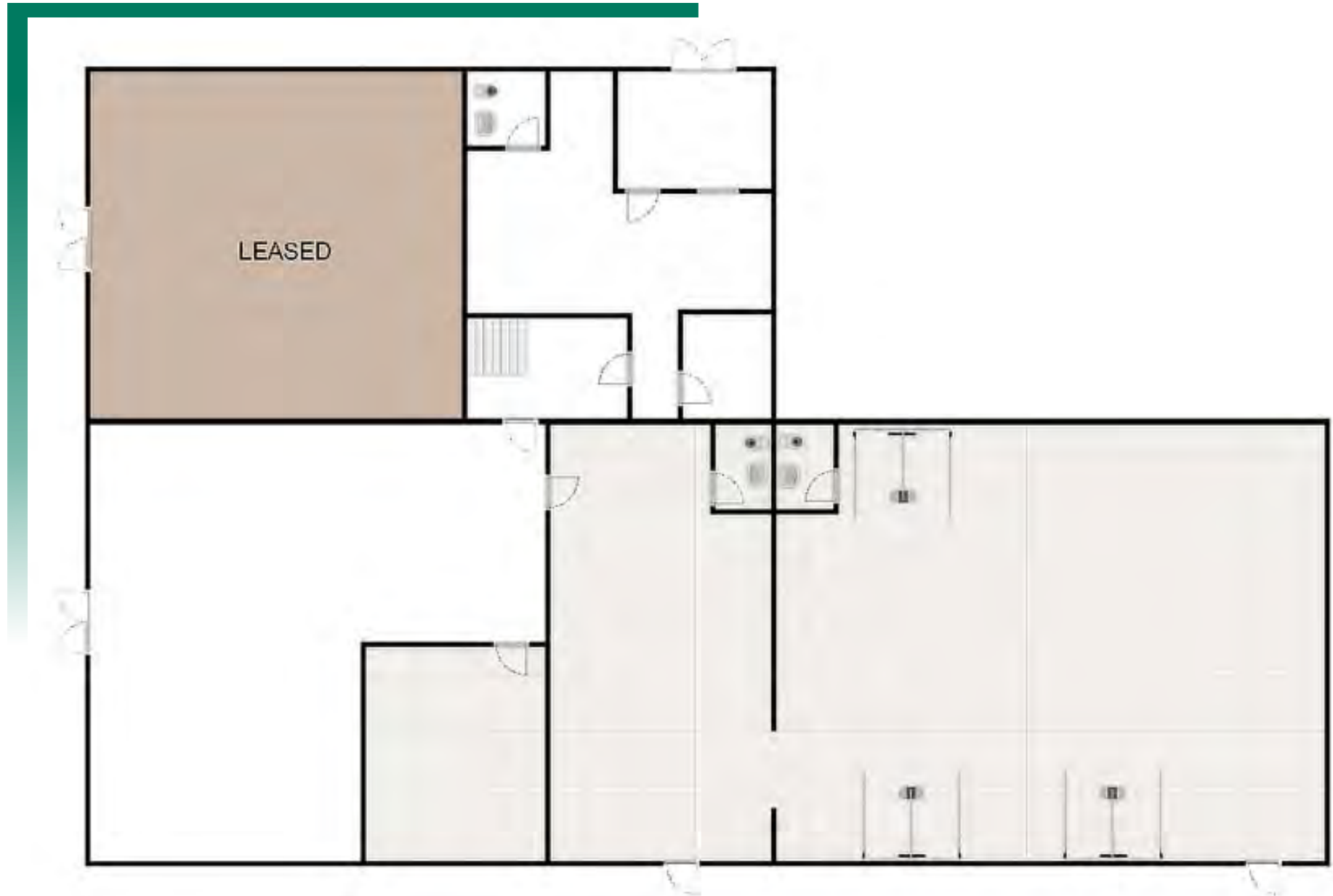
LOCATION OVERVIEW

The 5,300 + SF retail/warehouse is located directly off of Sherman Street (IL Route 161), adjacent to multiple retail users on Carlyle Avenue in Belleville, Illinois.

 11 Parking Spaces	 13,200 ADT
 Zoning: C-1 Light Commercial	 Signage

FLOOR PLAN

715 SHERMAN STREET, BELLEVILLE, IL 62221



PROPERTY PHOTOS

715 SHERMAN STREET, BELLEVILLE, IL 62221

BASEMENT



BASEMENT



SHOWROOM



SHOWROOM



RETAIL PROPERTY DESCRIPTION

#2809

715 SHERMAN STREET, BELLEVILLE, IL 62221

LEASE INFORMATION

FOR LEASE: YES
LEASE RATE: \$3,500/MONTH
LEASE TYPE: GROSS

SQUARE FOOT INFO:

BUILDING TOTAL: 6,464 SF
TOTAL AVAILABLE: 5,344 SF
DIRECT LEASE: 5,344 SF
SUBLEASE:
OFFICE: 800 SF
MIN DIVISIBLE: 5,344 SF
MAX DIVISIBLE: 5,344 SF

LAND MEASUREMENTS

ACRES: .42 ACERS

STRUCTURAL DATA:

YEAR BUILD: 1968
CLEARANCE MAX: 12'
EXTERIOR: BLOCK/
WOOD FRAME
FLOORS: 2
SIGNAGE: YES

PROPERTY INFORMATION:

PARCEL NO: 08-15.0-427-073

COUNTY: ST. CLAIR
ZONING: C-1
TRAFFIC COUNT: 13,200 ADT
PROPERTY TAX: \$9,346.86
TAX YEAR: 2022



Matt Barriger
Broker
Cell: (618) 973-5507
Mattb@barbermurphy.com

John Eichenlaub
Broker
Cell: (314) 570-8344
Johne@barbermurphy.com