

1205 NORTH MAIN STREET

FOR LEASE



PROPERTY DETAILS

1205 North Main Street, Logan, UT 84341

- 1,905 SF Quietly Marketed- Do Not Disturb Tenant
- Asking Lease Rate: \$30 PSF + NNN (\$5.50/PSF)
- Grocery Anchored Pad
- Located in the Heart of Logan's Retail Center
- Possible Drive-Thru Addition to Backside of Building
- Contact Agents for Pricing

SURROUNDING TENANTS



2025 DEMOS



EST. POPULATION

1 MILE » 21,003
3 MILE » 70,270
5 MILE » 95,795



EST. HOUSEHOLDS

1 MILE » 7,750
3 MILE » 23,872
5 MILE » 31,244



EST. AVERAGE HH INCOME

1 MILE » \$67,116
3 MILE » \$89,586
5 MILE » \$103,007



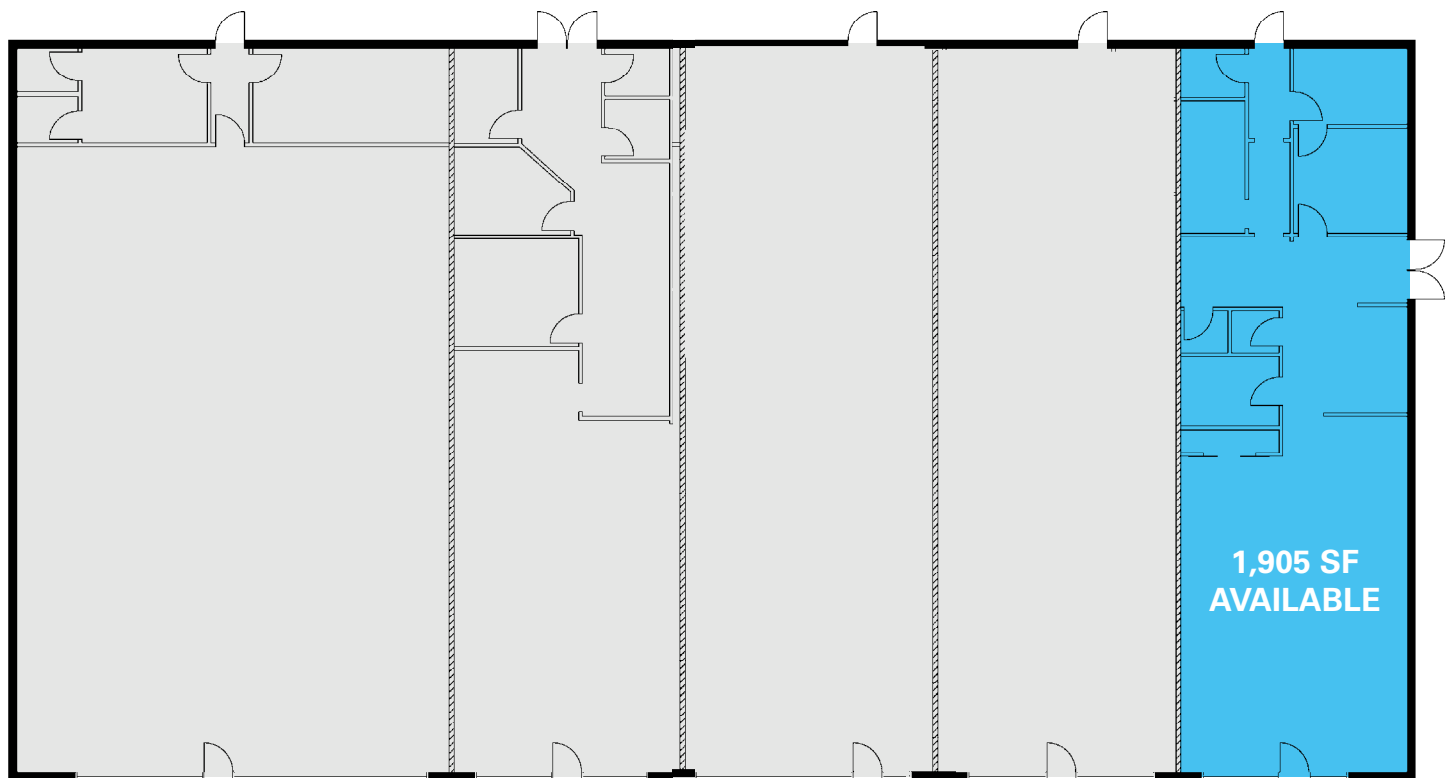
RYAN STEWART
rstewart@newmarkmw.com
direct 801.578.5541
[View Profile](#)

SCOTT BRADY
sbrady@newmarkmw.com
direct 801.456.8804
[View Profile](#)

**FULL SERVICE
COMMERCIAL REAL ESTATE**
312 East South Temple
Salt Lake City, Utah 84111
Office 801.456.8800
www.newmarkmw.com

1205 NORTH MAIN STREET

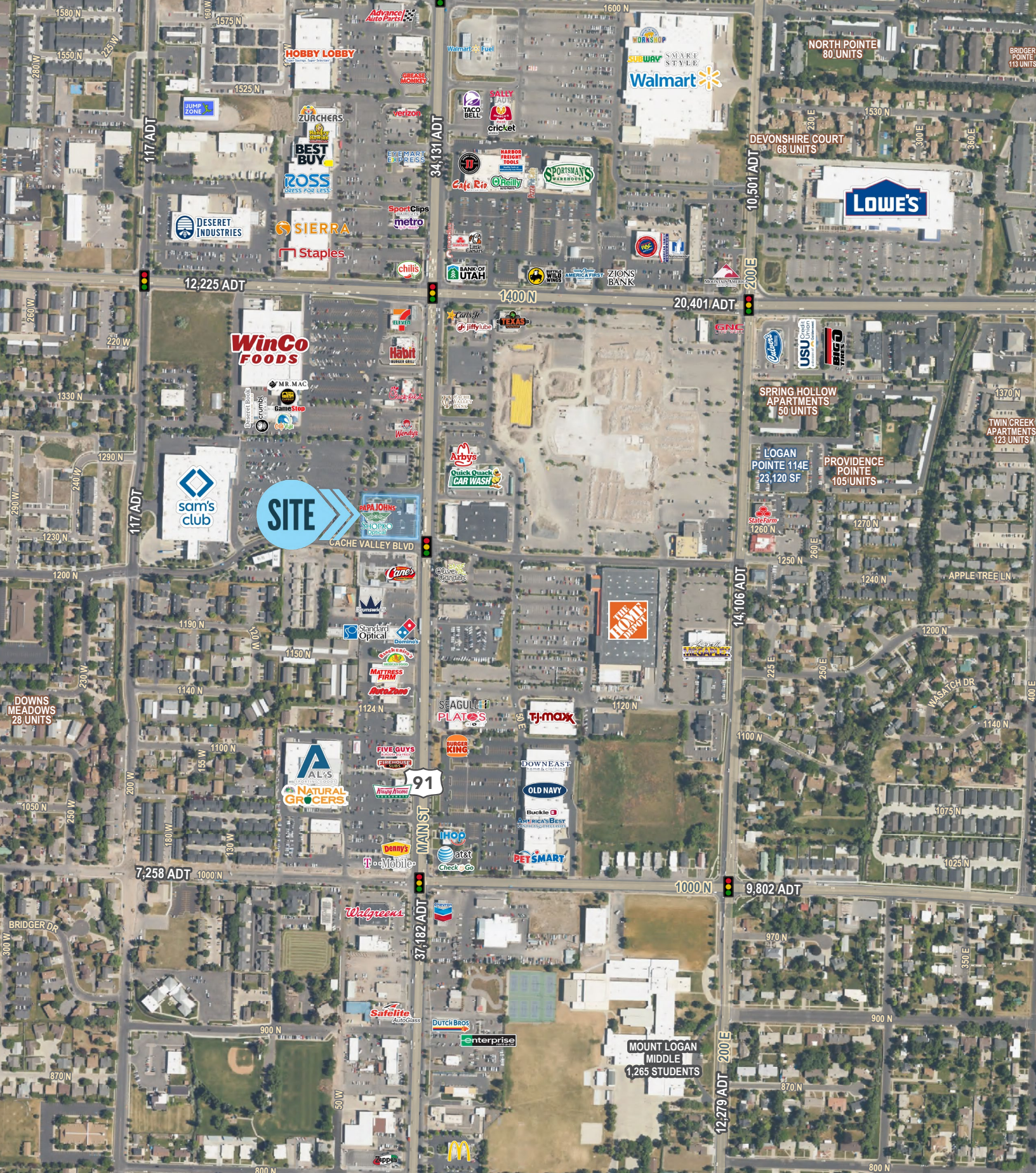
FLOOR PLAN



RYAN STEWART
rstewart@newmarkmw.com
direct 801.578.5541
[View Profile](#)

SCOTT BRADY
sbrady@newmarkmw.com
direct 801.456.8804
[View Profile](#)

**FULL SERVICE
COMMERCIAL REAL ESTATE**
312 East South Temple
Salt Lake City, Utah 84111
Office 801.456.8800
www.newmarkmw.com



SITE

NEWMARK
MOUNTAIN WEST

RYAN STEWART
rstewart@newmarkmw.com
direct 801.578.5541
[View Profile](#)

SCOTT BRADY
sbrady@newmarkmw.com
direct 801.456.8804
[View Profile](#)

**FULL SERVICE
COMMERCIAL REAL ESTATE**
312 East South Temple
Salt Lake City, Utah 84111
Office 801.456.8800
www.newmarkmw.com