

For information:

Mike Ord

mike@dlslaughter.com

David Slaughter

dslaughter@dlslaughter.com

T 602.957.3553

F 602.957.9829



Property Managed By:



JOIN:



And neighbors:



Available: Chuy's Restaurant building available. – 9,100sf
Shop space – 3,990sf (ideal for daycare)
Shop space – 1,660sf

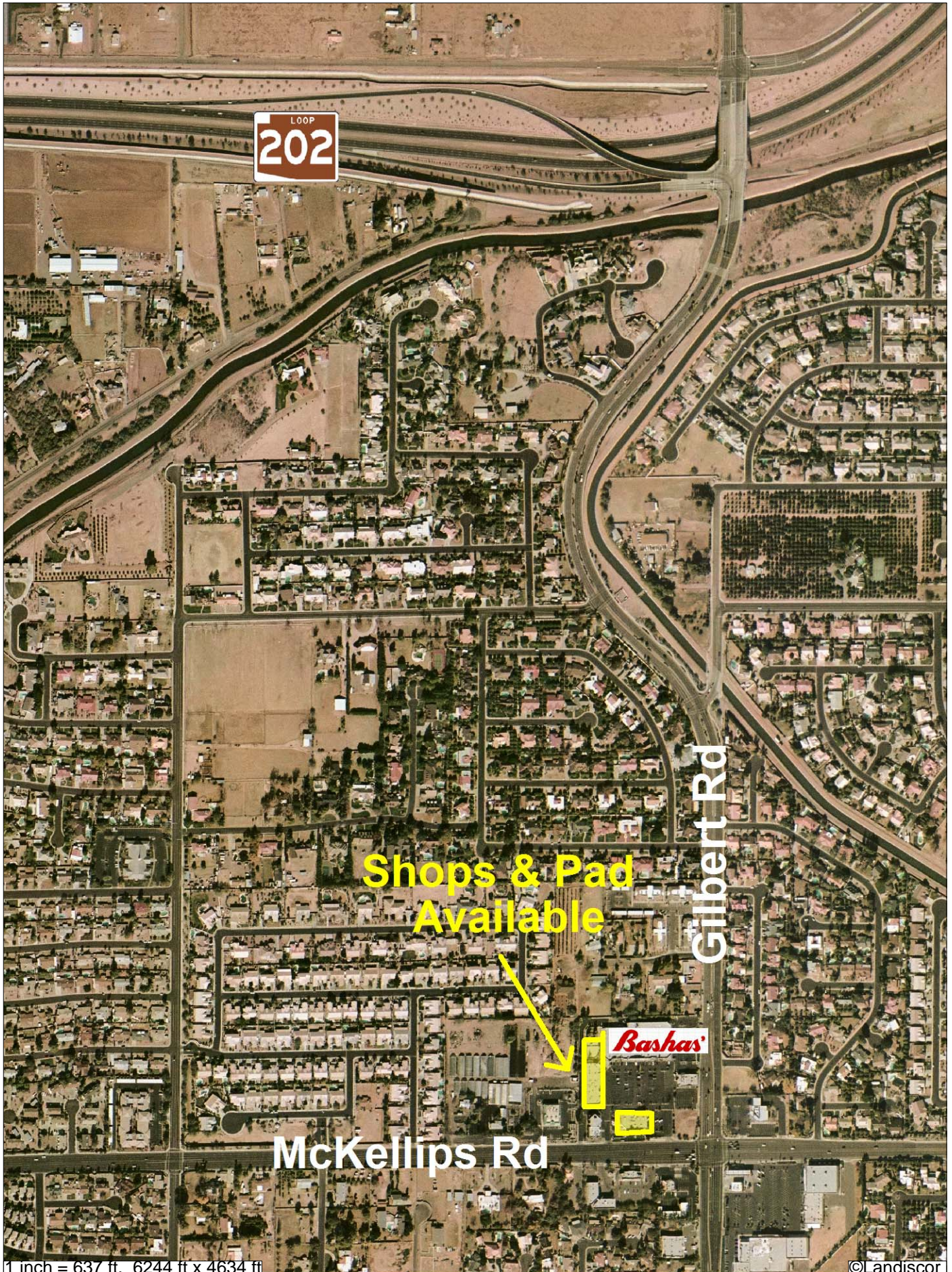
Rent: Please call for rental rates.

Location Highlights:

- Convenient to upscale North Mesa neighborhoods.
- Average household incomes are some of the highest in the Valley.

	<u>1 Miles</u>	<u>3 Miles</u>	<u>5 Miles</u>
Population: 2014 Projection	15,802	101,168	270,919
2009 Estimated	15,240	97,062	244,361
Average HH Income (2009):	\$99,720	\$69,741	\$59,749

The information contained herein has either been given to us by the property or obtained from sources that we deem reliable. We have no reason to doubt its accuracy but we do not guarantee it. Vacancy factors used herein are the arbitrary percentage used only as an example. It does not necessarily relate to actual vacancy, if any. The value of this investment is dependent upon these estimates and assumptions made above, as well as the investment income, the tax bracket, and other factors which your tax advisor and/or legal counsel should evaluate. THE PROSPECTIVE BUYER SHOULD CAREFULLY VERIFY EACH ITEM OF INCOME, EXPENSE AND ALL OTHER INFORMATION CONTAINED HEREIN.



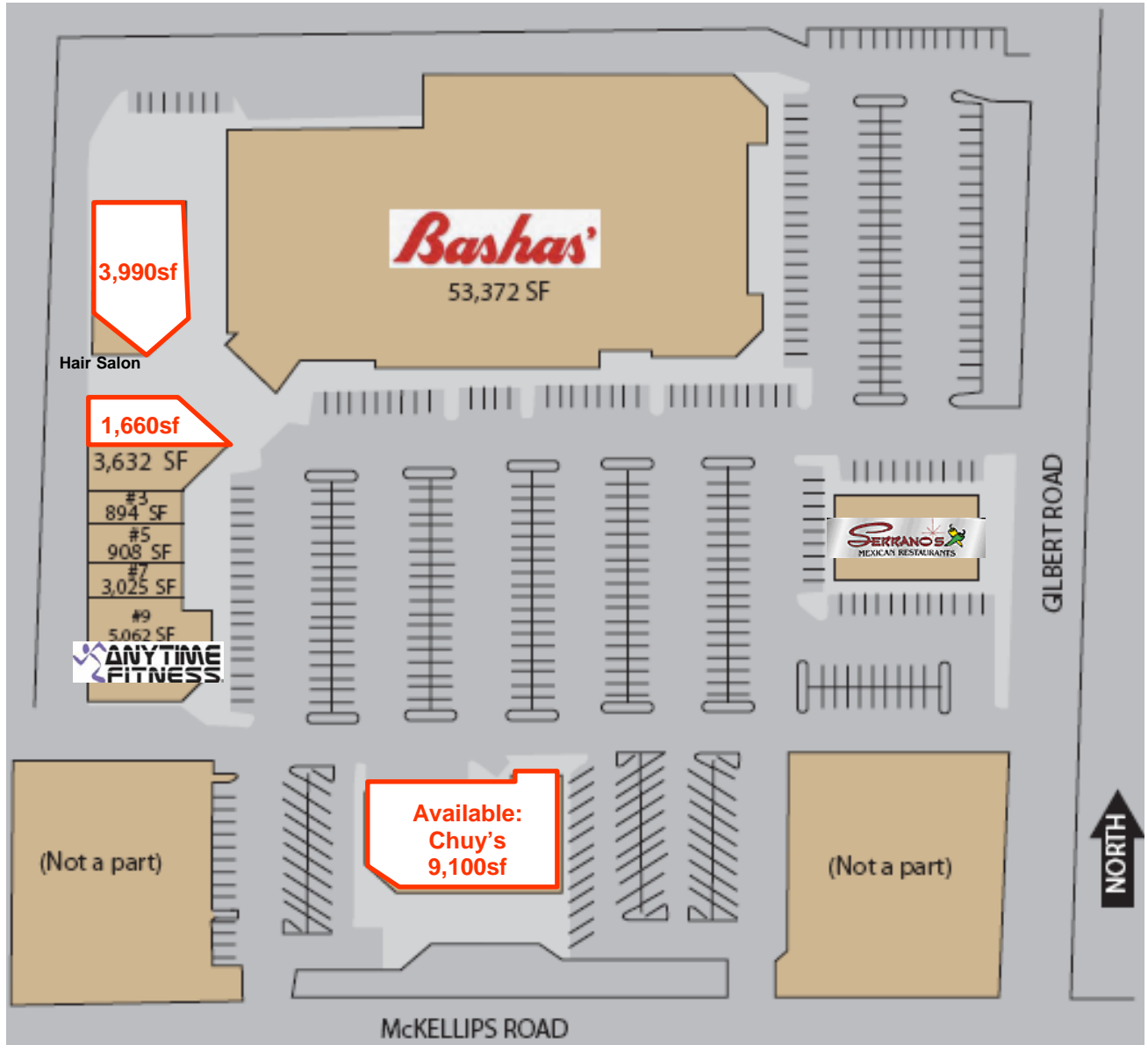
LOOP
202

Shops & Pad
Available

Gilbert Rd

Bashas

McKellips Rd



3,990sf

1,660sf

3,632 SF

#3
894 SF

#5
908 SF

#7
3,025 SF

#9
5,062 SF

ANYTIME
FITNESS

Available:
Chuy's
9,100sf

(Not a part)

(Not a part)

McKELLIPS ROAD

GILBERT ROAD

NORTH

SUMMARY DEMOGRAPHIC PROFILE

1990 - 2000 Census, 2009 Estimates & 2014 Projections

Calculated using Proportional Block Groups

D. L. Slaughter
Company

Lat/Lon: 33.451789/-111.787607

October 2009

RS1

E Mckellips Rd & N Gilbert Rd Mesa, Arizona		1.00 mi radius	3.00 mi radius	5.00 mi radius
POPULATION	2009 Estimated Population	15,240	97,062	244,361
	2014 Projected Population	15,802	101,168	270,919
	2000 Census Population	13,350	92,083	232,229
	1990 Census Population	10,170	74,453	188,497
	Historical Annual Growth 1990 to 2009	2.6%	1.6%	1.6%
	Projected Annual Growth 2009 to 2014	0.7%	0.8%	2.2%
	2009 Median Age	34.0	33.0	34.0
HOUSEHOLDS	2009 Estimated Households	4,305	31,048	80,711
	2014 Projected Households	4,177	30,441	84,018
	2000 Census Households	4,100	32,074	83,323
	1990 Census Households	3,052	26,448	68,943
	Historical Annual Growth 1990 to 2009	2.2%	0.9%	0.9%
Projected Annual Growth 2009 to 2014	-0.6%	-0.4%	0.8%	
POPULATION BY RACE	2009 Estimated White	88.5%	81.9%	78.9%
	2009 Estimated Black or African American	1.9%	3.4%	3.5%
	2009 Estimated Asian & Pacific Islander	2.6%	2.3%	2.3%
	2009 Estimated American Indian & Native Alaskan	1.0%	1.9%	2.3%
	2009 Estimated Other Races	6.1%	10.6%	13.1%
	2009 Estimated Hispanic	16.8%	26.2%	30.3%
INCOME	2009 Estimated Average Household Income	\$ 99,720	\$ 69,741	\$ 59,749
	2009 Estimated Median Household Income	\$ 89,964	\$ 62,614	\$ 54,292
	2009 Estimated Per Capita Income	\$ 28,319	\$ 22,536	\$ 20,059
EDUCATION (AGE 25+)	2009 Elementary	2.4%	6.1%	8.3%
	2009 Some High School	4.5%	7.6%	9.2%
	2009 High School Graduate	23.3%	26.3%	28.5%
	2009 Some College	23.8%	24.7%	23.9%
	2009 Associates Degree Only	7.7%	8.6%	8.0%
	2009 Bachelors Degree Only	24.5%	17.1%	14.4%
	2009 Graduate Degree	13.8%	9.8%	7.6%
BUSINESS	Number of Businesses	305	2,333	7,383
	Total Number of Employees	2,630	22,352	83,569
	Employee Population per Business	8.6	9.6	11.3
	Residential Population per Business	50.0	41.6	33.1

This report was produced using data from private and government sources deemed to be reliable. The information herein is provided without representation or warranty.