

FOR LEASE

446 E High Street, Lexington, KY 40507

\$16.50 /SF/YR



Property Details

Building Size: 18,427 SF

Property Type: Office

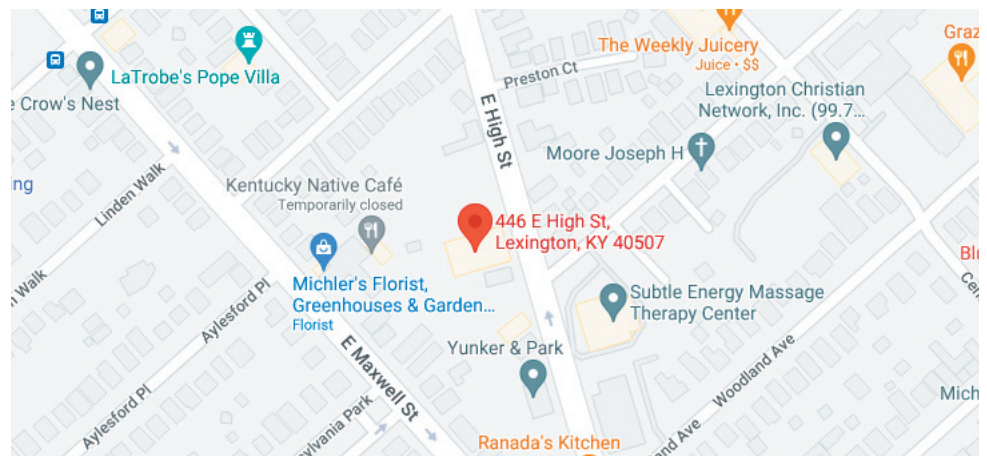
Lot Size: 1.2 AC

Year Built: 1958

Tenancy: Multiple

Parking: 55 Spaces

Zoning: P-1 - Professional Office



Impressive, modern, creative space with ample free surface parking on East High Street. Plenty of natural light and many renovations including restrooms (with shower) and breakrooms. High visibility, move-in ready, and conveniently located near the University of Kentucky, downtown, Woodland Park, and Chevy Chase restaurants and retail. Personal training facility on-site and just steps away from Kentucky Native Cafe. Flexible floor plans and the ability to grow your business.



JAMES M. SCHRADER

859-288-5008

jschrader@schradercommercial.com

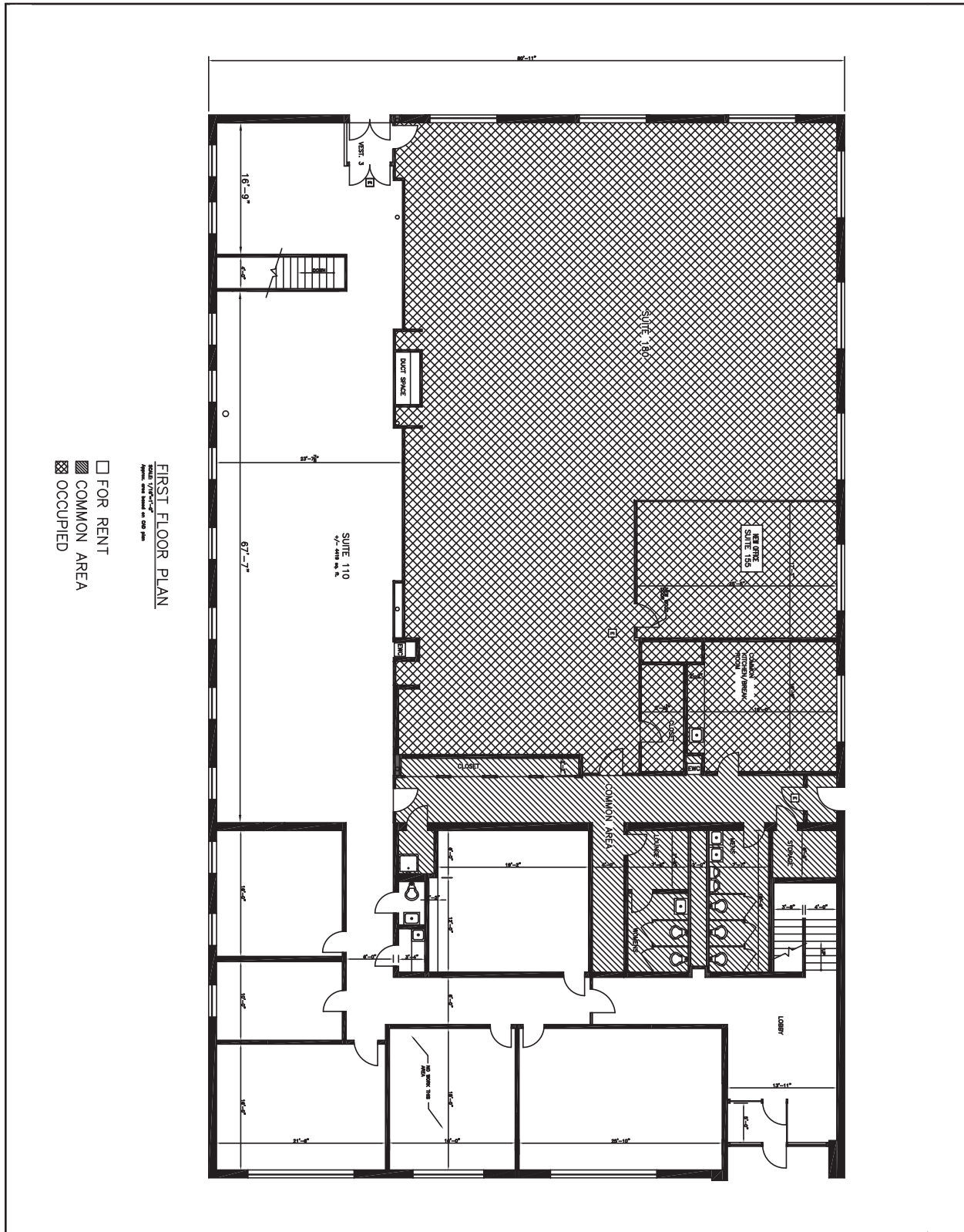
444 E Main Street, Suite 110
PO Box 21793 Lexington, KY 40522

SCHRADER
COMMERCIAL PROPERTIES, LLC

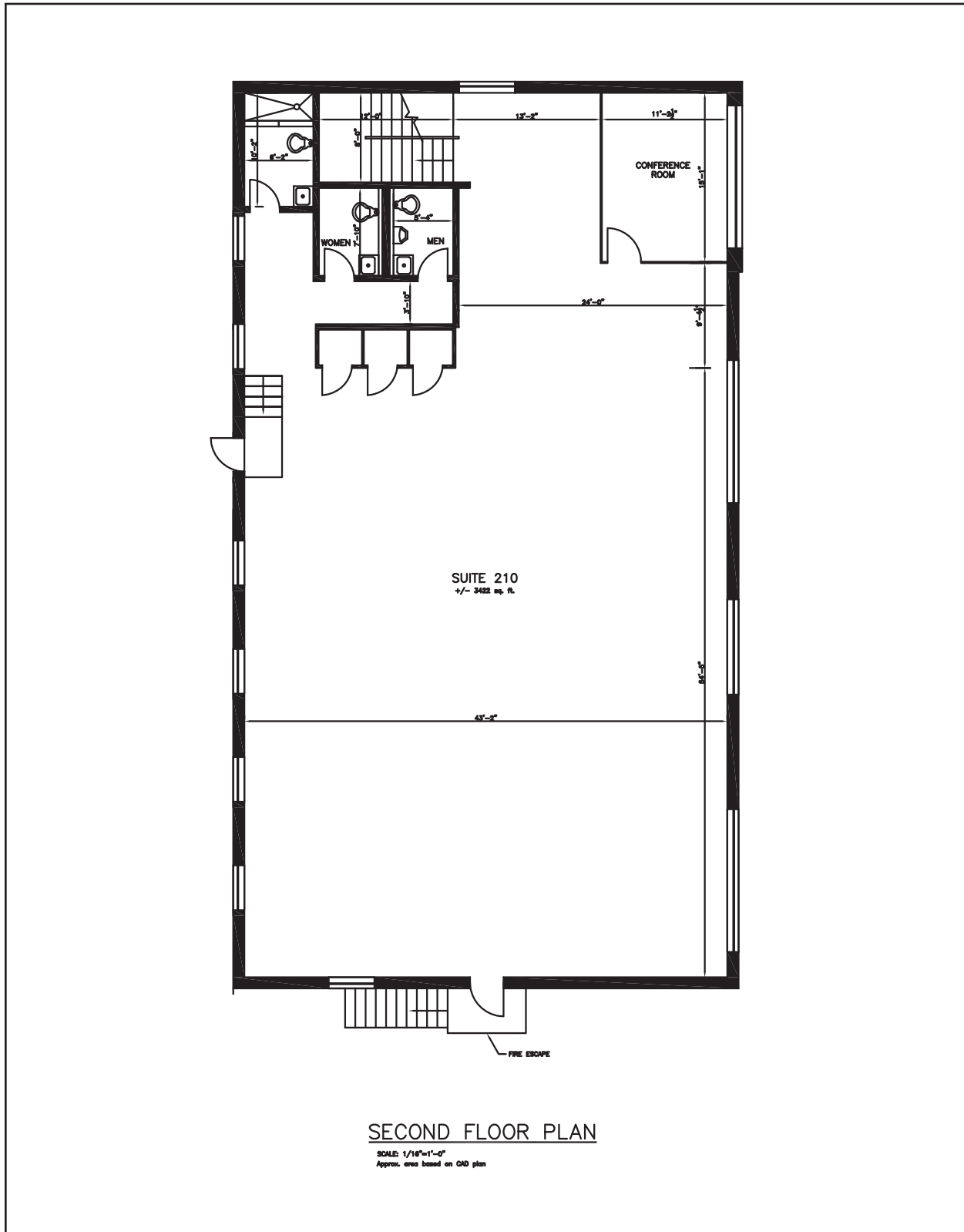
859-288-5008 / schradercommercial.com

The information contained herein is from sources believed, but not guaranteed to be reliable. Schrader Commercial Properties, LLC makes no representations or warranties regarding the property and you should conduct a careful independent investigation of the property to determine its suitability for your use and investment.

Suite 110 - 4,419 SF



Suite 210 - 3,422 SF



Property Images



Property Images

