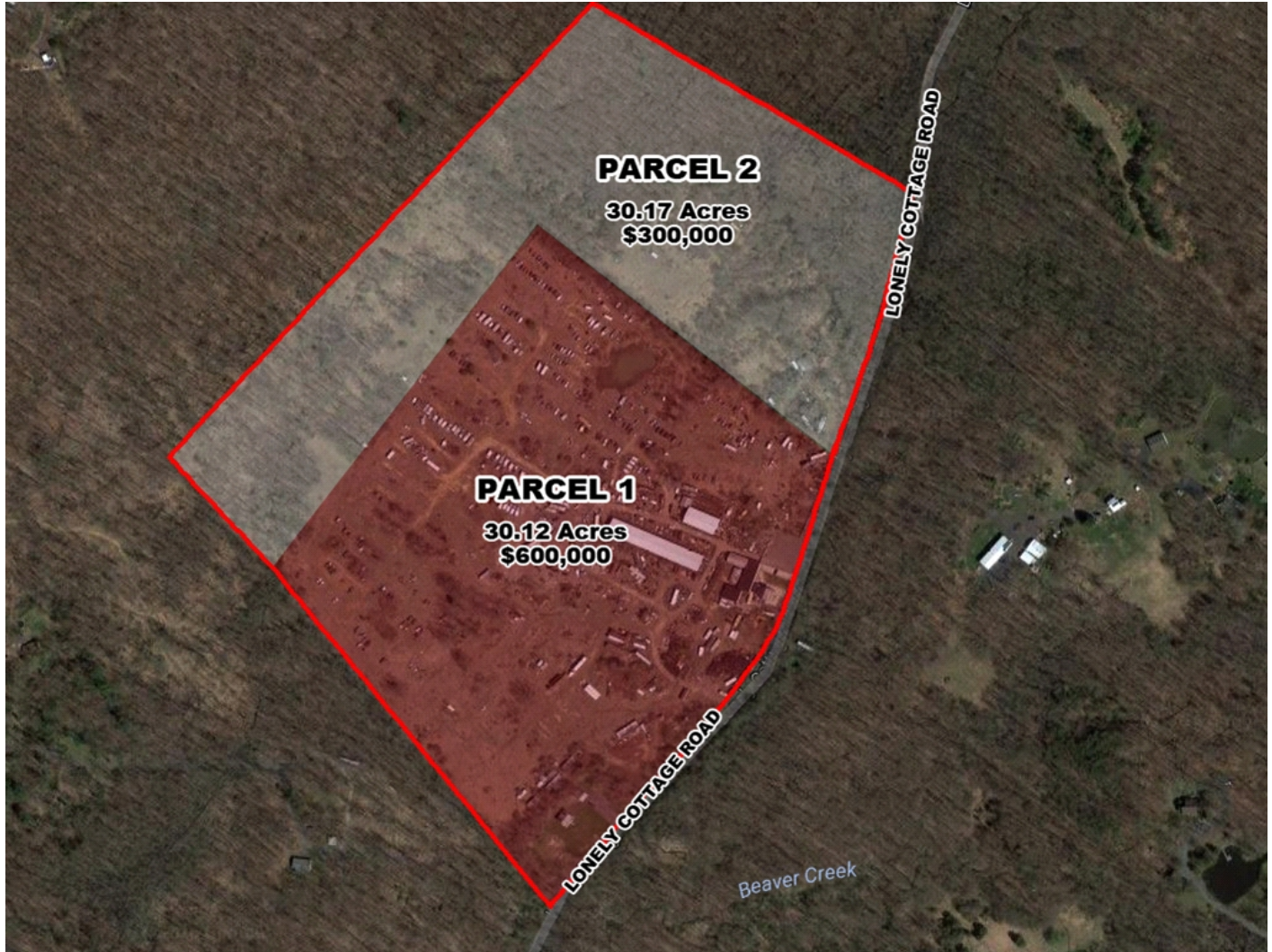


1138 Lonely Cottage Road

Bridgeton Township, Bucks County, Upper Black Eddy, PA 18972



For Sale: Two Parcels, 60.29 Acres



Parcel 1

- ◆ 30.12 acres, zoned R-3
- ◆ Well/Septic
- ◆ Taxes \$10,510 - Tax ID 03-002-011
- ◆ Approved for Auto Salvage
- ◆ Two warehouses - 40'x80' and 40'x160'
- ◆ Two car garages
- ◆ Two-story single home

Parcel 2

- ◆ 30.17 acres, zoned R-3
- ◆ No well/septic
- ◆ Taxes \$2,817 - Tax ID 03-002-009
- ◆ Approved for Auto Salvage

Newmark Grubb
Knight Frank

Jim Thackray Director **215.416.2497** jthackray@ngkf.com

880 E. Swedesford Road, Wayne, PA 19087 Office: 610.265.0600

The information contained herein has been obtained from sources deemed reliable but has not been verified and no guarantee, warranty or representation, either express or implied, is made with respect to such information. Terms of sale or lease and availability are subject to change or withdrawal without notice.