

FOR LEASE

FREEPORT VILLAGE SQUARE

5
DEPOT STREET

Freeport, Maine



RETAIL/OFFICE FOR LEASE

Join numerous national and local retailers in the heart of Downtown Freeport, home to over 3.5 million visitors annually. Three suites are currently available at Village Square, directly across from L.L. Bean and Freeport Village Station.

- + Village Square is located on the corner of Depot Street and Bow Street.
- + 3,081 ± SF and 3,969 ± SF first floor suites
4,538 ± SF second floor office suite
- + 75 ± on-site parking spaces with additional parking in municipal lots and the Village Station parking garage
- + Lease Rates: \$13.00 - \$14.00/sf Modified Gross



CBRE | The Boulos Company

Part of the CBRE affiliate network

One Canal Plaza, Ste 500
Portland, ME 04101
207.772.1333
www.boulos.com

FOR LEASE FREEPORT VILLAGE SQUARE



PROPERTY DETAILS

Building Size	21,184± SF
No. of Stories	Two (2)
Zoning	VCI - Village Commercial
HVAC	Thirteen (13) above-ceiling heat pumps controlled by individual programmable thermostats. Propane furnace and ground-mounted cooling tower temper the water loop.
Sprinkler	Full sprinkler system throughout
Water/Sewer	Municipal
Signage	Available on building facade and pylon directory
Parking	75± on-site parking spaces with additional parking in area lots and public garage
Proximity to Transportation	Less than two (2) miles to I-295 and I-95 Freeport Exit
Other Tenants	Wildflower, CompuPay, Maine Optometry, Casco Bay Cutlery and Kitchenware and Petrillo's

SUITE AVAILABILITY

Size (SF)	Floor	Lease Rate
3,081 ± SF	First Floor Retail/Office	\$14.00/sf MG
3,969 ± SF	First Floor Retail/Office	\$14.00/sf MG
4,538 ± SF	Second Floor Office	\$13.00/sf MG

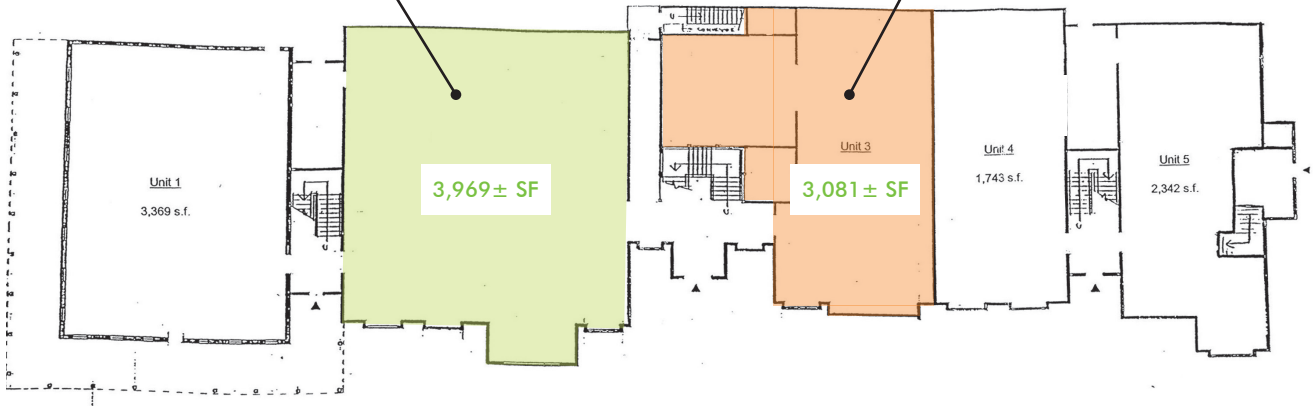
Lease rate includes heat.



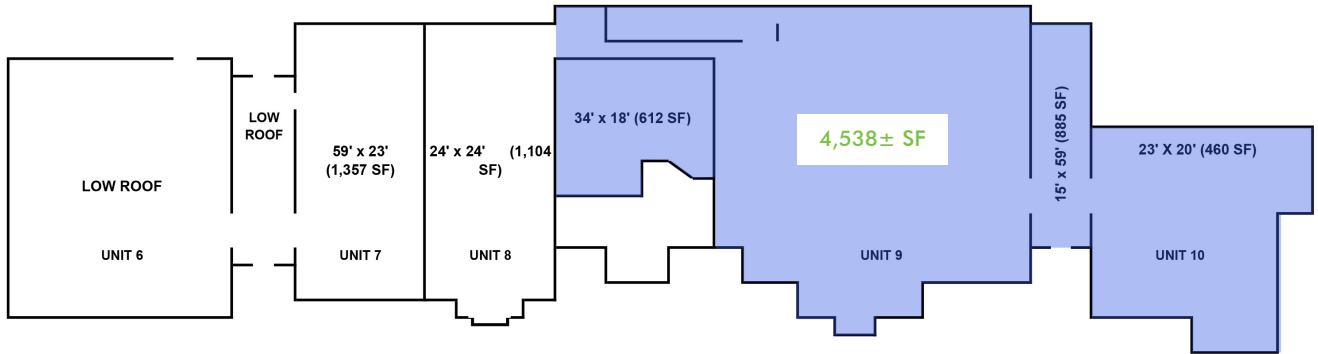
L.L. Bean's flagship store and Freeport's Village Station welcome over 3.5 million visitors a year.



FIRST FLOOR PLAN

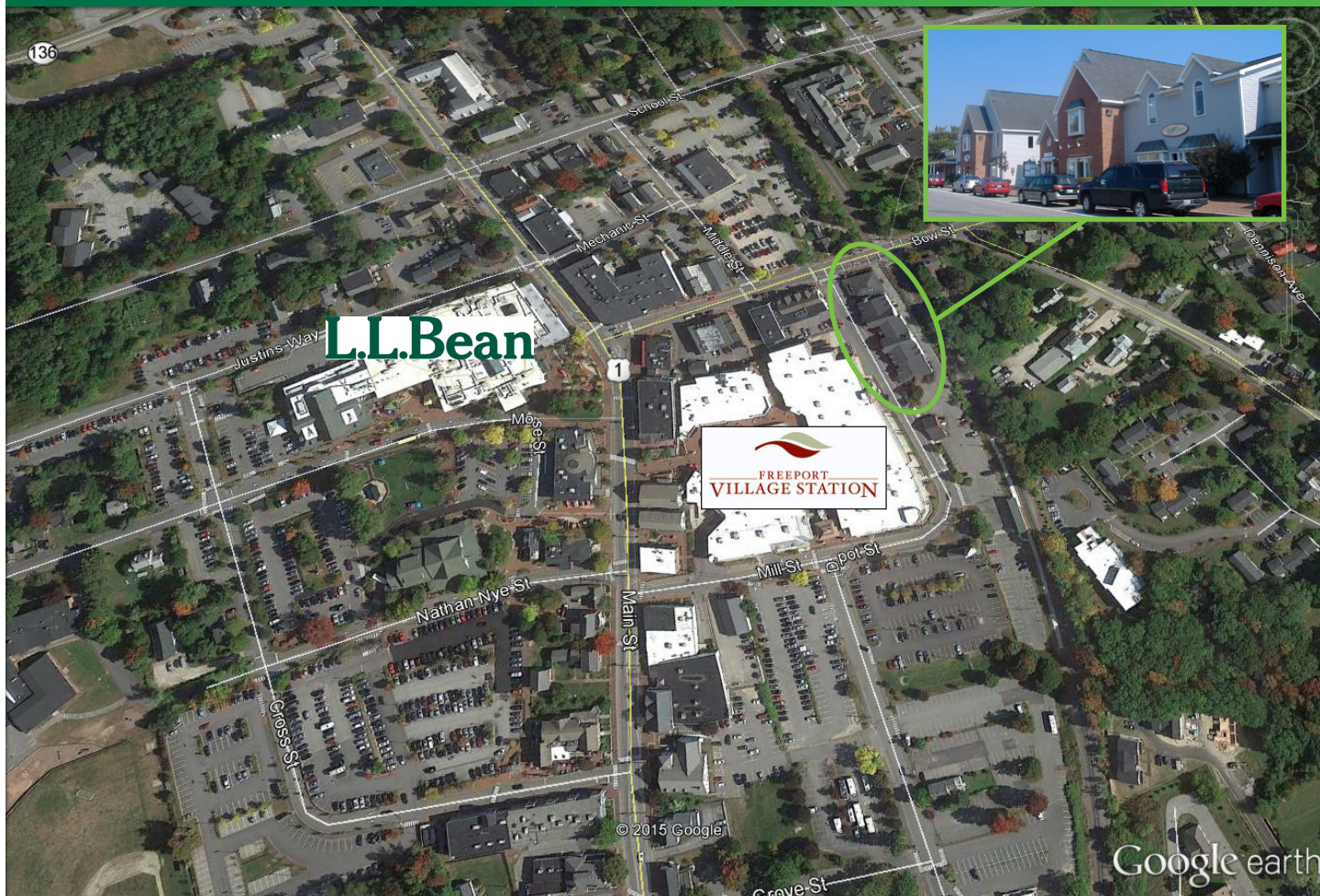


SECOND FLOOR



FOR LEASE FREEPORT VILLAGE SQUARE

5
DEPOT STREET
Freeport, Maine



CONTACT US



CATIE SEAVEY
Associate
+1 207 772 1333
cseavey@boulos.com

©2016 The Boulos Company, Inc. - We obtained the information above from sources we believe to be reliable. However, we have not verified its accuracy and make no guarantee, warranty or representation about it. It is submitted subject to the possibility of errors, omissions, change of price, rental or other conditions, prior sale, lease or financing, or withdrawal without notice. We include projections, opinions, assumptions or estimates for example only, and they may not represent current or future performance of the property. You and your tax and legal advisors should conduct your own investigation of the property and transaction. We represent the Seller/Landlord, and, as such, has a fiduciary duty to disclose to the Seller/Landlord information which is material to the Sale/Lease, acquired from the Buyer/Tenant or any other source, except in cases of disclosed dual agency. Photos herein are the property of their respective owners and use of these images without the express written consent of the owner is prohibited.

CBRE | The Boulos Company

Part of the CBRE affiliate network

One Canal Plaza, Ste 500
Portland, ME 04101
207.772.1333
www.boulos.com