

OFFICE SPACE

FOR LEASE



20475 SW Avery Court | Tualatin, OR

SITE SPECS & INFORMATION

- » +/- 2,900 SF
- » Secure Entrance to Second Floor
- » Four Private Offices, Large Common Area, Break Room, Two Restrooms
- » Avery Street Sign Frontage
- » Lease Term Flexibility
- » Landlord Will Carpet and Paint
- » \$2,900/ Month Full Service

MARK CHILDS, SIOR

Principal

P. 503.542.4350

E. markc@capacitycommercial.com

DANIEL HELM

Associate Broker

P. 503.542.2899

E. dhelm@capacitycommercial.com

DANIEL SAYLES

Associate Broker

P. 503.542.4351

E. dsayles@capacitycommercial.com

— Proud member of: —

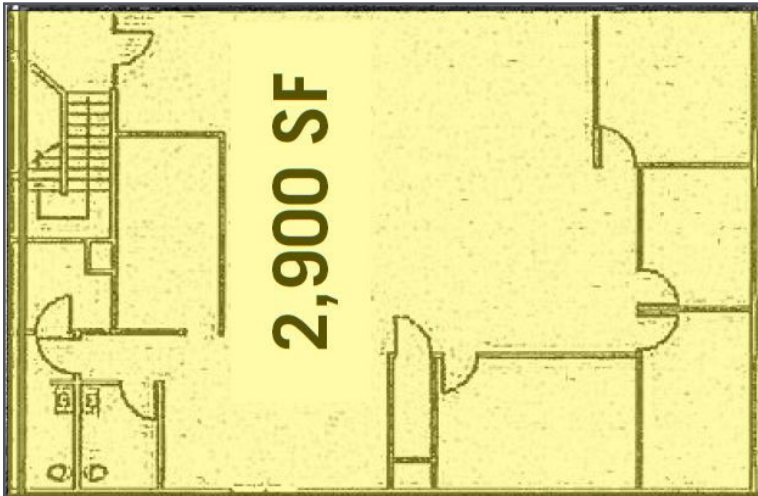
CORFAC
International

The information contained herein is believed to be accurate but is not warranted as to its accuracy and may change or be updated without notice. Seller or Landlord makes no representation as to the environmental condition of the property and recommends purchaser's or tenant's independent investigation.



OFFICE SPACE

FOR LEASE



CONTACT US

CAPACITY COMMERCIAL GROUP 805 SW Broadway, Suite 700 Portland, OR | 97205

PHONE. 503.326.9000 | EMAIL. info@capacitycommercial.com | WEB. www.capacitycommercial.com

MARK CHILDS, SIOR

Principal

P. 503.542.4350

E. markc@capacitycommercial.com

DANIEL HELM

Associate Broker

P. 503.542.2899

E. dhelm@capacitycommercial.com

DANIEL SAYLES

Associate Broker

P. 503.542.4351

E. dsayles@capacitycommercial.com

— Proud member of: —



The information contained herein is believed to be accurate but is not warranted as to its accuracy and may change or be updated without notice. Seller or Landlord makes no representation as to the environmental condition of the property and recommends purchaser's or tenant's independent investigation.