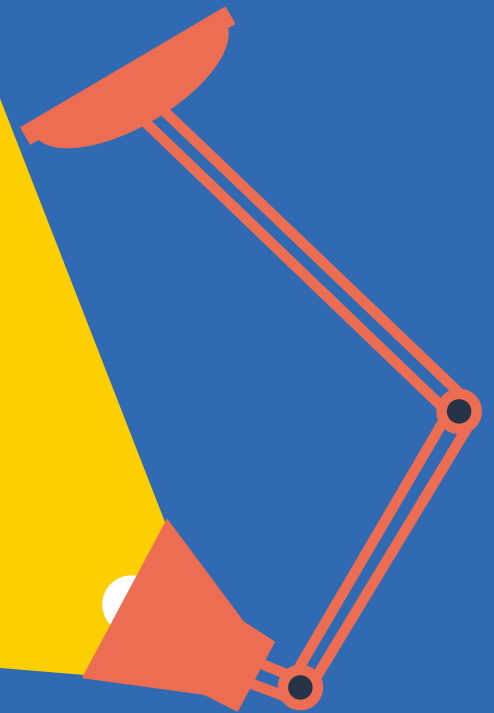


CITY T^oWER

**Fully fitted, fully managed workspaces,
ready to move in.**

**This isn't co-working;
it's the best bits of a
serviced office, with
added benefits.**





Exclusively yours

It's your own private workspace. You'll have your own front door, meeting spaces and kitchen. There's plenty of space to brand your way.



Alive with technology

Our smart workplace app, sesame™, allows you to make more of every day and connects you with our friendly on-site team. 10GB fibre-capable building, fast and reliable Wi-Fi comes as standard.



Owned and managed by us, Great Portland Estates

Proven workplace experts on hand to make sure your office runs like clockwork. You deal directly with us, there's no middle man.



Thoughtfully designed, fitted and managed

Our top quality workspaces are sustainably designed and expertly managed. Fully equipped and always looked after.



Flexible lease terms, straightforward contract, all in one bill

With a quick and simple sign up process, it's always hassle free.



How we manage your space

- Community manager
- Food & beverage
- Cleaning service
- sesame - our smart workplace app
- Concierge service
- Handyman service
- Landscaping and planting
- Helpdesk
- Waste management
- Health & safety
- Pest control
- MEPH maintenance
- Decorating/building works

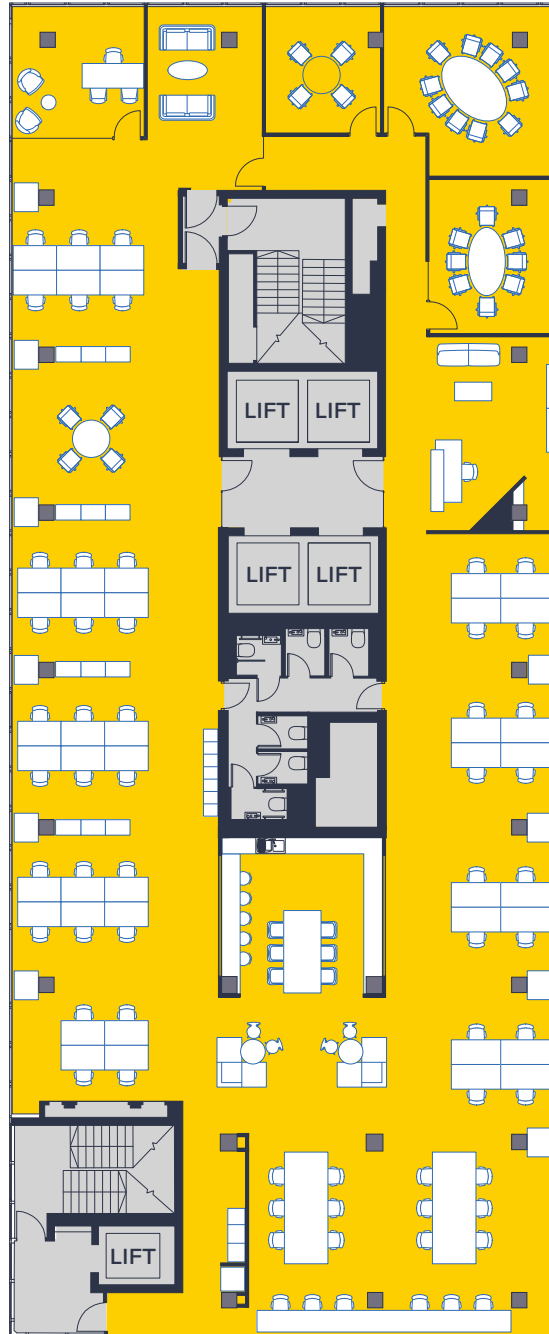
IT service

- Private networks for private workspaces (1GB switches, firewall and flood wired CAT 6 cabling)
- Guest Wi-Fi throughout
- Wi-Fi 6 ready for ultra-fast connectivity
- AV screen in meeting room(s) with ClickShare capability
- An expert on hand to get you started and make sure your IT infrastructure runs smoothly

L17 space plan

6,363 sq ft / 591 sq m

Basinghall Street



- Desks and chairs for 64 people (44 fixed desks)
- 3 meeting rooms (4/8/10 people)
- 1 executive office
- Kitchen area/breakout
- Dedicated welcome space

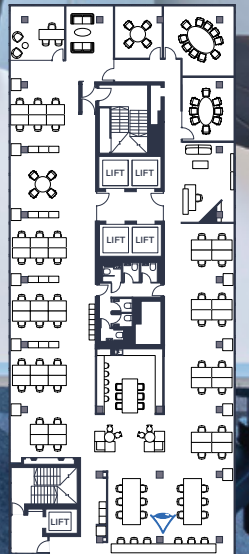
We provide

- Welcome space
- Meeting rooms
- Fully fitted and operational kitchen/breakout area
- Fully furnished with desks and chairs
- Soft furniture
- Storage
- 1 GB fibre-enabled building, flood wired with CAT 5 cabling
- BT and Colt Fibre

You bring with you

- Computers (including screen brackets)
- Telephones
- Electronics (TV/AV/photocopier/printer etc.)
- Wi-Fi

Your own desk space and kitchen - L17



Part L18 space plan

3,810 sq ft/ 354 sq m

Basinghall Street



- Desks and chairs for 45 people (34 fixed desks)
- 2 meeting rooms (8/10 people)
- Kitchen area/breakout
- Dedicated welcome space

We provide

- Welcome space
- Meeting rooms
- Fully fitted and operational kitchen/breakout area
- Fully furnished with desks and chairs
- Soft furniture
- Storage
- 1 GB fibre-enabled building, flood wired with CAT 5 cabling
- BT and Colt Fibre

You bring with you

- Computers (including screen brackets)
- Telephones
- Electronics (TV/AV/photocopier/printer etc.)
- Wi-Fi









The building



The Hub

A newly renovated co-working and breakout space on the mezzanine level. A place to collaborate, meet and enjoy.



Smart workplace app

App and Lifestyle Concierge providing access to service and amenity.



Views

Set apart from the City cluster, you'll have unique views across London.



Warm welcome

Newly renovated welcome area, with an impressive 5-metre high ceiling, and our friendly concierge.



Your own garden

A thoughtfully designed garden to escape the bustle of the office.



Easily connected

Serviced by 5 underground stations within 10 minutes' walk and the Elizabeth line 3 minutes' from your door*.



Perfectly located

A vibrant area populated with a wide variety of great restaurants and coffee shops.



Arrive by bicycle

9 showers, 96 lockers, 77 cycle spaces.



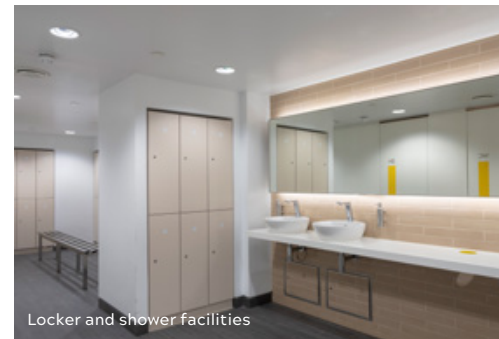
City Tower



A warm welcome



Bike storage



Locker and shower facilities



Spa-like facilities



Unique views across London



Your own garden

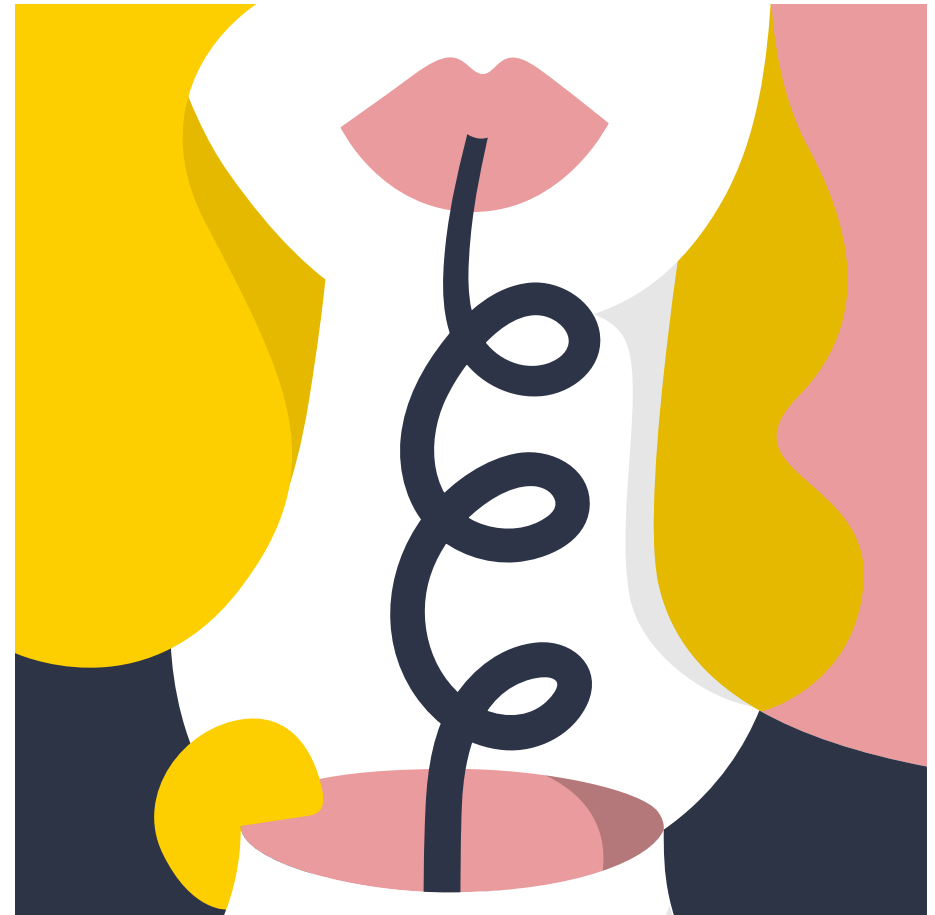


Reception

Welcome to The Hub

A newly renovated co-working space on the mezzanine level with soft seating breakout areas. A space to collaborate, meet or enjoy.

With cosy corners for relaxation or concentrated work and larger zones for socialising and collaboration, The Hub is well-equipped for all of your needs.



The smartest buildings in London

sesame, our smart workplace app provides access to service and amenity, contactless access control and lifestyle concierge service.

Open sesame



CONTACTLESS ACCESS CONTROL



LIFESTYLE CONCIERGE SERVICE



OFFERS



EVENTS



150+ FREE PUBLICATIONS



TRANSPORT



WEATHER



LOCAL AMENITIES



SUPPORT



OCCUPIER DIRECTORY



COMMUNITY



Make more of every day with sesame, our smart workplace app.

Effortlessly secure

There's no security pass, no sign in; just a mobile phone in your pocket / bag. The building app is a single point of access for you and your guests.

Effortlessly involved

Bringing the rich offering of the local area into the palm of your hand, the app will help you discover local offers, events and new openings and connect you with others in the building via the app's community platform.

Enjoy the easy life

Access to a Lifestyle Service. It's available 24/7. Think dry cleaning, catering, dinner reservations, business travel... The app has you covered.



The Barbican



Vibrant neighbourhood



KOBOX



Madison



Bow Lane



Davy's



One New Change



The Ned

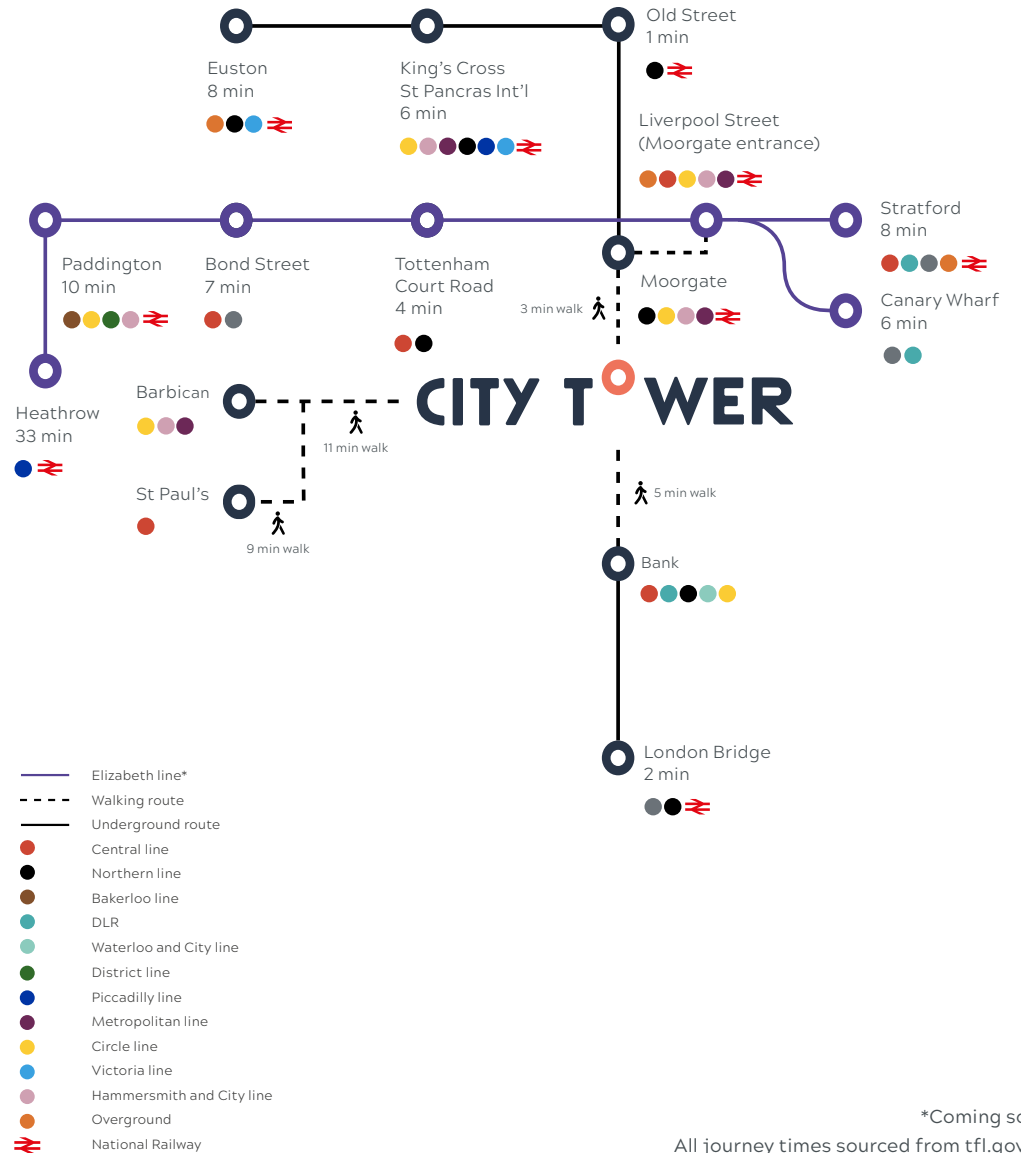


Street Pizza

London at your fingertips

There are already 5 underground stations within 10 minutes' walk of City Tower. Plus, the arrival of the Elizabeth line* will halve journey times across London. Quickly accessible from the building, the new Moorgate entrance to Liverpool Street station is situated just three minutes' walk from our front door.

Better connected



*Coming soon
All journey times sourced from tfl.gov.uk

Get in touch



Jeremy Attfield
020 7399 5675
Jeremy.Attfield@eu.jll.com

Katie Sommer
020 7399 5125
katie.sommer@eu.jll.com



James Campbell
020 3296 2074
james.campbell@cushwake.com

Tom Fayers
020 3296 4226
tom.fayers@cushwake.com

George Homer
020 3296 3160
George.Homer@cushwake.com



Rob Russell-Smith
020 7647 3000
rob.russell-smith@gpe.co.uk

citytowerlondon.com

Misrepresentation act: IMPORTANT. These particulars do not form part of any contract. Cushman & Wakefield, JLL, nor any of their directors, employees or agents are authorised to give or make any warranty or representation on behalf of any party. Whilst information and particulars are given in good faith, intending purchasers or tenants must satisfy themselves independently as to the accuracy of all matters on which they intend to rely. All negotiations are subject to contract. July 2021.

