

Up to 3,200 sq ft

Prominent Retail & Leisure Opportunity



CITY TOWER

MANCHESTER



★ PRET A MANGER ★



PHILPOTTS
FAMOUS FOR FOOD

M&S

TESCO
express

FRESHLY
CHOPPED
THE HEALTHY FOOD COMPANY



Retail at City Tower

City Tower is a landmark Manchester office building which has benefitted from substantial investment in recent years.

The available premises occupies a prominent position below City Tower fronting Parker Street and Piccadilly Gardens where occupiers include M&S, Lidl, Primark, Pizza Express, Starbucks, and Franco Manca.

Piccadilly Gardens



One of Manchester's main public squares



A central transport hub



Annual passing footfall in excess of 22 million



The area benefits from a diverse offering of retail, leisure and business



Proposed plans for improvements to the public realm





Retail CITY TOWER, MANCHESTER

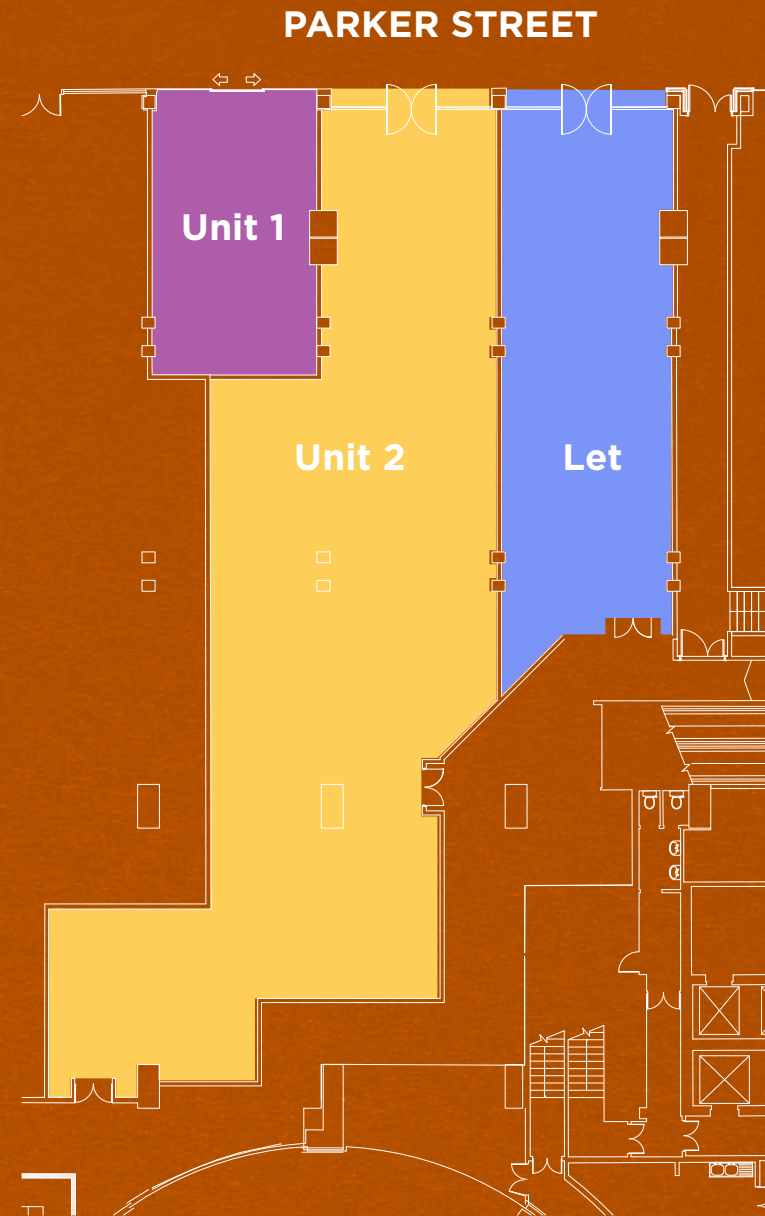


The space

Unit 1
603 sq ft | 56 sq m

Unit 2
3,208 sq ft | 298 sq m

Unit 3
Let



Enquiries

Contact the leasing team to discuss specific requirements and for lease and rental terms.



Stephen Henderson

shenderson@savills.com
0113 220 1206
07870 999 618



David Fox

david.fox@colliers.com
020 7344 6834
07711 647 126

All agents and for the vendors or lessors of this property whose agents they are, give notice that (i) these particulars are produced in good faith, are set out as a general guide only and do not constitute any part of an offer or contract. They are believed to be correct but any intending purchasers or tenants should not rely on them as statements or representations of fact but must satisfy themselves as to the correctness of each of them. (ii) no person in the employment of all agents has any authority to make or give any representation or warranty in relation to this property. October 2021.

Siren | +44 (0)20 7478 8300 | sirendesign.co.uk | S012778

