

351 Oxford Street, London, W1

Bright Self-Contained office space To Let

Location

This 1930's building occupies an end-terrace position on Oxford Street, at its junction with Woodstock Street within the Mayfair district of London city centre. The property is located in the heart of the significant retail offering of Oxford Street and closely situated to New Bond Street – this location provides excellent restaurant, café and retail amenities, for any office occupier.

Transport

The offices have excellent transport links being situated within close proximity of Bond Street (Jubilee and Central Lines) and Oxford Circus (Victoria, Central and Bakerloo Lines) Underground Stations. Numerous bus routes also pass by the building.

Description

This self-contained office building provides a series of office units across basement, ground and five upper floors. The 5th floor is accessed via lift or staircase from a dedicated entrance at street level. The available office space is part fitted.

Specification

- Excellent levels of light from 3 elevations
- Plasterboard ceiling
- Passenger lift
- Suspended luminaire strip-lighting
- Remote controlled wall mounted air-conditioning units
- Secondary glazing
- Perimeter trunking
- Carpet floor covering
- Voice entry phone
- 1 x fitted board room
- Fitted kitchenette

Floor Areas

Floor	Sq ft	Sq m
5 th	1,196	111
Total	1,196	111

March 2019



Lease Terms

New Lease available direct from the landlord, for a term to be agreed.

Use

The building benefits from B1 – offices use class.

Quoting Rent:

£57.50 per sq ft

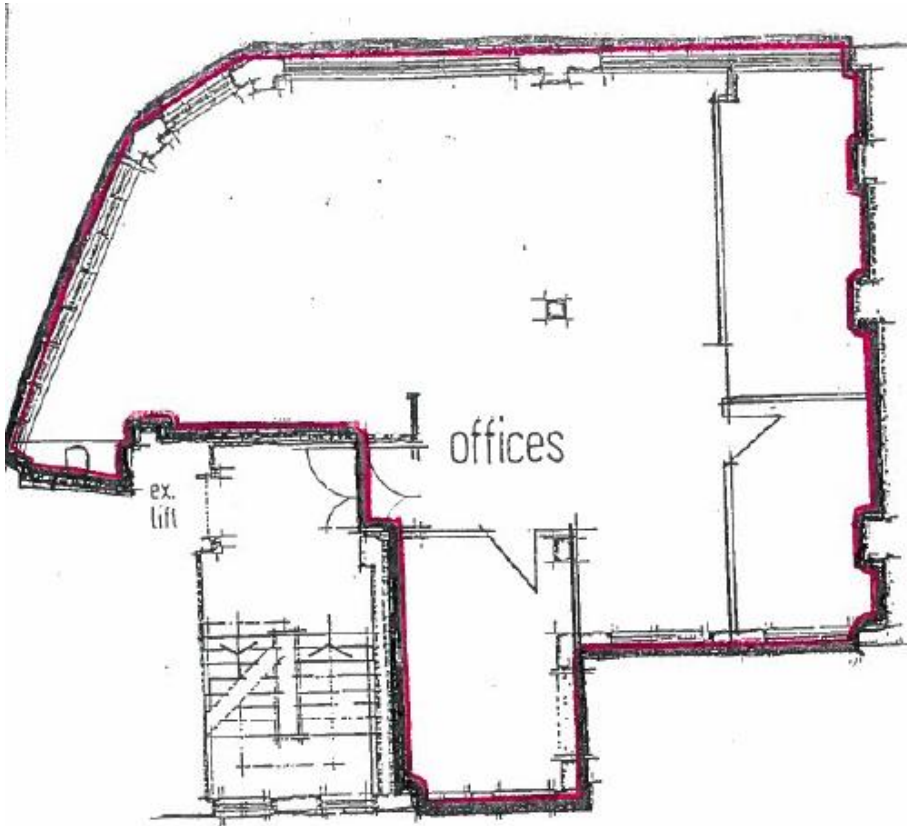
Rates

£14.75 per sq ft

Service Charge

c.£TBC per sq ft

Floorplan:



For further information or to arrange an inspection:

Contact:

Samantha Jones
020 7747 0140
Samantha.Jones@levyllp.co.uk

Oliver Pardoe
020 7747 0161
Oliver.pardoe@levyllp.co.uk