



**COLDWELL
BANKER
COMMERCIAL**

SUN COAST PARTNERS

LANDMARK INDUSTRIAL PARK

\$12.00 SF/yr (MG)

305 Raleigh Street, Unit B
Wilmington, NC 28412

AVAILABLE SPACE
1,250 SF

AREA
Located in the Landmark Industrial Park off of Carolina Beach Road.

FOR LEASE

CBCWORLDWIDE.COM



CONTACT INFO

Tyler Pegg
910.512.3550
tyler.pegg@cbcsuncoast.com

Cody Cress
910.409.8421
cody.cress@cbcsuncoast.com

©2019 Coldwell Banker Real Estate LLC, dba Coldwell Banker Commercial Sun Coast Partners. All rights reserved. Coldwell Banker Commercial® and the Coldwell Banker Commercial are registered service marks owned by Coldwell Banker Real Estate LLC. Coldwell Banker Real Estate LLC, dba Coldwell Banker Commercial Affiliates fully supports the principles of the Fair Housing Act and the Equal Opportunity Act. Each office is independently owned and operated. The information provided is deemed reliable, but it is not guaranteed to be accurate or complete, and it should not be relied upon as such. This information should be independently verified before any person enters into a transaction based upon it.

COLDWELL BANKER COMMERCIAL
SUN COAST PARTNERS
1430 Commonwealth Drive, Suite 102, Wilmington, North Carolina 28403
910.350.1200



LANDMARK INDUSTRIAL PARK

305 Raleigh Street, Unit B, Wilmington, NC 28412



OFFERING SUMMARY

Available SF:	1,250 SF
Lease Rate:	\$12.00 SF/yr (MG)
Lot Size:	1.18 Acres
Building Size:	10,000 SF
Zoning:	IND - Heavy Industrial District

PROPERTY OVERVIEW

1,250 SF Flex Space available for lease at 305 Raleigh Street. This suite offers 500 SF of office/showroom and 750 SF of warehouse. There is one roll up door on the rear of the unit that is suitable for box trucks, vans and picks ups.

DEMOGRAPHICS

	1 MILE	3 MILES	5 MILES
Total Households	1,861	17,271	44,886
Total Population	4,742	38,227	102,982
Average HH Income	\$46,128	\$54,363	\$58,001

CBCWORLDWIDE.COM

Tyler Pegg
 910.512.3550
 tyler.pegg@cbcsuncoast.com

Cody Cress
 910.409.8421
 cody.cress@cbcsuncoast.com





LANDMARK INDUSTRIAL PARK

305 Raleigh Street, Unit B, Wilmington, NC 28412

LEASE



CBCWORLDWIDE.COM

Tyler Pegg
910.512.3550
tyler.pegg@cbcsuncoast.com

Cody Cress
910.409.8421
cody.cress@cbcsuncoast.com



SUN COAST PARTNERS



LANDMARK INDUSTRIAL PARK

305 Raleigh Street, Unit B, Wilmington, NC 28412

LEASE



CBCWORLDWIDE.COM

Tyler Pegg
910.512.3550
tyler.pegg@cbcsuncoast.com

Cody Cress
910.409.8421
cody.cress@cbcsuncoast.com



**COLDWELL
BANKER
COMMERCIAL**

SUN COAST PARTNERS



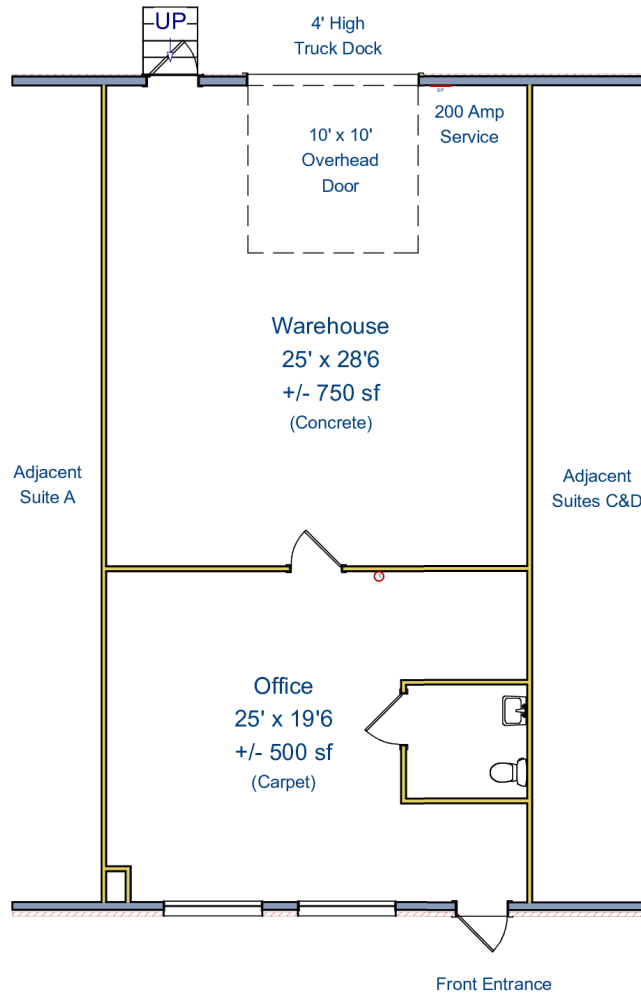
LANDMARK INDUSTRIAL PARK

305 Raleigh Street, Unit B, Wilmington, NC 28412

LEASE

305B Raleigh Street

1,250 sf



1/8" = 1'

This floor plan is for illustrative purposes only.
All dimensions are approximate and should be field verified.

CBCWORLDWIDE.COM

Tyler Pegg
910.512.3550
tyler.pegg@cbcsuncoast.com

Cody Cress
910.409.8421
cody.cress@cbcsuncoast.com



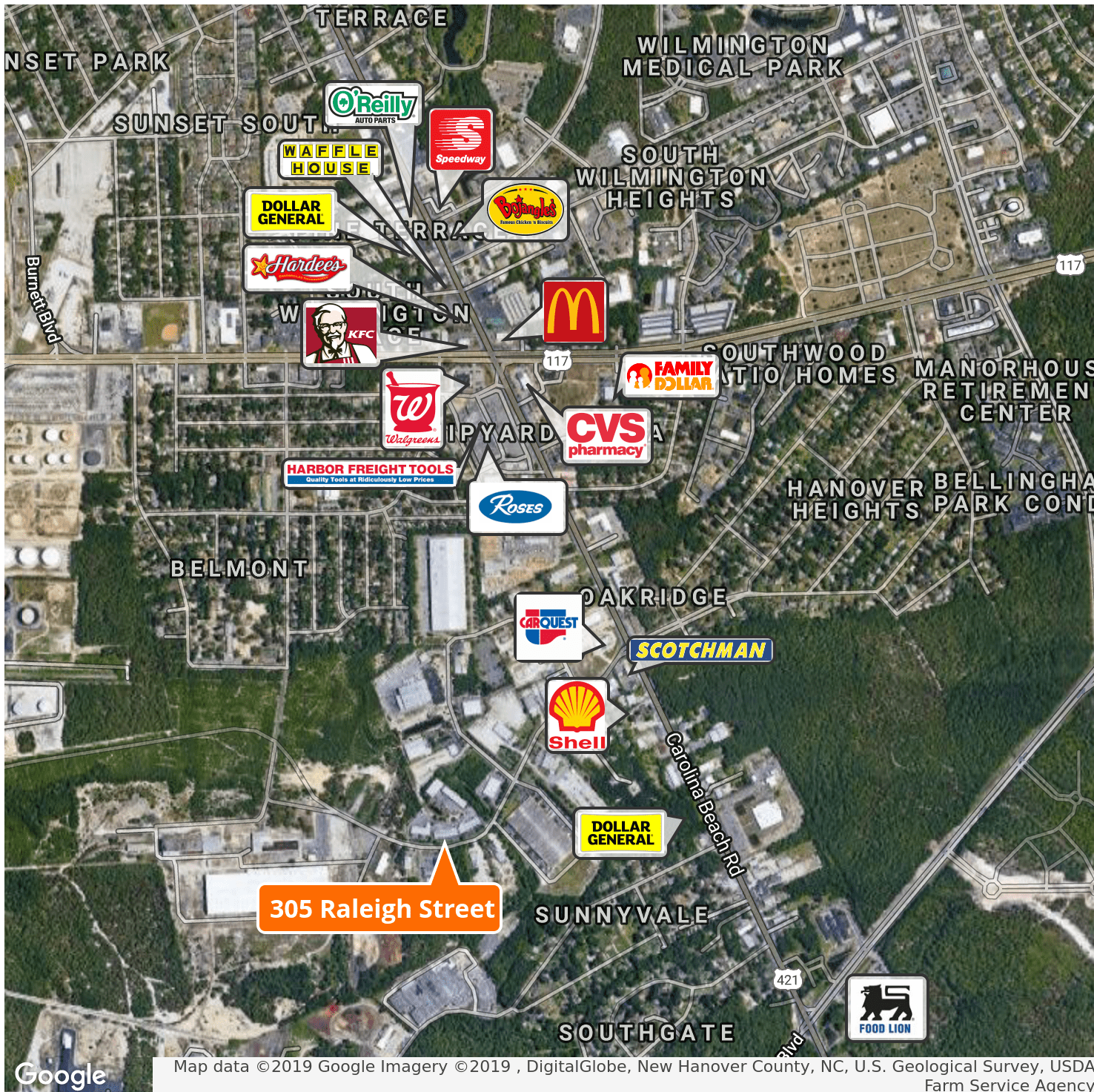
SUN COAST PARTNERS



LANDMARK INDUSTRIAL PARK

305 Raleigh Street, Unit B, Wilmington, NC 28412

LEASE



CBCWORLDWIDE.COM

Tyler Pegg
 910.512.3550
 tyler.pegg@cbcsuncoast.com

Cody Cress
 910.409.8421
 cody.cress@cbcsuncoast.com



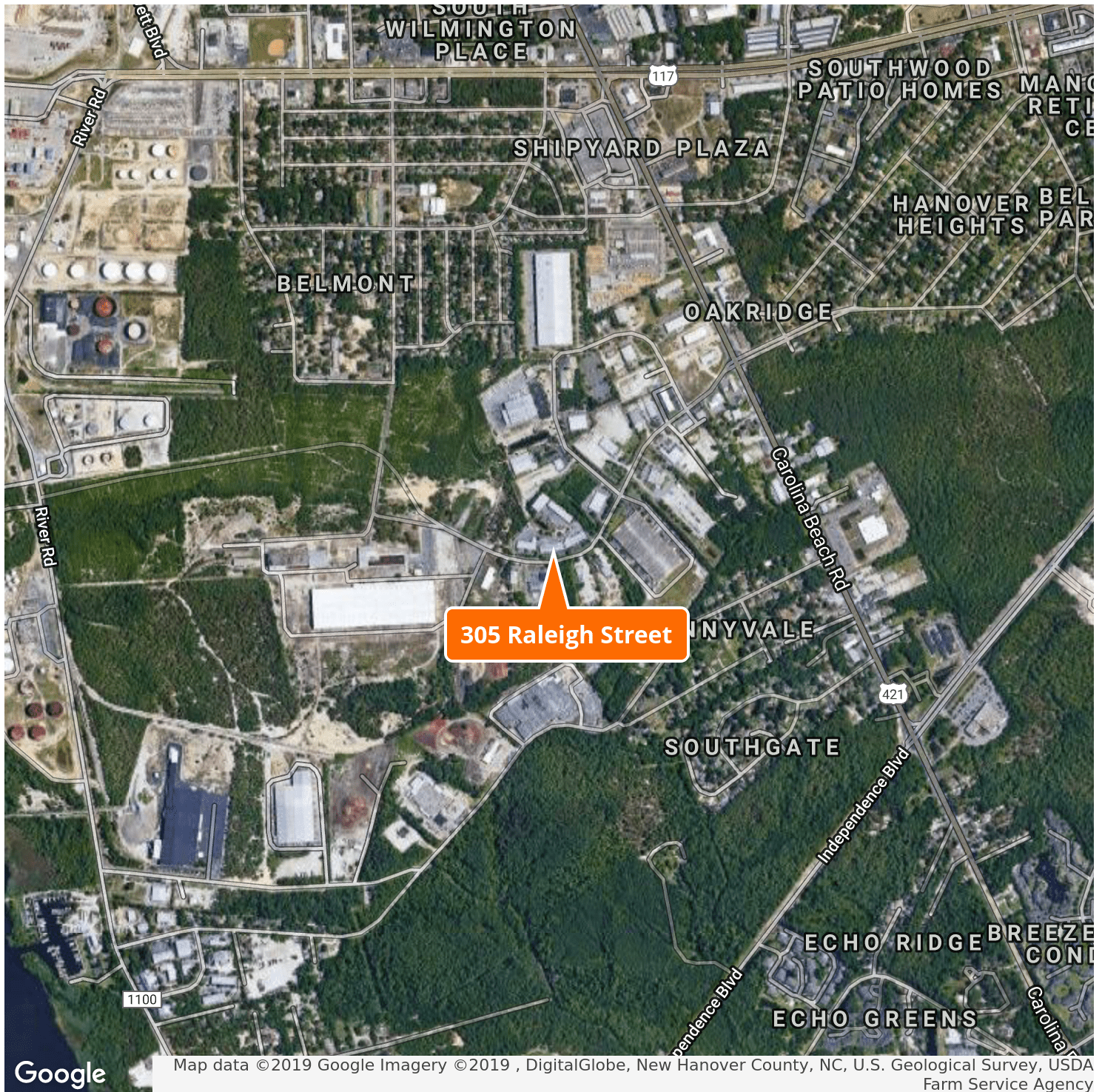
**COLDWELL
 BANKER
 COMMERCIAL**

SUN COAST PARTNERS



LANDMARK INDUSTRIAL PARK

305 Raleigh Street, Unit B, Wilmington, NC 28412



CBCWORLDWIDE.COM

Tyler Pegg
 910.512.3550
 tyler.pegg@cbcsuncoast.com

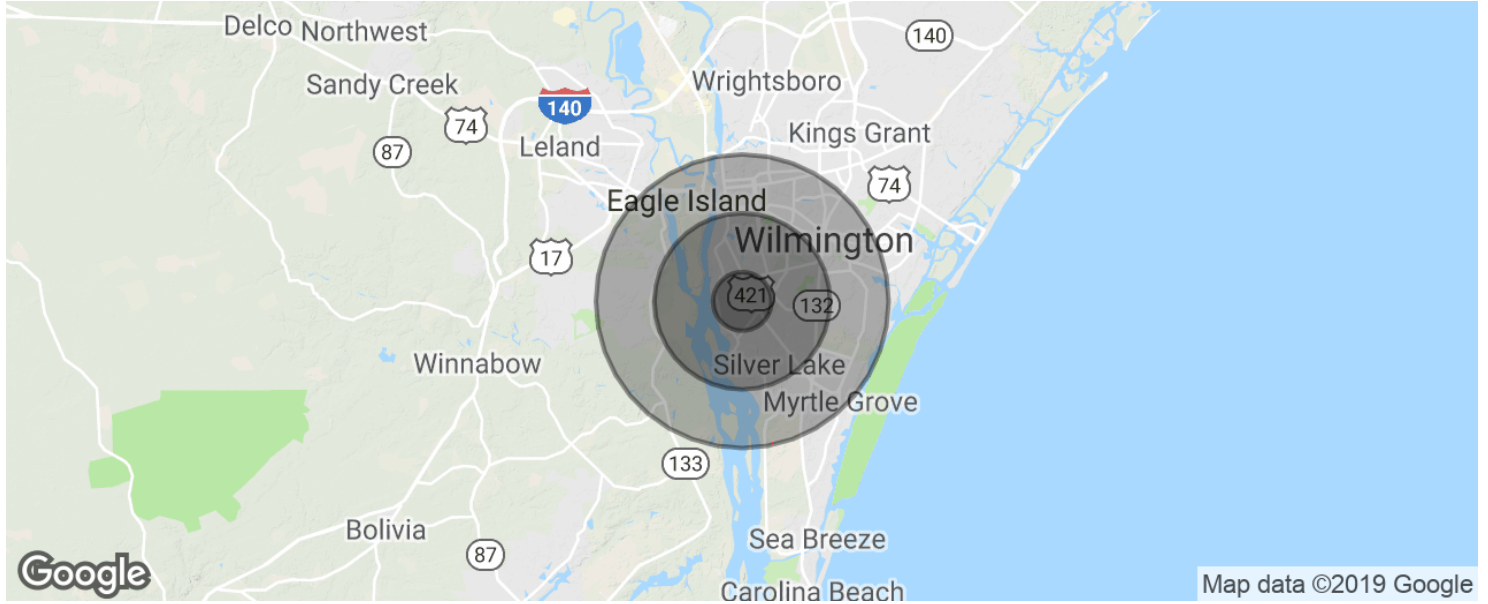
Cody Cress
 910.409.8421
 cody.cress@cbcsuncoast.com





LANDMARK INDUSTRIAL PARK

305 Raleigh Street, Unit B, Wilmington, NC 28412



POPULATION	1 MILE	3 MILES	5 MILES
Total population	4,742	38,227	102,982
Median age	35.7	38.3	36.9
Median age (Male)	35.6	36.9	35.8
Median age (Female)	36.0	39.7	37.9
HOUSEHOLDS & INCOME	1 MILE	3 MILES	5 MILES
Total households	1,861	17,271	44,886
# of persons per HH	2.5	2.2	2.3
Average HH income	\$46,128	\$54,363	\$58,001
Average house value	\$159,157	\$196,619	\$225,472

* Demographic data derived from 2010 US Census

CBCWORLDWIDE.COM

Tyler Pegg
 910.512.3550
 tyler.pegg@cbcsuncoast.com

Cody Cress
 910.409.8421
 cody.cress@cbcsuncoast.com





LANDMARK INDUSTRIAL PARK

305 Raleigh Street, Unit B, Wilmington, NC 28412

LEASE



TYLER PEGG

Commercial Broker

910.512.3550

tyler.pegg@cbcsuncoast.com

NC #249446



CODY CRESS

Commercial Broker

910.409.8421

cody.cress@cbcsuncoast.com

NC #252916

CBCWORLDWIDE.COM

Tyler Pegg
910.512.3550
tyler.pegg@cbcsuncoast.com

Cody Cress
910.409.8421
cody.cress@cbcsuncoast.com



**COLDWELL
BANKER
COMMERCIAL**

SUN COAST PARTNERS