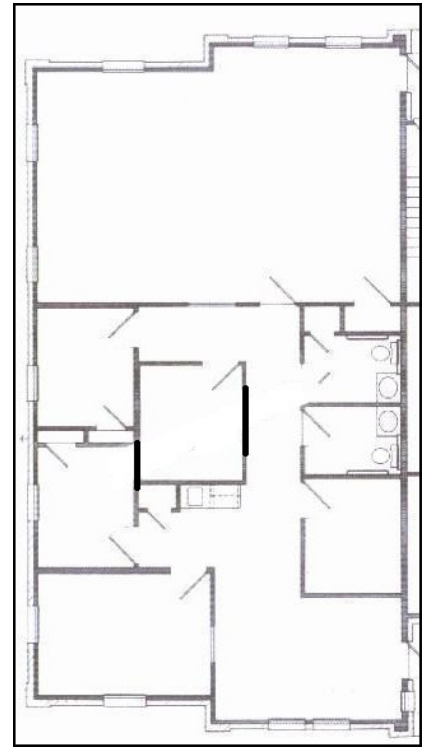


512.312.1150
startexcommercial.com



251 N. FM 1626 #2A
Buda, Texas 78610



181 Cimarron Park Loop Ste A, Buda, Texas
1,752 sf 2nd Generation Medical or Office
\$1.70 per sf—some utilities included

- Professional Office located in Busy Cimarron Professional Park
- Located on FM 967 between Downtown Buda/IH 35 and FM 1626
- Office includes lobby, 5 offices/exam rooms, 2 ADA compliant restroom and a large open area in the back of the suite. Front and back entrance.
 - Available immediately, only vacant office in the complex

Chris Dunkin, Broker
512-312-1150

Jessica Shelton, Agent
512-771-0513

STARTEXCOMMERCIAL.COM

