

MODERN OFFICE SPACE FOR LEASE IN A PROFESSIONAL BUILDING

GEORGETOWNE / MILL BASIN, BROOKLYN, NY 11234

Location

2350 RALPH AVENUE

(between Avenue N & East 64th St)
Brooklyn, NY 11234

Description

**Modern Office Space with Parking
for Immediate Lease in a
Professional Building.**

Ideal for many office uses.

Space

1,500 SF ~ Second Floor

*The Space is
Configured Into:*

- Waiting Room
- Reception Area
- Manager's Office
- Conference Room
- Three Private Offices
- Kitchenette / Break Room
- Two Restrooms
- Storage closets

Features

- * Modern Finish
- * On-Site Parking
- * Fully Alarmed
- * Great Natural Light
- * Wired for Voice & Data
- * Excellent Visibility & Presence
- * Close to Shopping, Banking
and Restaurants



Transportation

Buses: **B47, B100, B41 & B3**
Easy Access to the **Belt Parkway**

Rent

Available Upon Request



View the Video at ::
[Youtube.com/TvBRealty](https://www.youtube.com/TvBRealty)

Tony vanderBeek

718.887.6200

Commercial Realtor®

RETAIL & OFFICE LEASING and INVESTMENT PROPERTY SALES

tony@tvbrealty.com

www.TvBRealty.com



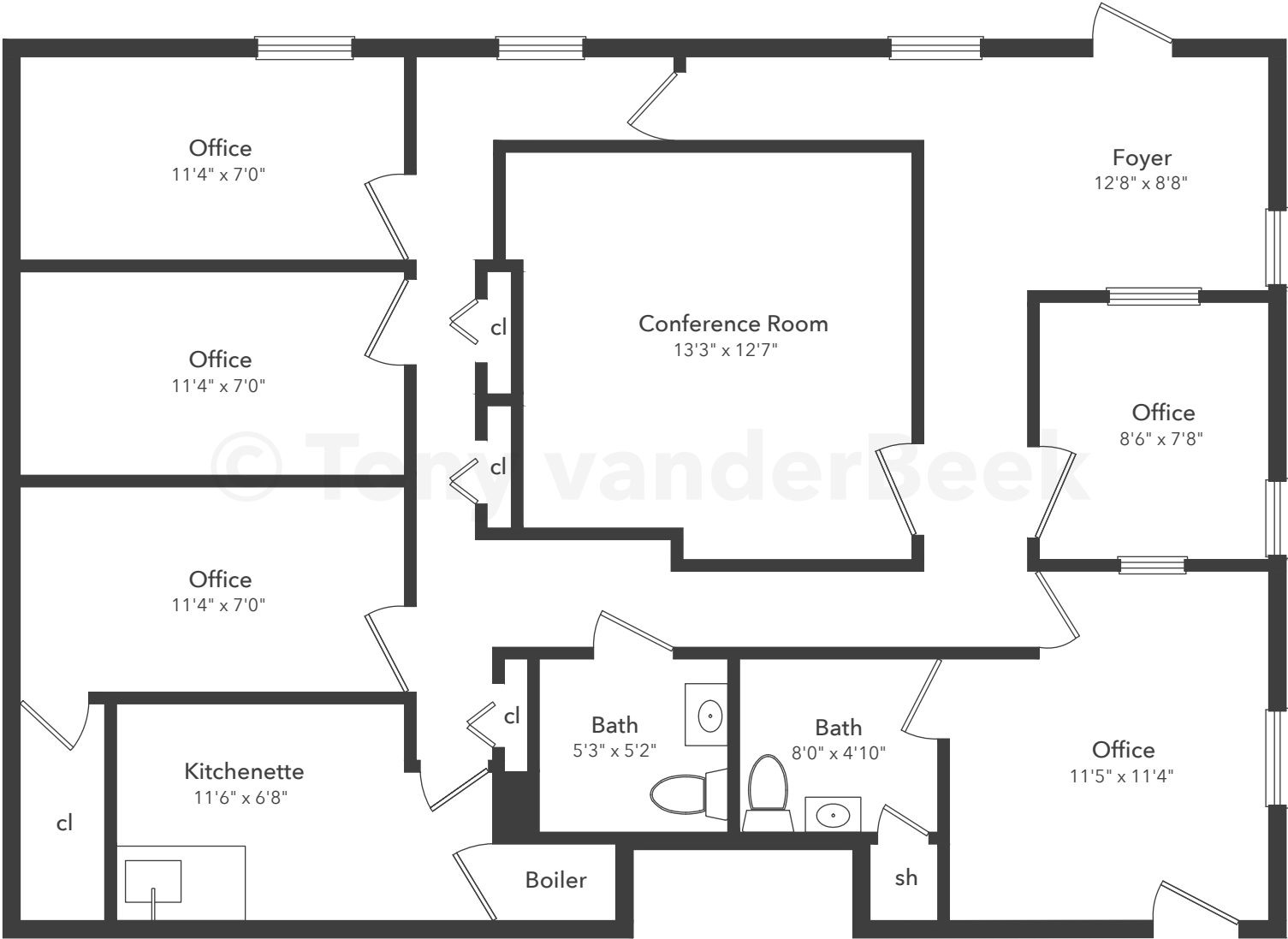
All of the information furnished has been provided to us by sources which we deem to be reliable. However, no warranty or representation is made as to the accuracy thereof. This information is submitted subject to error, omissions, change of price or rental, change of other terms and conditions, suitable references, prior sale, lease or financing, or withdrawal without notice.





2350 Ralph Avenue

Commercial Space



Ceiling Height 8'0"

Floor Plan measurements and square footages are approximate and are for illustrative purposes only. There is no guarantee, warranty or representation as to the accuracy and completeness of the floor plan.