



AMAZING VIEWS FOR AMAZING COMPANIES

Levels 34 to 36 floors provide 13,275 sq ft – 29,001 sq ft
of high quality fitted out space

CITY POINT
LONDON EC2

Workspace for extraordinary companies

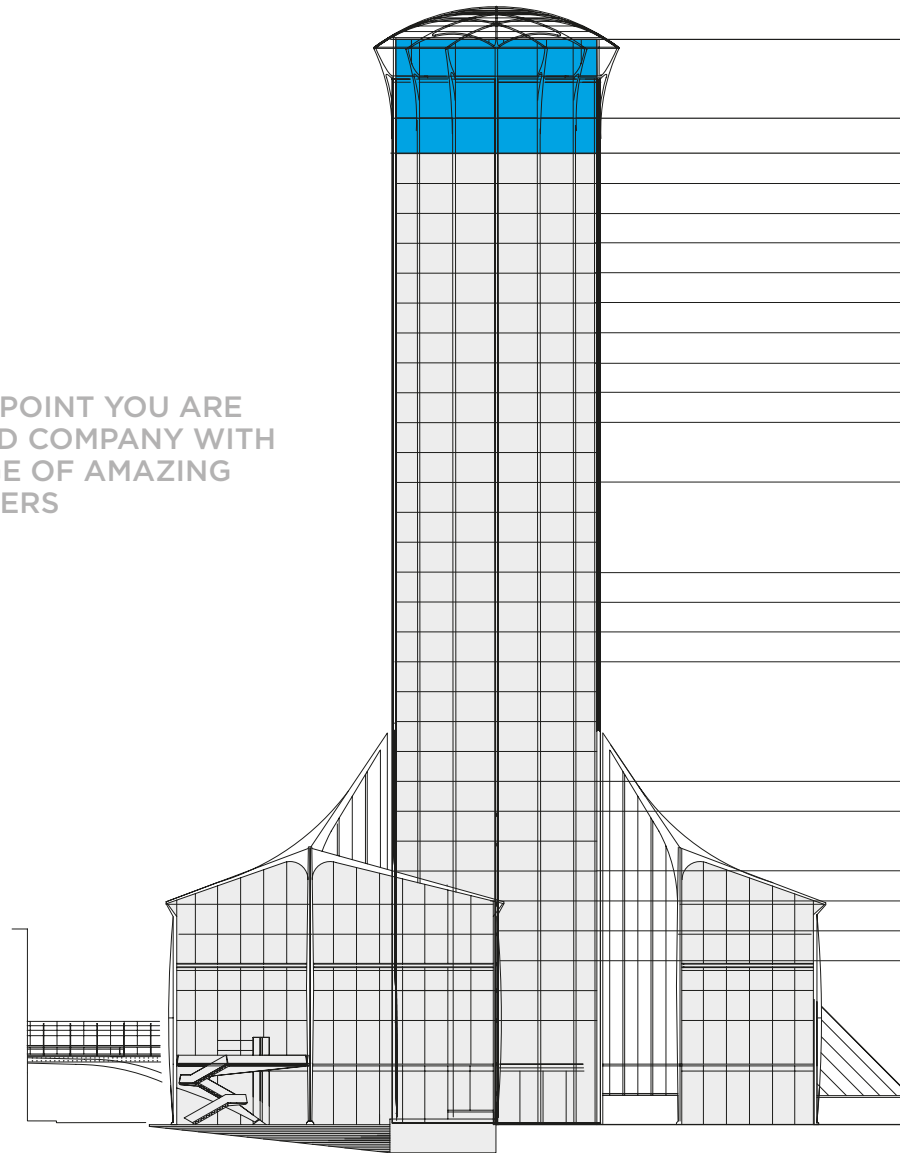






SCHEDULE OF AREAS

AT CITYPOINT YOU ARE
IN GOOD COMPANY WITH
A RANGE OF AMAZING
OCCUPIERS

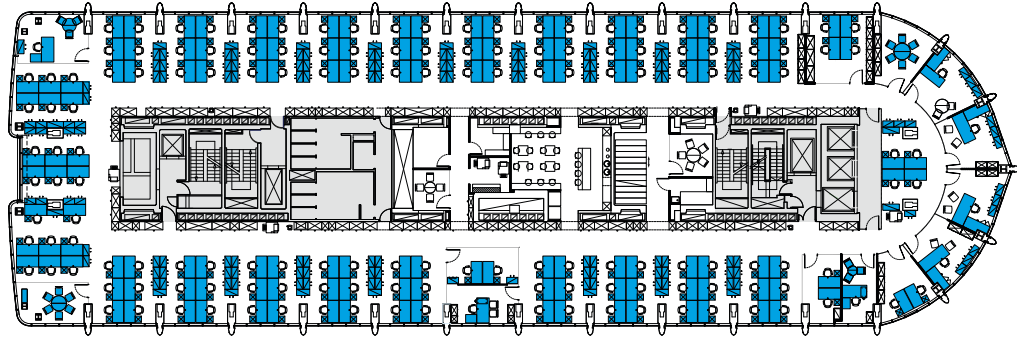


LEVEL	TENANT	SQ FT	SQ M
35 - 36	AVAILABLE	15,726	1,461
34	AVAILABLE	13,275	1,233
33	Under offer		
32	Pending	12,906	1,199
31	Seyfarth Shaw LLP		
30	Winston & Strawn / Available	6,566	610
29	Winston & Strawn		
28	United Trust Bank		
27	Willkie Farr & Gallagher LLP		
26	Janus Capital International Ltd		
25	Willkie Farr & Gallagher LLP		
23 - 24	Cravath Swaine & Moore LLP		
19 - 22	Simpson Thacher & Bartlett LLP		
18	Pending	12,277	1,141
17	Pending	11,891	1,105
16	Pending	12,315	1,144
12 - 15	Regus		
11	Pending	15,999	1,486
9 - 10	Regus		
8	Ebiquity PLC		
7	Morrison & Foerster LLP		
6	Mimecast		
0 - 5	Simmons & Simmons		

FLOORPLANS

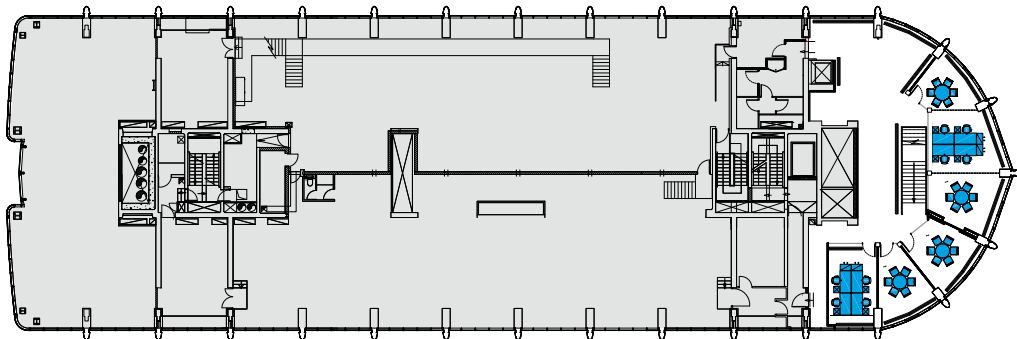
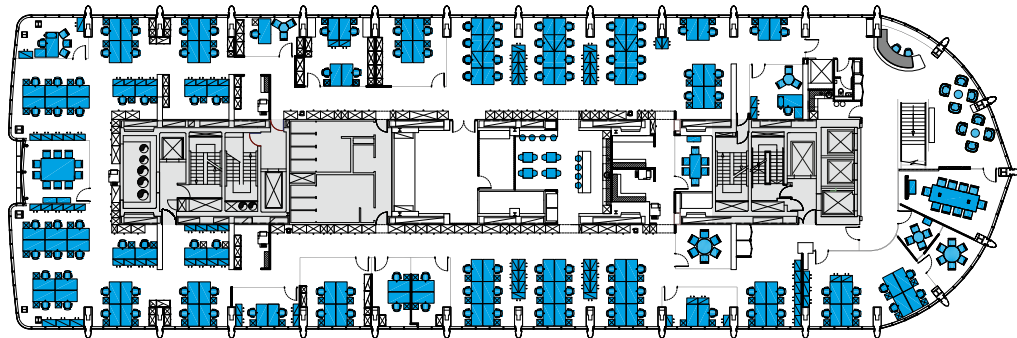
LEVEL 34

13,275 SQ FT /
1,233 SQ M



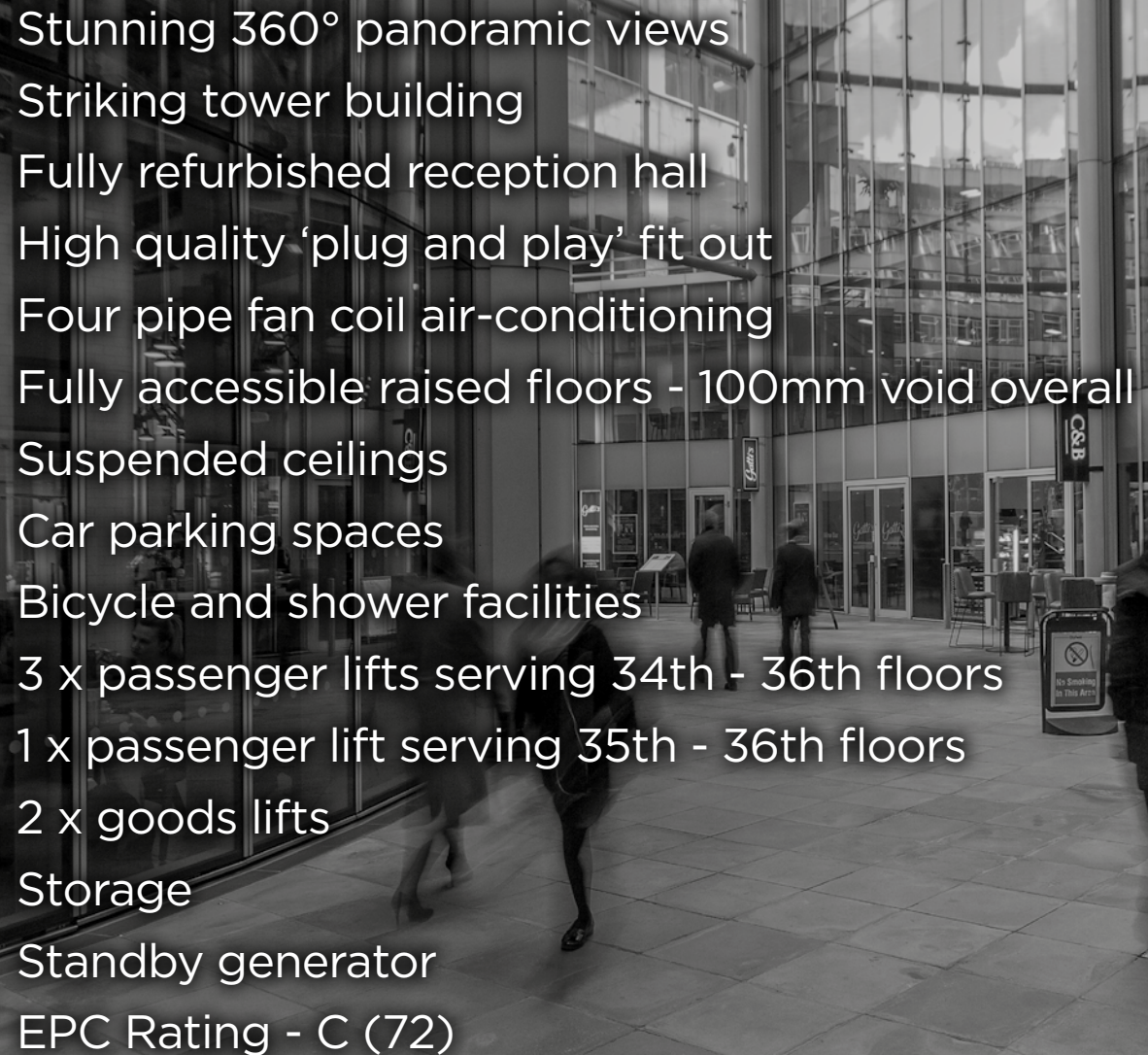
LEVELS 35 & 36

15,726 SQ FT /
1,461 SQ M



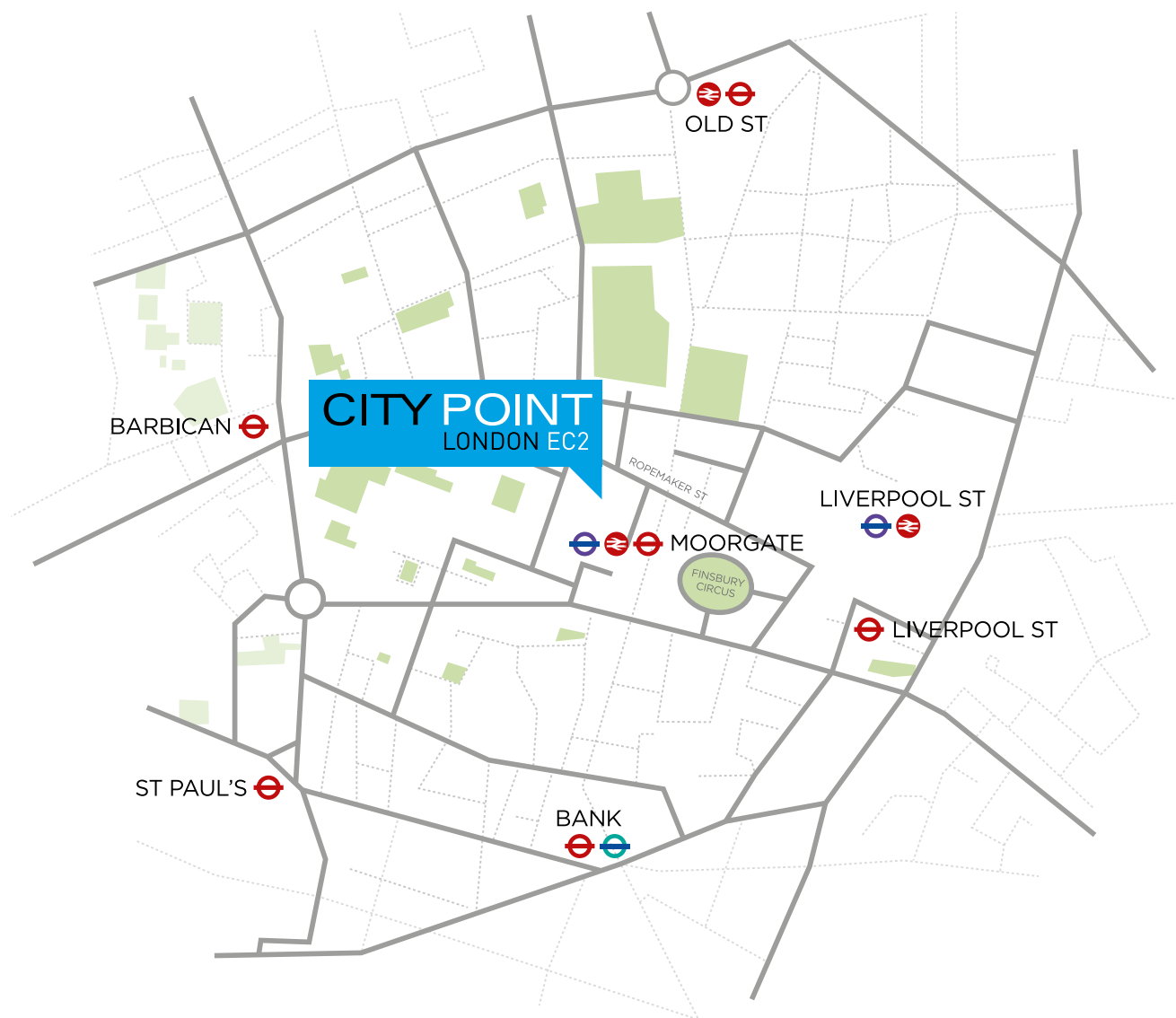
SPECIFICATIONS

**HIGH QUALITY
FITTED OUT SPACE
WITH AMAZING VIEWS**



- Stunning 360° panoramic views
- Striking tower building
- Fully refurbished reception hall
- High quality 'plug and play' fit out
- Four pipe fan coil air-conditioning
- Fully accessible raised floors - 100mm void overall
- Suspended ceilings
- Car parking spaces
- Bicycle and shower facilities
- 3 x passenger lifts serving 34th - 36th floors
- 1 x passenger lift serving 35th - 36th floors
- 2 x goods lifts
- Storage
- Standby generator
- EPC Rating - C (72)

CONNECTIONS



CITYPOINT IS CENTRALLY
LOCATED, A STONE'S
THROW FROM A NUMBER
OF TRANSPORT HUBS

MOORGATE

2 Min walk

Circle, Hammersmith & City,
Metropolitan, Northern lines
and National Rail



Elizabeth Line opening 2018

LIVERPOOL ST

6 Min walk

West Anglia Main Line,
Great Eastern Main Line, Stansted Express.
Central, Circle, Hammersmith &
City and Metropolitan lines.



Elizabeth Line opening 2018

BANK

7 Min walk

Docklands Light Railway, Central,
Northern, Waterloo & City lines.



ST PAUL'S

12 Min walk

Central line.



BARBICAN

6 Min walk

Circle, Hammersmith & City and
Metropolitan lines.



OLD ST

7 Min walk

Northern line & National Rail.





CONTACT

CBRE

JLL

David Perowne
+44 (0)20 7182 3235
david.perowne@cbre.com

Matthew Mycock
+44 (0)20 7399 5862
matthew.mycock@eu.jll.com

Natalie Lelliott
+44 (0)20 7182 2507
natalie.elliott@cbre.com

Richard Carson
+44 (0)20 7852 4025
richard.carson@eu.jll.com

Lee Berry
+44 (0)20 7182 3198
lee.berry@cbre.com

Katie O'Reilly
+44 (0)20 7399 5125
katie.oreilly@eu.jll.com

citypoint.org.uk

These particulars are believed to be correct at the date of publication but their accuracy is in no way guaranteed, neither do they form part of any contract. All areas are approximate. Distributed March 2016.