

Eli Moore / Kraig  
Moore  
Agent/Broker



79.4 Acres



## National Land Realty Bowling Green Office

2724 Halifax Bailey Road  
Scottsville, Kentucky 42164

# Property Overview

79.4 Acres, 1 Boundary



# Property Overview

Barren County, KY

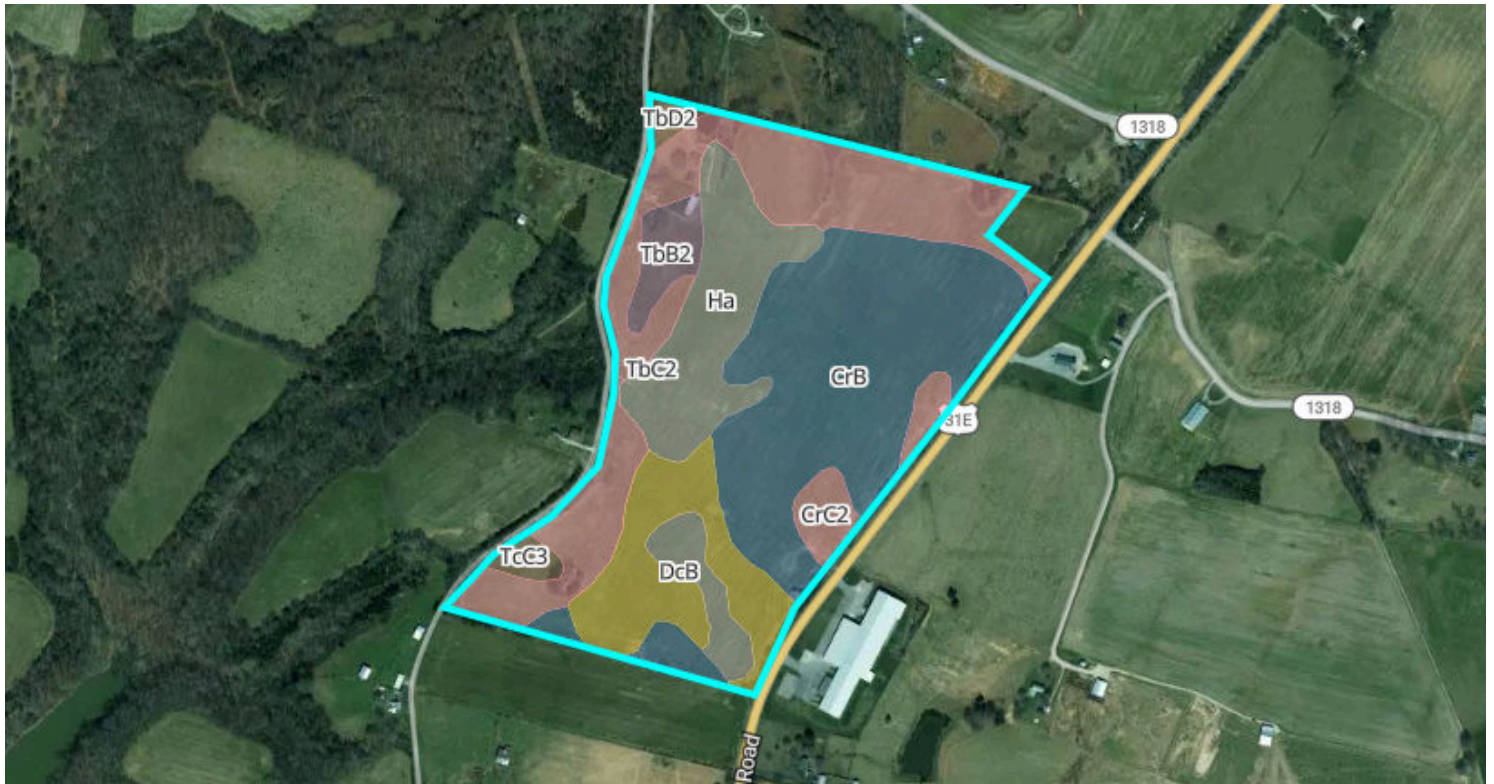
79.4 Acres, Boundary 1 of 1



Barren County, KY  
Township: -

Locations  
-

Acres  
79.40



**78.9** / 100 NCCPI

|   | Code | Soil Description  | % of Selection | Acres | Non-IRR Class | IRR Class | NCCPI |
|---|------|---|----------------|-------|---------------|-----------|-------|
| ● | CrB  | Crider silt loam, 2 to 6 percent slopes                           | 35.8%          | 28.4  | 2e            | --        | 91.2  |
| ● | TbC2 | Talbott cherty silty clay loam, 6 to 12 percent slopes, eroded... | 25.8%          | 20.5  | 4e            | --        | 66.2  |
| ● | Ha   | Hamblen silt loam   | 16.9%          | 13.4  | 2w            | --        | 86.7  |
| ● | DcB  | Dickson silt loam, 2 to 6 percent slopes                          | 12.3%          | 9.7   | 2e            | --        | 65.5  |
| ● | CrC2 | Crider silt loam, 6 to 12 percent slopes, eroded                  | 3.6%           | 2.8   | 3e            | --        | 84.7  |

# Soils

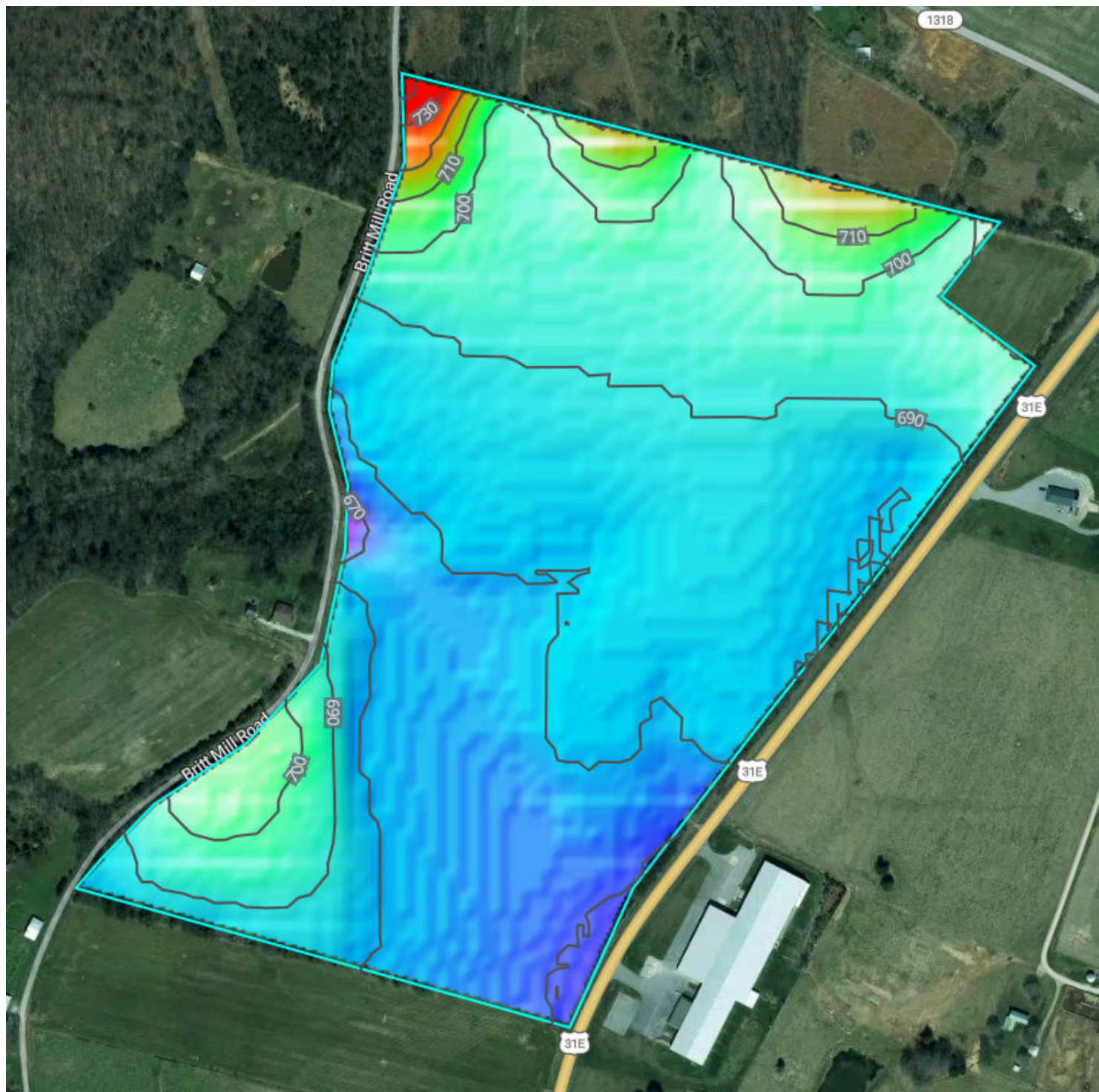


79.4 Acres, 1 Boundary

|   | Code | Soil Description  | % of Selection | Acres | Non-IRR Class | IRR Class | NCCPI |
|---|------|---|----------------|-------|---------------|-----------|-------|
| ● | TbB2 | Talbott cherty silty clay loam, 2 to 6 percent slopes, eroded...      | 3.2%           | 2.6   | 3e            | --        | 61.3  |
| ● | TcC3 | Talbott cherty silty clay, 6 to 12 percent slopes, severely eroded... | 1.3%           | 1     | 6e            | --        | 60.5  |
| ● | TbD2 | Talbott cherty silty clay loam, 12 to 20 percent slopes, eroded...    | 1.1%           | 0.9   | 6e            | --        | 61.4  |

# Elevation

79.4 Acres, 1 Boundary



660.8 feet

741.8 feet

Source: USGS 3 Meter Dem

Interval: 10 feet

Range: 81 feet

Min: 660.8 feet

Max: 741.8 feet

Slope: 3.1%

Min: 0%

Max: 20.4%



## Flood Zone Hazard

- 0.2% annual flood hazard
- 1% annual flood hazard
- Future 1% annual flood hazard
- Increased risk due to levee
- Reduced risk due to levee
- Regulatory Floodway
- Special Floodway
- Wetlands