

1 Marylebone High Street  
London W1U 4LZ  
T 020 7009 2300  
F 020 7009 2311  
office@edwardcharles.co.uk  
www.edwardcharles.co.uk

**EDWARD CHARLES  
& PARTNERS** W1  
CHARTERED SURVEYORS

## **14-15 CONDUIT STREET | MAYFAIR | W1**

Newly Refurbished Office to Let

841 Sq Ft - Available



---

### **Location**

The building is located on the north side of Conduit Street next to its junction with Mill Street. It is a short walk from several underground stations including Green Park (Jubilee, Piccadilly and Victoria Lines), Bond Street (Central and Jubilee Lines), Piccadilly Circus (Bakerloo and Piccadilly Lines) and Oxford Circus (Central and Bakerloo Lines).

---

## Accommodation & Outgoings

Floor	Area (sq ft)	Area (sq m)	Rent (psf)	Rates (est)	SC (psf)	Status
5 <sup>th</sup>	841	78	£89.50	£39.04 psf	£16.84	Available Immediately

## Amenities/Specification

- \* Newly refurbished
- \* Newly refurbished reception
- \* New air-conditioning
- \* Automatic passenger lift
- \* Commissionaire
- \* Full access raised floor
- \* Excellent natural light

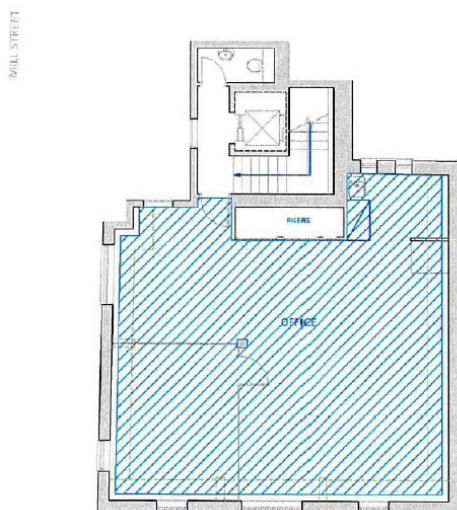
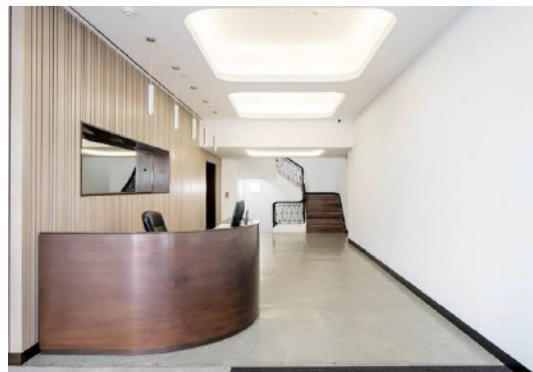
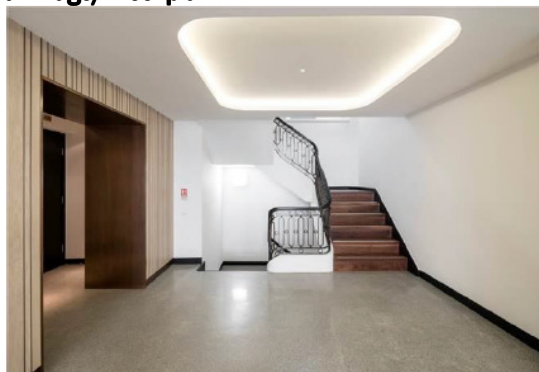
## Lease

New leases are available from the Landlord.

## EPC Rating

Available on request.

## Internal Image/ Floor plan



## Viewings

Strictly by appointment through joint letting agents:

### Edward Charles & Partners

**Ian Bradshaw:** 020 7009 2314 / 07468 525486

Email: [ibradshaw@edwardcharles.co.uk](mailto:ibradshaw@edwardcharles.co.uk)

**Sean Cunningham:** 020 7009 2310 / 07827 985858

Email: [scunningham@edwardcharles.co.uk](mailto:scunningham@edwardcharles.co.uk)

### BNP Paribas Real Estate

**Jordan Adair:** 020 7318 4684 / 07880 552710

Email: [Jordan.adair@realestate.bnpparibas](mailto:Jordan.adair@realestate.bnpparibas)

**Sarah Brisbane:** 020 7318 4621 / 07769 201458

Email: [sarah.brisbane@realestate.bnpparibas](mailto:sarah.brisbane@realestate.bnpparibas)