

AVAILABLE
IBM Building
 25 NW Riverside Drive
 EVANSVILLE, IN 47708



- Lease Price: \$17.99/SF/Gross
- Lease Term: 3 to 5 Years
- Building SF/Floor: 15,640 SF
- # of Stories: 3
- Zoning: C-3
- Multi-tenant: Yes
- Sprinkler: Yes

- Parking: \$50 per space
- Annual Taxes: Paid by Landlord
- Showing: Contact Listing Agent
- Location: SW Corner of Sycamore and NW Riverside Drive
- Loopnet #: 18237025
- ICREX #: 28609766

Downtown Class A office facility for lease.

Available Space

1st Floor 16,332 SF Available
 Common Area: 2,952 SF included in total
 Divisible to: 2,751 SF
 3,804 SF
 6,825 SF

2nd Floor 5,134 SF Available
 Divisible to: 1,776 SF
 3,358 SF

See floor plans on reverse side.

For More Information, Contact:

Aaron Kendall, CCIM

Direct: 812.480.8100

Fax: 812.473.6684

aaronkendall@fctuckercommercial.com



7820 Eagle Crest Blvd. Suite 200
 Evansville, IN • 47715
 812-473-6677 • Fax: 812-473-6684



FCTuckerCommercial.com

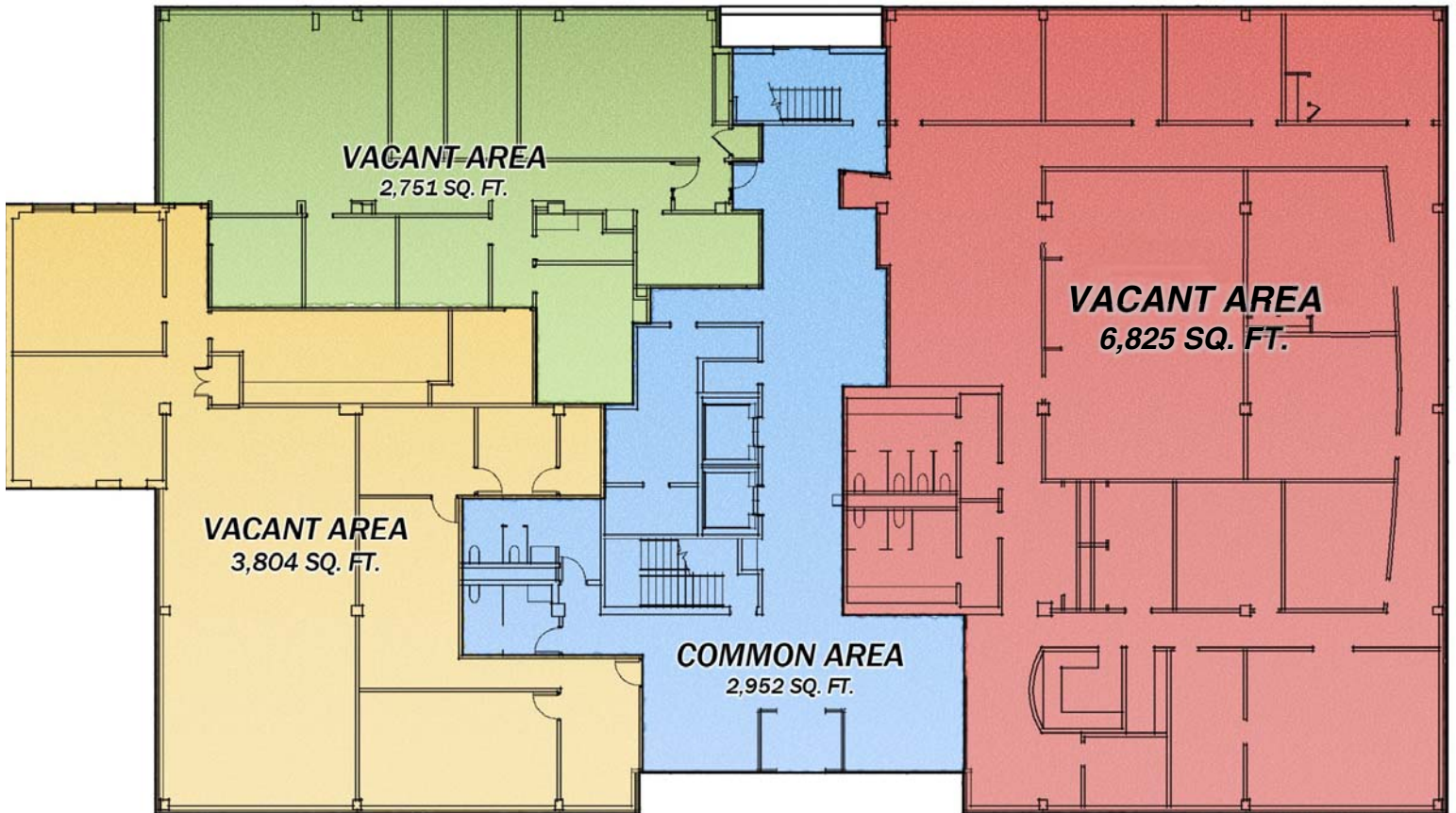


**F.C. Tucker
Commercial**

AVAILABLE

IBM Building

25 NW Riverside Drive
EVANSVILLE, IN 47708



IBM BUILDING

25 N.W. RIVERSIDE DR. EVANSVILLE, IN 47708 | FIRST FLOOR

For More Information, Contact:

Aaron Kendall, CCIM

Direct: 812.480.8100

Fax: 812.473.6684

aaronkendall@fctuckercommercial.com



7820 Eagle Crest Blvd. Suite 200
Evansville, IN • 47715
812-473-6677 • Fax: 812-473-6684



FCTuckerCommercial.com

The information contained herein was obtained from sources we consider reliable. We cannot be responsible, however, for errors, omissions, prior sale, and withdrawal from the market or change in price.

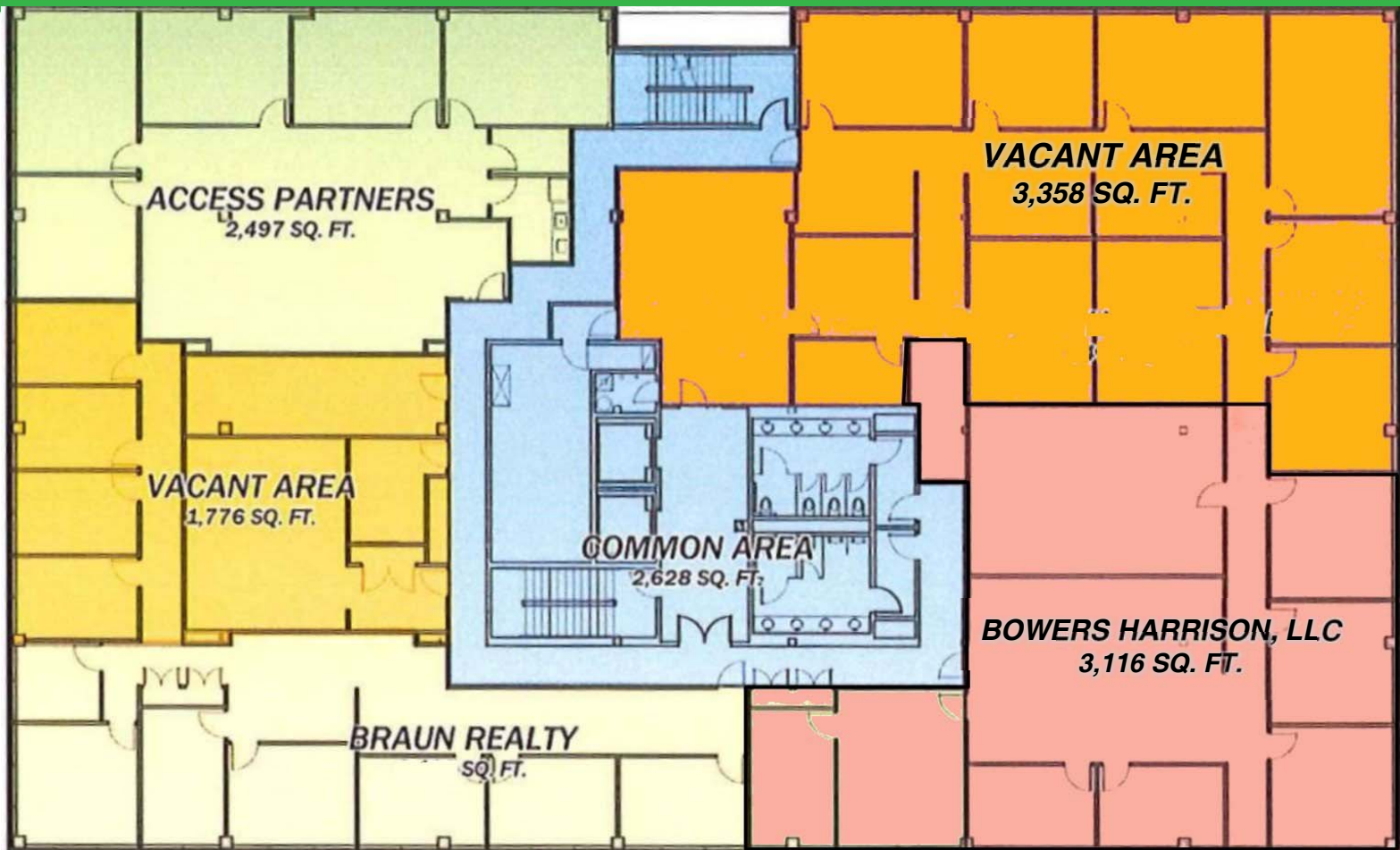


**F.C. Tucker
Commercial**

AVAILABLE

IBM Building

25 NW Riverside Drive
EVANSVILLE, IN 47708



IBM BUILDING

25 N.W. RIVERSIDE DR. EVANSVILLE, IN 47708 | SECOND FLOOR

For More Information, Contact:

Aaron Kendall, CCIM

Direct: 812.480.8100

Fax: 812.473.6684

aaronkendall@fctuckercommercial.com



7820 Eagle Crest Blvd. Suite 200
Evansville, IN • 47715
812-473-6677 • Fax: 812-473-6684



FCTuckerCommercial.com

The information contained herein was obtained from sources we consider reliable. We cannot be responsible, however, for errors, omissions, prior sale, and withdrawal from the market or change in price.