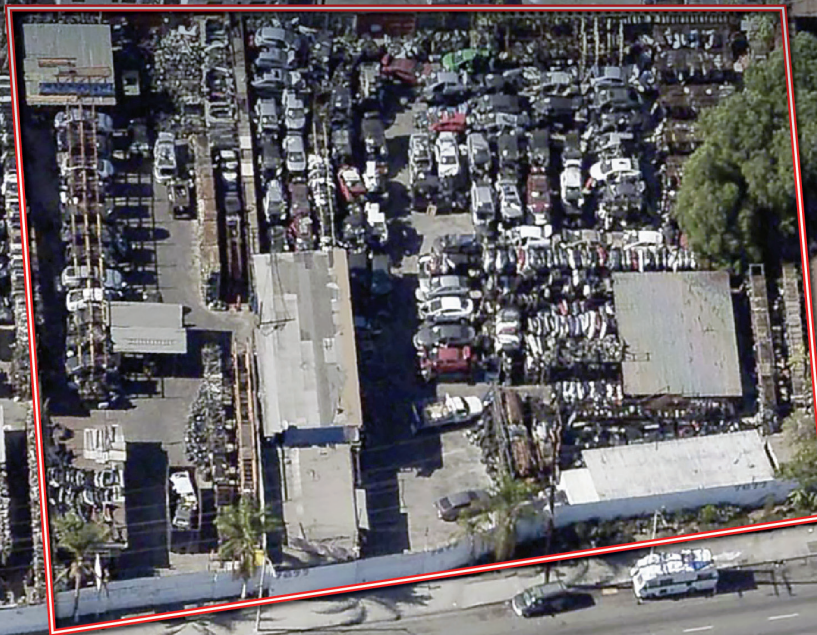


**41,922 SF
INDUSTRIAL LAND**

7683-7701 S. ALAMEDA ST, LOS ANGELES, CA 90001

Lou Dillon Ave



Alameda St

FOR LEASE

PROPERTY HIGHLIGHTS

- Alameda Corridor Location
- Close Proximity to the Port of Los Angeles and Long Beach
- Large Surface Storage Yard
- 2 Office buildings Included
- Tall Fencing and Several Entry Gates
- Industrial Zoned

PROPERTY FEATURES

Land Area:41,922 SF
Concrete Paved:..... Yes
Fenced and Gated:..... Yes
Bathrooms: 2
Sewer: Yes
Power: Yes
Zoning:.....LCM2

ASKING RATE:

- \$31,441.50 (\$0.75 PSF) per month, gross



JOHN COSTA	Lic. #01940766	424-329-7505	jcosta@voitco.com
DAVID FULTS	Lic. #01242123	323-791-0038	dfults@voitco.com
BRIAN MCLOUGHLIN	Lic. #01268410	323-633-1074	bmcloughlin@voitco.com
KEVIN FULTS	Lic. #02111820	949-887-8067	kfults@voitco.com

1025 W. 190th St., Suite 350 | Los Angeles, CA 90248 | 424.329.7500 | 424.233.0736 FAX | Lic #01991785 | www.voitco.com

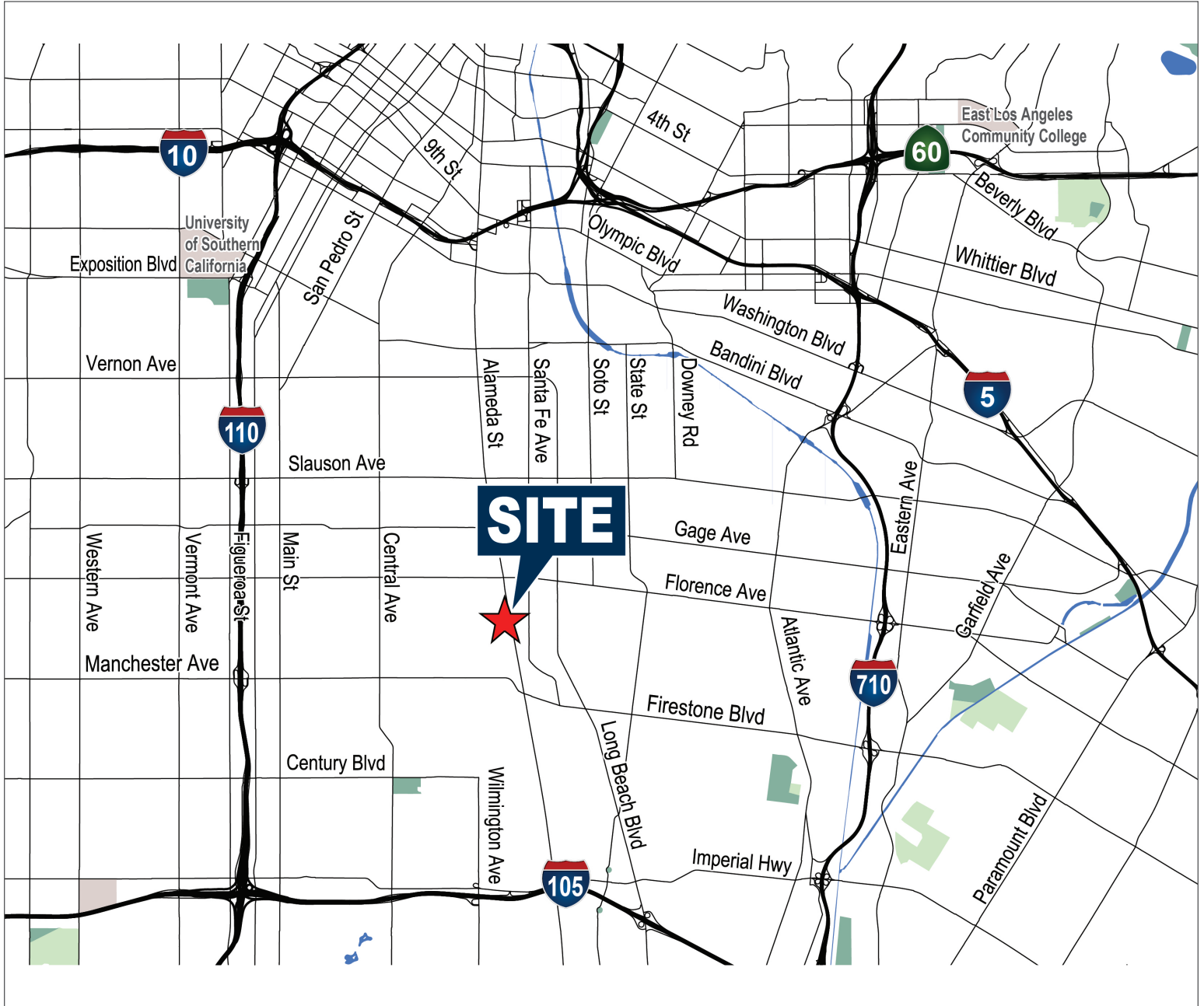
Licensed as Real Estate Salespersons by the DRE. The information contained herein has been obtained from sources we deem reliable. While we have no reason to doubt its accuracy, we do not guarantee it. ©2023 Voit Real Estate Services, Inc. All Rights Reserved. Lic #01991785.

FOR LEASE

7683-7701 S. ALAMEDA ST, LOS ANGELES, CA 90001

41,922 SF

INDUSTRIAL LAND



Voit

REAL ESTATE SERVICES

JOHN COSTA

Lic. #01940766

424-329-7505

jcosta@voitco.com

DAVID FULTS

Lic. #01242123

323-791-0038

dfults@voitco.com

BRIAN MCLOUGHLIN

Lic. #01268410

323-633-1074

bmcloughlin@voitco.com

RYAN HUGUENARD

Lic. #02033549

310-819-7077

rhuguenard@voitco.com

KEVIN FULTS

Lic. #02111820

949-887-8067

kfults@voitco.com

1025 W. 190th St., Suite 350 | Los Angeles, CA 90248 | 424.329.7500 | 424.233.0736 FAX | Lic #01991785 | www.voitco.com

Licensed as Real Estate Salespersons by the DRE. The information contained herein has been obtained from sources we deem reliable. While we have no reason to doubt its accuracy, we do not guarantee it. ©2023 Voit Real Estate Services, Inc. All Rights Reserved. Lic #01991785.