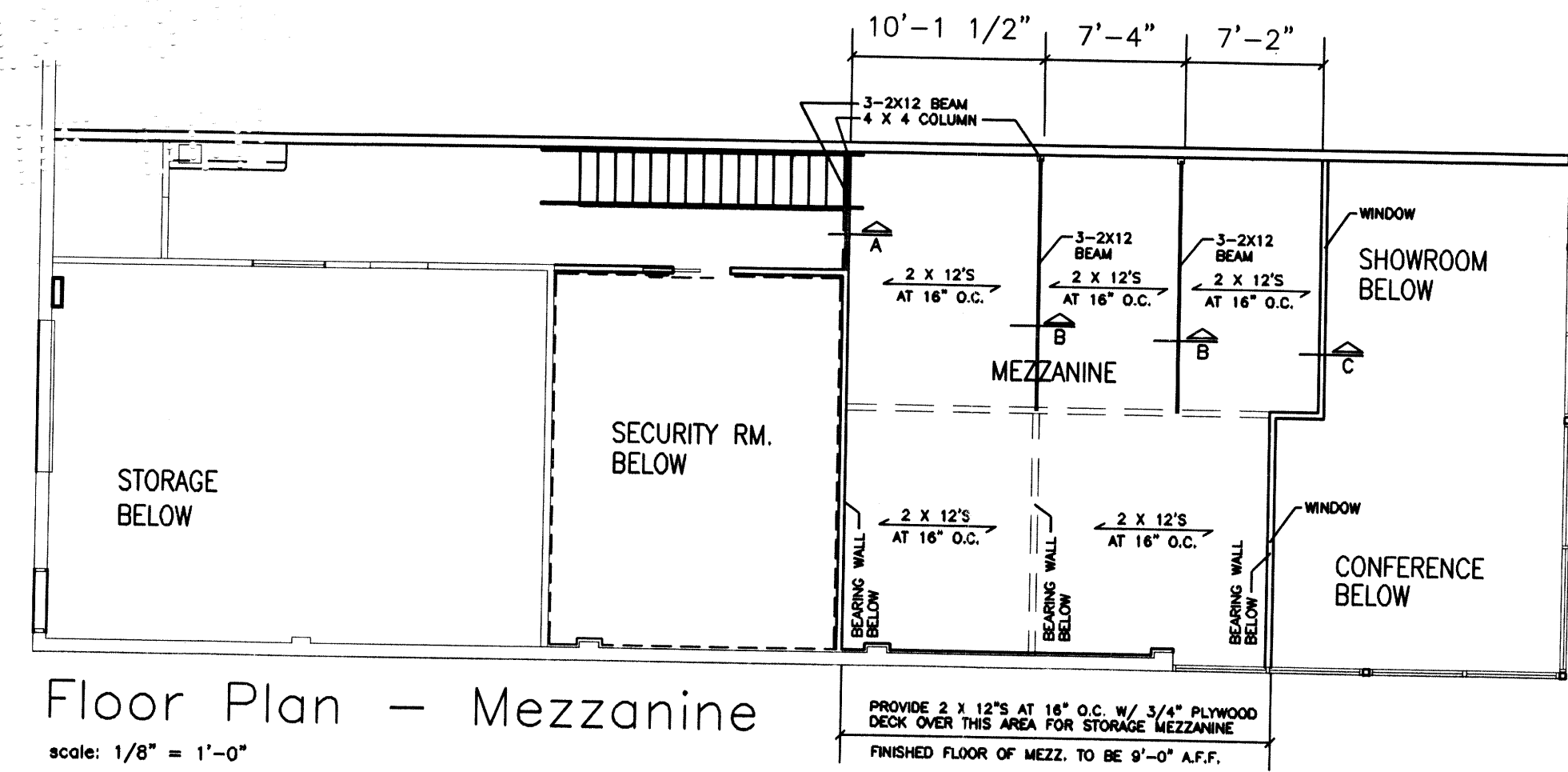
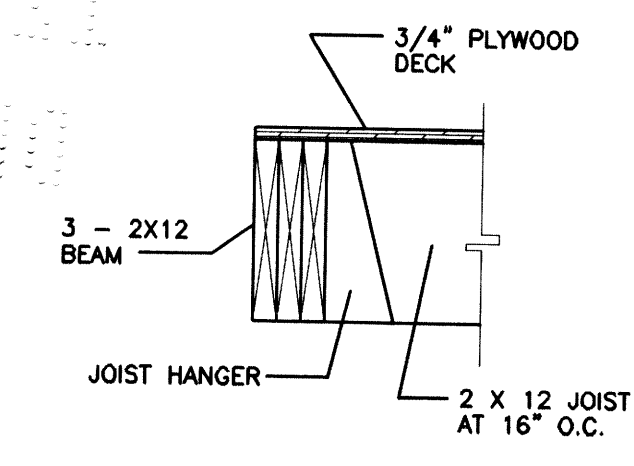


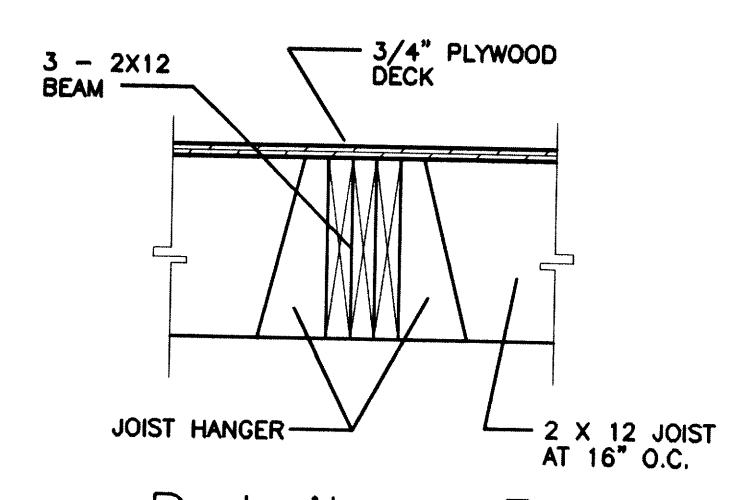
Ham
11.23.03



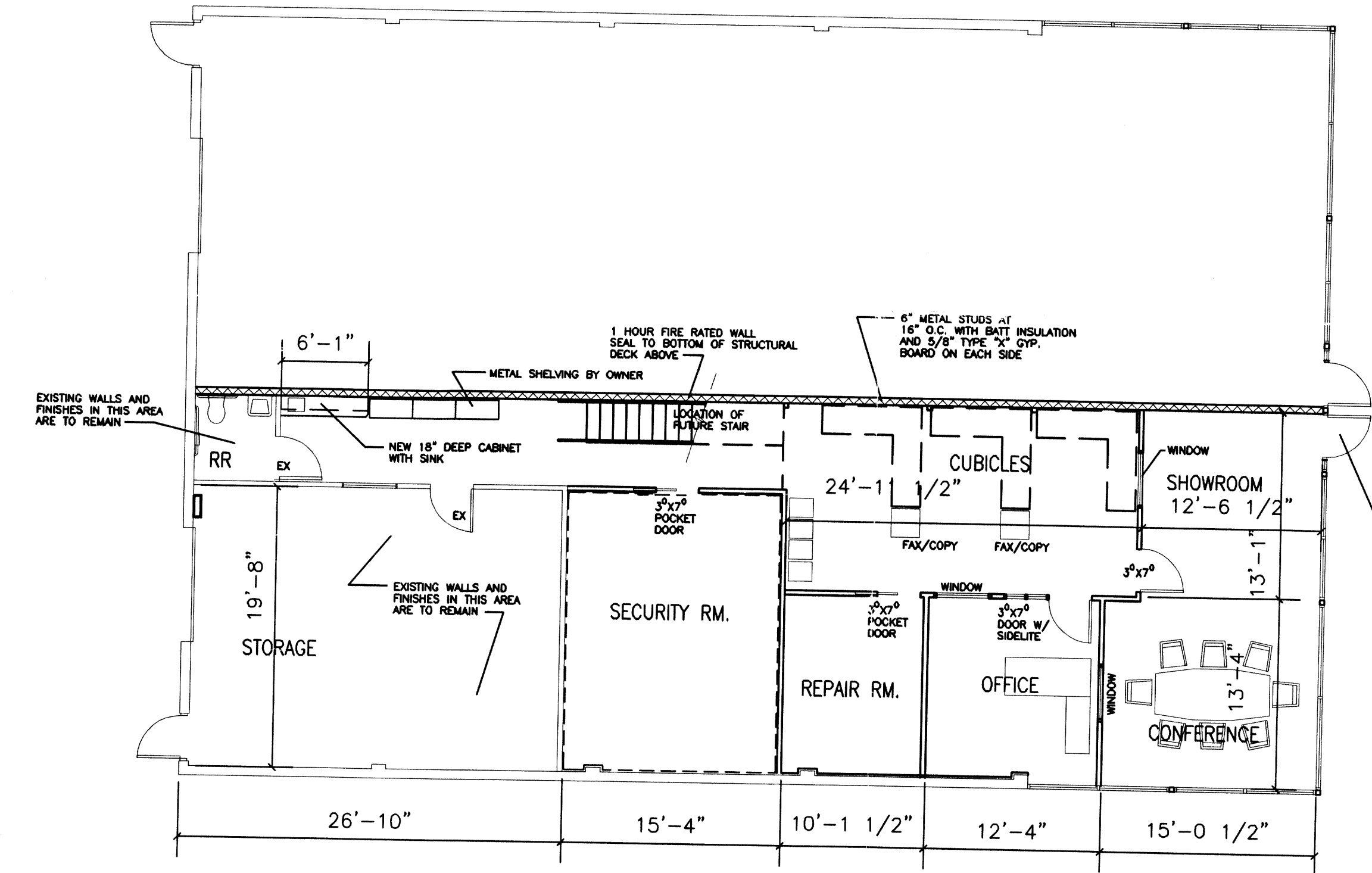
Floor Plan - Mezzanine
scale: 1/8" = 1'-0"



Detail - A
scale: 1" = 1'-0"



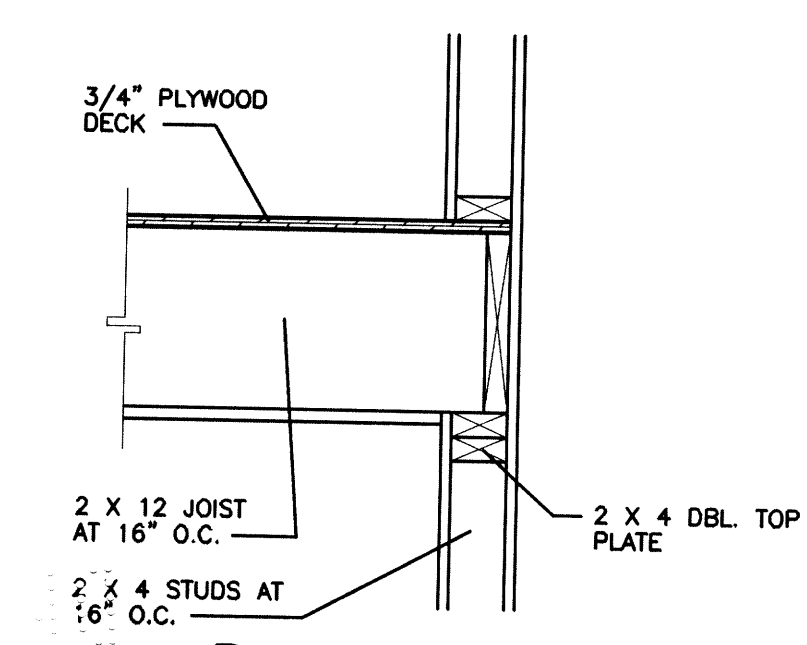
Detail - B
scale: 1" = 1'-0"



Floor Plan
scale: 1/8" = 1'-0"

GENERAL NOTES:
1. ALL WORK AND MATERIAL SHALL CONFORM TO THE FLORIDA BUILDING CODE.
2. COORDINATE ALL FINISHES AND PAINT COLORS WITH OWNER.
3. INTERIOR PARTITION WALLS SHALL BE 2 X 4 STUD AT 16" O.C. WITH 5/8" GYP. EACH SIDE.

DESIGN CRITERIA FOR NEW STOREFRONT DOORS
NEW DOORS TO BE INSTALLED SHALL BE CODE APPROVED / TESTED ASSEMBLIES
CONTRACTOR TO PROVIDE SHOP DRAWINGS DOCUMENTING APPROVED TESTING AND INDICATING APPROVED ATTACHMENT DETAILS TO ARCHITECT FOR APPROVAL
THE ASSEMBLY SHALL COMPLY WITH THE FOLLOWING DESIGN CRITERIA:
140 MPH WIND SPEED
IMPORTANCE I.0
CATAGORY "C"
WIND PRESSURE 32 POUNDS PER SQUARE FOOT
SUCTION 50 POUNDS PER SQUARE FOOT



Detail - C
scale: 1" = 1'-0"

A Tenant Build Out For:
OKO International Company
336 S. Powerline Road
Deerfield Beach, Florida 33442

Rodney Allen Crockett
A R C H I T E C T
222 University Blvd. #104, Jupiter, Florida 33408 561-443-2876

date: 10.3.2003
rev: 10.18.2003
rev: 11.21.2003
dwg:

A1