



NEW LISTING



RETAIL SPACE AVAILABLE- SHERMAN OAKS, CA

Located on the SWC of Ventura / Matilija

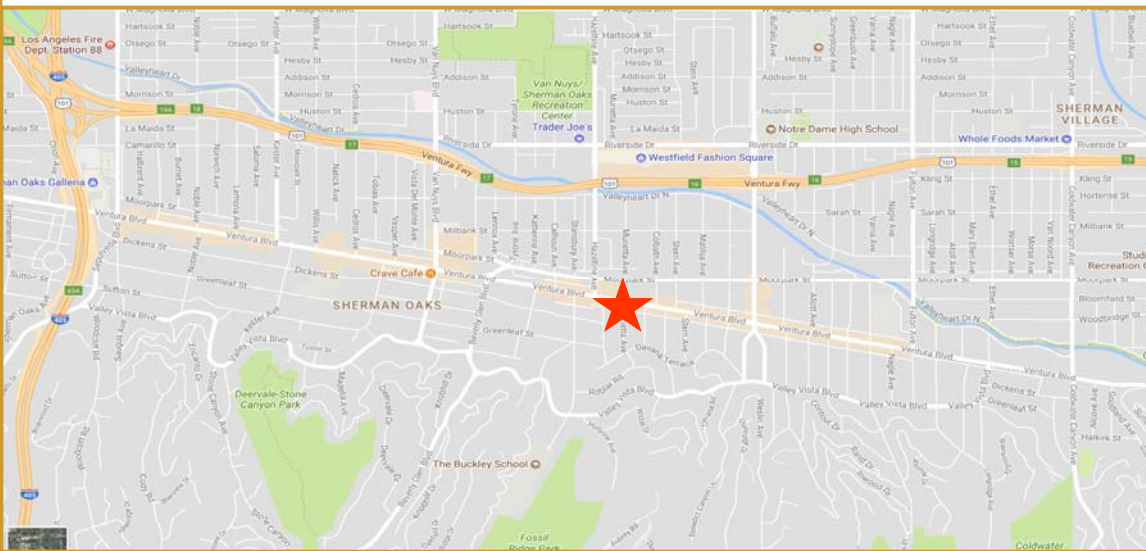
FEATURES

- ±681 SF Space Available
- Exceptional Visibility on-Trendy Ventura Boulevard
- Great neighboring shops
- Signage above storefront
- Great Neighborhood

AREA AMENITIES

- Great Demographics
- Average Household Income:
1 mile radius: \$124,522
3 mile radius: \$112,648
- Total population in a
1 mile radius 25,081
3 mile radius 190,782

**13828 Ventura Boulevard
Sherman Oaks, CA 91423**



CONTACT...

Brett Mero x 23
CA Real Estate Lic # 01190225
Eric Kalfa x 33
CA Real Estate Lic # 01136720

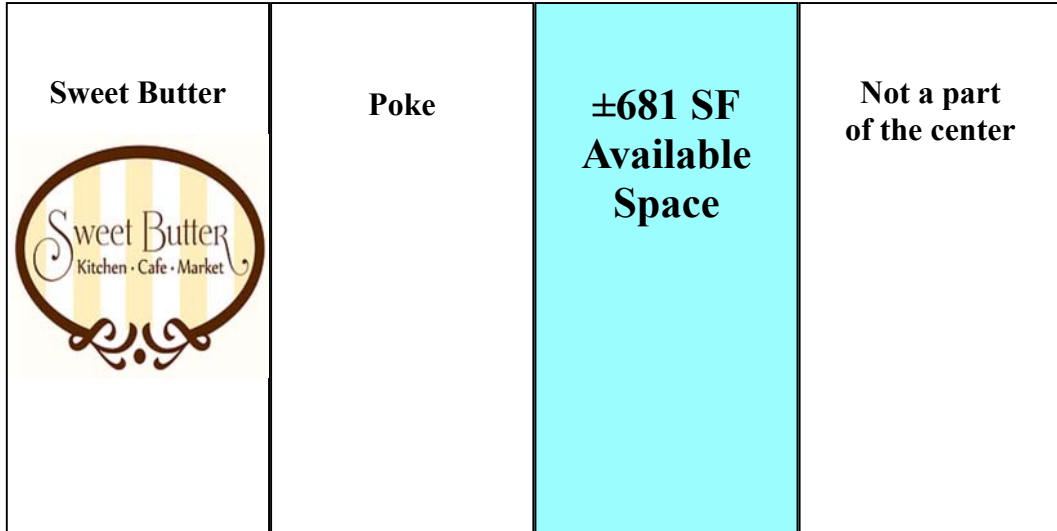
(818) 380-9966
(818) 380-9976 Fax

via e-mail
brett@cbm1.com
eric@cbm1.com

17030 Ventura Blvd, #200
Encino, CA 91316
1517 S. Sepulveda Blvd.
Los Angeles, CA 90025

SITE PLAN

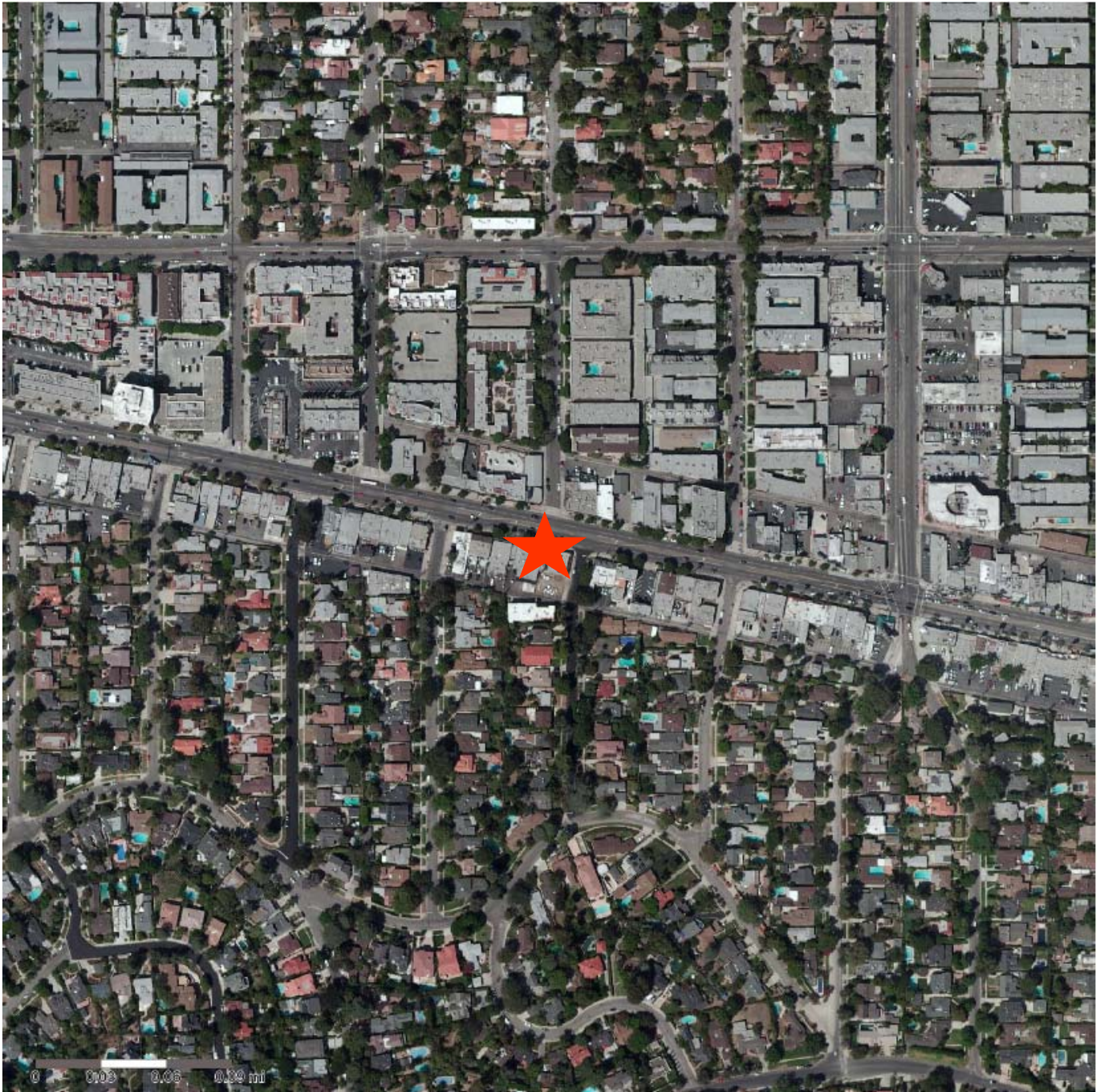
MATILILJA BLVD.



VENTURA BLVD.

NOT TO SCALE
ALL INFORMATION OR DESIGN INDICATED HEREON IS PRELIMINARY ONLY. IT IS SUBJECT TO MODIFICATION BY SURVEY
AND APPROVAL BY GOVERNING AGENCIES.

AERIAL PHOTO



DEMOGRAPHICS

Demographic Snapshot Comparison Report for My Site, 13828 Ventura Blvd, Sherman Oaks, CA, 91423:

| | 1 mile(s) | 3 mile(s) | 5 mile(s) |
|---|-----------|-----------|-----------|
| Population: 2016B | | | |
| Total Population | 25,081 | 190,782 | 516,725 |
| Female Population | 52.26% | 51.13% | 50.21% |
| Male Population | 47.74% | 48.87% | 49.79% |
| Population Density | 7,982 | 6,746 | 6,578 |
| Population Median Age | 40.0 | 39.5 | 37.5 |
| Employed Civilian Population 16+ | 14,552 | 103,843 | 267,230 |
| % White Collar | 81.6% | 72.4% | 64.0% |
| % Blue Collar | 18.4% | 27.6% | 36.0% |
| Total Q1 2017 Employees | 13,732 | 86,912 | 215,465 |
| Total Q1 2017 Establishments* | 2,454 | 12,809 | 29,069 |
| Population Growth 2000-2010 | 7.18% | 3.04% | 1.76% |
| Population Growth 2016B-2021 | 1.65% | 1.29% | 0.95% |
| Income: 2016B | | | |
| Average Household Income | \$124,522 | \$112,648 | \$104,657 |
| Median Household Income | \$73,879 | \$67,239 | \$59,917 |
| Per Capita Income | \$62,398 | \$49,693 | \$41,547 |
| Avg Income Growth 2000-2010 | 40.69% | 37.17% | 28.84% |
| Avg Income Growth 2016B-2021 | 15.82% | 15.91% | 15.35% |
| Households: 2016B | | | |
| Households | 12,561 | 83,931 | 204,204 |
| Average Household Size | 2.01 | 2.26 | 2.50 |
| Hhld Growth 2000-2010 | 1.03% | 1.24% | 1.44% |
| Hhld Growth 2016B-2021 | 1.39% | 1.91% | 2.22% |
| Housing Units: 2016B | | | |
| Occupied Units | 12,561 | 83,931 | 204,204 |
| % Occupied Units | 98.33% | 97.84% | 97.27% |
| % Vacant Housing Units | 1.67% | 2.16% | 2.73% |
| Owner Occ Housing Growth 2000-2010 | 2.01% | 1.68% | 0.21% |
| Owner Occ Housing Growth 2000-2021 | 4.22% | 5.17% | 3.53% |
| Owner Occ Housing Growth 2016B-2021 | 0.98% | 1.06% | 1.15% |
| Occ Housing Growth 2000-2010 | 1.03% | 1.24% | 1.44% |
| Occ Housing Growth 2010-2021 | 7.84% | 8.90% | 8.58% |
| Occ Housing Growth 2016B-2021 | 1.39% | 1.91% | 2.22% |
| Race and Ethnicity: 2016B | | | |
| % American Indian or Alaska Native Population | 0.26% | 0.43% | 0.51% |
| % Asian Population | 6.86% | 6.56% | 7.70% |
| % Black Population | 4.79% | 4.66% | 4.57% |
| % Hawaiian or Pacific Islander Population | 0.10% | 0.09% | 0.11% |
| % Multirace Population | 4.85% | 4.80% | 5.06% |
| % Other Race Population | 3.31% | 10.02% | 17.26% |
| % White Population | 79.83% | 73.44% | 64.79% |
| % Hispanic Population | 12.02% | 24.43% | 38.22% |
| % Non Hispanic Population | 87.98% | 75.57% | 61.78% |
| Seasonal Population Trending | | | |
| Q2 2014 | 151 | 948 | 3,314 |
| Q3 2014 | 159 | 1,011 | 3,541 |
| Q4 2014 | 158 | 988 | 3,480 |
| Q1 2015 | 152 | 976 | 3,516 |
| Q2 2015 | 162 | 1,075 | 3,814 |
| Q3 2015 | 185 | 1,170 | 4,112 |
| Q4 2015 | 191 | 1,232 | 4,197 |
| Q1 2016 | 200 | 1,259 | 4,333 |
| Q2 2016 | 200 | 1,259 | 4,333 |