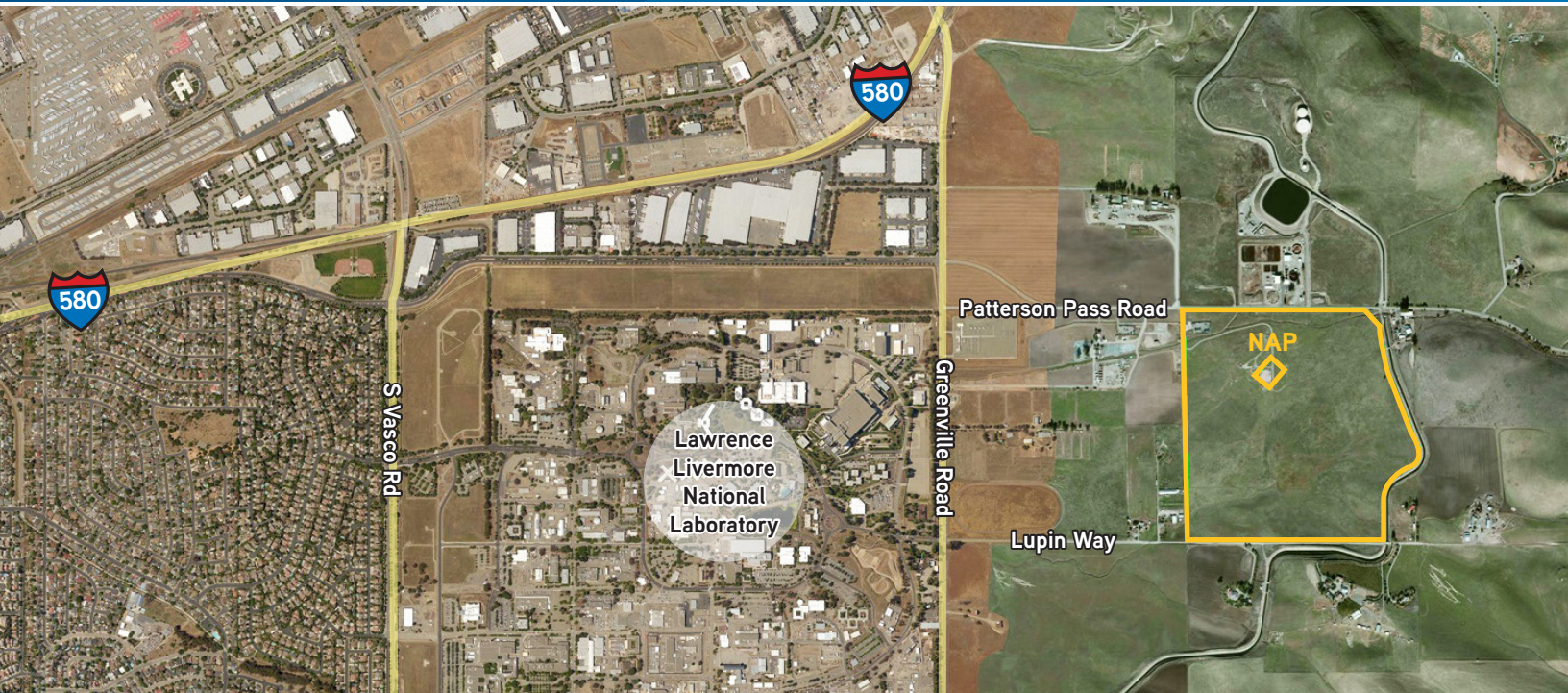


±143 ACRES

Land for Sale



8477 PATTERSON PASS ROAD, LIVERMORE, CA



Income Producing Property:

- > Approximately 143 acres
- > APN: 099A-1650-003-09
- > Level, usable parcel
- > Close proximity to Livermore with easy access to I-580
- > Scenic views
- > Alameda County Zoning: A - Agriculture

Demographics (2016):

| | 3 Mile | 5 Mile | 10 Mile |
|--------------------|-----------|-----------|-----------|
| Population | 16,088 | 48,964 | 130,855 |
| Daytime Population | 22,303 | 36,671 | 67,642 |
| Avg. HH Income | \$150,596 | \$136,087 | \$141,584 |

LIVERMORE

CALIFORNIA



SINCE 1918
World's Fastest
LIVERMORE RODEO
SECOND WEEKEND IN JUNE

SANDRA WECK
+1 925 227 6230
sandra.weck@colliers.com
CA License No. 00861536

COLLIERS INTERNATIONAL
3825 Hopyard Road, Suite 195
Pleasanton, CA 94588
www.colliers.com