

**NOW  
LEASING**

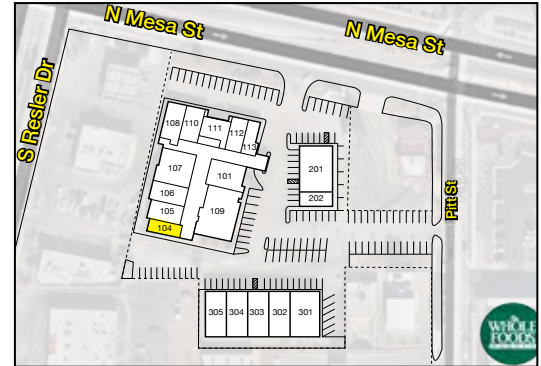
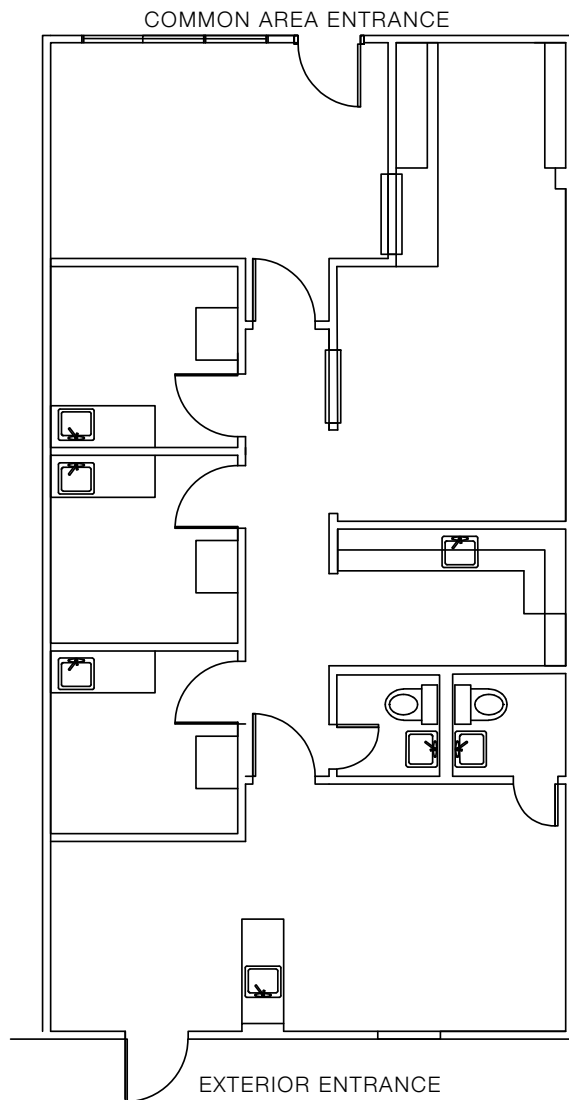
**MEDICAL/PROFESSIONAL OFFICE  
6955 NORTH MESA  
SUNWEST PROFESSIONAL PLAZA - EL PASO-WEST**

**LOCATION:**

**AMENITIES:**

**APPROX. 1,511 RSF  
SUITE 104 - 1ST FLOOR**

- Large, Open Reception with Separate Admin Office
- Three to Four Exam Rooms/Offices, Lab/Break Room, Private Restrooms and Storage
- Signage Available
- Individual HVAC and Heating Systems
- Ample Free Parking



**TRAFFIC COUNT**

**27,636+** At the Intersection  
per day of North Mesa & Resler

**NEARBY**

La Villita Retail Center Anchored by Whole Foods Market, Wells Fargo, Albertsons, Coronado High School, Interstate 10



**915-532-3456**  
[www.epleasing.com](http://www.epleasing.com) | [info@epleasing.com](mailto:info@epleasing.com)

PROFESSIONALLY MANAGED BY EP SHALOM MANAGEMENT, LLC  
444 EXECUTIVE CENTER BLVD., SUITE 120, EL PASO, TX 79902

Notwithstanding any other information (including, without limitation, any marketing, sales, advertising, brochures, or similar information), all prices, building design, architectural renderings, plans, amenities, features and specifications or any and all improvements to any part of the property are subject to change or cancellation without notice.