

FOR LEASE

COASTAL COMMUNITY BANK BUILDING

5415

EVERGREEN WAY

Everett, WA 98203



PROPERTY FEATURES

- + 18,075 RSF (Divisible to 3,606 SF)
- + \$14.00/RSF/NNN
- + Efficient first floor space on Evergreen Way
- + Mixture of private office and bullpen areas
- + Abundant natural light
- + 3.2/1,000 SF parking ratio: \pm 145 stalls (potential for additional parking)
- + Building and signage visibility from Evergreen Way with a traffic count of 28,453 vehicles per day
- + Easy access to I-5, SR-99, SR-527. Everett Transit, Line 7 bus stop is immediately in front on Evergreen Way
- + Walking distance to retail amenities such as restaurants, grocery and medical
- + Opportunity to share the building with the largest community bank based in Snohomish County

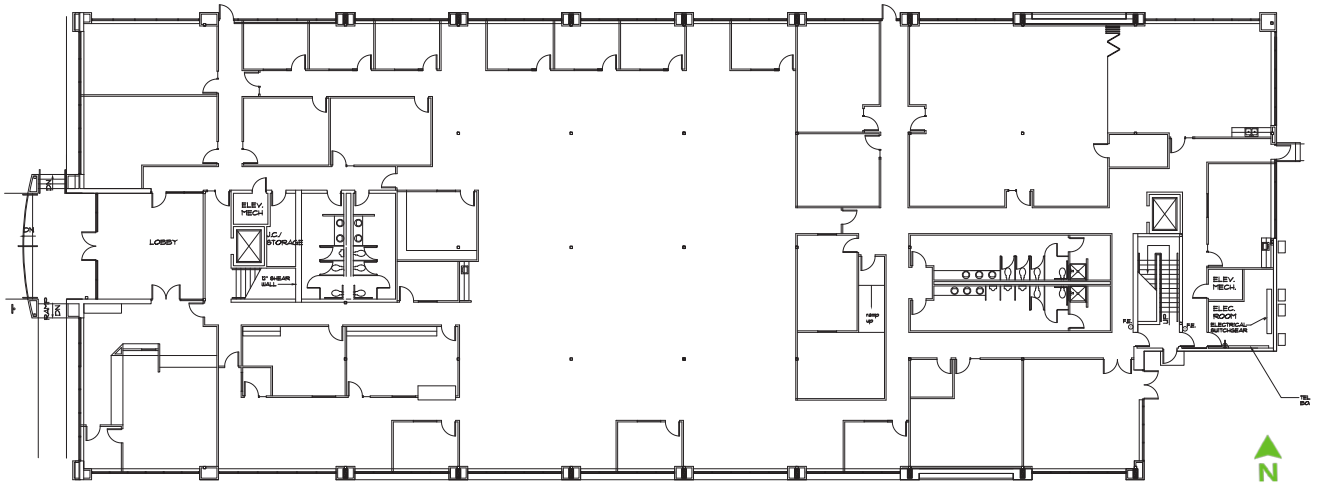
www.cbre.com/bellevue

CBRE

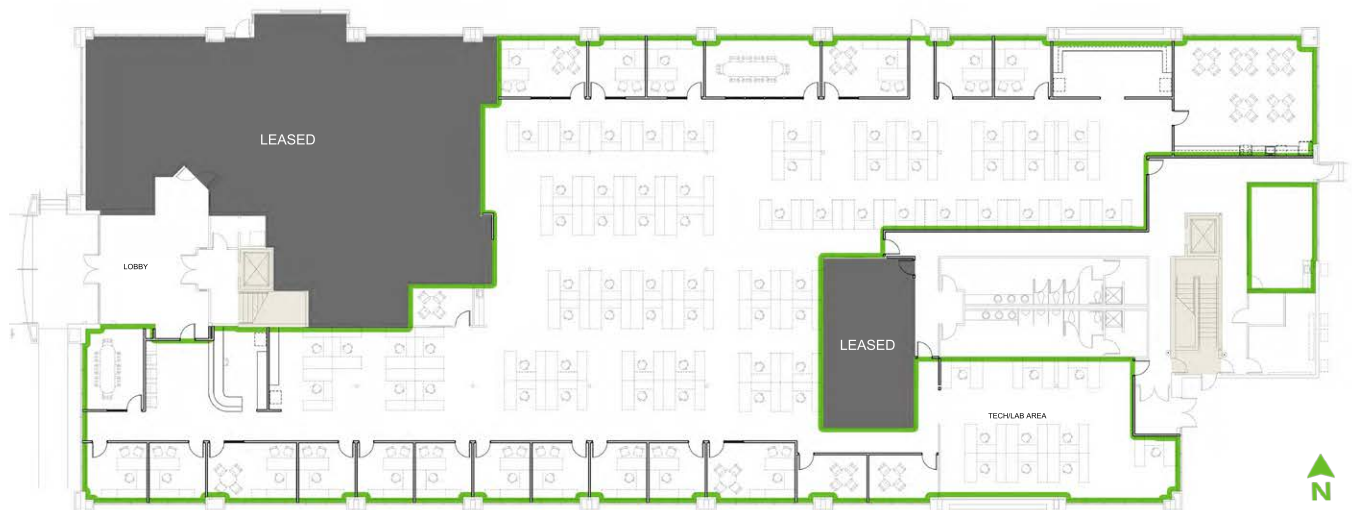
FOR LEASE COASTAL COMMUNITY BANK BUILDING



EXISTING FLOOR PLAN



SINGLE TENANT OPTION



Suite A: ±18,075 SF



TWO TENANT OPTION

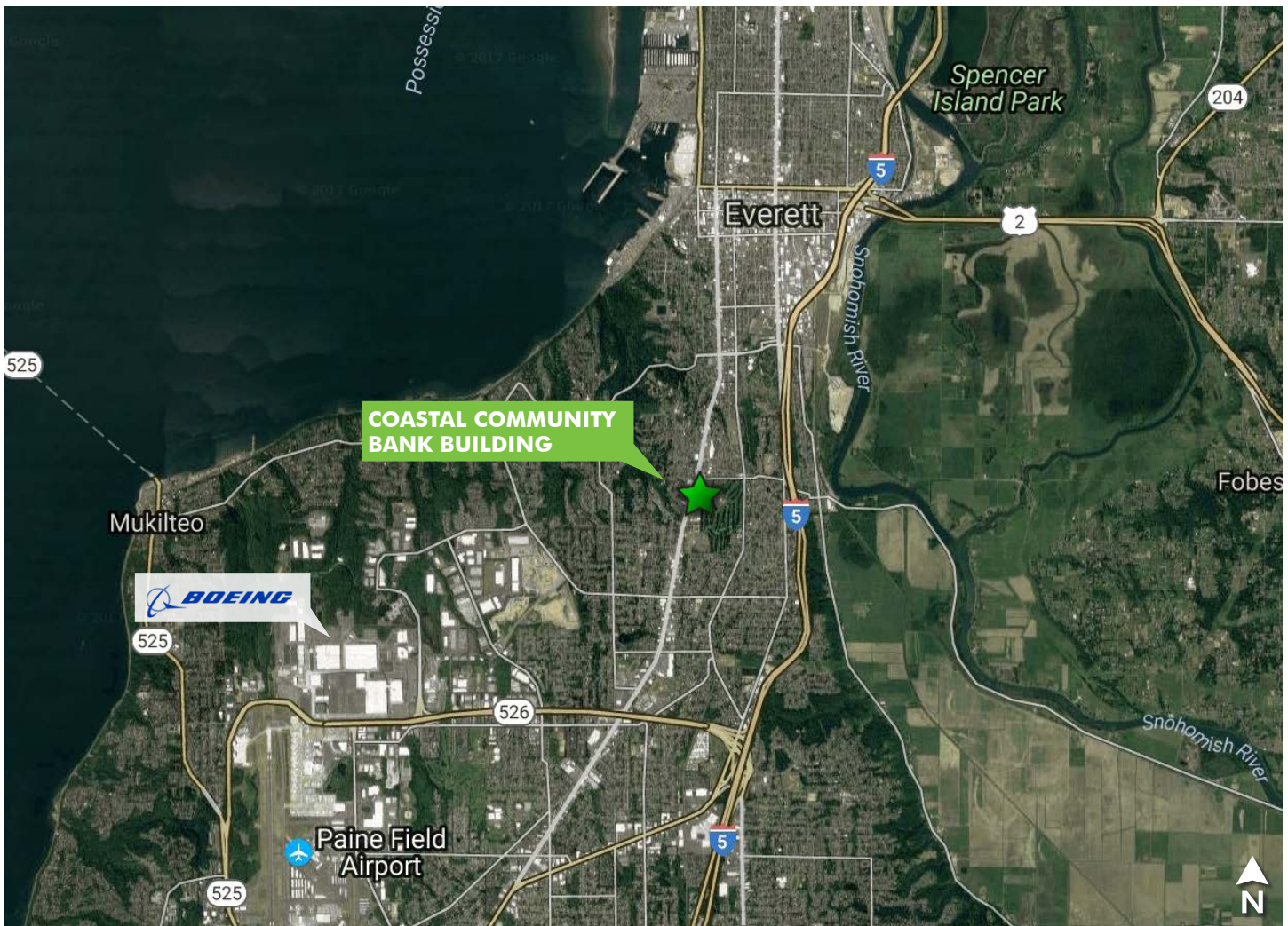


THREE TENANT OPTION



FOR LEASE COASTAL COMMUNITY BANK

5415
EVERGREEN WAY
Everett, WA 98203



CONTACT US

RIC BRANDT

Senior Vice President
+1 425 462 6901
ric.brandt@cbre.com

ERIK LARSON

Senior Associate
+1 425 462 6954
erik.larson@cbre.com

JOHN BAUER

Senior Vice President
+1 425 462 6906
john.bauer@cbre.com

CBRE, Inc.
10885 NE 4th Street
Suite 500
Bellevue, WA 98004

© 2017 CBRE, Inc. This information has been obtained from sources believed reliable. We have not verified it and make no guarantee, warranty or representation about it. Any projections, opinions, assumptions or estimates used are for example only and do not represent the current or future performance of the property. You and your advisors should conduct a careful, independent investigation of the property to determine to your satisfaction the suitability of the property for your needs. Photos herein are the property of their respective owners and use of these images without the express written consent of the owner is prohibited. CBRE and the CBRE logo are service marks of CBRE, Inc. and/or its affiliated or related companies in the United States and other countries. All other marks displayed on this document are the property of their respective owners. 5-22-2017 AM

www.cbre.com/bellevue

CBRE