

# FOR LEASE 9,000 SF

23042 N. 16TH LANE | PHOENIX | AZ

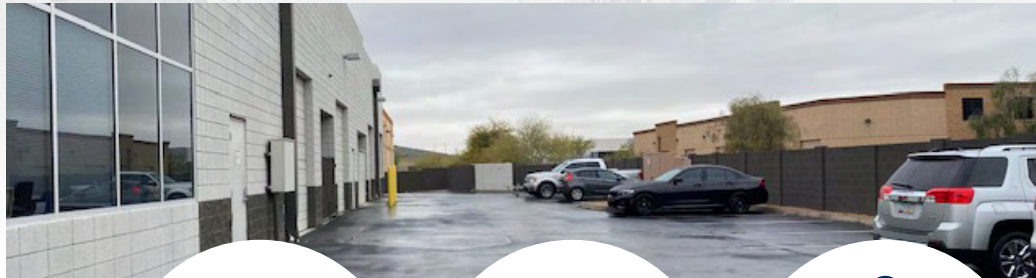
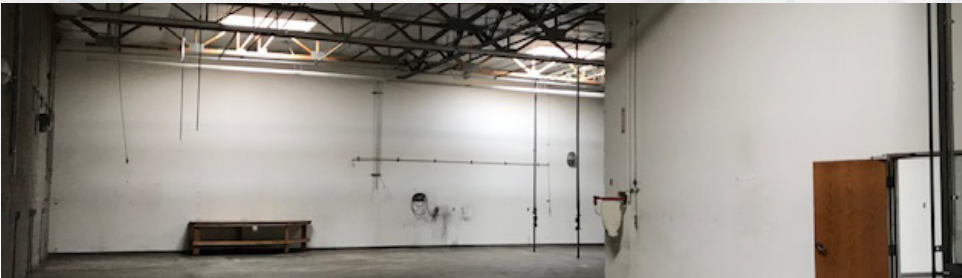
23042

# DAUM

COMMERCIAL REAL ESTATE SERVICES



## DEER VALLEY SUBMARKET | OFFICE/WAREHOUSE BUILDING



FOR MORE INFORMATION, CONTACT:

**TREVOR MCKENDRY**  
Executive Vice President  
P: 602.575.2332 | F: 602.296.0819  
tmckendry@daumcre.com

**CHRIS ROGERS**  
Executive Vice President  
P: 602.575.2309 | F: 602.296.0819  
crogers@daumcre.com



10,792 SF  
TOTAL BUILDING SIZE



\$1.75/SF GROSS  
ASKING RATE



DEER VALLEY  
PRIME SUBMARKET  
LOCATION

D/AQ Corp. #01129558. Maps Courtesy @Google & @Microsoft. Although all information is furnished regarding for sale, rental or financing is from sources deemed reliable, such information has not been verified and no express representation is made nor is any to be implied as to the accuracy thereof, and it is submitted subject to errors, omissions, changes of price, rental or other conditions, prior sale, lease or financing, or withdrawal without notice.

# FOR LEASE 9,000 SF

23042 N. 16TH LANE | PHOENIX | AZ



## PROPERTY HIGHLIGHTS



9,000 SF  
SUITE SIZE



HEAVY POWER



18'  
CLEAR HEIGHT

- Zoning: IND Park
- Year Built: 2005
- Loading: 2 Grade Level  
Doors 10' x 12'
- Evaporative Cooled Warehouse
- Suites 1 & 2 Contiguous
- Available Immediately
- Shared Fenced Yard Area
- Cul-de-sac Location
- Deer Valley Submarket -TSMC  
9.5 Miles Away

### SUITE 1

- 7,000 SF
- 4 Offices
- Reception Area
- Server Room
- Break Room
- 2 Restrooms

### SUITE 2

- 2,000 SF
- Independent Entrance
- No Office Build Out
- Evap Cooled

## FOR MORE INFORMATION, CONTACT:

### TREVOR MCKENDRY

Executive Vice President

P: 602.575.2332

F: 602.296.0819

tmckendry@daumcre.com

### CHRIS ROGERS

Executive Vice President

P: 602.575.2309

F: 602.296.0819

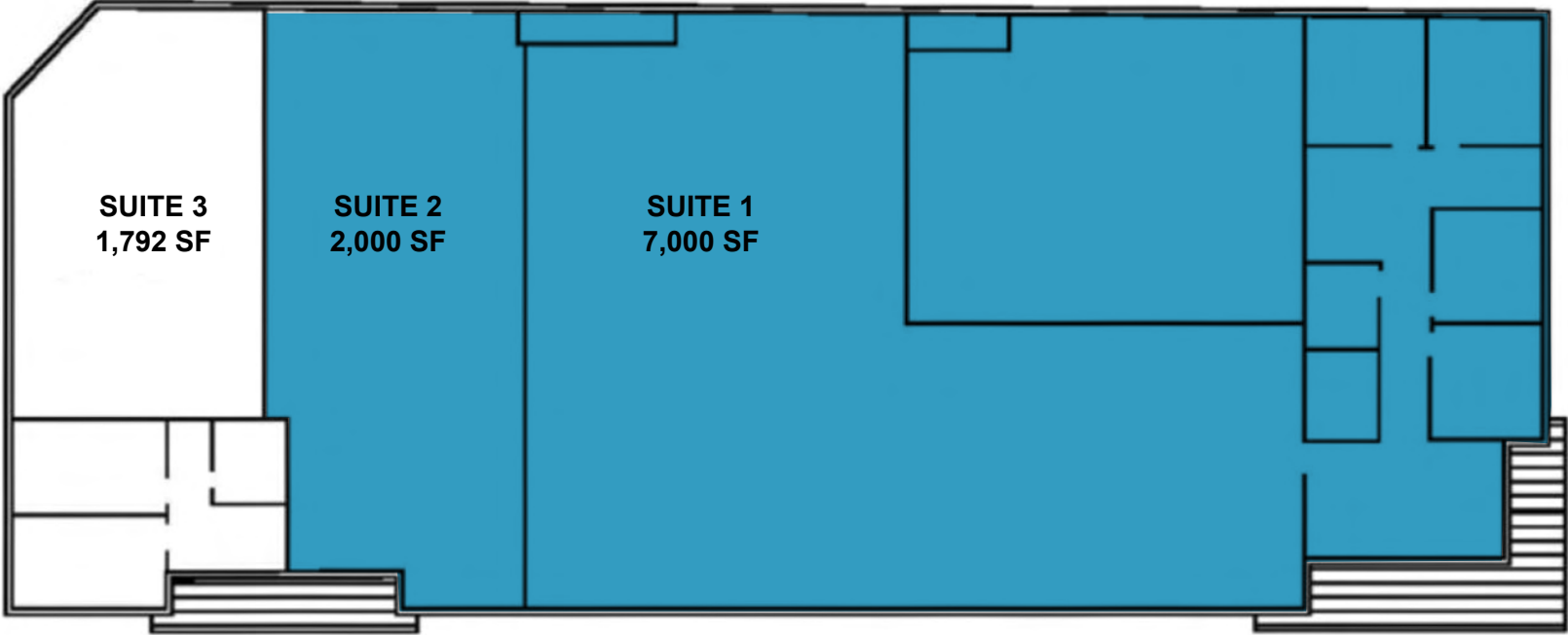
crogers@daumcre.com

D/AQ Corp. #01129558. Maps Courtesy ©Google & ©Microsoft. Although all information is furnished regarding for sale, rental or financing is from sources deemed reliable, such information has not been verified and no express representation is made nor is any to be implied as to the accuracy thereof, and it is submitted subject to errors, omissions, changes of price, rental or other conditions, prior sale, lease or financing, or withdrawal without notice.



# FOR LEASE 9,000 SF

23042 N. 16TH LANE | PHOENIX | AZ



**FOR MORE INFORMATION, CONTACT:**

**TREVOR MCKENDRY**  
Executive Vice President  
P: 602.575.2332 | F: 602.296.0819  
tmckendry@daumcre.com

**CHRIS ROGERS**  
Executive Vice President  
P: 602.575.2309 | F: 602.296.0819  
crogers@daumcre.com

**FLOOR PLAN**

D/AQ Corp. #01129558. Maps Courtesy ©Google & ©Microsoft. Although all information is furnished regarding for sale, rental or financing is from sources deemed reliable, such information has not been verified and no express representation is made nor is any to be implied as to the accuracy thereof, and it is submitted subject to errors, omissions, changes of price, rental or other conditions, prior sale, lease or financing, or withdrawal without notice.



# FOR LEASE 9,000 SF

23042 N. 16TH LANE | PHOENIX | AZ



## FOR MORE INFORMATION, CONTACT:

**TREVOR MCKENDRY**  
Executive Vice President  
P: 602.575.2332 | F: 602.296.0819  
tmckendry@daumcre.com

**CHRIS ROGERS**  
Executive Vice President  
P: 602.575.2309 | F: 602.296.0819  
crogers@daumcre.com

## LOCATION MAP

D/AQ Corp. #01129558. Maps Courtesy ©Google & ©Microsoft. Although all information is furnished regarding for sale, rental or financing is from sources deemed reliable, such information has not been verified and no express representation is made nor is any to be implied as to the accuracy thereof, and it is submitted subject to errors, omissions, changes of price, rental or other conditions, prior sale, lease or financing, or withdrawal without notice.

**DAUM**  
COMMERCIAL REAL ESTATE SERVICES

# FOR LEASE 9,000 SF

23042 N. 16TH LANE  
PHOENIX | AZ

## TOP COMPANIES NO. EMPLOYEES

1. TSMC  
20,000 Employees
2. THE ARIZONA REPUBLIC  
1,011 Employees
3. COX  
2,158 Employees
4. HONEYWELL  
6,111 Employees
5. DISCOVER  
3,003 Employees
6. BEST WESTERN  
966 Employees
7. AMERICAN EXPRESS  
7,603 Employees
8. PETSMART  
2,034 Employees

**DAUM**  
COMMERCIAL REAL ESTATE SERVICES

