

CBRE

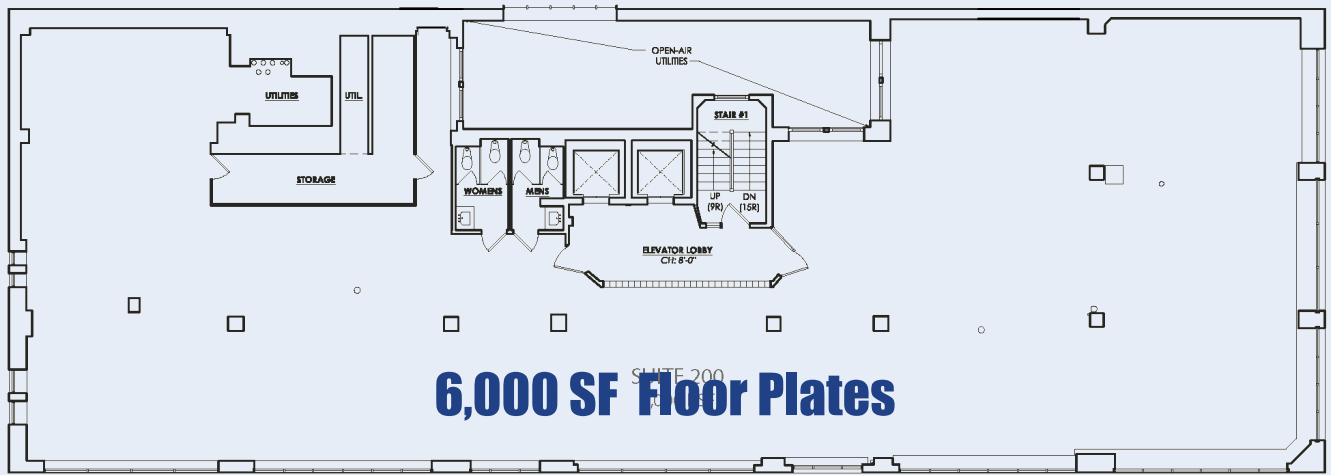
700-702

CHESTNUT STREET, PHILADLEPHIA, PA



AVAILABLE SPACE:
2ND FLOOR / 6,000 SF
4TH FLOOR / 2,800-6,000 SF





6,000 SF Floor Plates

7TH STREET

CHESTNUT STREET



A Boutique Office Building Space Featuring 12" Concrete Slab Ceilings

Scheduled Lobby Renovations



For more information, contact:

MARK W. ADZICK
 Senior Associate
 +1 215 561 8956
 mark.adzick@cbre.com
 Licensed: PA

© 2017 CBRE, Inc. All rights reserved. This information has been obtained from sources believed reliable, but has not been verified for accuracy or completeness. You should conduct a careful, independent investigation of the property and verify all information. Any reliance on this information is solely at your own risk. CBRE and the CBRE logo are service marks of CBRE, Inc. All other marks displayed on this document are the property of their respective owners. Photos herein are the property of their respective owners and use of these images without the express written consent of the owner is prohibited.

CBRE