

- LEGEND**
- PK = P.K. NAIL SET (Found 6/18/04)
 - OHW = OVERHEAD WIRES
 - HYD = HYDRANT
 - MH = MANHOLE
 - CONC = CONCRETE
 - UP = UTILITY POLE
 - BIT = BITUMINOUS PAVEMENT
 - GV = GAS VALVE
 - WV = WATER VALVE
 - FF = FINISHED FLOOR ELEVATION
 - C.O. = CLEAN-OUT
 - CE = CELLAR ENTRANCE
 - HR = STEEL HAND RAIL

TOTAL TRACT AREA
= 45,549 SF = 1.0457 AC.

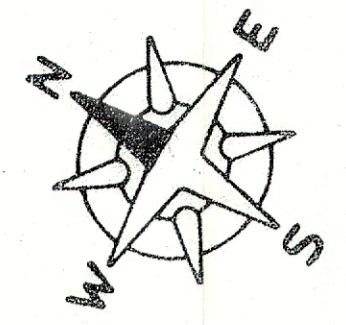
ELEVATIONS SHOWN ARE
BASED ON NGVD 1929.

WAIVER OF SETTING CORNER MARKERS OBTAINED
FROM ULTIMATE USER PURSUANT TO THE BOARD
OF PROFESSIONAL ENGINEERS AND LAND SURVEYORS
REGULATION, N.J.A.C. 13:40-5.1(d).

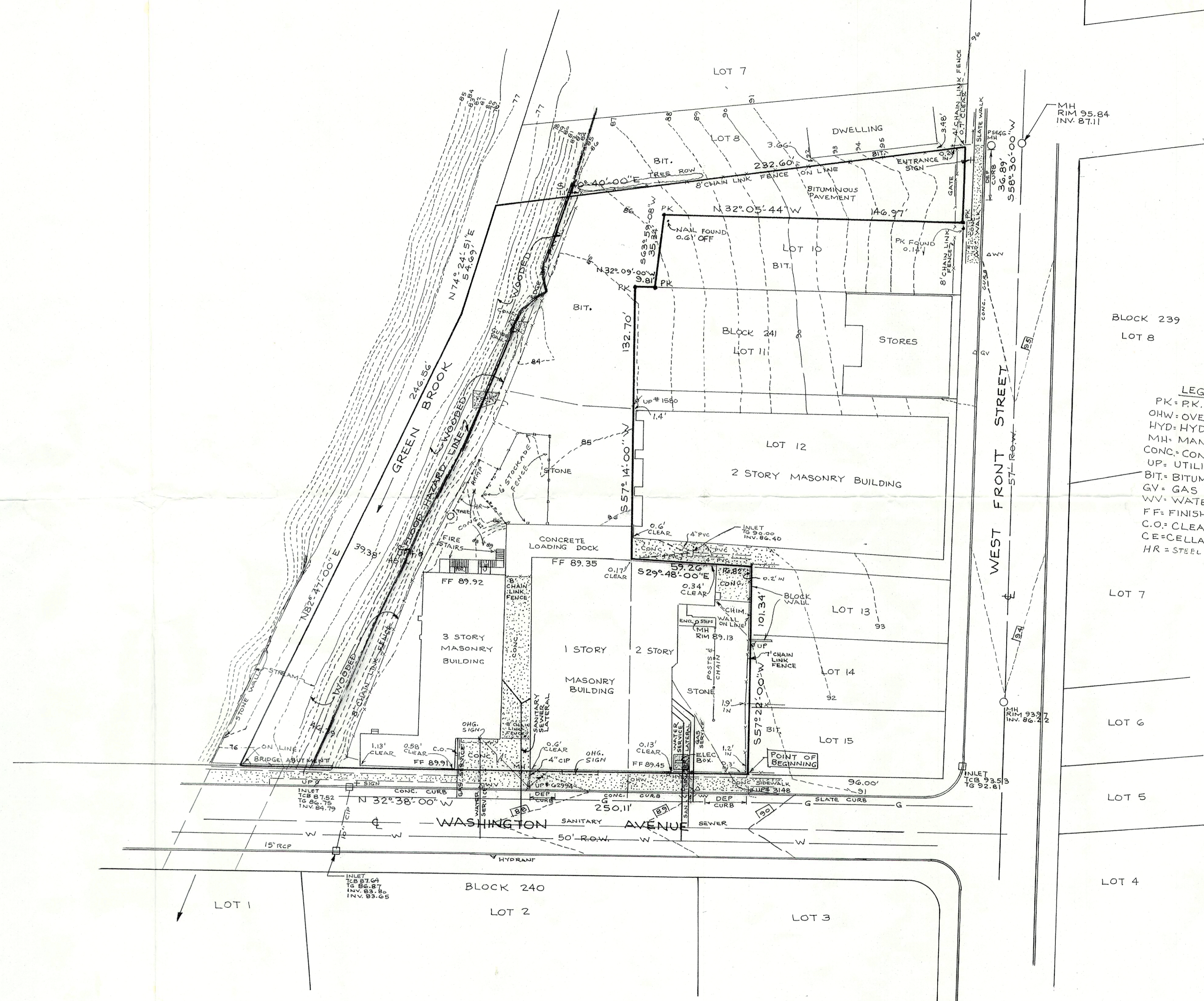
THIS SURVEY IS CERTIFIED ONLY TO:
JORGE PAREDES AND MARIA PAREDES
SYNERGY BANK, ITS SUCCESSORS AND/OR ASSIGNS
LAWYERS TITLE INSURANCE CORPORATION
SUBURBAN TITLE EXAMINERS
JOHN WOOD GOLDSACK, LLC

<p>FISK ASSOCIATES ENGINEERS - SURVEYORS - PLANNERS 631 UNION AVENUE MIDDLESEX, NEW JERSEY 08846 Phone: 732-356-9322 Fax 732-356-6015</p>			
<p>6-18-04 <i>Step M Fisk</i> STEPHEN M. FISK, L.S., Lic. 23919 PAUL A. FISK, P.E., Lic. 26353 L.S. - Professional Land Surveyor P.E. - Professional Engineer</p>			
<p>MAP OF SURVEY 26 WASHINGTON AVENUE LOTS 9,10,17 & 18 BLOCK 241 CITY OF PLAINFIELD UNION COUNTY NEW JERSEY</p>			
1. 6/18/04 - UPDATE SURVEY	R.1.B. SCALE: 1" = 30'	442 / 1-37	P-4239
REVISIONS	SEPTEMBER 25, 2002		

REVISIONS



BLOCK 242
LOT 1



BLOCK 239
LOT 8

LOT 7

LOT 6

LOT 5

LOT 4

- LEGEND**
- PK = P.K. NAIL SET (Found 4/18/04)
 - OHW = OVERHEAD WIRES
 - HYD = HYDRANT
 - MH = MANHOLE
 - CONC = CONCRETE
 - UP = UTILITY POLE
 - BIT = BITUMINOUS PAVEMENT
 - GV = GAS VALVE
 - WV = WATER VALVE
 - FF = FINISHED FLOOR ELEVATION
 - CO = CLEAN-OUT
 - CE = CELLAR ENTRANCE
 - HR = STEEL HAND RAIL

TOTAL TRACT AREA
= 45,549 SF = 1.0457 AC.

ELEVATIONS SHOWN ARE
BASED ON NGVD 1923.

WAIVER OF SETTING CORNER MARKERS OBTAINED
FROM ULTIMATE USER PURSUANT TO THE BOARD
OF PROFESSIONAL ENGINEERS AND LAND SURVEYORS
REGULATION, N.J.A.C. 13:40-5.1(d).

FLOOD HAZARD LINE SHOWN BASED ON NJDEP
DELINEATION OF FLOODWAY AND FLOOD HAZARD
AREA FOR THE GREEN BROOK, CITY OF PLAINFIELD,
BOROUGH OF NORTH PLAINFIELD, UNION AND
SOMERSET COUNTIES, SHEET 3 OF 6, DATED JUNE 1981.

FISK ASSOCIATES
ENGINEERS - SURVEYORS - PLANNERS
631 UNION AVENUE
MIDDLESEX, NEW JERSEY 08846
Phone: 732-356-9322 Fax 732-356-6015

2/12/07 *Steph M. Fisk*
STEPHEN M. FISK, L.S., Lic. 23919
PAUL A. FISK, P.E., Lic. 26353
L.S. - Professional Land Surveyor
P.E. - Professional Engineer

TOPOGRAPHY AND UTILITIES PLAN
26 WASHINGTON AVENUE -
LOTS 9, 10, 17 & 18 BLOCK 241
CITY OF PLAINFIELD
UNION COUNTY NEW JERSEY

REVISIONS	R1.B SCALE: 1"=30'	442/1-37	P-4239-T
	FEBRUARY 12, 2007		