

SUNSET PROFESSIONAL PARK

801 Sunset Drive
Johnson City, TN 37604

Location

Near the intersection of Sunset Drive and Knob Creek Road

Available for Lease

Suite D-3: 1,200 SF office
For lease: \$10/SF/year NNN

Highlights

Professional business park setting in central Johnson City

Parking in front and rear of building

Proximal to restaurants and shopping

Approx. 0.6 miles from the Mall at Johnson City

Approx. 1 mile from Med Tech corridor

Approx. 1 mile off I-26, exit 20

Traffic Counts

Sunset Drive: 14,679 (2014)

Demographics

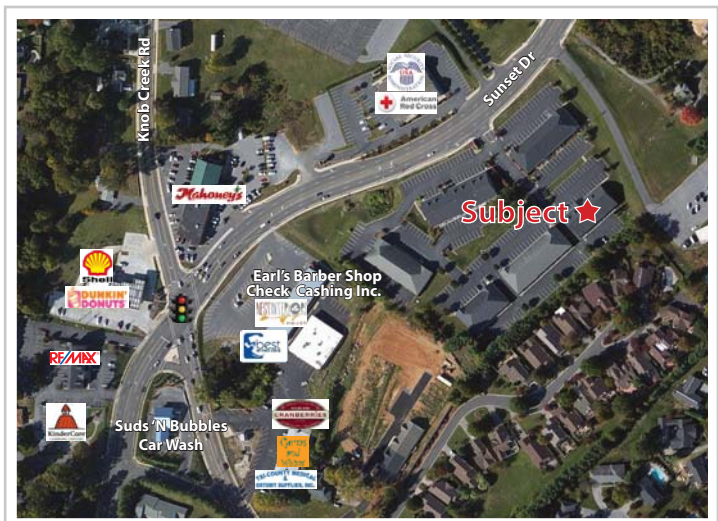
(2015 Est.)	3 mile	5 mile	10 mile
Population	42,890	75,600	153,826
Median HH Income	\$38,088	\$38,350	\$41,153
Median Age	39.3	38.7	41.1

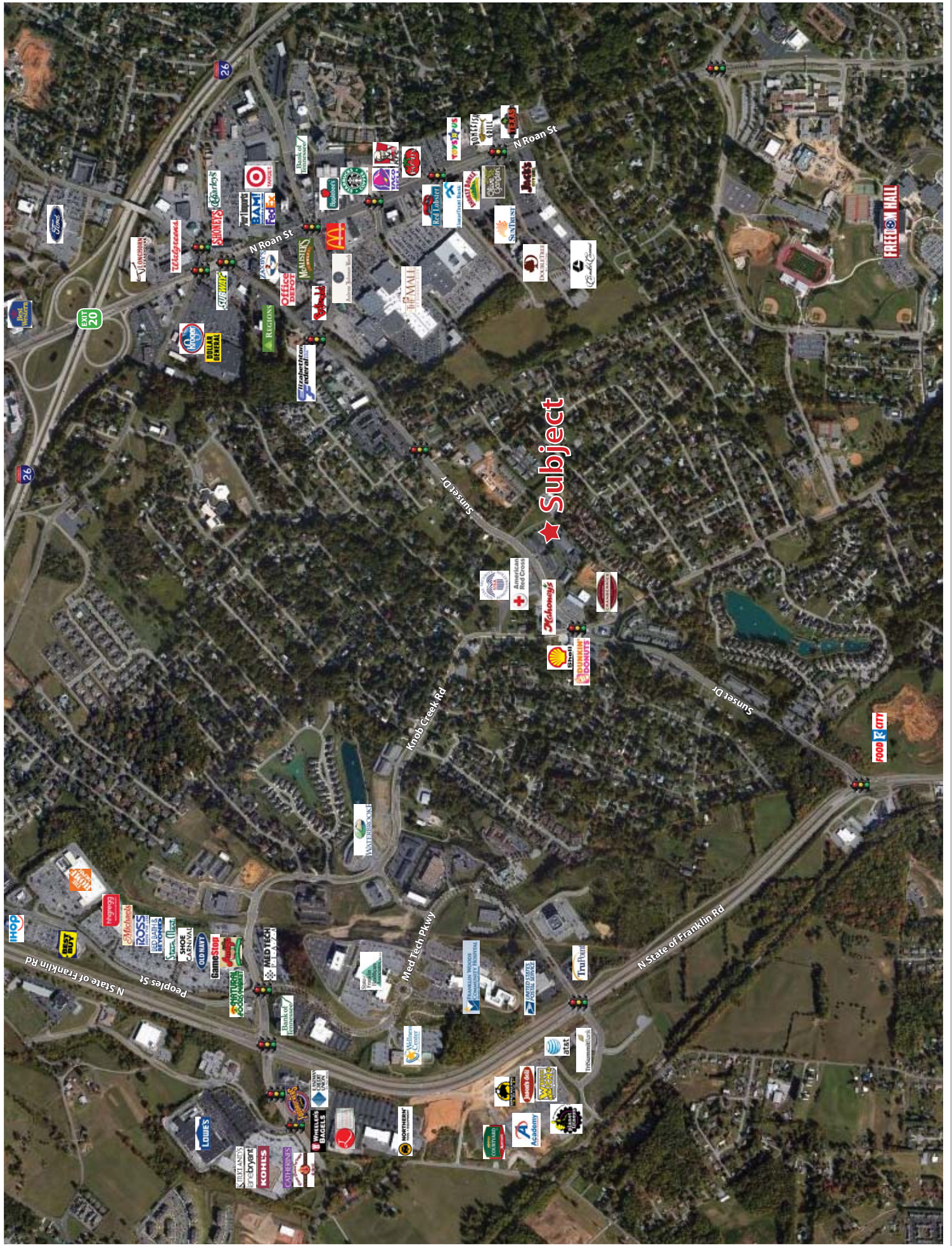
Contact

John Speropulos, CCIM, SIOR
john@mitchcox.com

Marc Murphy, CCIM
mmurphy@mitchcox.com

☎ 423-282-6582 | 📠 423-282-5903
www.mitchcox.com





★ Subject

I-26

EXIT 20

I-26

N Roan St

N Roan St

Sunset Dr

Knob Creek Rd

Sunset Dr

N State of Franklin Rd

Med Tech Pkwy

N State of Franklin Rd

Peoples St

LOUIS VIXEN

COFFEE

COFFEE

WALLACE'S BAGELS

WALLACE'S BAGELS

NORTHERN

WALLACE'S BAGELS

WALLACE'S BAGELS

WALLACE'S BAGELS

WALLACE'S BAGELS

WALLACE'S BAGELS

WALLACE'S BAGELS

WALLACE'S BAGELS

WALLACE'S BAGELS

WALLACE'S BAGELS

WALLACE'S BAGELS

WALLACE'S BAGELS

WALLACE'S BAGELS

ROSS

ROSS

ROSS

ROSS

ROSS

ROSS

ROSS

ROSS

ROSS

ROSS

ROSS

ROSS

ROSS

ROSS

ROSS

ROSS

ROSS

ROSS

ROSS

ROSS

ROSS

ROSS

ROSS

ROSS

ROSS

ROSS

ROSS

ROSS

ROSS

ROSS

ROSS

ROSS

ROSS

ROSS

ROSS

ROSS

ROSS

ROSS

ROSS

ROSS

ROSS

ROSS

ROSS

ROSS

ROSS

ROSS

ROSS

ROSS

ROSS

ROSS

ROSS

ROSS

ROSS

ROSS

ROSS

ROSS

ROSS

ROSS

ROSS

ROSS

ROSS

ROSS

ROSS

ROSS

ROSS

ROSS

ROSS

ROSS

ROSS

ROSS

ROSS

ROSS

ROSS

ROSS

ROSS

ROSS

ROSS

ROSS

ROSS

ROSS

ROSS

ROSS

ROSS

ROSS

ROSS

ROSS

ROSS

ROSS

ROSS

ROSS

ROSS

ROSS

ROSS

ROSS

ROSS

ROSS

ROSS

ROSS

ROSS

ROSS

ROSS

ROSS

ROSS

ROSS

ROSS

ROSS

ROSS

ROSS

ROSS

ROSS

ROSS

ROSS

ROSS

ROSS

ROSS

ROSS

ROSS

ROSS

ROSS

ROSS

ROSS

ROSS

ROSS

ROSS

ROSS

ROSS

ROSS

ROSS

ROSS

ROSS

ROSS

ROSS

ROSS

ROSS

ROSS

ROSS

ROSS

ROSS

ROSS

ROSS

ROSS

ROSS

ROSS

ROSS

ROSS

ROSS

ROSS

ROSS

ROSS

ROSS

ROSS

ROSS

ROSS

ROSS

ROSS

ROSS

ROSS

ROSS

ROSS

ROSS

ROSS

ROSS

ROSS

ROSS

ROSS

ROSS

ROSS

ROSS

ROSS

ROSS

ROSS

ROSS

ROSS

ROSS

ROSS

ROSS

ROSS

ROSS

ROSS

ROSS

ROSS

ROSS

ROSS

ROSS

ROSS

ROSS

ROSS

ROSS

ROSS

ROSS

ROSS

ROSS

ROSS

ROSS

ROSS

ROSS

ROSS

ROSS

ROSS

ROSS

ROSS

ROSS

ROSS

ROSS

ROSS

ROSS

ROSS

ROSS

ROSS

ROSS

ROSS

ROSS

ROSS

ROSS

ROSS

ROSS

ROSS

ROSS

ROSS

ROSS

ROSS

ROSS

ROSS

ROSS

ROSS

ROSS

ROSS

ROSS

ROSS

ROSS

ROSS

ROSS

ROSS

ROSS

ROSS

ROSS

ROSS

ROSS

ROSS

ROSS

ROSS

ROSS

ROSS

ROSS

ROSS

ROSS

ROSS

ROSS

ROSS

ROSS

ROSS

ROSS

ROSS

ROSS

ROSS

ROSS

ROSS

ROSS

ROSS

ROSS

ROSS

ROSS

ROSS

ROSS

ROSS

ROSS

ROSS

ROSS

ROSS

ROSS

ROSS

ROSS

ROSS

ROSS

ROSS

ROSS

ROSS

ROSS

ROSS

ROSS

ROSS

ROSS

ROSS

ROSS

ROSS

ROSS

ROSS

ROSS

ROSS

ROSS

ROSS

ROSS

ROSS

ROSS

ROSS

ROSS

ROSS

ROSS

ROSS

ROSS

ROSS

ROSS

ROSS

ROSS

ROSS

ROSS

ROSS

ROSS

ROSS

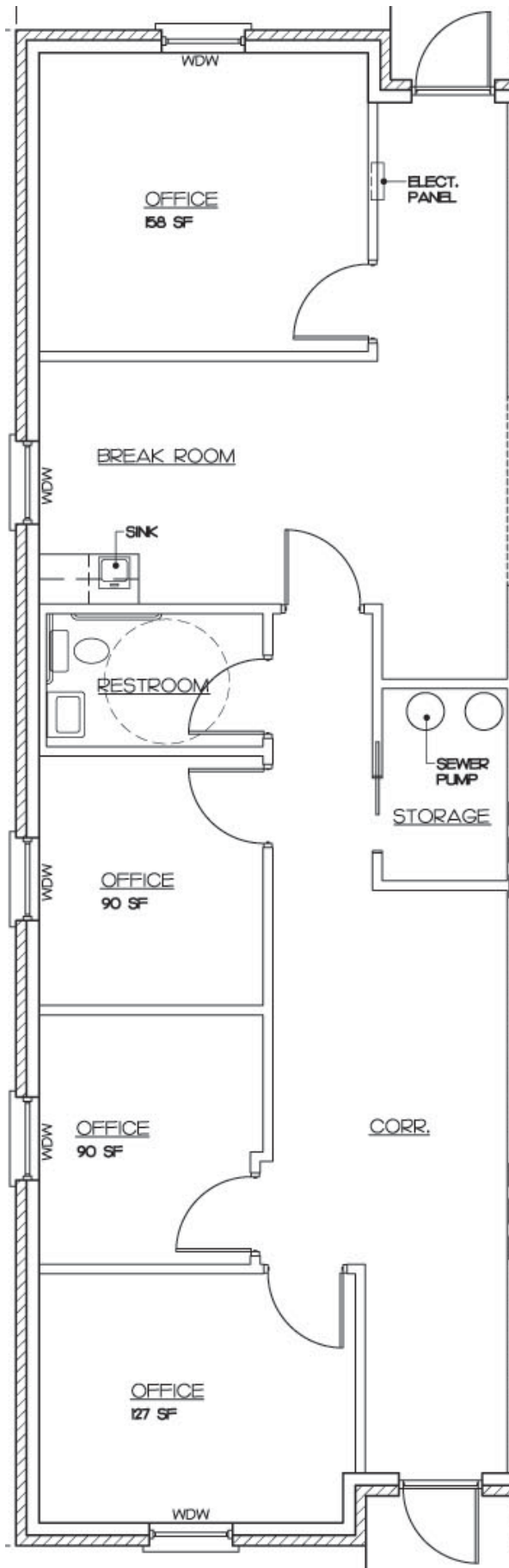
ROSS

ROSS

ROSS

ROSS

ROSS



MITCH COX
REALTOR, INC.

2304 Silverdale Drive, Suite 200, Johnson City, TN 37601
423-282-6582 (o) 423-282-5903 (f) www.mitchcox.com