

**D1 MEDICAL UNIT
TO LET**
3,316 SQ FT (307 SQ M)

KALMARS

COMMERCIAL

2 Shad Thames, SE1

020 7403 0600

www.kalmars.com



**MEDICAL UNIT, RIVER GARDEN DEVELOPMENT,
BANNING STREET, GREENWICH, SE10 0FE**

D1 MEDICAL UNIT TO LET

3,316 SQ FT (307 SQ M)



LOCATION

The River Gardens development is located a short distance along the Thames Path to the centre of Greenwich. Greenwich Market and Trafalgar Road are two nearby busy retail areas.

The immediate area surrounding the unit is residential with Maze Hill station 0.4 miles away, servicing Southeastern rail.

COSTS

Rateable Value:

The business rates are yet to be assessed.

Service Charge:

The service charge is £1.50 per square foot.

Legal Costs:

Both sides will be responsible for paying their own legal costs.

VAT

VAT is applicable on the property.

DESCRIPTION

Falling within the D1 usage property class, it measures 3,316 sq ft and is located on the ground floor.

The property comes in shell and core condition with capped services.

Overlooking Banning Street, the unit benefits from floor to ceiling windows stretching across most of the 10m frontage.

RENT

£45,000 per annum.

SIZE

The property measures 3,361sq ft in total.

VIEWING

By appointment through sole agents.

CONTACT

KALMARs COMMERCIAL

Agent: Gregory Giessen

Phone Number: 0207 403 0600

Email: gregg@Kalmars.com

MEDICAL UNIT, RIVER GARDEN DEVELOPMENT, BANNING STREET, GREENWICH, SE10 0FE

D1 MEDICAL UNIT TO LET

3,316 SQ FT (307 SQ M)

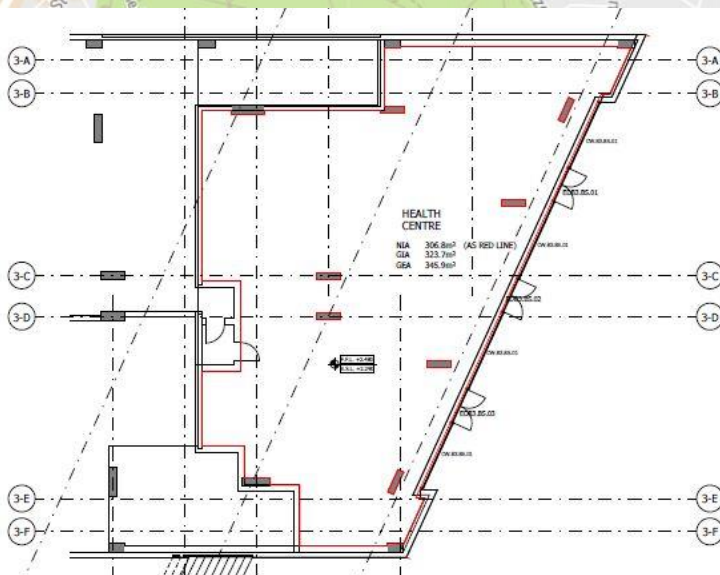
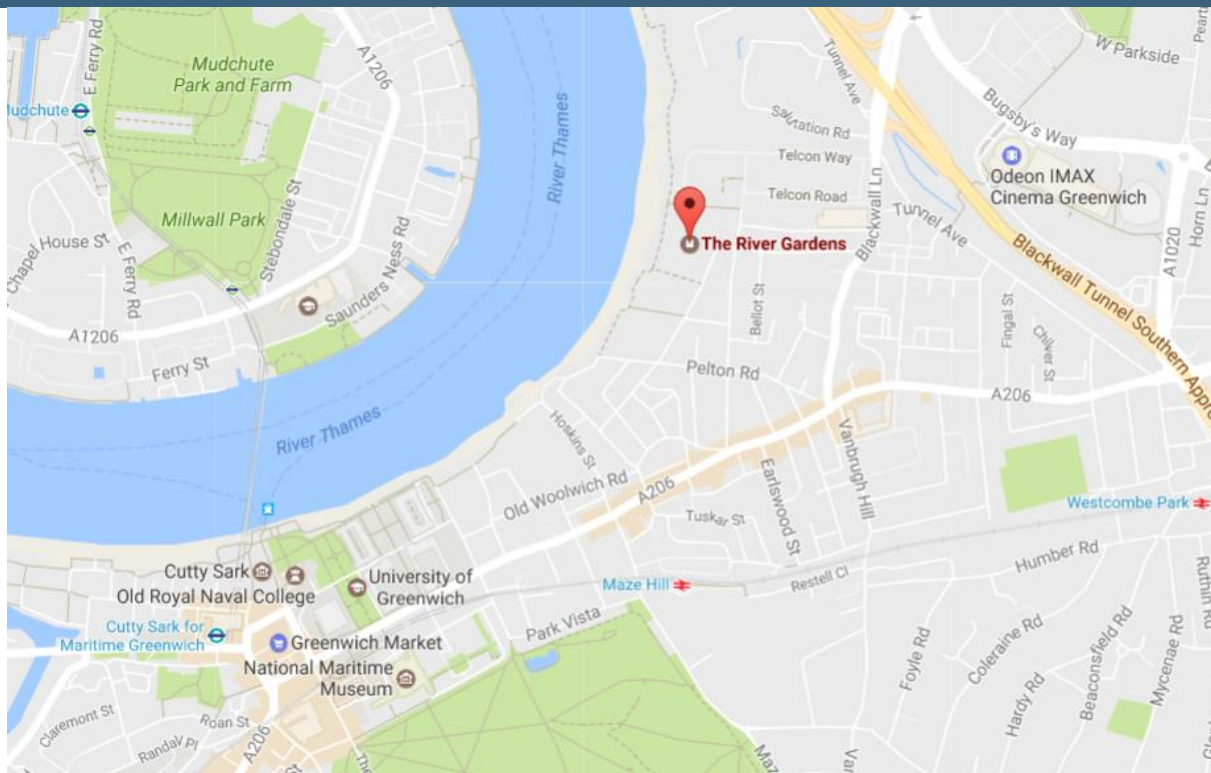
KALMARS

COMMERCIAL

2 Shad Thames, SE1

020 7403 0600

www.kalmars.com



MEDICAL UNIT, RIVER GARDEN DEVELOPMENT, BANNING STREET, GREENWICH, SE10 0FE

All properties are offered subject to contract and availability. These particulars are believed to be correct when published, but we cannot accept any liability whatsoever for any misrepresentation made either in these particulars or orally. Intending purchasers or tenants are strongly advised to make their own enquiries to check these particulars to satisfy themselves that the property is suitable for their purchase. They may be subject to VAT.