

# Carmel Professional Plaza

3210 S Gilbert Rd – Bldg 4, Suite 1

Chandler, AZ 85286

## Available For Sublease

- Class A Office Suite
- \$25 MG
- ± 1,451 SF
- Parking Ratio  
6.6/1000



Nicholas Skogen  
Commercial Agent  
602-750-6986  
NicholasSkogen@gmail.com

Aaron Dutcher  
Commercial Director  
480-797-8369  
aaron@dutchercc.com

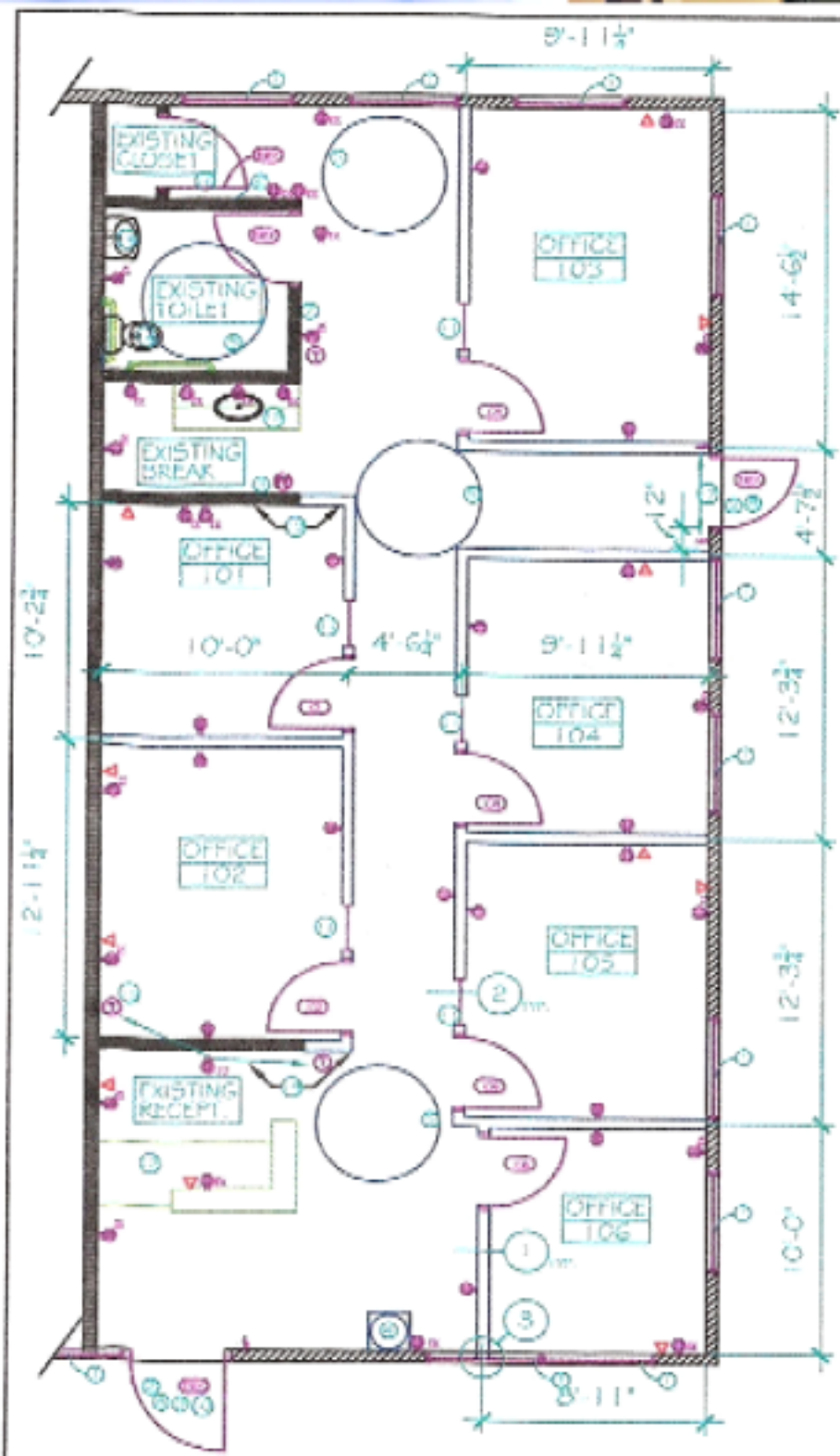


# Floor Plan

3210 S Gilbert – BLDG 4 Suite 1

Chandler, AZ 85286

- 1,451 SF
- 2 Entry Doors
- \$25 MG
- Restroom
- 6 Offices
- Break Room
- Built Out Reception



Nicholas Skogen  
Commercial Agent  
602-750-6986  
NicholasSkogen@gmail.com

Aaron Dutcher  
Commercial Director  
480-797-8369  
aaron@dutchercc.com

# Carmel Professional Plaza

## Sublease

3210 S Gilbert Rd  
Bldg 4 – Suite 1  
Chandler, AZ

- \$25 MG
- ± 1,451 SF
- Cross Streets:  
Queen Creek/Gilbert
- 1.5 Miles South of AZ-202



3210 S  
Gilbert Rd

Nicholas Skogen  
Commercial Agent  
602-750-6986  
NicholasSkogen@gmail.com

Aaron Dutcher  
Commercial Director  
480-797-8369  
aaron@dutchercc.com

**BUSINESS  
NETWORK**



## Available Sublease Carmel Business Plaza

3210 S Gilbert – BLDG 4 Suite 1  
Chandler, AZ 85286

Aaron Dutcher  
Commercial Director  
480-797-8369  
aaron@dutchercc.com

Nicholas Skogen  
Commercial Agent  
602-750-6986  
NicholasSkogen@gmail.com

