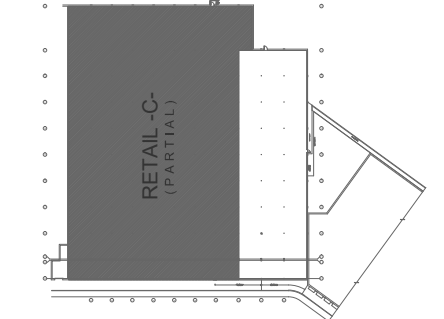




**TAYLOR ASSOCIATES ARCHITECTS**

572 NORTH BROADWAY  
WHITE PLAINS, NEW YORK 10603

TEL 914 289 0011  
FAX 914 289 0022



**KEY PLAN**

**LEGEND**

☐ DENOTES DRAWING NOTE (SEE THIS DRAWING)

▬▬▬ TENANT LEASE OUTLINE

---

**EXISTING LIMITED CONDITIONS**

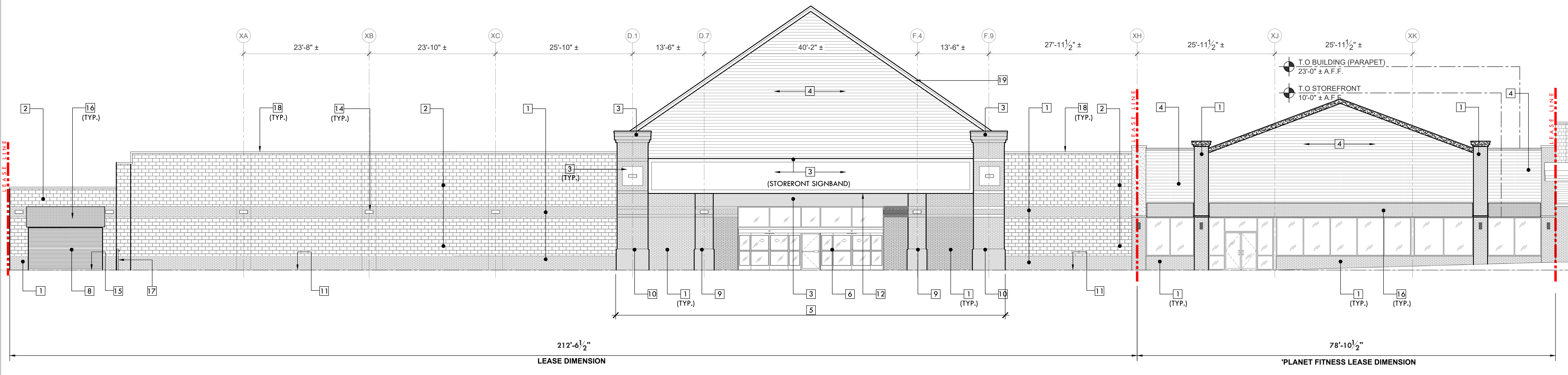
UNDERSIDE SIDE OF MTL. ROOF DECK @ +18'-8" ± A.F.F.  
UNDERSIDE SIDE OF OPEN WEB JOIST (RUNNING FRONT TO BACK) @ +16'-11" A.F.F.

LEVEL WHITE T.P.O ROOFING, IN FAIR CONDITION. BLISTERING NOTED IN A FEW PLACES.

4'-5" H. X 8" WIDE MASONRY PARAPET WITH BRICK VENEER AT STOREFRONT.

1'-5" PARAPET (FROM MAIN ROOF LEVEL) AT REAR OF BUILDING

*EXISTING ROOFTOP HVAC UNITS AND ADDITIONAL ROOF CONDITIONS TO BE SURVEYED AND VERIFIED IN FIELD.*



**STOREFRONT ELEVATION**

SCALE: 1/8" = 1'-0"



**KEY PLAN NOTES**

1	RED BRICK FINISH
2	STONE BLOCK FINISH
3	EIFS FINISH
4	VINYL SIDING
5	CONCRETE SIDEWALK SLOPES DOWN TO MEET ASPHALT FOR FLUSH CONDITION ACROSS ENTRY CANOPY AREA
6	EXTERIOR ANODIZED ALUMINUM AND GLASS VESTIBULE WITH 12'-0"± WIDE AUTOMATIC DOOR PACKAGE & EGRESS DOOR
7	EXTERIOR WALL SCUNCES
8	ROLL-UP DOOR AT STOREFRONT FOR 'OPEN-AIR' ELEVATOR LOBBY
9	3'-4" X 3'-4" STOREFRONT PILASTER WITH CONCRETE BASE UP TO +4'-2" WITH BRICK FINISH ABOVE. (TYP. OF 2)
10	3'-4" X 6'-0" STOREFRONT PILASTER WITH CONCRETE BASE UP TO +4'-2" WITH BRICK FINISH ABOVE. (TYP. OF 2)
11	11'-0" WIDE LEVEL CONCRETE SIDEWALK AT STOREFRONT
12	BOTTOM OF CANOPY E.I.F.S SIGN BAND @ +14'-5" AFF
13	NOT USED
14	EXTERIOR WALL LIGHT SCUNCE
15	13'-4"± WIDE CURB CUT
16	FABRIC AWNING ABOVE ROLL-UP DOOR
17	STAND-PIPE WITH VALVE @ +4'-0" H.
18	ALUMINUM COPING AT PARAPET
19	WOOD TRIM @ GABLE ROOF

**DATE OF SURVEY**  
06.09.20

REVISIONS:

PROJECT NO. 10629  
DATE: 06.12.20  
DRAWN BY: FTA

SCALE: AS NOTED

SHEET TITLE:  
**STOREFRONT ELEVATION**

**BIG 'V' TOWN CENTER**  
RETAIL BUILDING 'C'  
374 WINDSOR HWY (R 32)  
VAILSGATE, NY

SHEET NO:

**LOD-200.00**