



RETAIL FOR LEASE

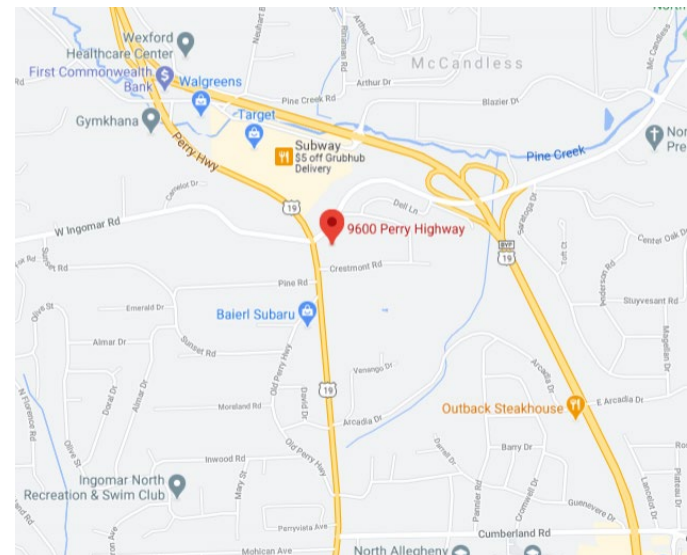
9600 PERRY HWY.

PITTSBURGH, PA 15237



## RETAIL SPACE FEATURES

- Up to 600 RSF - available immediately
- Available term: 1 to 5 years
- Located in a busy retail plaza
- Directly off of McKnight Road's retail corridor
- Great traffic counts of over 12,000 cars daily
- Join other tenants: Bob's Sub, Bruster's Ice Cream, & Soccer Source



### ROBERT GEIGER

(412) 391 2610

rob.geiger@cushwake.com

Lic. # RS128952A

### CUSHMAN & WAKEFIELD

310 Grant Street, Suite 1825, Pittsburgh, PA

412 391 2600

[cushmanwakefield.com](http://cushmanwakefield.com)

©2022 Cushman & Wakefield. All rights reserved. The information contained in this communication is strictly confidential. This information has been obtained from sources believed to be reliable but has not been verified. NO WARRANTY OR REPRESENTATION, EXPRESS OR IMPLIED, IS MADE AS TO THE CONDITION OF THE PROPERTY (OR PROPERTIES) REFERENCED HEREIN OR AS TO THE ACCURACY OR COMPLETENESS OF THE INFORMATION CONTAINED HEREIN, AND SAME IS SUBMITTED SUBJECT TO ERRORS, OMISSIONS, CHANGE OF PRICE, RENTAL OR OTHER CONDITIONS, WITHDRAWAL WITHOUT NOTICE, AND TO ANY SPECIAL LISTING CONDITIONS IMPOSED BY THE PROPERTY OWNER(S). ANY PROJECTIONS, OPINIONS OR ESTIMATES ARE SUBJECT TO UNCERTAINTY AND DO NOT SIGNIFY CURRENT OR FUTURE PROPERTY PERFORMANCE.



**CUSHMAN &  
WAKEFIELD**

**RETAIL FOR LEASE**

**9600 PERRY HWY.**

**PITTSBURGH, PA 15237**



**ROBERT GEIGER**

(412) 391 2610

rob.geiger@cushwake.com

Lic. # RS128952A

**CUSHMAN & WAKEFIELD**

310 Grant Street, Suite 1825, Pittsburgh, PA

412 391 2600

**cushmanwakefield.com**

©2022 Cushman & Wakefield. All rights reserved. The information contained in this communication is strictly confidential. This information has been obtained from sources believed to be reliable but has not been verified. NO WARRANTY OR REPRESENTATION, EXPRESS OR IMPLIED, IS MADE AS TO THE CONDITION OF THE PROPERTY (OR PROPERTIES) REFERENCED HEREIN OR AS TO THE ACCURACY OR COMPLETENESS OF THE INFORMATION CONTAINED HEREIN, AND SAME IS SUBMITTED SUBJECT TO ERRORS, OMISSIONS, CHANGE OF PRICE, RENTAL OR OTHER CONDITIONS, WITHDRAWAL WITHOUT NOTICE, AND TO ANY SPECIAL LISTING CONDITIONS IMPOSED BY THE PROPERTY OWNER(S). ANY PROJECTIONS, OPINIONS OR ESTIMATES ARE SUBJECT TO UNCERTAINTY AND DO NOT SIGNIFY CURRENT OR FUTURE PROPERTY PERFORMANCE.

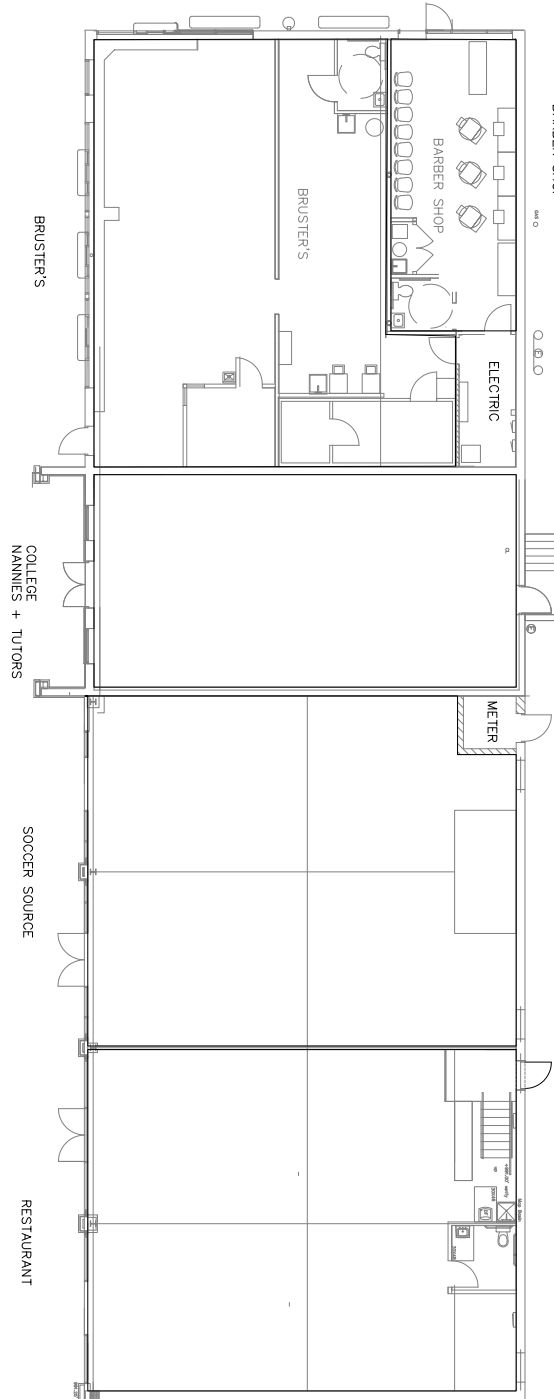


**CUSHMAN &  
WAKEFIELD**

**RETAIL FOR LEASE**

**9600 PERRY HWY.**

**PITTSBURGH, PA 15237**



**ROBERT GEIGER**

(412) 391 2610

rob.geiger@cushwake.com

Lic. # RS128952A

**CUSHMAN & WAKEFIELD**

310 Grant Street, Suite 1825, Pittsburgh, PA

412 391 2600

**cushmanwakefield.com**

©2022 Cushman & Wakefield. All rights reserved. The information contained in this communication is strictly confidential. This information has been obtained from sources believed to be reliable but has not been verified. NO WARRANTY OR REPRESENTATION, EXPRESS OR IMPLIED, IS MADE AS TO THE CONDITION OF THE PROPERTY (OR PROPERTIES) REFERENCED HEREIN OR AS TO THE ACCURACY OR COMPLETENESS OF THE INFORMATION CONTAINED HEREIN, AND SAME IS SUBMITTED SUBJECT TO ERRORS, OMISSIONS, CHANGE OF PRICE, RENTAL OR OTHER CONDITIONS, WITHDRAWAL WITHOUT NOTICE, AND TO ANY SPECIAL LISTING CONDITIONS IMPOSED BY THE PROPERTY OWNER(S). ANY PROJECTIONS, OPINIONS OR ESTIMATES ARE SUBJECT TO UNCERTAINTY AND DO NOT SIGNIFY CURRENT OR FUTURE PROPERTY PERFORMANCE.