



THE BOWERY DISTRICT

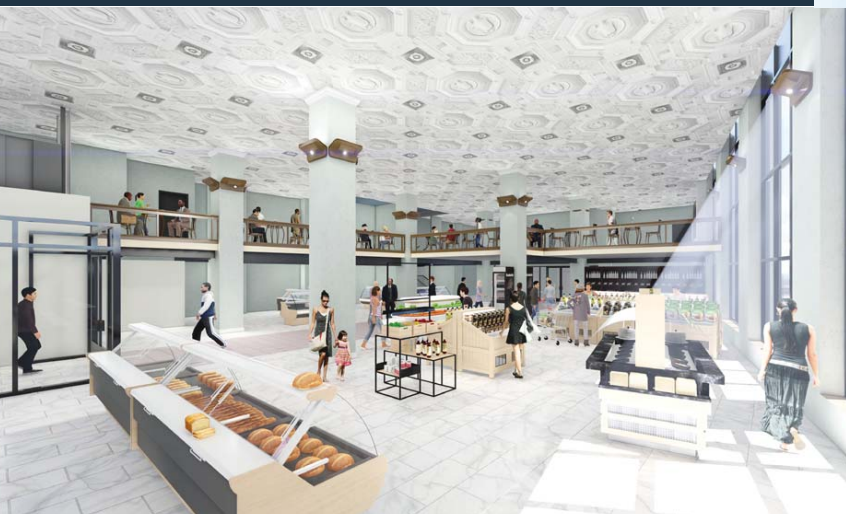
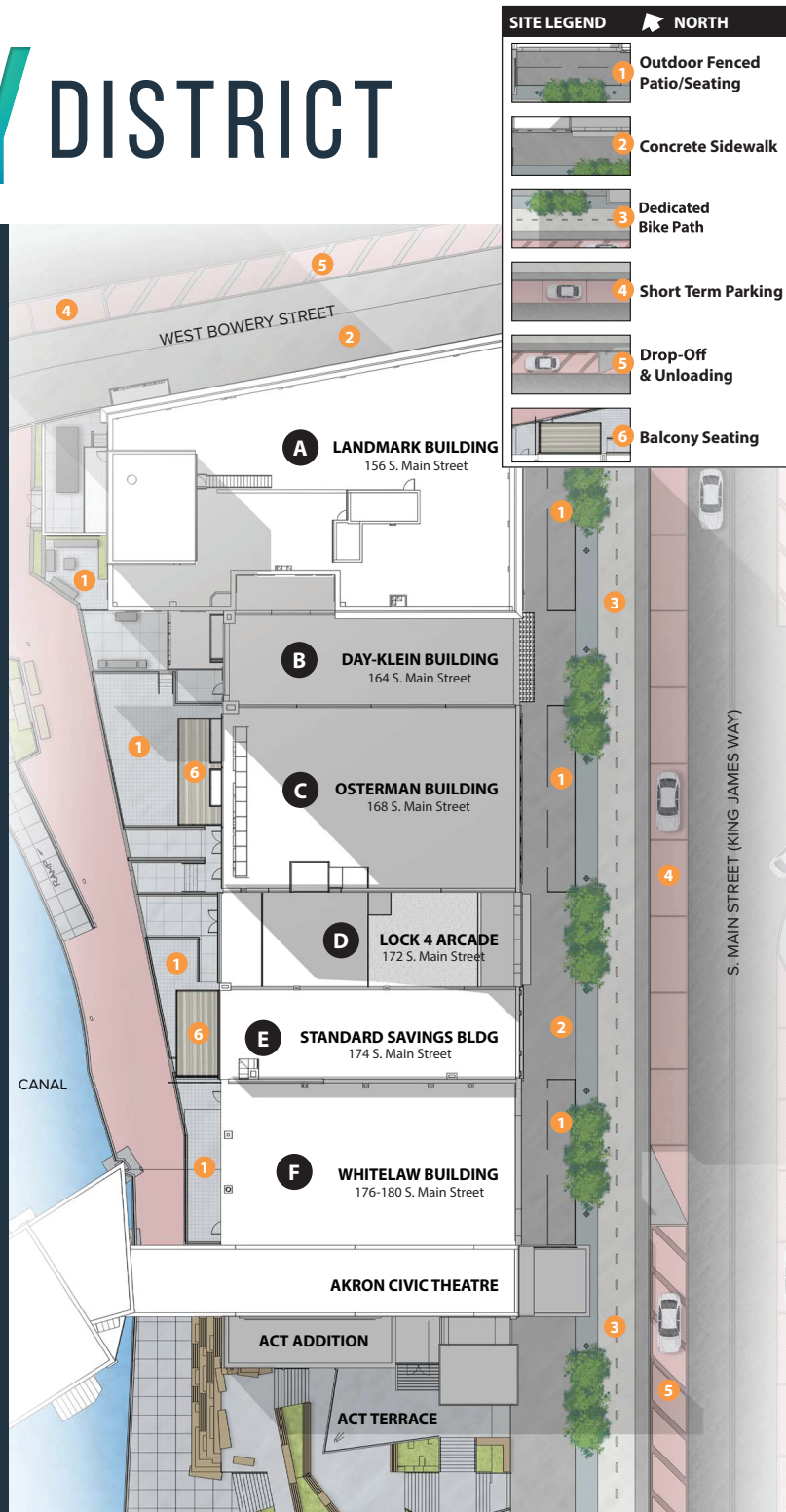
S. Main & W. Bowery | Akron, OH

CBRE



THE BOWERY DISTRICT

- The Bowery District (corner of S Main & W Bowery) is a high profile redevelopment of 6 historic downtown Akron buildings, featuring retail, office, & new residential.
- Unique retail and office suites with several outdoor patios. Access to Main Street and the Lock 4 on the Canal.
- 92 high-end residential units with multiple amenities.
- Easy access to 2,031 parking spaces located in the adjoining Cascade parking deck
- Within minutes to Route 8/I-77/I-76 highways
- Located within the entertainment district of downtown Akron
- Less than half a mile to the Ohio & Erie Canal Towpath Trail with great accessibility to the Cuyahoga Valley National Park
- Close proximity to numerous entertainment venues:
 - Civic Theater – Total capacity of 2,592 seats
 - Akron Rubber Ducks – Approximately 4,900 people per game
 - Lock 3 and 4 – multiple festivals and outdoor activities planned throughout the year drawing in large crowds
 - Additional venues: Akron Art Museum, John S Knight Center, Akron Zoo, University of Akron and Stark State Community College.
- Day time population:
 - 1/4 mile: 11,458 employees
 - 1/2 mile: 25,978 employees
- Seeking grocery store component, office, and retail tenants to complement the growing residential and daytime population!



AVAILABLE SPACE

A - AKRON SAVINGS & LOAN BUILDING

156 S. MAIN STREET, AKRON, OH

| | |
|-----------|----------|
| Mezzanine | 3,092 SF |
| Main | 5,461 SF |

B - DAY-KLEIN BUILDING

164 S. MAIN STREET, AKRON, OH

| | |
|---------|----------|
| Canal 1 | 649 SF |
| Canal 2 | 1,571 SF |
| Main | 1,432 SF |

C - OSTERMAN BUILDING

168 S. MAIN STREET, AKRON, OH

| | |
|---------|----------|
| Canal 1 | 1,524 SF |
| Canal 2 | 3,111 SF |
| Main | 3,234 SF |

E - STANDARD SAVINGS BUILDING

174 S. MAIN STREET, AKRON, OH

| | |
|---------|----------|
| Canal 1 | 277 SF |
| Canal 2 | 1,482 SF |
| Main | 1,443 SF |
| Level 2 | 1,458 SF |





60,000
PERSON AVERAGE
DAYTIME POPULATION
(in a 1 mile radius)

24,600
UNIVERSITY OF
AKRON STUDENTS

5,000
UNIVERSITY OF AKRON
FACULTY AND STAFF

11,000
CLOSE-IN RESIDENTS

530,000
METROPOLITAN
SHOPPERS AND DINERS

2 million
TOWPATH USERS

500,000
VISIT LOCK 3, LOCK 4,
AND THE AKRON
CIVIC THEATRE ANNUALLY

8,000
PEDESTRIANS WITHIN A 5
MINUTE WALK MEDICAL
FACILITIES EMPLOY OVER 10,000

- 1 THE BOWERY BLOCK
- 2 AKRON CIVIC THEATRE
- 3 LOCK 3 & 4 CANAL WALKWAYS
- 4 AKRON CHILDREN'S HOSPITAL
- 5 CLEVELAND CLINIC/AKRON GENERAL
- 6 RONALD MCDONALD HOUSE OF AKRON
- 7 CANAL PARK
- 8 JOHN S KNIGHT CENTER
- 9 EJ. THOMAS PERFORMING ARTS HALL
- 10 AKRON ART MUSEUM
- 11 AKRON MUNICIPAL COURT
- 12 AKRON SUMMIT COUNTY PUBLIC LIBRARY
- 13 UNIVERSITY OF AKRON
- 14 PNC BANK
- 15 FIRSTENERGY CORPORATION
- 16 HUNTINGTON NATIONAL BANK
- 17 GOJO INDUSTRIES INC
- 18 CASCADE PARKING DECK | 2031 SPACES
- 19 SUMMIT COUNTY DECK | 1140 SPACES
- 20 CITICENTER PARKING DECK | 236 SPACES
- 21 STATE STREET DECK | 559 SPACES

ZADA LINES
+1 330 670 4418
zada.lines@cbre.com

JOSEPH KHOURI
+1 216 658 6120
joseph.khour@cbre.com

KEVIN MOSS
+1 216 363 6453
kevin.moss@cbre.com

CBRE

© 2019 CBRE, Inc. All rights reserved. This information has been obtained from sources believed reliable, but has not been verified for accuracy or completeness. Any projections, opinions, or estimates are subject to uncertainty. The information may not represent the current or future performance of the property. You and your advisors should conduct a careful, independent investigation of the property and verify all information. Any reliance on this information is solely at your own risk. CBRE and the CBRE logo are service marks of CBRE, Inc. and/or its affiliated or related companies in the United States and other countries. All other marks displayed on this document are the property of their respective owners. Photos herein are the property of their respective owners and use of these images without the express written consent of the owner is prohibited. PMStudio_May2019

*Renderings by LDA Architects