



Video:

## PROPERTY FEATURES

- 4,000 SF, 2-story restaurant space with 1,200 SF third floor storage and office
- Will be delivered "Turn-Key" with all fixtures, furniture, and equipment (FF&E's) to remain
- All FF&E's are close to brand new (Less than 2 years old)
- Includes 3-way liquor license
- Located in the heart of Downtown Lafayette's vibrant restaurant and bar scene
- 2 Blocks from pedestrian bridge leading to Wabash Landing Entertainment District and 0.8 mile from Purdue University
- Please sign and return confidentiality agreement to receive more detailed information

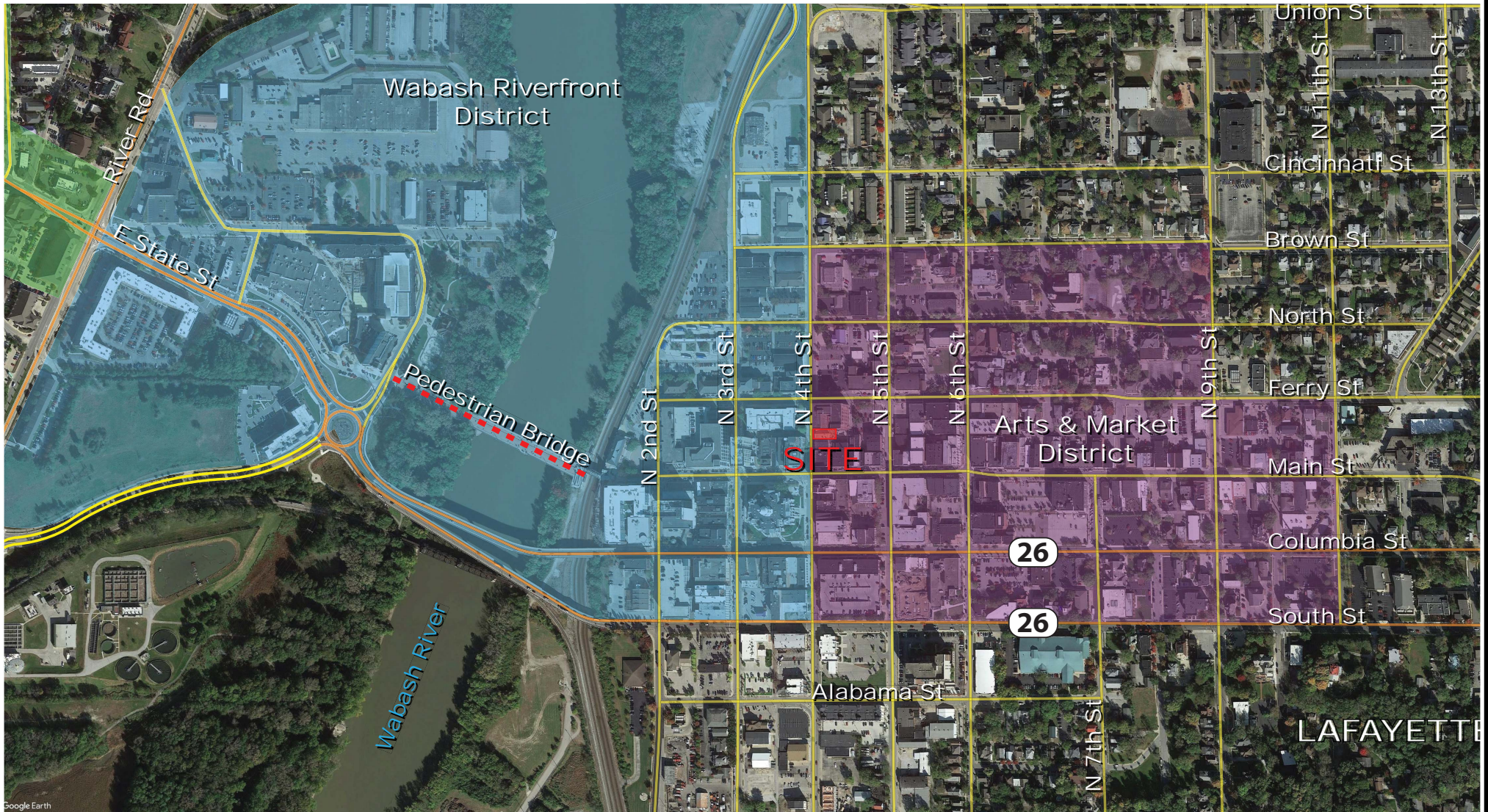


**David Simons** [simons@velocitycre.com](mailto:simons@velocitycre.com)

11722 Allisonville Road, Suite 103-318 | FISHERS, IN 46038 | PH: 317.942.1141 | [www.velocitycre.com](http://www.velocitycre.com)

The information contained herein was obtained from sources we consider reliable. We cannot be responsible, however, for errors, omissions, prior sale, withdrawal from the market or change in price. Seller and broker make no representation as to the environmental condition of the property and recommend purchaser's independent investigation.





**David Simons** [simons@velocitycre.com](mailto:simons@velocitycre.com)

11722 Allisonville Road, Suite 103-318 | FISHERS, IN 46038 | PH: 317.942.1141 | [www.velocitycre.com](http://www.velocitycre.com)

The information contained herein was obtained from sources we consider reliable. We cannot be responsible, however, for errors, omissions, prior sale, withdrawal from the market or change in price. Seller and broker make no representation as to the environmental condition of the property and recommend purchaser's independent investigation.





**David Simons** [simons@velocitycre.com](mailto:simons@velocitycre.com)

11722 Allisonville Road, Suite 103-318 | FISHERS, IN 46038 | PH: 317.942.1141 | [www.velocitycre.com](http://www.velocitycre.com)

The information contained herein was obtained from sources we consider reliable. We cannot be responsible, however, for errors, omissions, prior sale, withdrawal from the market or change in price. Seller and broker make no representation as to the environmental condition of the property and recommend purchaser's independent investigation.





1st Floor Bar



2nd Floor Bar



Host Stand



1st Floor Dining & Patio Entrance



1st Floor Entrance & Stairs to 2nd Floor



2nd Floor Dining



**David Simons** [simons@velocitycre.com](mailto:simons@velocitycre.com)

11722 Allisonville Road, Suite 103-318 | FISHERS, IN 46038 | PH: 317.942.1141 | [www.velocitycre.com](http://www.velocitycre.com)

The information contained herein was obtained from sources we consider reliable. We cannot be responsible, however, for errors, omissions, prior sale, withdrawal from the market or change in price. Seller and broker make no representation as to the environmental condition of the property and recommend purchaser's independent investigation.





1st Floor Patio



2nd Floor Patio



Kitchen



Kitchen



Kitchen



Kitchen



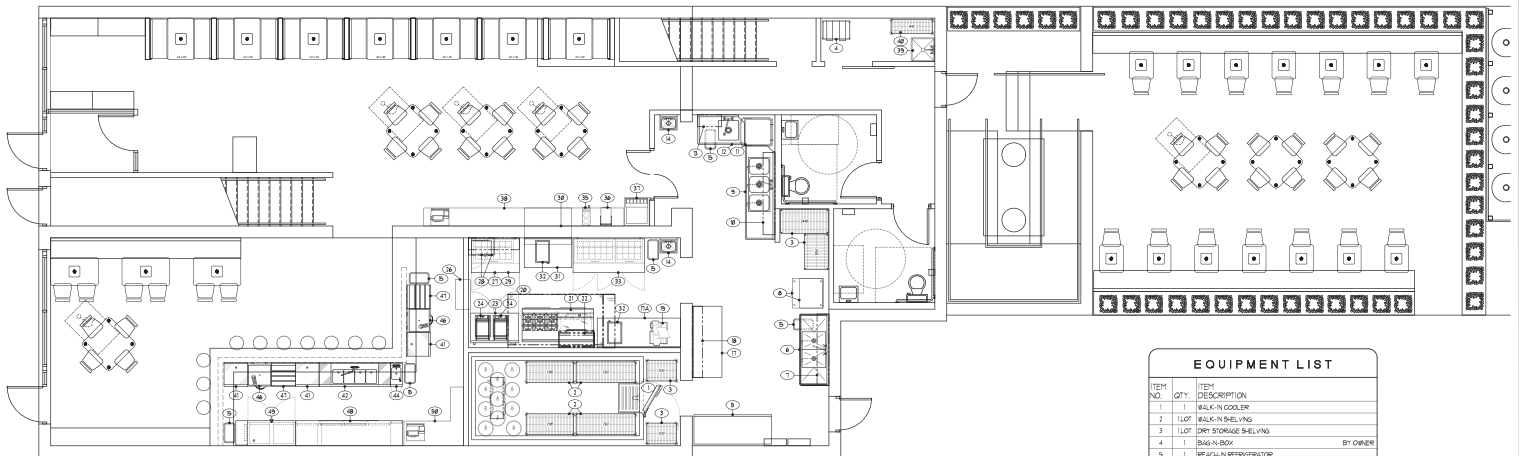
**David Simons** [simons@velocitycre.com](mailto:simons@velocitycre.com)

11722 Allisonville Road, Suite 103-318 | FISHERS, IN 46038 | PH: 317.942.1141 | [www.velocitycre.com](http://www.velocitycre.com)

The information contained herein was obtained from sources we consider reliable. We cannot be responsible, however, for errors, omissions, prior sale, withdrawal from the market or change in price. Seller and broker make no representation as to the environmental condition of the property and recommend purchaser's independent investigation.



## Existing Floor Plan



EQUIPMENT LIST		
ITEM NO	QTY	DESCRIPTION
1	1	WALK-IN COOLER
2	1	WALK-IN FREEZER
3	1	DRY STORAGE SHELVING
4	1	BAG-IN-BOX
5	1	REACH-IN REFRIGERATOR
6	1	TWO COMPARTMENT SINK
7	1	SS WALL SHELF
8	1	ICE MACHINE w/ BIN AND FILTER
9	1	CLEAN DISHWASH w/ POTWASH
10	1	SS WALL SHELF
11	1	DISHWASHER
12	1	BOILED DISHWASH w/ SINK
13	1	SS SLANT RACK SHELF
14	2	HAND SINK
15	1	TRASH CAN - 30L
16	1	OPEN NUMBER
17	1	SS WORKTABLE, 17" w/ UNDER-SHELF
17A	1	SS WORKTABLE, 18" w/ UNDER-SHELF
18	1	SS WALL SHELF
19	1	SLICER
20	1	EXHAUST HOOD SYSTEM w/ FIRE SUPPRESSION
21	1	30" BURNER RANGE w/ GRIDDLE
22	1	BALANCE - WALL MTD
23	1	REFRIGERATED WORKTOP
24	2	SANDWICH PASTA GRILL
25	1	OPEN NUMBER
26	1	PASS THRU WINDOW - BAR AREA
27	1	MEGA TOP SANDWICH SALAD PREP-REFRIGERATOR
28	1	MICROWAVE OVEN w/ WALL SHELF
29	1	SS WALL SHELF
30	1	PASS THRU WINDOW SHELF - DINING ROOM
31	1	SS WORKTABLE w/ UNDER-SHELF
32	2	HOT FOOD WELL - COUNTERTOP
33	1	MEGA TOP SANDWICH SALAD PREP-REFRIGERATOR
34	1	OPEN NUMBER
35	1	COFFEE BREWER
36	1	TEA BREWER
37	1	SOUL DISPENSER
38	1	BEVERAGE TABLE
39	1	PUMP/SINK w/ SERVICE FAUCET
40	1	CHEMICAL STORAGE SHELVING
41	4	UNDERBAR DRINKWARE
42	1	UNDERBAR FOUR COMPARTMENT SINK
43	1	OPEN NUMBER
44	2	UNDERBAR SINK
45	1	UNDERBAR COOLER
46	3	UNDERBAR ICE BIN
47	3	UNDERBAR LIQUOR DISPLAY
48	1	BACK BAR COOLER
49	1	WINE COOLER - COOL ZONE
50	1	BACKBAR CABINET w/ DRINKWARE FOR TAPS
51	1	UNDERCOUNTER DISHWASHER

EQUIPMENT PLAN  
SCALE 1/8" = 1'-0"



**David Simons** [simons@velocitycre.com](mailto:simons@velocitycre.com)

11722 Allisonville Road, Suite 103-318 | FISHERS, IN 46038 | PH: 317.942.1141 | [www.velocitycre.com](http://www.velocitycre.com)

The information contained herein was obtained from sources we consider reliable. We cannot be responsible, however, for errors, omissions, prior sale, withdrawal from the market or change in price. Seller and broker make no representation as to the environmental condition of the property and recommend purchaser's independent investigation.