



OFFICE BUILDING FOR LEASE

FULLY UPDATED | FURNISHED OFFICE BUILDING | 1855 S NATIONAL AVE, SUITE A, SPRINGFIELD, MO 65804

- Fully updated, furnished office building
- For Lease at \$14.00 PSF (NN); CAM estimated at \$4.35 PSF
- South National Exposure on Medical Mile
- Class-A Office
- Across from Mercy Hospital
- Available May 2023
- Shown by appointment only

EST. 1909

2225 S. Blackman Road
Springfield, MO 65809
417.881.0600
rbmurray.com

Ross Murray, SIOR, CCIM
417.881.0600
ross@rbmurray.com

Ryan Murray, SIOR, CCIM, LEED AP, CPM
417.881.0600
ryan@rbmurray.com

R.B. | MURRAY COMPANY
SINCE 1909
COMMERCIAL & INDUSTRIAL REAL ESTATE

Executive Summary



PROPERTY SUMMARY

Monthly Estimated Rent:	\$2,625.00 (plus estimated CAM)
Available SF:	2,250
Lease Rate:	\$14.00 PSF (NN)
Lot Size:	0.69 Acres
Building Size:	4,320 SF
Building Class:	A
Year Built:	1995
Zoning:	PD 55
Market:	SE Springfield
Cross Streets:	Washita
CAM Charge / SF	\$4.35 PSF (estimated)

The information listed above has been obtained from sources we believe to be reliable; however, we accept no responsibility for its accuracy.

Ross Murray, SIOR, CCIM | 417.881.0600 | ross@rbmurray.com

Ryan Murray, SIOR, CCIM, LEED AP, CPM | 417.881.0600 | ryan@rbmurray.com

Robert Murray, Jr., SIOR | 417.881.0600 | bob@rbmurray.com

2225 S. Blackman Road | Springfield, MO 65809 | 417.881.0600

PROPERTY OVERVIEW

Executive level build-out, fully furnished, and totally updated with kitchen/break room, five large private offices, large conference room, 5 custom matching cubicles, temperature-controlled server room, reception area, and HID security system. This building is located directly across from Mercy Hospital's main campus. It also has three covered parking spaces included. For showings or additional information please contact listing agent.

PROPERTY HIGHLIGHTS

- Class "A" office building; partially furnished for Lease at \$14.00 PSF (NN)
- CAM estimated at \$4.35 PSF, which includes taxes, insurance and common area maintenance
- Monthly rent including CAM estimated at \$3,440.63
- Included with the space are three covered parking spaces
- Located directly across from Mercy Hospital
- Shares building with Mike Breeding State Farm Insurance Office
- Shown by appointment only

EST. 1909

OFFICE BUILDING
FOR LEASE

FULLY UPDATED | FURNISHED OFFICE BUILDING
1855 S NATIONAL AVE, SUITE A, SPRINGFIELD, MO 65804



Additional Photos



Front

©Copyright R.B. Murray Company



Covered Parking

©Copyright R.B. Murray Company



Reception

©Copyright R.B. Murray Company



Reception

©Copyright R.B. Murray Company



Private Office

©Copyright R.B. Murray Company



Conference Room

©Copyright R.B. Murray Company

Ross Murray, SIOR, CCIM | 417.881.0600 | ross@rbmurray.com
Ryan Murray, SIOR, CCIM, LEED AP, CPM | 417.881.0600 | ryan@rbmurray.com
Robert Murray, Jr., SIOR | 417.881.0600 | bob@rbmurray.com
2225 S. Blackman Road | Springfield, MO 65809 | 417.881.0600

R.B. | MURRAY COMPANY
COMMERCIAL & INDUSTRIAL REAL ESTATE

OFFICE BUILDING
FOR LEASE

FULLY UPDATED | FURNISHED OFFICE BUILDING
1855 S NATIONAL AVE, SUITE A, SPRINGFIELD, MO 65804

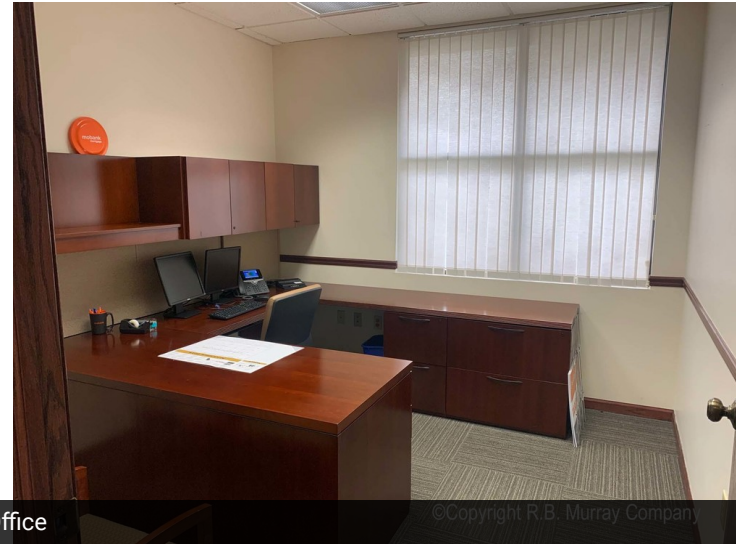
100 Years
SINCE 1909

Additional Photos



Cubicle

©Copyright R.B. Murray Company



Private Office

©Copyright R.B. Murray Company



Private Office

©Copyright R.B. Murray Company



Break Room

©Copyright R.B. Murray Company

Ross Murray, SIOR, CCIM | 417.881.0600 | ross@rbmurray.com
Ryan Murray, SIOR, CCIM, LEED AP, CPM | 417.881.0600 | ryan@rbmurray.com
Robert Murray, Jr., SIOR | 417.881.0600 | bob@rbmurray.com
2225 S. Blackman Road | Springfield, MO 65809 | 417.881.0600

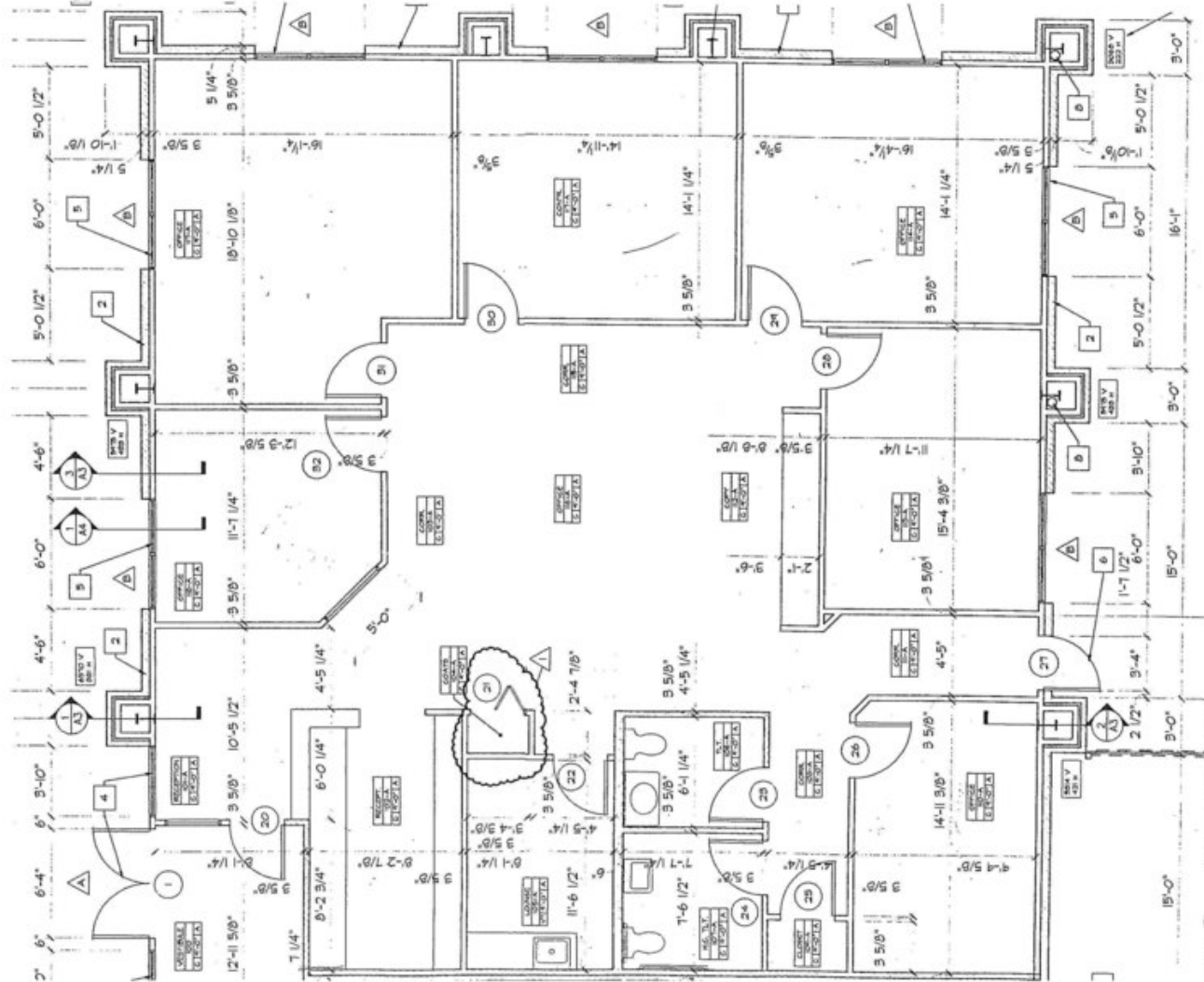
R.B. | MURRAY COMPANY
COMMERCIAL & INDUSTRIAL REAL ESTATE

OFFICE BUILDING
FOR LEASE

FULLY UPDATED | FURNISHED OFFICE BUILDING
1855 S NATIONAL AVE, SUITE A, SPRINGFIELD, MO 65804



Floor Plans



Ross Murray, SIOR, CCIM | 417.881.0600 | ross@rbmurray.com
Ryan Murray, SIOR, CCIM, LEED AP, CPM | 417.881.0600 | ryan@rbmurray.com
Robert Murray, Jr., SIOR | 417.881.0600 | bob@rbmurray.com
2225 S. Blackman Road | Springfield, MO 65809 | 417.881.0600

R.B. | MURRAY COMPANY
COMMERCIAL & INDUSTRIAL REAL ESTATE

OFFICE BUILDING
FOR LEASE

FULLY UPDATED | FURNISHED OFFICE BUILDING
1855 S NATIONAL AVE, SUITE A, SPRINGFIELD, MO 65804

100 Years
SINCE 1909

Aerial



Ross Murray, SIOR, CCIM | 417.881.0600 | ross@rbmurray.com
Ryan Murray, SIOR, CCIM, LEED AP, CPM | 417.881.0600 | ryan@rbmurray.com
Robert Murray, Jr., SIOR | 417.881.0600 | bob@rbmurray.com
2225 S. Blackman Road | Springfield, MO 65809 | 417.881.0600

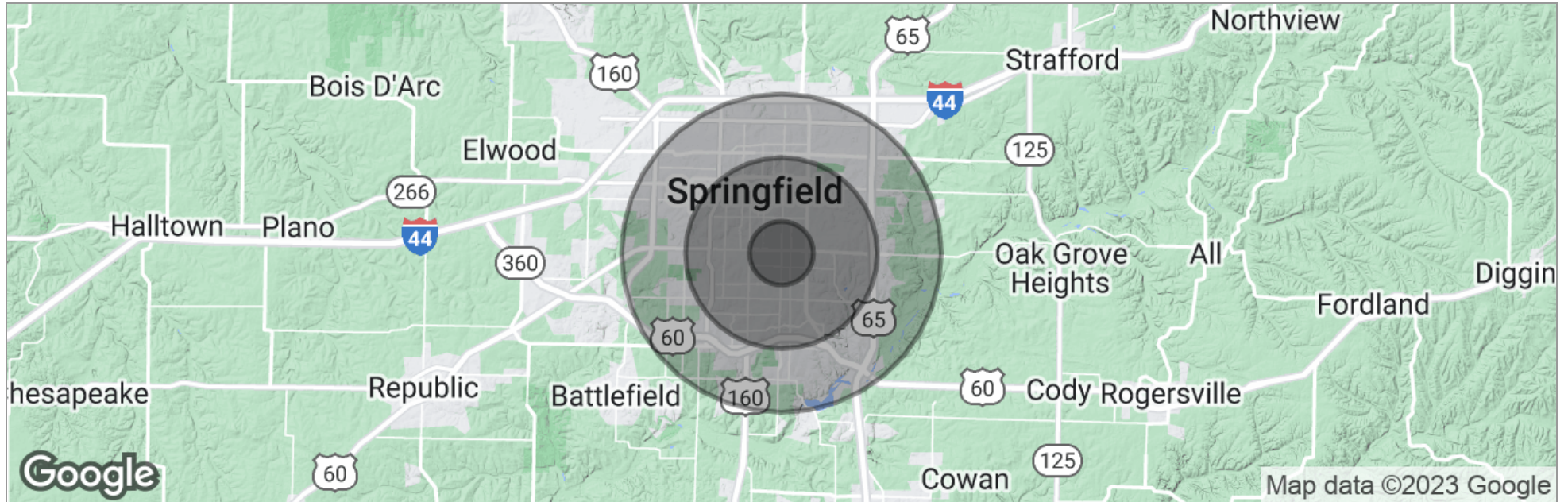
R.B. | MURRAY COMPANY
COMMERCIAL & INDUSTRIAL REAL ESTATE

OFFICE BUILDING
FOR LEASE

FULLY UPDATED | FURNISHED OFFICE BUILDING
1855 S NATIONAL AVE, SUITE A, SPRINGFIELD, MO 65804



Demographics Map



	1 Mile	3 Miles	5 Miles
Total Population	9,605	94,559	183,048
Population Density	3,057	3,344	2,331
Median Age	34.7	33.5	34.8
Median Age (Male)	31.5	31.9	33.4
Median Age (Female)	39.2	35.0	36.0
Total Households	4,675	43,060	80,701
# of Persons Per HH	2.1	2.2	2.3
Average HH Income	\$54,197	\$42,720	\$46,135
Average House Value	\$170,252	\$142,785	\$137,768

* Demographic data derived from 2020 ACS - US Census

Ross Murray, SIOR, CCIM | 417.881.0600 | ross@rbmurray.com
 Ryan Murray, SIOR, CCIM, LEED AP, CPM | 417.881.0600 | ryan@rbmurray.com
 Robert Murray, Jr., SIOR | 417.881.0600 | bob@rbmurray.com
 2225 S. Blackman Road | Springfield, MO 65809 | 417.881.0600

R.B. | MURRAY COMPANY
 COMMERCIAL & INDUSTRIAL REAL ESTATE

Advisor Bio & Contact

ROSS MURRAY, SIOR, CCIM
President



2225 S. Blackman Road
Springfield, MO 65809

T 417.881.0600
ross@rbmurray.com
MO #2004035357

Professional Background

Ross Murray is committed to carrying on the third generation of the family legacy. He studied at the University of Mississippi (Ole Miss) and graduated with distinction from Drury University with a degree in marketing and a minor in world studies. He earned designations with the Society of Industrial Realtors (SIOR) and Certified Commercial Investment Member (CCIM) through graduate-level training, high sale/lease volumes, and a demonstration of professionalism and ethics only showcased by industry experts. He is the only broker in Southwest Missouri besides his father, David Murray, to hold both SIOR and CCIM designations. Ross has the knowledge and experience to be a trusted and strategic real estate partner while specializing in investment sales, industrial, retail, office, and vacant land sales and leasing.

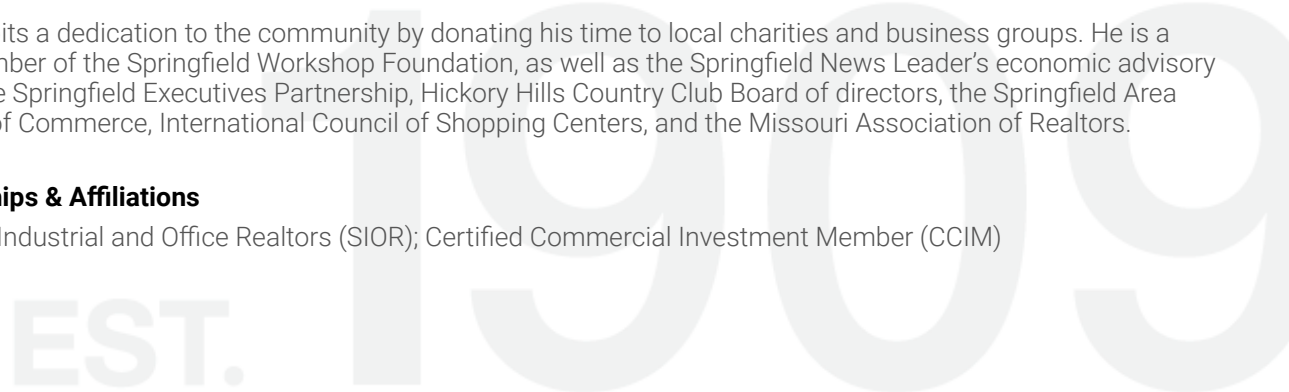
Since the industry downturn Ross has brokered many significant investment transactions totaling over 5,000,000 square feet. Notable transactions include the Town & Country Shopping Plaza, a national FedEx facility, Super Center Plaza Shopping Center, the Regional Headquarters for Wellpoint Blue Cross Blue Shield, University of Phoenix Regional Campus, and French Quarter Plaza.

Ross was recently selected as an honoree of one of the Springfield Business Journal's 2014 "40 Under 40" for being one of Springfield's brightest and most accomplished young business professionals. His current marketing projects include Project 60/65, a mixed-use development that covers 600 acres in Southeast Springfield, and the TerraGreen Office Park, one of the first sustainable LEED concept office developments in the area. Check out www.terragreenoffice.com for information.

Ross exhibits a dedication to the community by donating his time to local charities and business groups. He is a board member of the Springfield Workshop Foundation, as well as the Springfield News Leader's economic advisory council, the Springfield Executives Partnership, Hickory Hills Country Club Board of directors, the Springfield Area Chamber of Commerce, International Council of Shopping Centers, and the Missouri Association of Realtors.

Memberships & Affiliations

Society of Industrial and Office Realtors (SIOR); Certified Commercial Investment Member (CCIM)



Advisor Bio & Contact

RYAN MURRAY, SIOR, CCIM, LEED AP, CPM

Chief Executive Officer



2225 S. Blackman Road
Springfield, MO 65809

T 417.881.0600
F 417.882.0541
ryan@rbmurray.com
MO #2007030465

Professional Background

Ryan Murray joined R.B. Murray Company after graduating with Distinction Honors with a B.A. in Business Administration, and obtaining the Leeds School of Business Real Estate Certificate, from the University of Colorado. He was later named Vice President, specializing in the sales & leasing of office, retail, and industrial properties. Mr. Murray also oversees R.B Murray Company's property management & receivership divisions.

Recently Mr. Murray obtained the Society of Industrial and Office Realtors (SIOR) designation, a professional achievement for highly qualified commercial real estate practitioners with a strong transactional history in brokerage. SIOR individual members are the best in the commercial real estate industry, and the top-producers in their field. SIOR members are in more than 630 cities and 33 countries worldwide, and are recognized as top producing professionals – closing on average more than 30 transactions per year, and have met stringent production, education, and ethical requirements.

Mr. Murray has achieved the Certified Commercial Investment Member Designation (CCIM), and was one of the state's first commercial real estate professionals to achieve Leadership in Energy and Environmental Design Accredited Professional (LEED AP) status. As a Certified Commercial Investment Member (CCIM) Mr. Murray is a recognized expert in the disciplines of commercial and investment real estate, and as a LEED AP Mr. Murray has demonstrated a thorough understanding of green building practices and principles and the LEED Rating System.

Mr. Murray has also earned Certified Property Manager® (CPM®) designation from the Institute of Real Estate Management (IREM®), an affiliate of the National Association of REALTORS®. The CPM® designation is awarded to real estate managers who have met the Institute's rigorous requirements in the areas of professional education, examination and experience. CPM® Members must also abide by a rigorous Code of Professional Ethics that is strictly enforced by the Institute.

Mr. Murray currently serves as a director on the OTC Foundation Board and the Rotary Club of Springfield Southeast Board, is a past member of the Board of Directors for the Make-A-Wish® Foundation of Missouri, and a graduate of the Leadership Springfield program. Mr. Murray lives in Springfield with his wife Maggie and their son & daughter.

Memberships & Affiliations

SIOR, CCIM, LEED AP, CPM

Advisor Bio & Contact

ROBERT MURRAY, JR., SIOR
Chief Financial Officer



2225 S. Blackman Road
Springfield, MO 65809

T 417.881.0600
F 417.882.0541
bob@rbmurray.com
MO #1999022566

Professional Background

For more than 50 years, Robert B. Murray, Jr. has been developing, selling and leasing commercial real estate. Offering a wealth of experience and insight, he is an active member of the Society of Industrial and Office Realtors (SIOR), and has worked extensively with some of the largest commercial and industrial real estate firms in the country.

A graduate of Drury College, Bob furthered his education by attending classes at the Master Appraisal Institute (MAI) and seminars through the International Council of Shopping Centers (ICSC). In 1984, he became a member of the Society of Industrial and Office Realtors (SIOR).

Bob is also active in the Springfield business community. He presently is a member of the Emeritus Board of Lester E. Cox Medical Center. In the past, Bob has been a long standing member of the board of directors at Lester E. Cox Medical Centers, where he has been president and chaired the Buildings and Grounds Committee. Bob was a member of the Commerce Bank Board for 26.5 years, and he has also been a director of Hickory Hills Country Club and was the president of the Business and Development Division of the Springfield Area Chamber of Commerce.

Memberships & Affiliations

Society of Industrial and Office Realtors (SIOR)

EST. 1909