

FOR LEASE

4270 SW Cedar Hills Boulevard

Beaverton, Oregon



Medical/Retail/Office Space

Property Description

Available Space: Approximately 1,334 USF
Uses: Medical, service retail, or office
Parking: 3/1,000 SF of area leased
Zoning: RCTO, Regional Center - Transit Oriented
City of Beaverton

Terms

Lease Rate: \$16/SF/Year
Tenants pay utilities and janitorial
Term: 3-5 year lease term

Amenities

- One block to Light Rail
- Nearby restaurants and retail shops
- Easy access to Highway 217
- Signage available

For additional information, contact:

John Van Zonneveld

Direct: 503.972.7290

johnv@macadamforbes.com

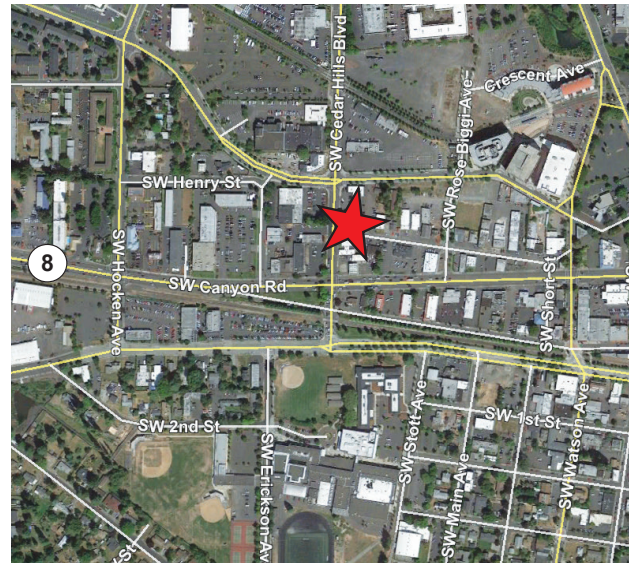
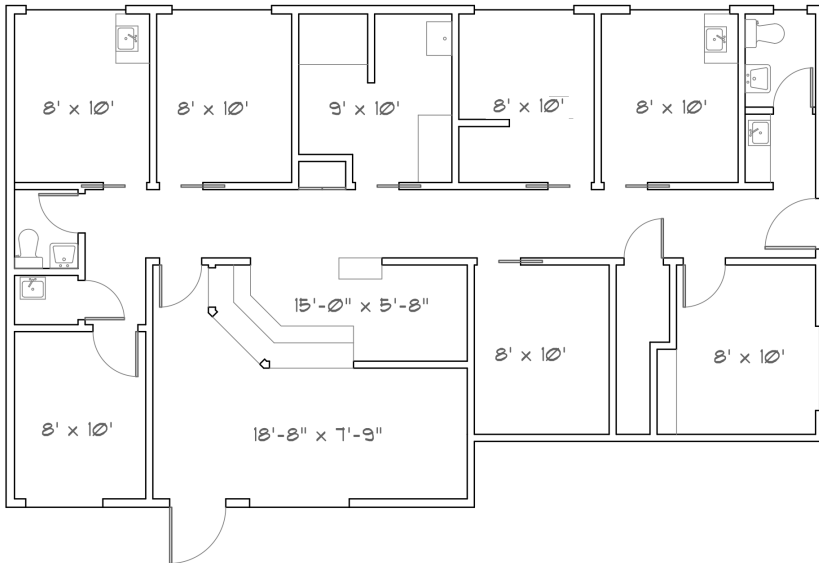
1800 SW First Avenue, Suite 650

Portland, OR 97201

Main: 503.227.2500

www.macadamforbes.com





For additional information, contact:

John Van Zonneveld

Direct: 503.972.7290

johnv@macadamforbes.com

1800 SW First Avenue, Suite 650, Portland, OR 97201

P 503.227.2500 / www.macadamforbes.com

