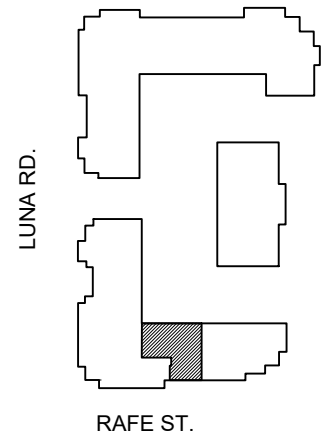
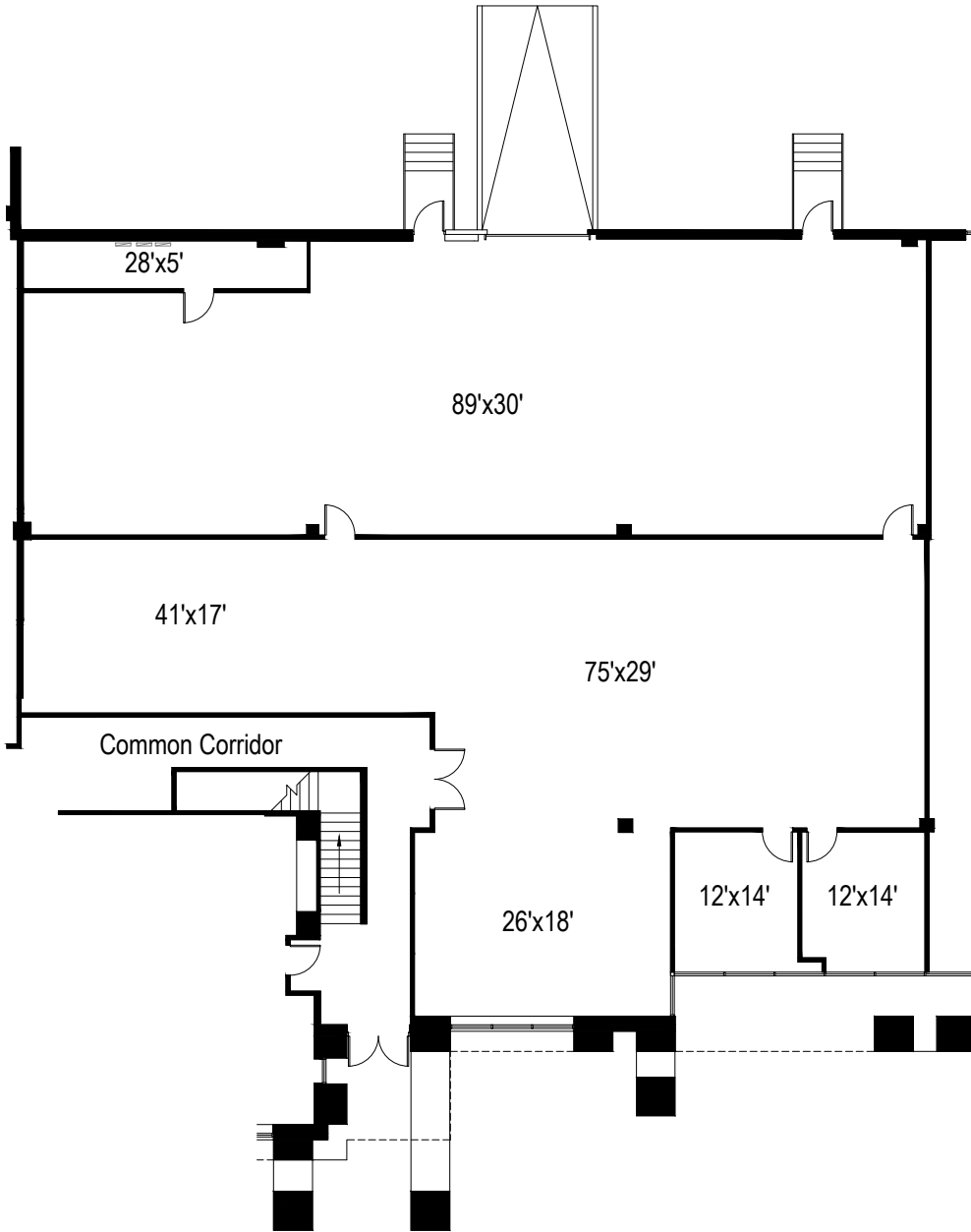




PSBUSINESSPARKS.



VALWOOD BUSINESS PARK - SUITE 170

1505 LUNA ROAD, CARROLLTON

6,460 RSF

OFFICE AREA:

3,870 RSF



OWNED AND OPERATED BY

PSBUSINESSPARKS

www.psbusinessparks.com

FOR LEASING CONTACT:

972-907-3610