

# Luminary

L O N D O N



# Luminary London

Located on Vine Street, Aldgate, Luminary shines new light on what happens when businesses and curious minds meet. 49,000 sq ft will be open for brilliance, attracting talent to one of the City's most inspiring commercial spaces.



11 floors



Typical floorplate size  
4,800 sq ft/440 sq m (NIA)



Excellent transport links



Dramatic views over the  
City and towards the river



Designed by leading  
architects Apt



Roman Wall Exhibition



Coffee shop



To be completed  
summer 2021



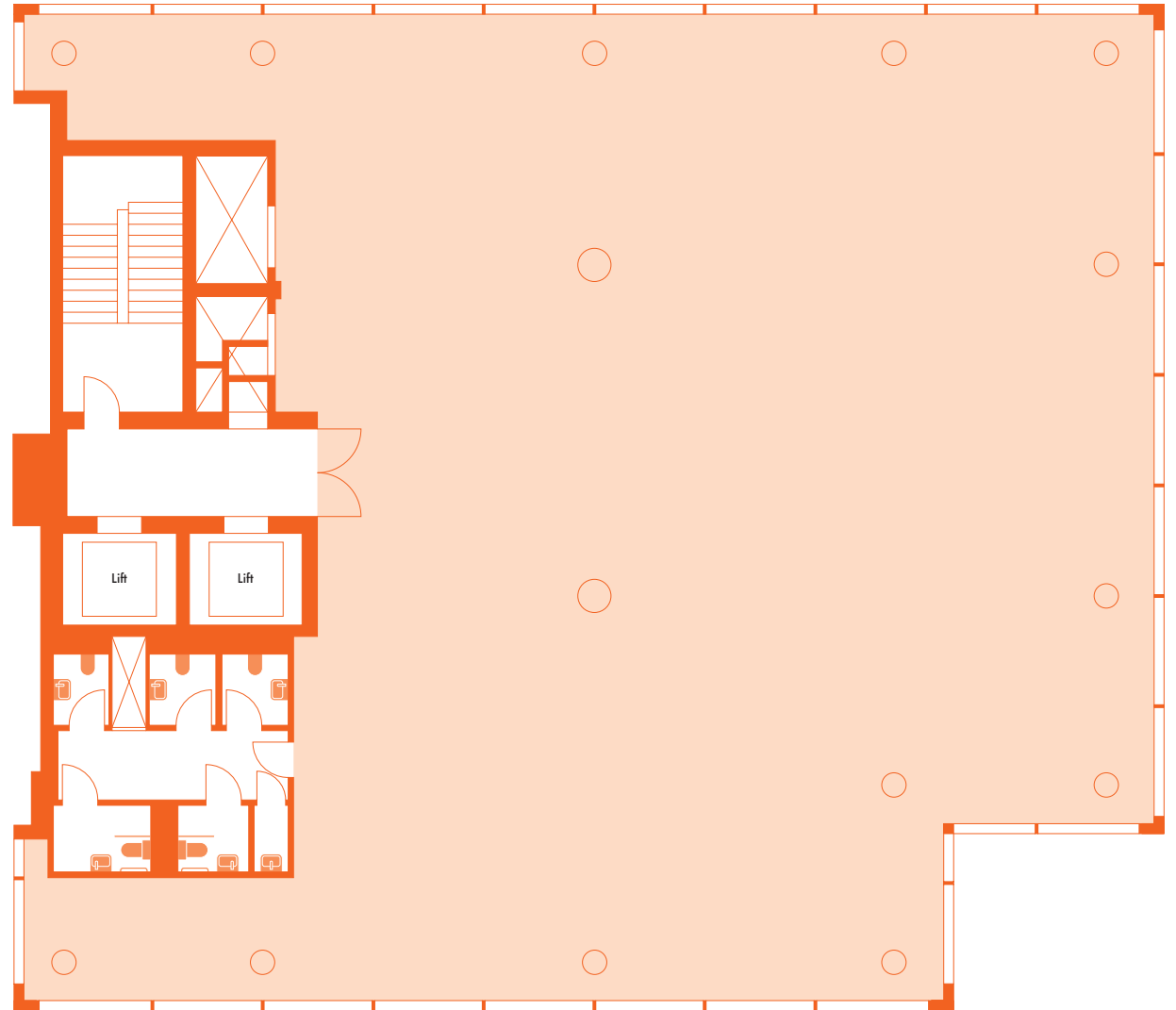
Luminary – building

# Typical floorplate

## Floor areas

Level	Office NIA ft <sup>2</sup>	Office NIA m <sup>2</sup>
11	2,831	263
10	3,240	301
09	4,004	372
08	4,284	398
07	4,542	422
06	4,736	440
05	4,725	439
04	4,822	448
03	4,822	448
02	4,822	448
01	3,886	361
G – Reception	2,615	243
<b>Total ft<sup>2</sup>/m<sup>2</sup></b>	<b>49,331</b>	<b>4,583</b>

Floors 10 and 11 will be connected via a dramatic internal spiral staircase in the north west corner of the floorplate.



# Specification



Over 90  
cycle spaces



Male and female changing  
rooms, each with 4 showers



2 x 13 person  
passenger lifts



Designed to achieve  
BREEAM Excellent



Gold Wired  
Certification



Occupancy ratio  
1:8 per sq m



Exposed  
finishes



Floor to ceiling height  
from 2.6m to 2.75m



Raised floors  
(110mm overall)



10th floor  
roof terrace



Luminary — reception

# Travel times



Aldgate Station  
3 minutes walk



Fenchurch Street  
3 minutes walk



Aldgate East Station  
5 minutes walk



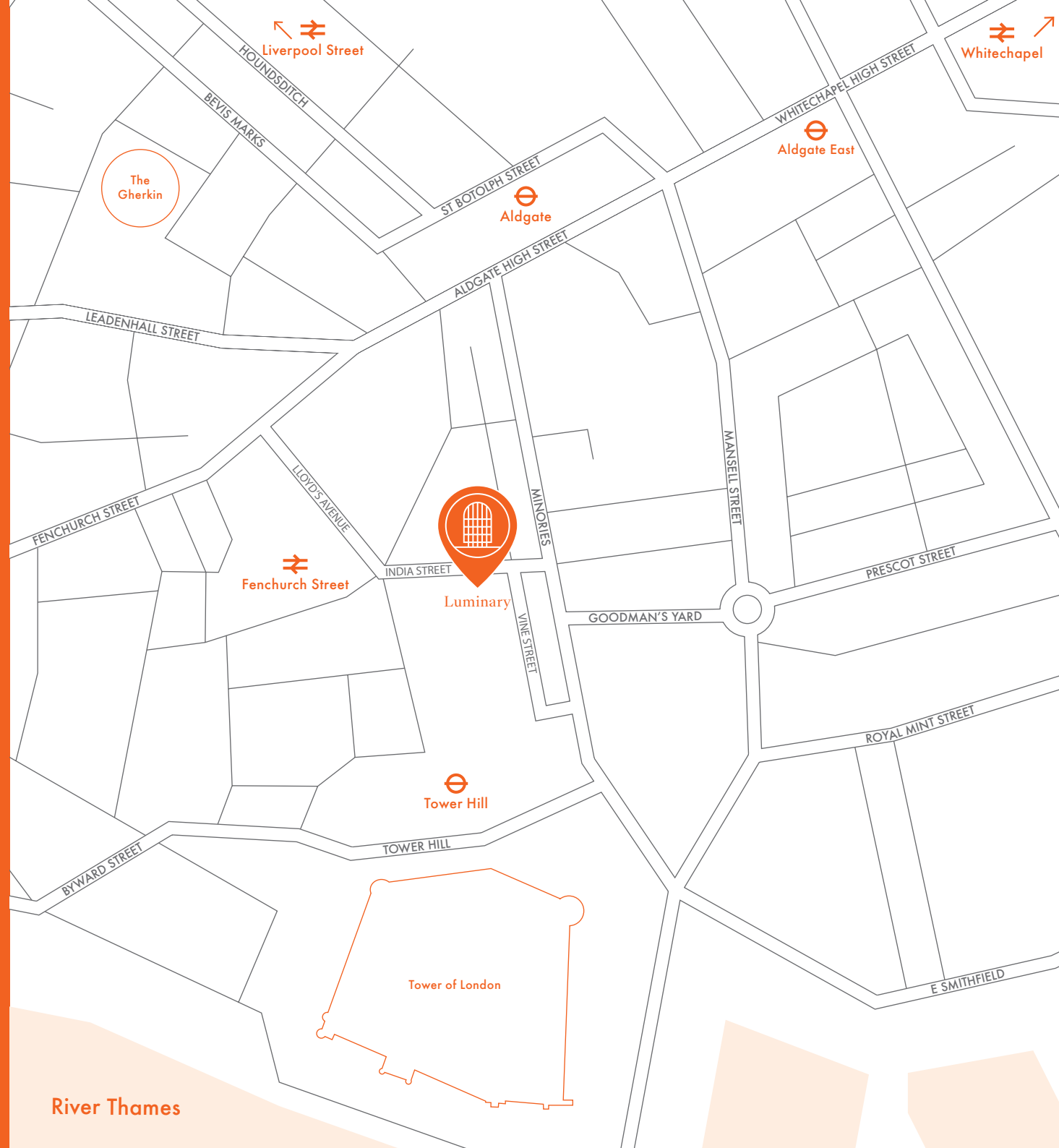
Tower Hill Station  
5 minutes walk



Liverpool Street Crossrail Station  
15 minutes walk



Whitechapel Crossrail Station  
18 minutes walk



# Contact us

**Simon Conie**

simon.conie@cbre.com

020 7182 3403

**Freddie Morris**

freddie.morris@cbre.com

020 7182 2814

**Luminary.London**

Advised by

**CBRE**

MISREPRESENTATION ACT 1967 and PROPERTY MISDESCRIPTIONS ACT 1991 CBRE and their clients give notice that: (i) These particulars do not form part of any offer or contract and must not be relied upon as statements or representations of fact. (ii) No person in the employment of the agent(s) has any authority to make or give any representation or warranty whatever in relation to this property. (iii) Floor areas, measurements or distances given are approximate. Unless otherwise stated, any rents, or outgoings quoted are exclusive of VAT. (iv) Any descriptions given of the property cannot be taken to imply, it is in good repair, has all necessary consents, is free of contamination, or that the services and facilities are in working order. Interested parties are advised to carry out their own investigations as required. December 2018.



Luminary – view on an upper office floor