

FOR LEASE
3340 W Norfolk Road
Portsmouth, VA



18 acre site zoned IN – Heavy Industrial

Ideally located and in close proximity to Port of Virginia Shipping Terminals:

1 mile to Virginia Gateway Shipping Terminal (VIG)

2 miles to Portsmouth Marine Terminal (PMT)

7 miles to Norfolk International Terminal

In close proximity to the interstate highway system and double stack intermodal service

Functional scale for truck or rail

For Information Contact:

John A. Merenda

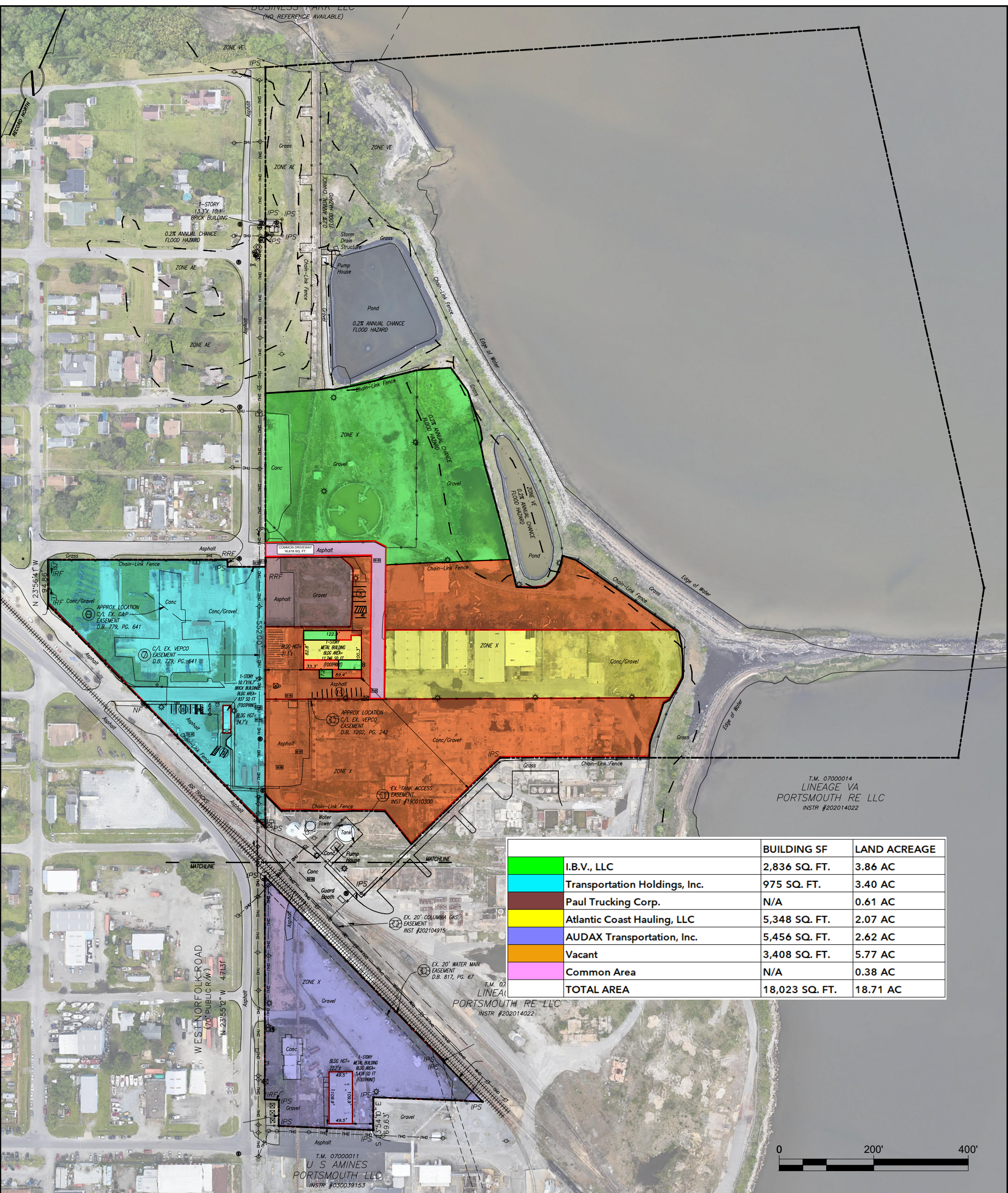
3908 Meeting House Road

Virginia Beach, VA 23455

Phone: (757)560-5476

johnmerenda1@yahoo.com





T.M. 07000014
 LINEAGE VA
 PORTSMOUTH RE LLC
 INSTR #202014022

	BUILDING SF	LAND ACREAGE
 I.B.V., LLC	2,836 SQ. FT.	3.86 AC
 Transportation Holdings, Inc.	975 SQ. FT.	3.40 AC
 Paul Trucking Corp.	N/A	0.61 AC
 Atlantic Coast Hauling, LLC	5,348 SQ. FT.	2.07 AC
 AUDAX Transportation, Inc.	5,456 SQ. FT.	2.62 AC
 Vacant	3,408 SQ. FT.	5.77 AC
 Common Area	N/A	0.38 AC
TOTAL AREA	18,023 SQ. FT.	18.71 AC

