



# 35 East 21st Street

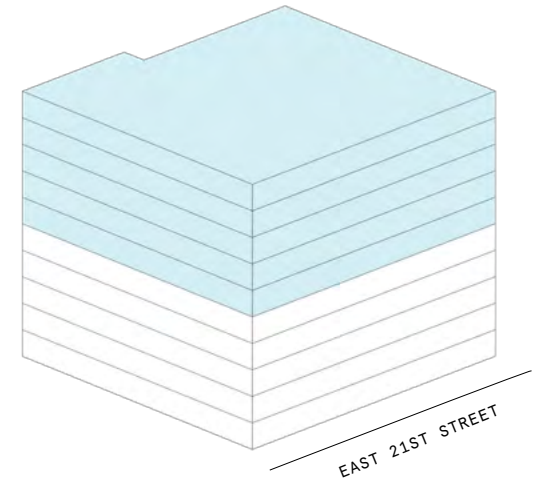
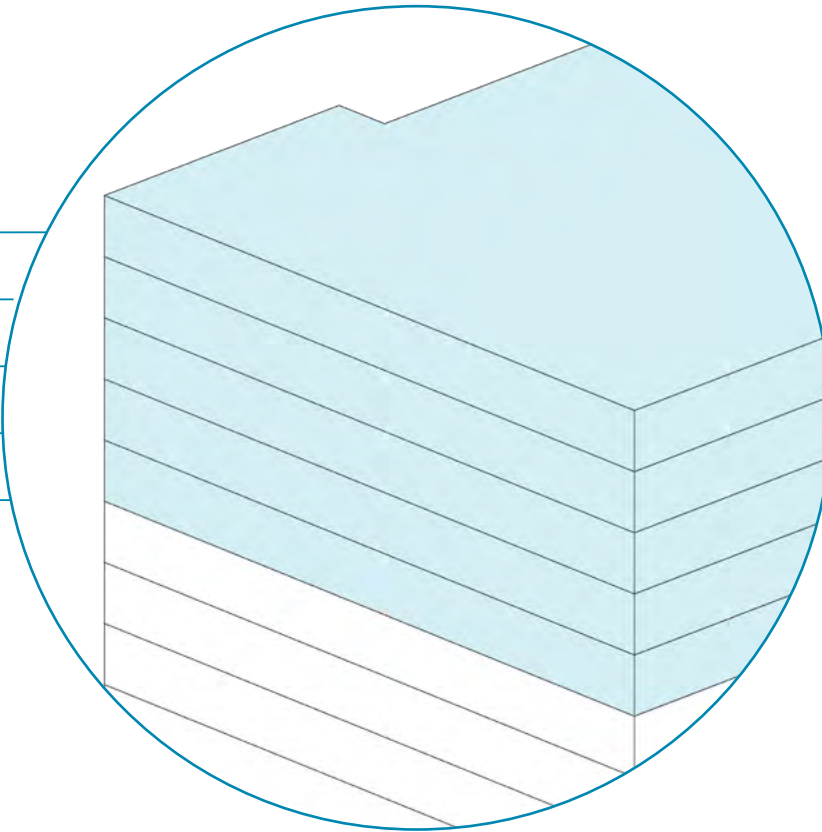
## Space availability summary

WeWork @ 35 East 21st Street  
New York, NY

**wework**

[VIEW VIRTUAL TOUR](#)

10th Floor 10,864 RSF  
9th Floor 10,864 RSF  
8th Floor 5,179 RSF  
7th Floor 5,179 RSF  
6th Floor 5,179 RSF



---

**37,265 RSF**

TOTAL WEWORK RSF

---

**35 East 21st Street**

At a glance

---

---

Workspaces designed for productivity and creativity with flexible size & term

---

Move-in ready full floors of up to 10,864 RSF

---

**10**

TOTAL BUILDING FLOORS

---

**100,000**

TOTAL BUILDING SQ FT



A staple of pre-war New York buildings, exposed brick walls are featured throughout the space.



Minimalist furniture and a neutral palette give this meeting room its light, bright feel.

## A historic workspace in the Flatiron District

---

Built in 1905, 35 East 21st Street is a 10-story Art Nouveau-style building in the heart of Manhattan's Flatiron District. WeWork's offering in this unique building spans five floors and features a mix of sleek private offices, sunny workspaces, and meeting rooms designed for productivity and collaboration.



Workspaces feature modern furnishings, exposed ceilings, and oversized windows.

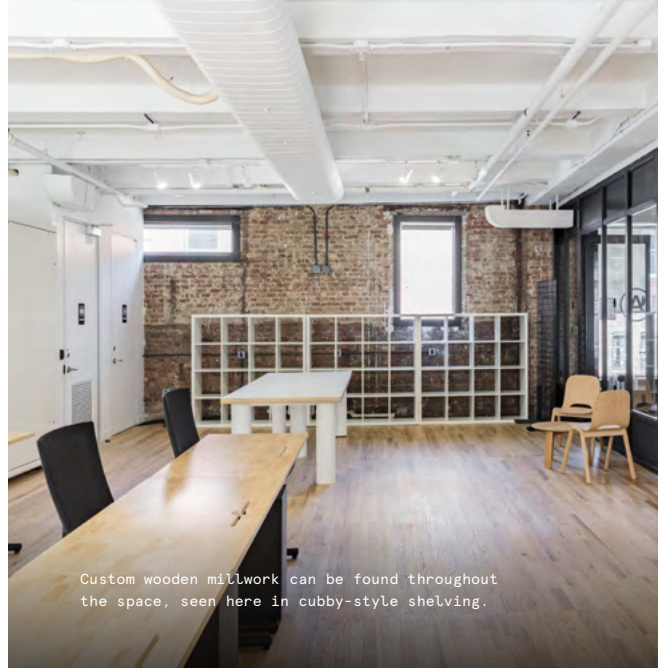


Wooden flooring and marled upholstery along with patterned rugs, add warmth and texture to the space.

# Historic character meets modern design

35 East 21st Street's design approach was kept intentionally minimal, allowing the building's architectural details to take center stage. Modern furnishings, a neutral palette, and a mix of natural and industrial materials come together for a fresh workspace with plenty of historic charm.

- Industrial elements—including brick walls, exposed ductwork, and metal accents—pay homage to the building's original architecture
- The mix of textures and materials includes terrazzo countertops, soft textiles, and warm hardwood floors
- Artworks were designed to add dramatic effect and local flair to the space



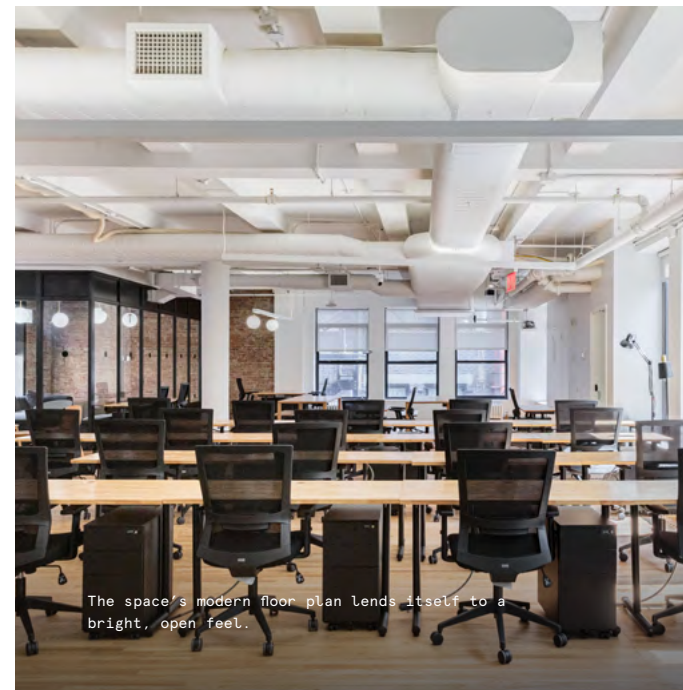
Custom wooden millwork can be found throughout the space, seen here in cubby-style shelving.



A modern, minimal design approach allows the building's industrial character to shine.



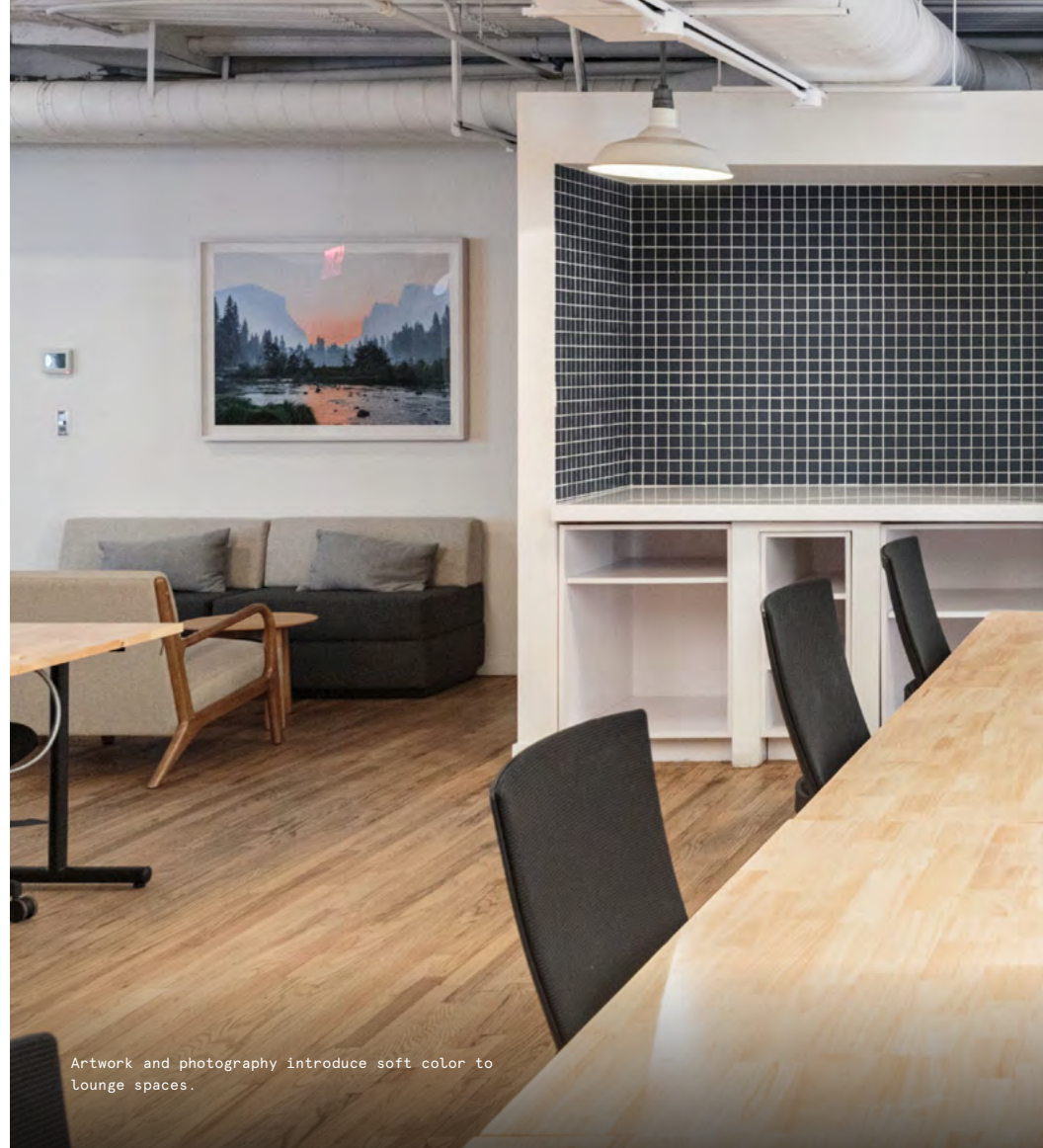
Shag upholstery gives this mid-century-inspired lounge chair a touch of comfort and texture.



The space's modern floor plan lends itself to a bright, open feel.



Terrazzo countertops and a white tile backsplash are featured in the community pantry.



Artwork and photography introduce soft color to lounge spaces.

## On-site amenities

---

- 24/7 security
- Electronic keycard access
- US mail drop
- Meeting rooms
- Mother's room

- Phone booths
- Event space
- Stage/auditorium
- Dog-friendly spaces

# Building specifications

---



## Hours of operation

---

Monday - Friday: 9am - 6pm



## Elevators

---

2 passenger elevators  
2 freight elevators



## Building size

---

10 stories  
100,000 SF



## HVAC

---

Monday - Friday: 8am-8pm



## Security

---

24/7 attended lobby  
24/7 CCTV monitoring



## Fire strategy







---

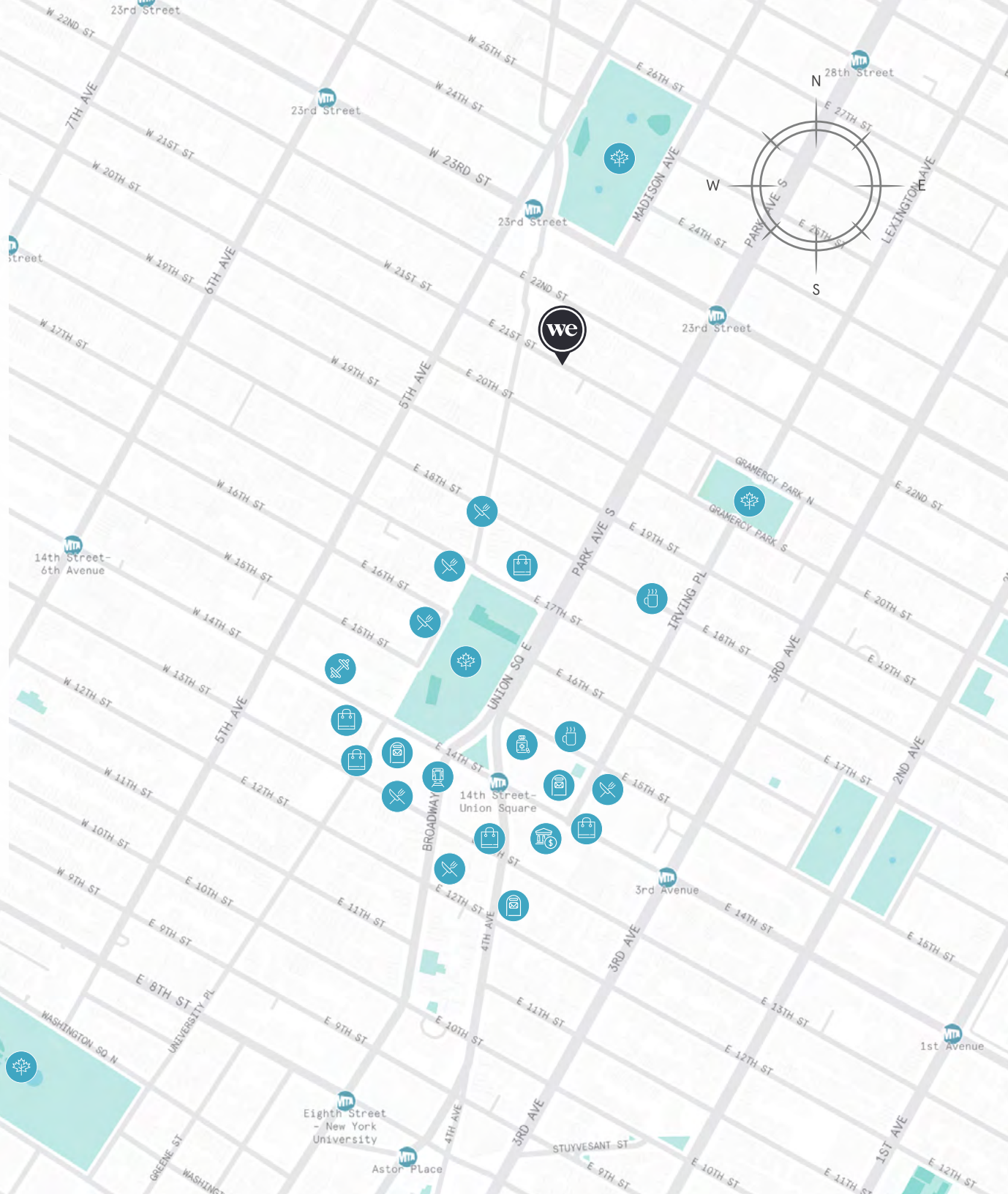
Fully-sprinklered floors

# Workspace in the heart of the Flatiron District

35 East 21st Street is located in the middle of Flatiron—one of Manhattan’s most iconic neighborhoods. Situated between Madison Square Park to the north and Union Square Park to the south, this location gives members easy access to some of the city’s best restaurants, bars, and attractions. The building is also ideal for commuters, thanks to a variety of public transportation options nearby.

## Distance to WeWork

Grand Central Terminal	 Subway	9 min
Times Square	 Subway	15 min
Penn Station	 Subway	15 min
Upper East Side	 Subway	25 min
Jersey City	 Bus	45 min
Staten Island (from Staten Island Ferry)	 Ferry	54 min



# 6th Floor

5,179 RSF



6  
MEETING ROOM(S)

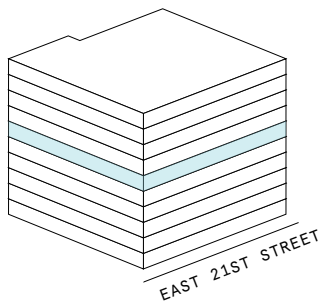
3  
SHARED WORKSPACE(S)

## LEGEND

- MEETING ROOM
- SHARED WORKSPACE
- DEDICATED SPACE



EAST 21ST STREET



# 6th Floor

5,179 RSF

5,179 RSF Suite 6-100

6

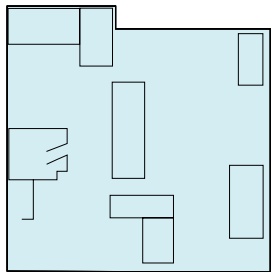
MEETING ROOM(S)

1

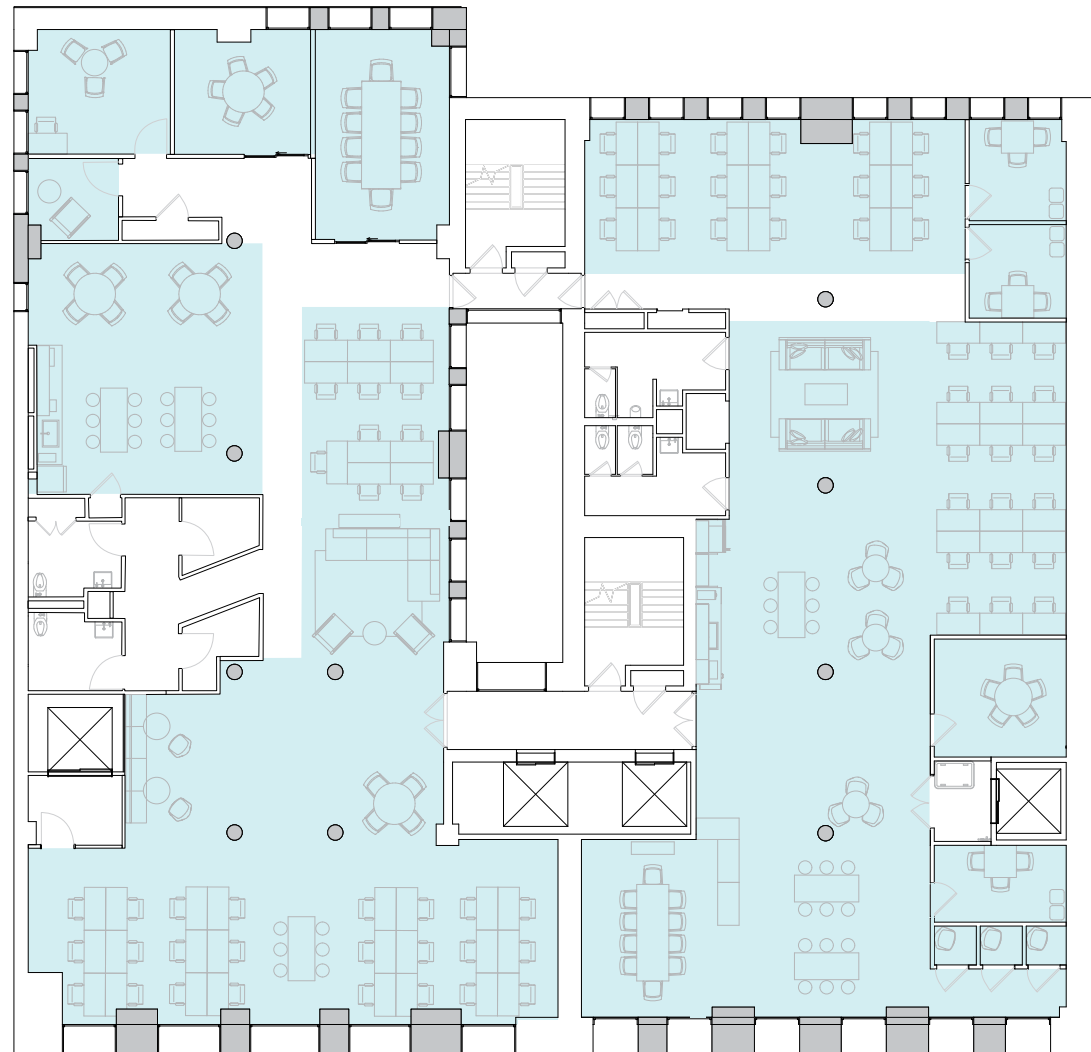
PRIVATE OFFICE(S)

## LEGEND

 DEDICATED SPACE



EAST 21ST STREET



EAST 21ST STREET

# 7th Floor

5,179 RSF

2

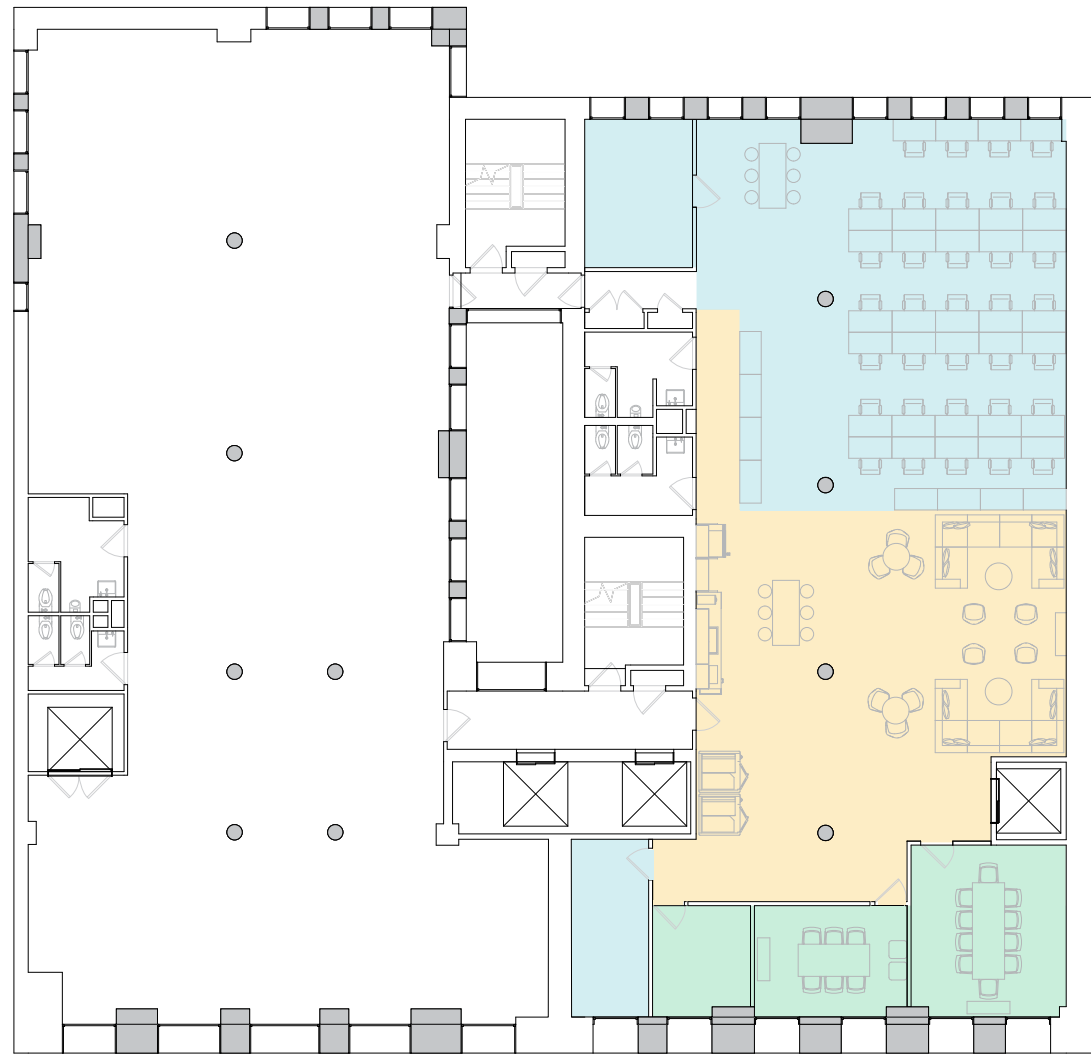
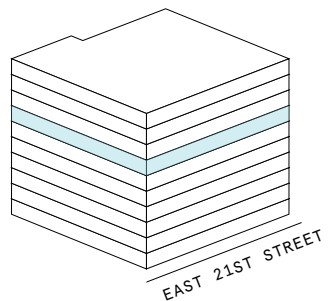
MEETING ROOM(S)

1

SHARED WORKSPACE(S)

## LEGEND

- MEETING ROOM
- SHARED WORKSPACE
- DEDICATED SPACE



EAST 21ST STREET

# 7th Floor

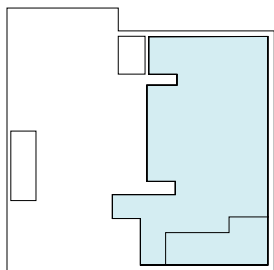
5,179 RSF

5,179 RSF Suite 7-100

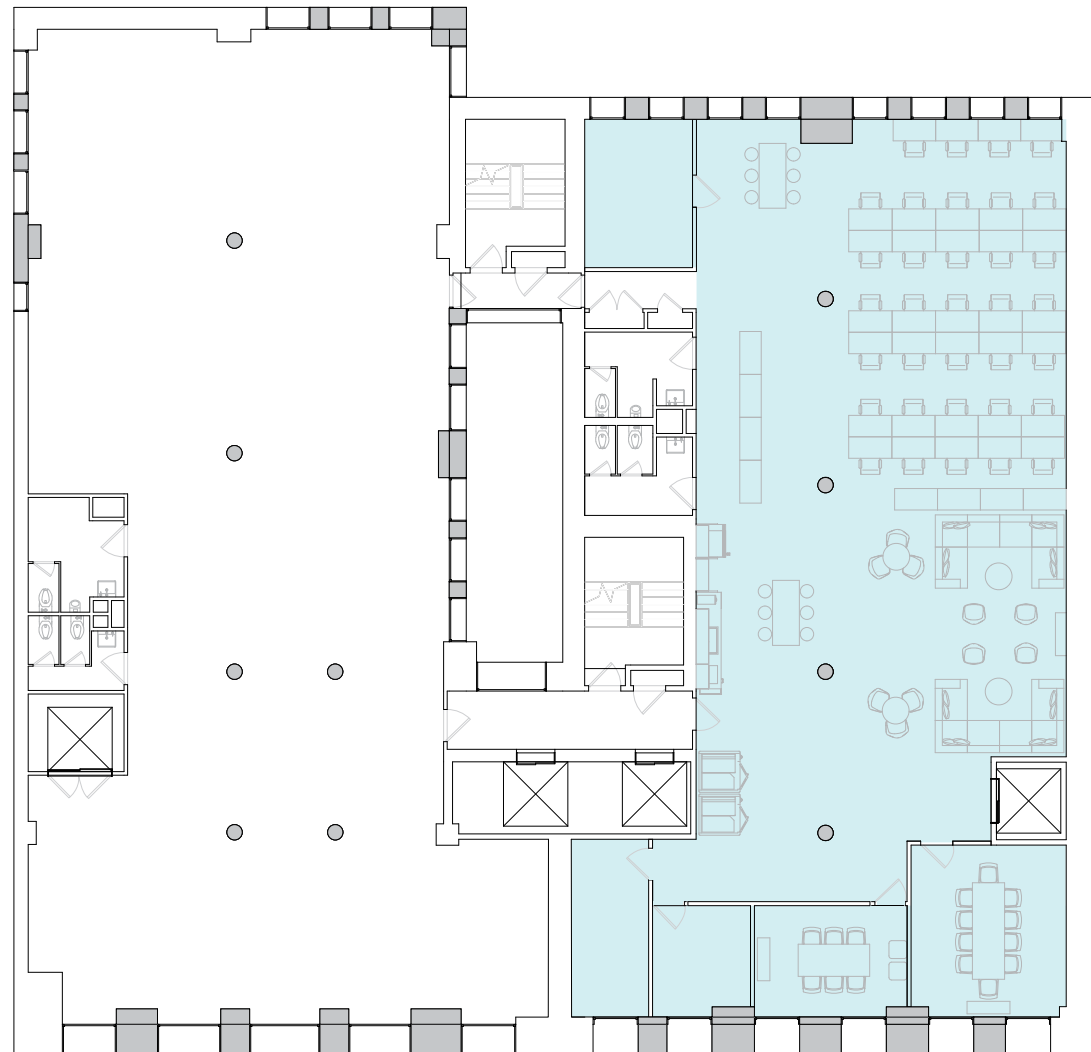
2  
MEETING ROOM(S)

## LEGEND

 DEDICATED SPACE



EAST 21ST STREET



EAST 21ST STREET

# 8th Floor

5,179 RSF

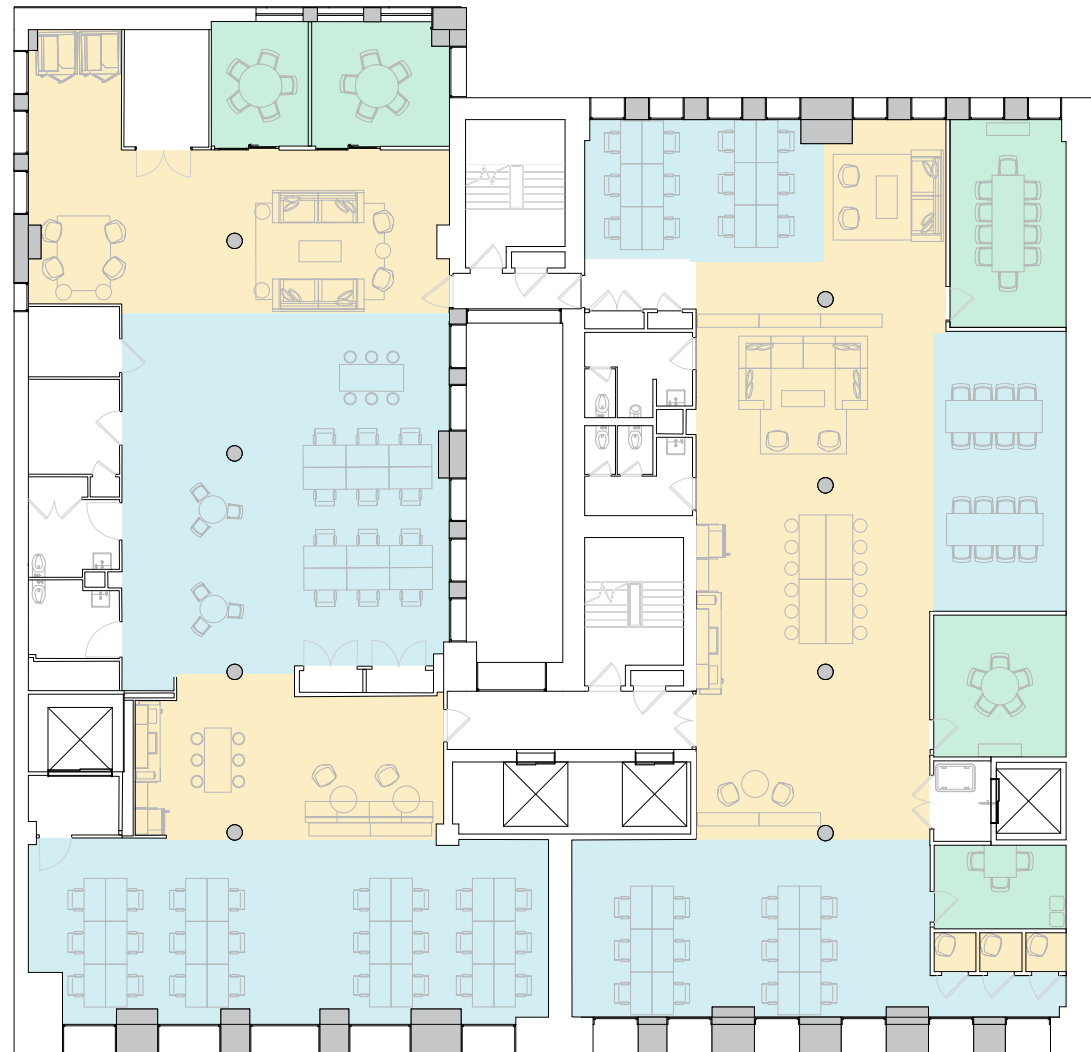
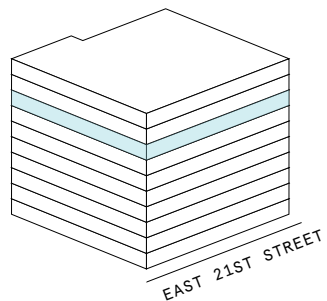


5  
MEETING ROOM(S)

4  
SHARED WORKSPACE(S)

## LEGEND

- MEETING ROOM
- SHARED WORKSPACE
- DEDICATED SPACE



EAST 21ST STREET

# 8th Floor

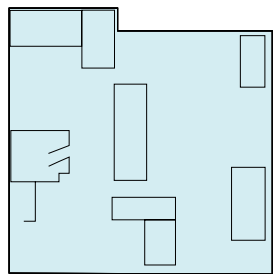
5,179 RSF

5,179 RSF Suite 8-100

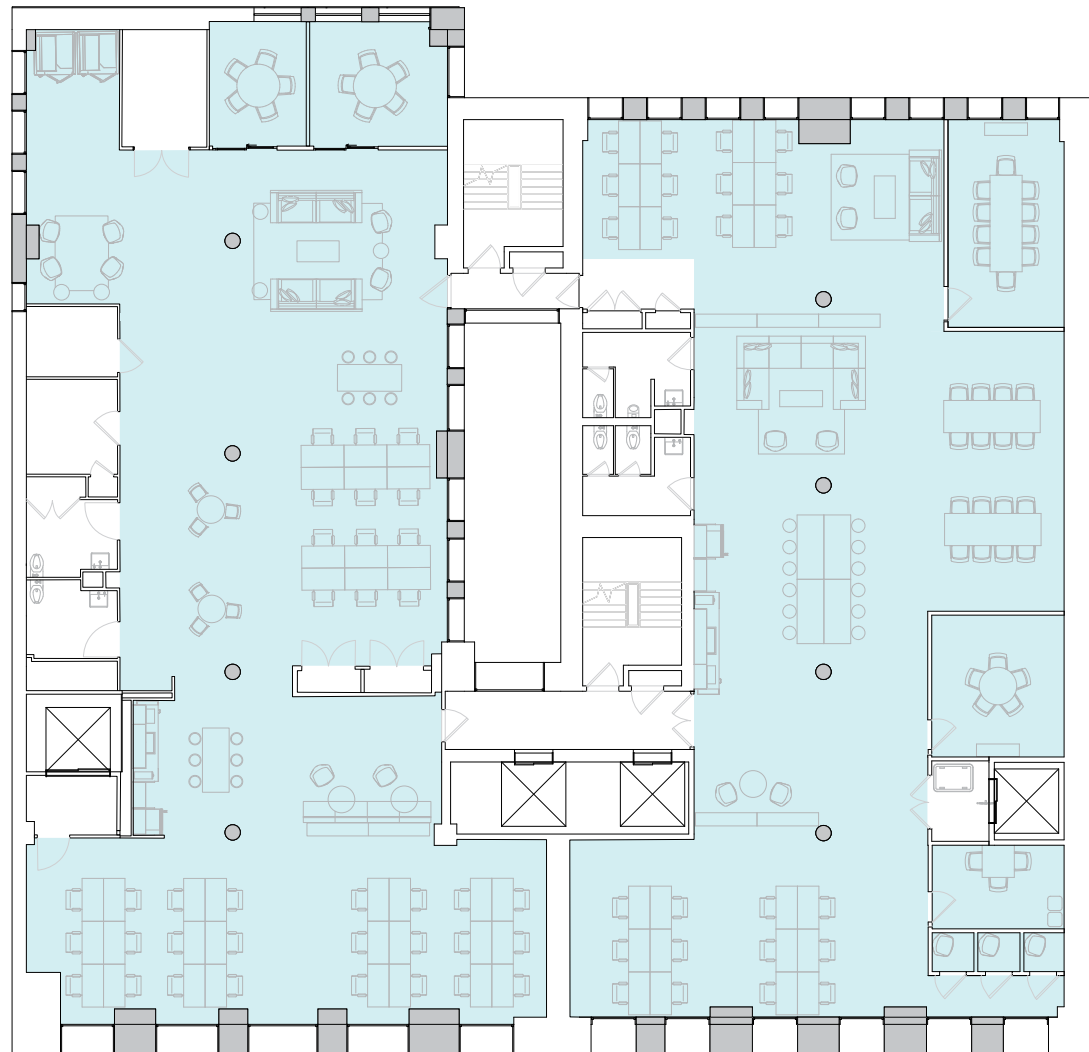
5  
MEETING ROOM(S)

## LEGEND

 DEDICATED SPACE



EAST 21ST STREET



EAST 21ST STREET

# 9th Floor

10,864 RSF






7

MEETING ROOM(S)

3

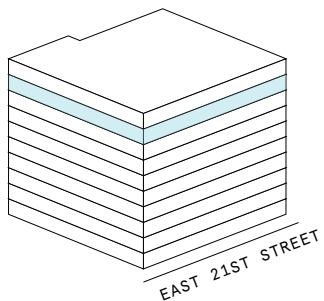
SHARED WORKSPACE(S)

## LEGEND

-  MEETING ROOM
-  SHARED WORKSPACE
-  DEDICATED SPACE



EAST 21ST STREET



# 9th Floor

10,864 RSF

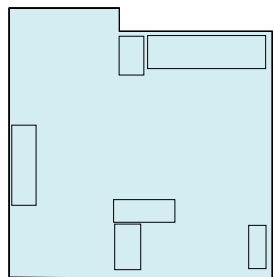
10,864 RSF Suite 9-100

7  
MEETING ROOM(S)

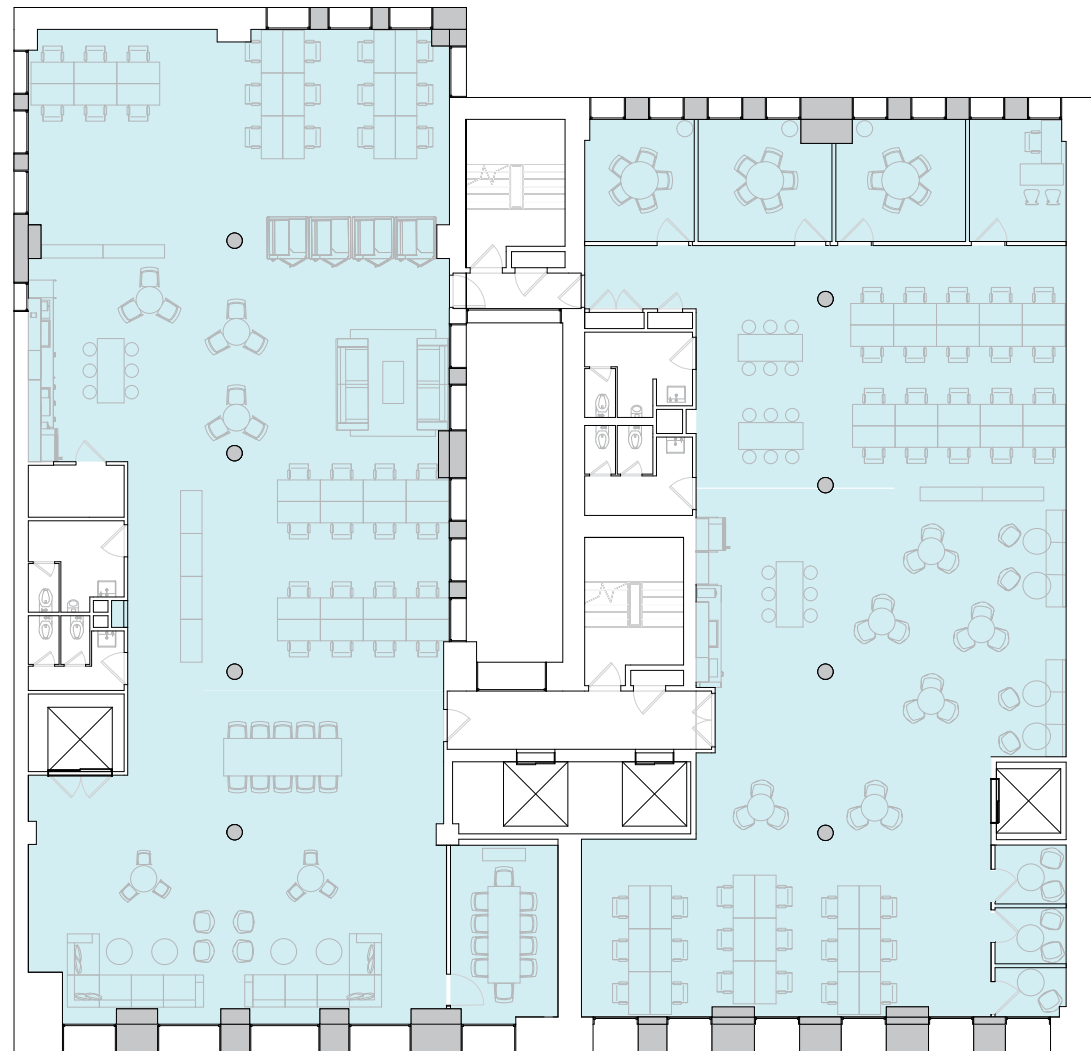
1  
PRIVATE OFFICE(S)

## LEGEND

 DEDICATED SPACE



EAST 21ST STREET



EAST 21ST STREET

# 10th Floor

10,864 RSF

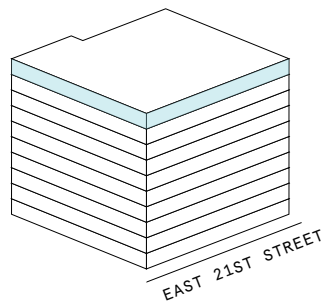


4  
MEETING ROOM(S)

2  
SHARED WORKSPACE(S)

## LEGEND

- MEETING ROOM
- SHARED WORKSPACE
- DEDICATED SPACE



EAST 21ST STREET

# 10th Floor

10,864 RSF

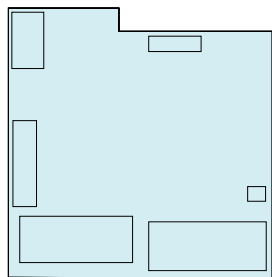
10,864 RSF Suite 10-100

4  
MEETING ROOM(S)

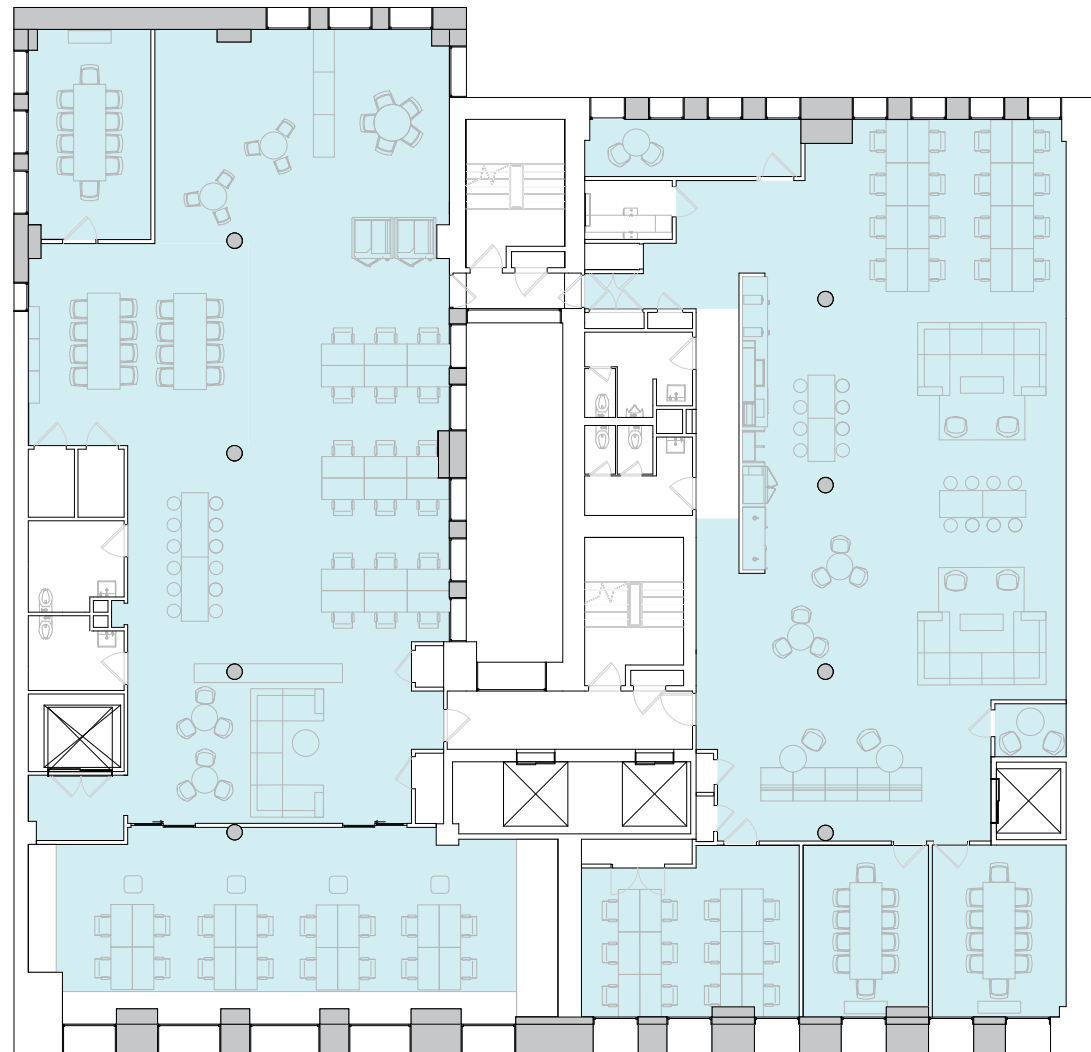
2  
PRIVATE OFFICE(S)

## LEGEND

 DEDICATED SPACE



EAST 21ST STREET



EAST 21ST STREET

# Contact

---

For leasing inquiries please reach out to our team.



**Kevin West**

PORTFOLIO DIRECTOR  
KEVIN.WEST@WEWORK.COM

**James Einstein**

LEASING DIRECTOR  
JAMES.EINSTEIN@WEWORK.COM  
203.984.9073