

FOR LEASE

CLAY TERRACE OFFICE SPACE

14300 & 14390 Clay Terrace Boulevard

Carmel, IN 46032



PROPERTY HIGHLIGHTS

1,880 to 8,982 SF Class A office space available

Unbeatable and walkable amenities (restaurant, retail, services, fitness, grocery)

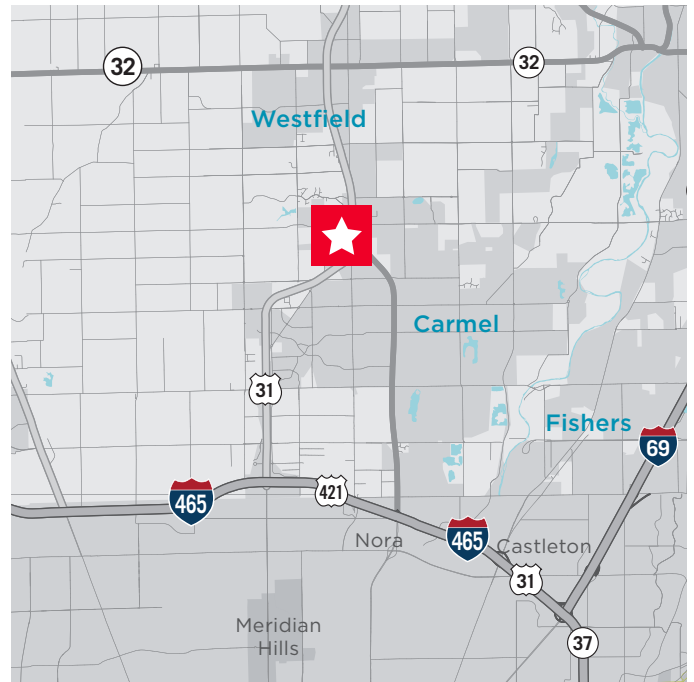
On-site management, maintenance & security personnel

Prestigious Carmel location

Immediate access to U.S. 31/Meridian Street

Owned by Washington Prime Group (NYSE: WPG)

One stoplight between you and Indianapolis International Airport



DAVID MOORE, SIOR, CCIM

Managing Director
+1 317 639 0490
david.moore@cushwake.com

BENNETT WILLIAMS

Director
+1 317 639 0442
bennett.williams@cushwake.com

MEGAN CUVELIER

Director
+1 317 352 5422
megan.cuvelier@cushwake.com



**CUSHMAN &
WAKEFIELD**

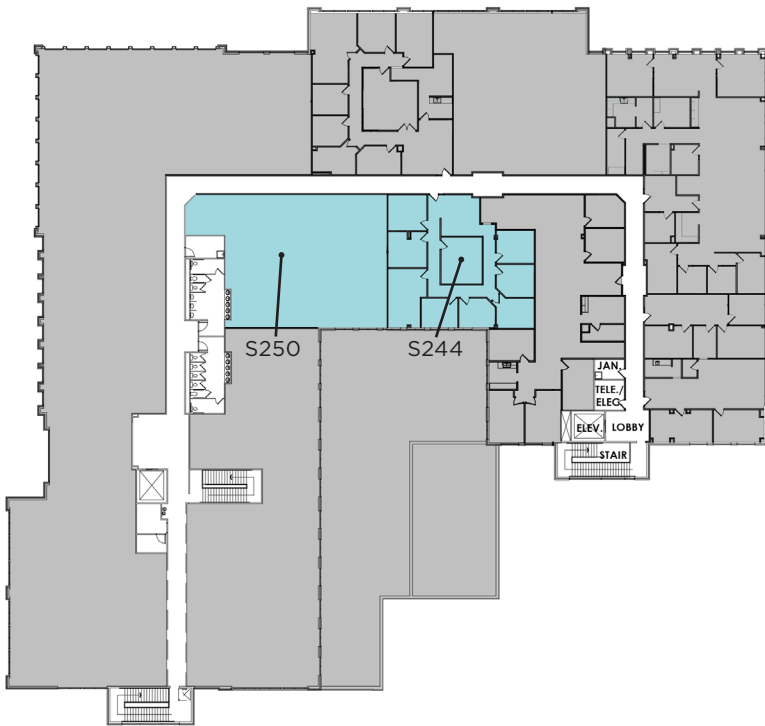
cushmanwakefield.com

CLAY TERRACE OFFICE SPACE

14300 & 14390 Clay Terrace Boulevard
Carmel, IN 46032

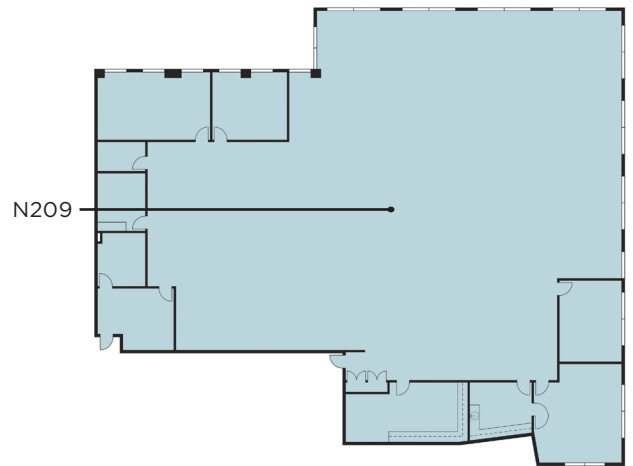
FOR LEASE

FLOOR PLANS



AVAILABLE SPACES:

Suite	SF	\$/SF
N209	8,982	\$28.50/sf, Full Service
S244	2,380	\$24.50/sf, Full Service
S250	1,880	\$24.50/sf, Full Service



ON-SITE AMENITIES



CUSHMAN & WAKEFIELD

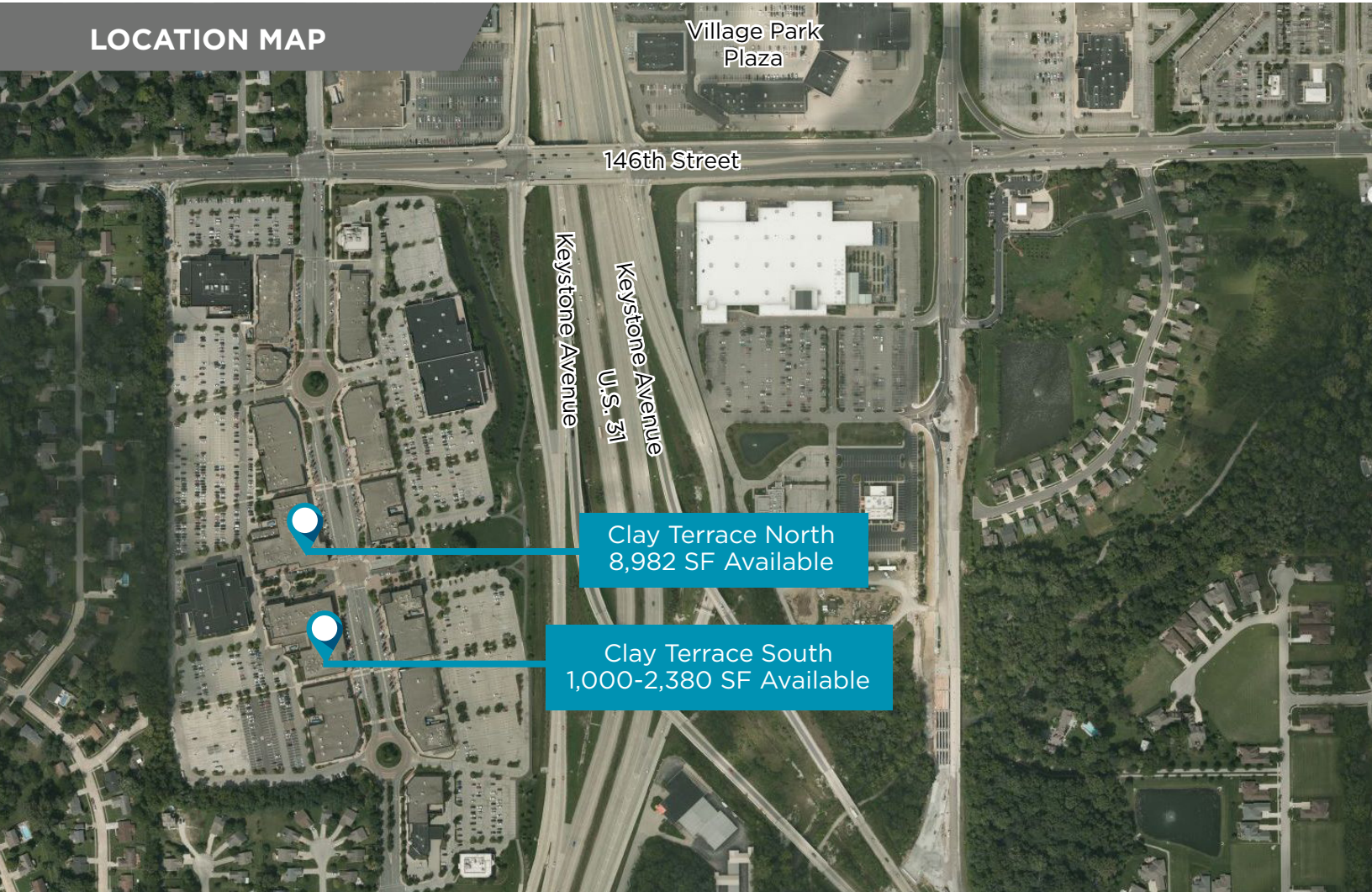
cushmanwakefield.com

CLAY TERRACE OFFICE SPACE

14300 & 14390 Clay Terrace Boulevard
Carmel, IN 46032

FOR LEASE

LOCATION MAP



Demographics

	1 Mile	3 Mile	5 Mile
Population	6,188	58,415	130,921
AVG. HH Income	\$100,882	\$93,713	\$98,737
Daytime Population	5,720	48,975	77,222

Traffic Counts

Clay Terrace Blvd. @ 146th Street	7,812 ADT
Meridian Street @ Keystone:	53,748 ADT



**CUSHMAN &
WAKEFIELD**

cushmanwakefield.com

CLAY TERRACE OFFICE SPACE

14300 & 14390 Clay Terrace Boulevard
Carmel, IN 46032

FOR LEASE

PROPERTY PHOTOS



DAVID A. MOORE, SIOR, CCIM
Managing Director
+1 317 639 0490
david.moore@cushmanwakefield.com

BENNETT WILLIAMS
Director
+1 317 639 0442
bennett.williams@cushmanwakefield.com

MEGAN CUVELIER
Director
+1 317 352 5422
megan.cuvelier@cushmanwakefield.com

One American Square
Suite 1800
Indianapolis, IN
Main +1 317 639 0515
cushmanwakefield.com
IndyOfficeSpace.com



**CUSHMAN &
WAKEFIELD**

cushmanwakefield.com