



Level 1/Suite 14/785 Pascoe Vale Road Glenroy VIC

Jerry Lee & Jason Sassine of Jason Commercial are pleased to offer for lease to the public market: Level 1, Suite 14/785 Pascoe Vale Road Glenroy.

This is your opportunity to be situated in one of Glenroy's most iconic buildings "Stuarts Corner", within a premier retail location close to long established and reputable businesses. A short stroll away from some great local cafe's, public transport and all-day car .

KEY FEATURES INCLUDE:

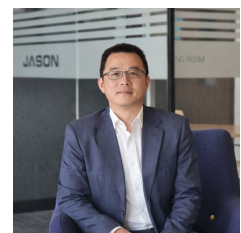
- * Building area: 40 m2 (approx)
- * Kitchenette
- * Open plan office
- * Commercial 1 zone

[For full version visit the website](https://www.jasonrealestate.com.au)

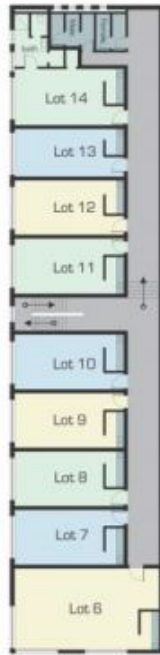
Type	: Offices
Price	: Contact Agent
Building Size	: 40 sqm
Land Size	: 28 sqm
View	: https://www.jasonrealestate.com.au/lease/vic/north/glenroy/commercial/offices/8186392



Andreas Belbasis
03 9338 6411



Jerry Lee
03 9304 1444



First Floor

Disclaimer: Please note that plans are intended only as a guide to assist with. All dimensions are approximate. Potential buyers/tenants should view the property in person.

First Floor, 785 Pascoe Vale Road Glenroy