

RETAIL / OFFICE / SALON
4737 N. CLARK ST., UNIT 1-N
 CHICAGO, IL 60640

JAMESON.

FOR LEASE



Space was previously used as a salon and is approx. 1000 sq. ft. with available garage parking. Space can be combined with 4743 Clark, Unit 1S for total of 1,954 sq.ft. Owner will deliver Vanilla Box or Modified Vanilla Box for strong tenants. Located along newly streetscaped section of Clark street, adjacent to Chase Park.

PROPERTY HIGHLIGHTS

- ▀ Currently Built Out as Salon
- ▀ Additional Plumbing
- ▀ Garage Parking Available
- ▀ Awning Located on Store

AREA HIGHLIGHTS

- ▀ Newly street scaped Clark Street
- ▀ Across from Chase Park
- ▀ Near Uptown, Andersonville & Ravenswood, communities

AREA TENANTS

- ▀ Walgreens
- ▀ Staples
- ▀ North Community Bank
- ▀ Carol's Bar & Grill
- ▀ Chase Park
- ▀ Play Soccer
- ▀ Crafty Beaver Hardware
- ▀ Black Ensemble Theate

TRANSPORTATION HIGHLIGHTS

- ▀ Lawrence Red Line L Stop
- ▀ 24HR Clark Street Bus

SIZE	1,000 sf (up to 1,954 sf)	ZONED	B3-2
TAXES		CAM	\$1.50 / sf
LEASE RATE	\$18.00 / SF/yr NNN	SALE	\$169,000

STATISTICS	0.25 Miles	0.5 Miles	1 Mile
Population	5,104	19,968	71,620
Households	2,676	10,445	36,420
Average HHI	\$68,683	\$70,237	\$71,839

JAMESON COMMERCIAL REAL ESTATE
 425 West North Avenue | Chicago, IL 60610
 www.jamesoncommercial.com

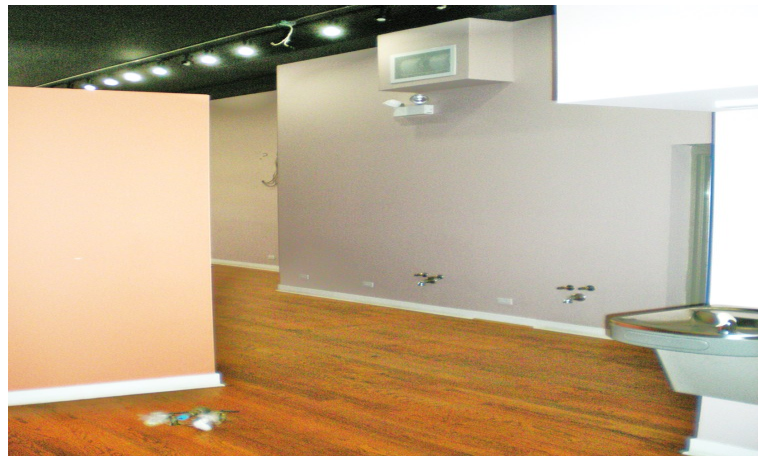
■ **CHRIS IRWIN** // Senior Vice President, Retail Sales & Leasing
 (P) 312.335.3219
 chris.irwin@jameson.com

■ **KEELY SELKO** // Broker Associate
 (P) 773.220.0850
 kselko@jameson.com

©Jameson Real Estate LLC. All information provided herein is from sources deemed reliable. No representation is made as to the accuracy thereof & it is submitted subject to errors, omissions, changes, prior sale or lease, or withdrawal without notice. Projections, opinions, assumptions & estimates are presented as examples only & may not represent actual performance. Consult tax & legal advisors to perform your own investigation.

ADDITIONAL PHOTOS

4737 N. CLARK ST., UNIT 1-N
UPTOWN, CHICAGO, IL 60640

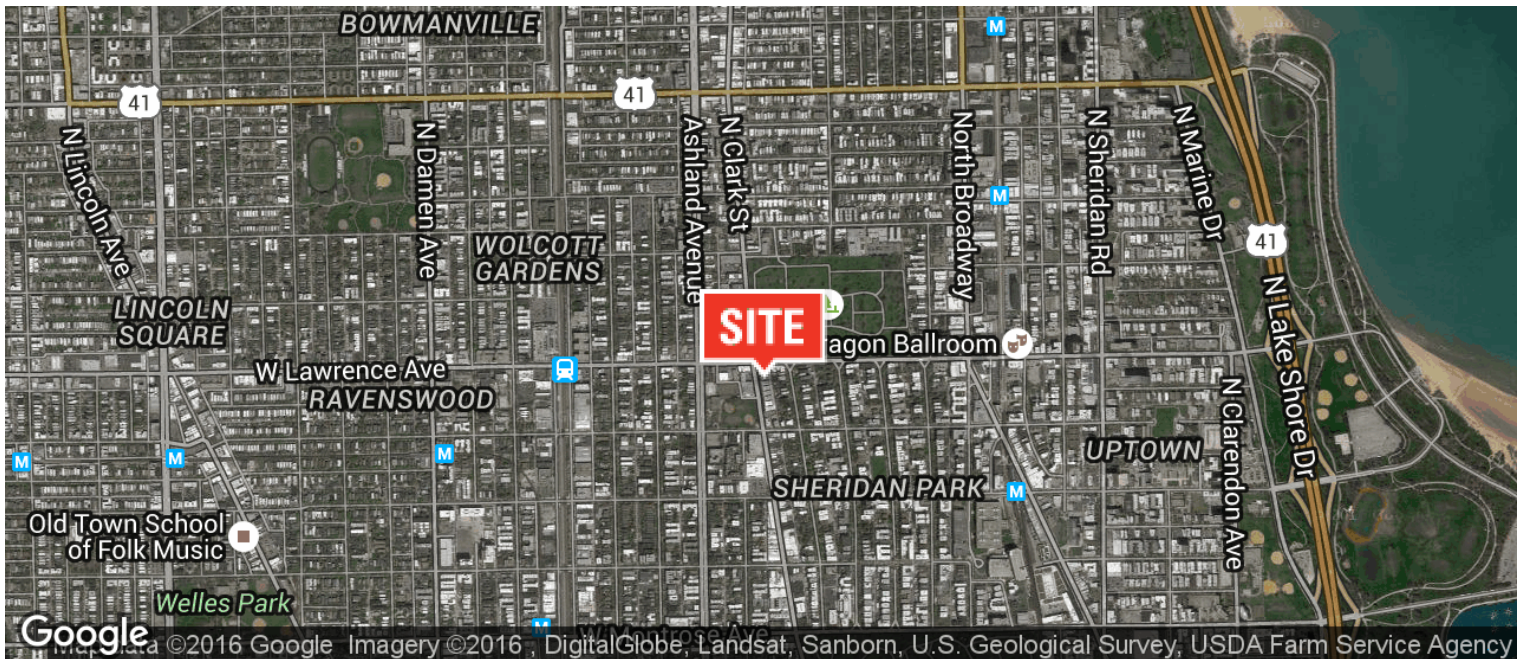
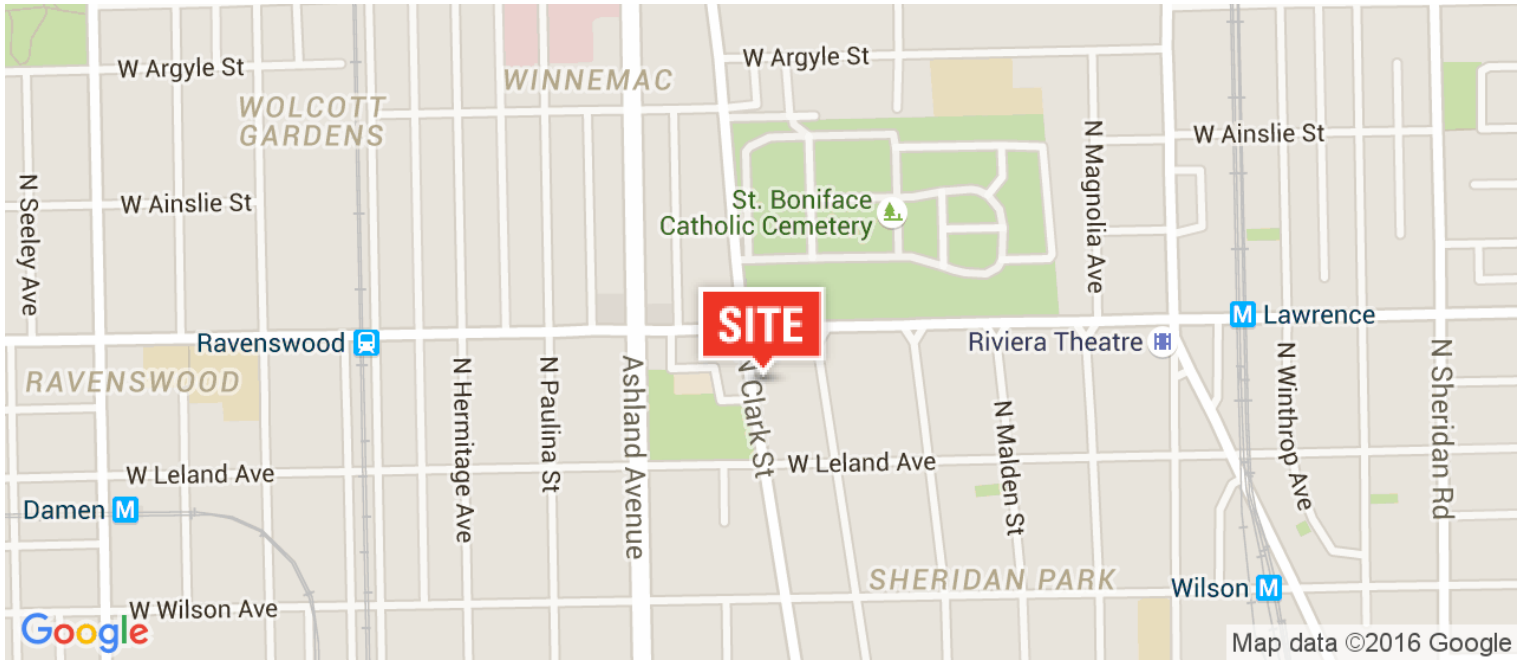


JAMESON COMMERCIAL REAL ESTATE
425 West North Avenue | Chicago, IL 60610
jamesoncommercial.com

©Jameson Real Estate LLC. All information provided herein is from sources deemed reliable. No representation is made as to the accuracy thereof & it is submitted subject to errors, omissions, changes, prior sale or lease, or withdrawal without notice. Projections, opinions, assumptions & estimates are presented as examples only & may not represent actual performance. Consult tax & legal advisors to perform your own investigation.

AERIAL & STREET DETAIL

4737 N. CLARK ST., UNIT 1-N
 UPTOWN, CHICAGO, IL 60640

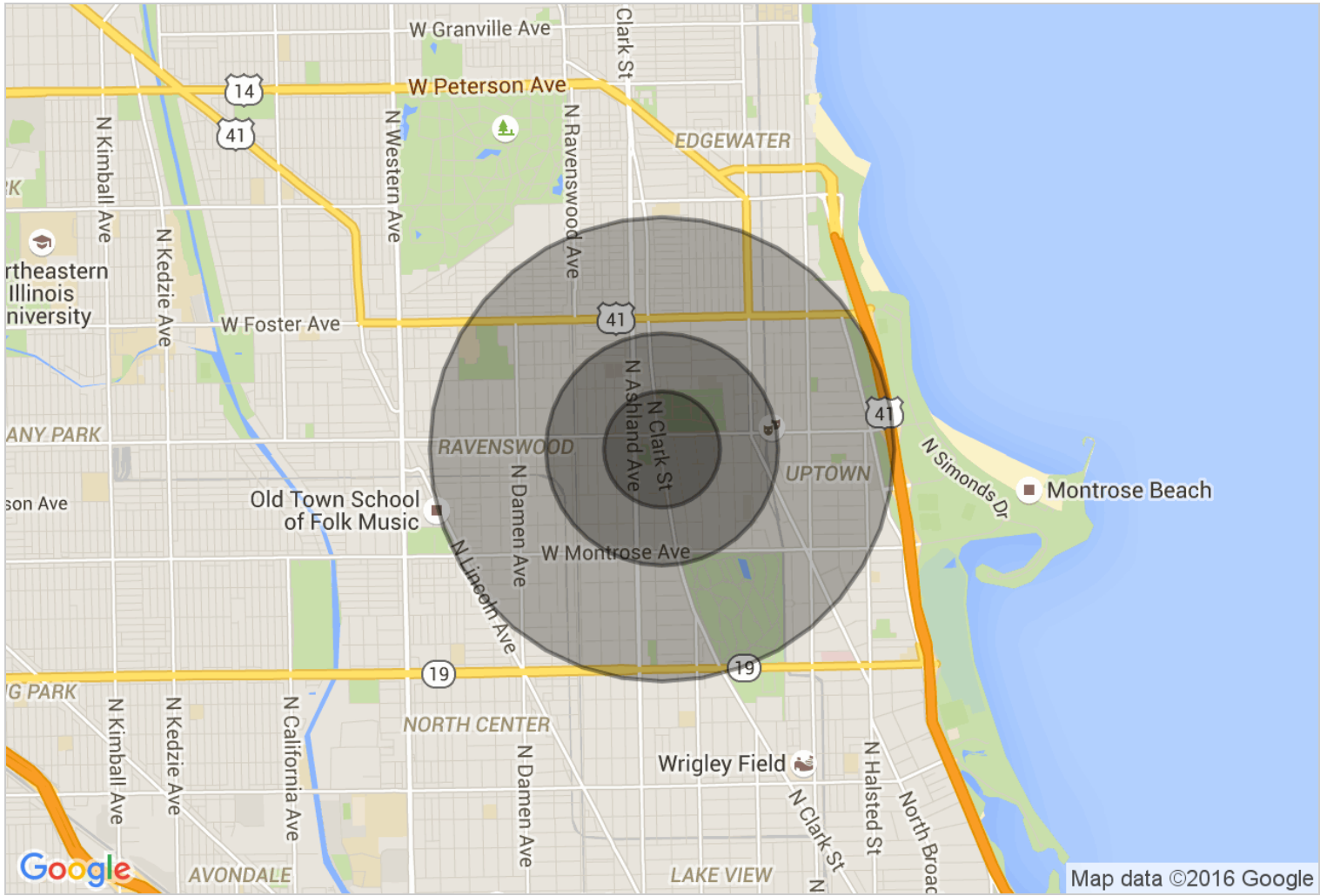


JAMESON COMMERCIAL REAL ESTATE
 425 West North Avenue | Chicago, IL 60610
jamesoncommercial.com

©Jameson Real Estate LLC. All information provided herein is from sources deemed reliable. No representation is made as to the accuracy thereof & it is submitted subject to errors, omissions, changes, prior sale or lease, or withdrawal without notice. Projections, opinions, assumptions & estimates are presented as examples only & may not represent actual performance. Consult tax & legal advisors to perform your own investigation.

DEMOGRAPHICS MAP

4737 N. CLARK ST., UNIT 1-N
 UPTOWN, CHICAGO, IL 60640



2010 STATISTICS	0.25 Miles	0.5 Miles	1 Mile
Total Population	5,104	19,968	71,620
Total Number of Households	2,676	10,445	36,420
Average Household Income	\$68,683	\$70,237	\$71,839
Median Age	34.7	34.8	35.1

JAMESON COMMERCIAL REAL ESTATE
 425 West North Avenue | Chicago, IL 60610
jamesoncommercial.com

©Jameson Real Estate LLC. All information provided herein is from sources deemed reliable. No representation is made as to the accuracy thereof & it is submitted subject to errors, omissions, changes, prior sale or lease, or withdrawal without notice. Projections, opinions, assumptions & estimates are presented as examples only & may not represent actual performance. Consult tax & legal advisors to perform your own investigation.

DEMOGRAPHICS REPORT

4737 N. CLARK ST., UNIT 1-N
UPTOWN, CHICAGO, IL 60640

JAMESON.

DEMOGRAPHICS	0.25 Miles	0.5 Miles	1 Mile
TOTAL POPULATION	5,104	19,968	71,620
MEDIAN AGE	34.7	34.8	35.1
MEDIAN AGE (MALE)	35.5	35.7	35.8
MEDIAN AGE (FEMALE)	34.5	34.4	34.5
TOTAL HOUSEHOLDS	0.25 Miles	0.5 Miles	1 Mile
TOTAL HOUSEHOLDS	2,676	10,445	36,420
# OF PERSONS PER HH	1.9	1.9	2.0
AVERAGE HH INCOME	\$68,683	\$70,237	\$71,839
AVERAGE HOUSE VALUE	\$416,318	\$418,611	\$451,221
POPULATION	0.25 Miles	0.5 Miles	1 Mile
TOTAL POPULATION - White	3,476	13,385	46,348
TOTAL POPULATION - Black	533	2,021	9,311
TOTAL POPULATION - Hispanic	933	3,868	12,032
TOTAL POPULATION - Asian	486	1,953	7,517
TOTAL POPULATION - Hawaiian	0	0	151
TOTAL POPULATION - Indian	8	17	123
TOTAL POPULATION - Other	560	2,341	6,735

JAMESON COMMERCIAL REAL ESTATE
425 West North Avenue | Chicago, IL 60610
jamesoncommercial.com

©Jameson Real Estate LLC. All information provided herein is from sources deemed reliable. No representation is made as to the accuracy thereof & it is submitted subject to errors, omissions, changes, prior sale or lease, or withdrawal without notice. Projections, opinions, assumptions & estimates are presented as examples only & may not represent actual performance. Consult tax & legal advisors to perform your own investigation.