



PRIME STRIP DISTRICT RETAIL/OFFICE SPACE AVAILABLE

2815 PENN

2815 PENN AVENUE, PITTSBURGH, PA 15222



Presented By:

Paige Myers

412.545.5000 x204

paige@totumrealtyadvisors.com

Kevin Riley

412.745.5000 x200

kevin@totumrealtyadvisors.com

401 Liberty Avenue Pittsburgh, PA 15222 // 412.745.5000 // totumrealtyadvisors.com

2815 PENN

2815 PENN AVENUE, PITTSBURGH, PA 15222



PROPERTY SUMMARY



OFFERING SUMMARY

Lease Rate:	\$26.66 SF/Year
Building Size:	30,000 SF
Available SF:	2,630 - 9,000 SF
Lot Size:	0.26 Acres
Year Built:	1900
Renovated:	2021

PROPERTY OVERVIEW

Located along "Robotics Row" in Pittsburgh's iconic Strip District neighborhood, the former Franklin Savings and Trust Building is currently undergoing a complete renovation. This mixed-use property will be comprised of high-exposure, versatile commercial space on the street and mezzanine levels and topped off with luxury residential on the top three floors and Pittsburgh Winery on the basement level.

PROPERTY HIGHLIGHTS

- Built-to-suit office / retail / tech space opportunity
- Great street-level visibility
- Dedicated entrance
- Plentiful natural light throughout
- Robust demographic area
- On-site parking
- Located along Port Authority Bus Routes 88, 91, 54 & less than one block from the 86 and 87 Routes

Presented By:

Paige Myers

412.545.5000 x204

paige@totumrealtyadvisors.com

401 Liberty Avenue Pittsburgh, PA 15222 // 412.745.5000 // totumrealtyadvisors.com

Kevin Riley

412.745.5000 x200

kevin@totumrealtyadvisors.com

2815 PENN

2815 PENN AVENUE, PITTSBURGH, PA 15222



ADDITIONAL PHOTOS



Presented By:

Paige Myers

412.545.5000 x204

paige@totumrealtyadvisors.com

401 Liberty Avenue Pittsburgh, PA 15222 // 412.745.5000 // totumrealtyadvisors.com

Kevin Riley

412.745.5000 x200

kevin@totumrealtyadvisors.com

2815 PENN

2815 PENN AVENUE, PITTSBURGH, PA 15222



ADDITIONAL PHOTOS



Presented By:

Paige Myers

412.545.5000 x204

paige@totumrealtyadvisors.com

401 Liberty Avenue Pittsburgh, PA 15222 // 412.745.5000 // totumrealtyadvisors.com

Kevin Riley

412.745.5000 x200

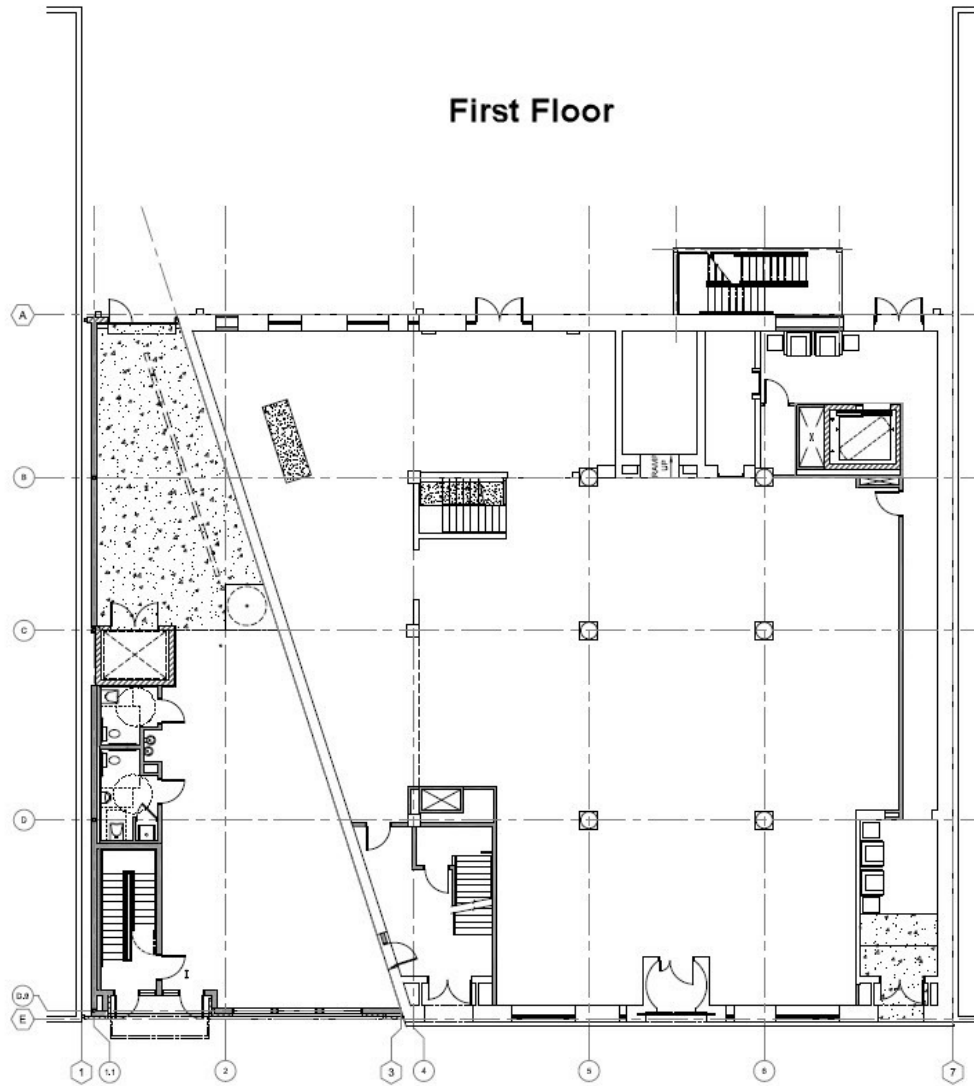
kevin@totumrealtyadvisors.com

2815 PENN

2815 PENN AVENUE, PITTSBURGH, PA 15222



PLAN



Add text here...

Presented By:

Paige Myers

412.545.5000 x204

paige@totumrealtyadvisors.com

401 Liberty Avenue Pittsburgh, PA 15222 // 412.745.5000 // totumrealtyadvisors.com

Kevin Riley

412.745.5000 x200

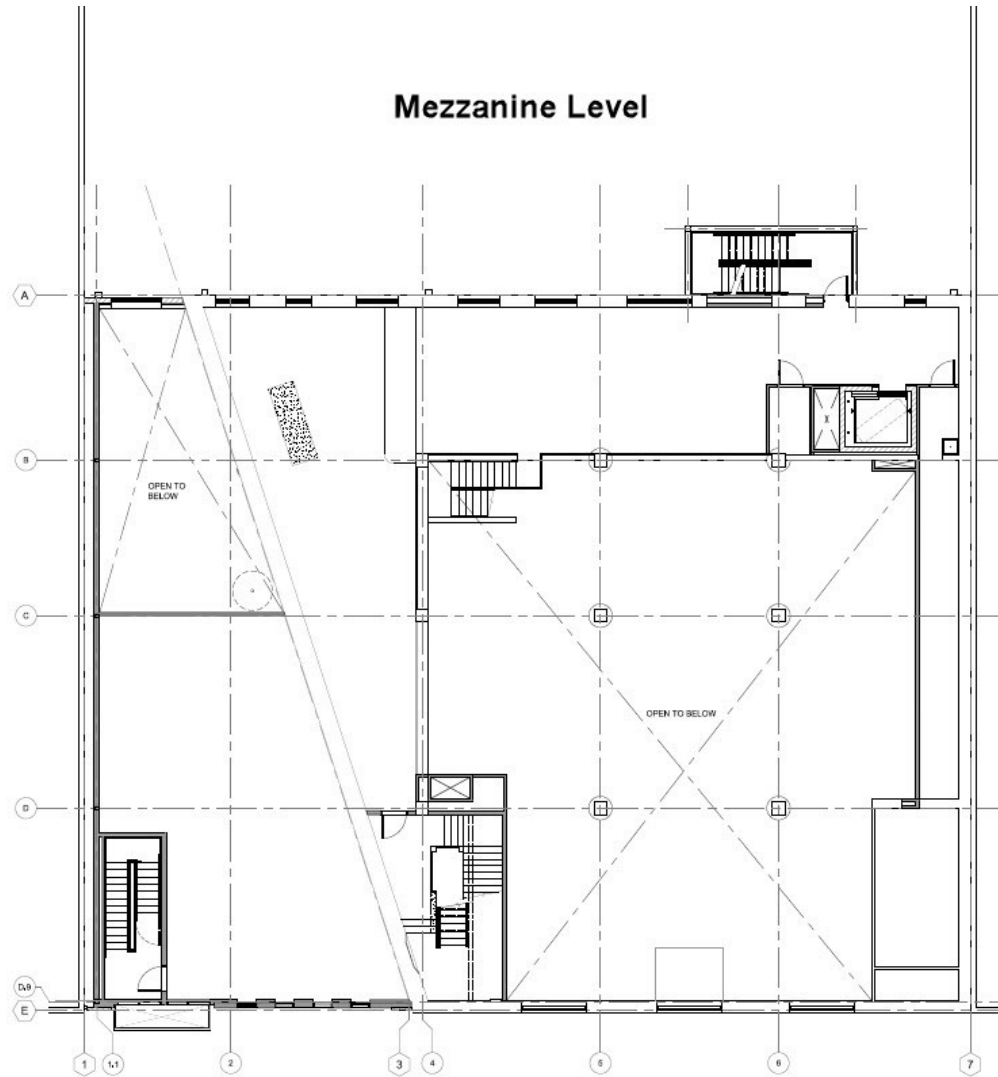
kevin@totumrealtyadvisors.com

2815 PENN

2815 PENN AVENUE, PITTSBURGH, PA 15222



PLAN



Add text here...

Presented By:

Paige Myers

412.545.5000 x204

paige@totumrealtyadvisors.com

401 Liberty Avenue Pittsburgh, PA 15222 // 412.745.5000 // totumrealtyadvisors.com

Kevin Riley

412.745.5000 x200

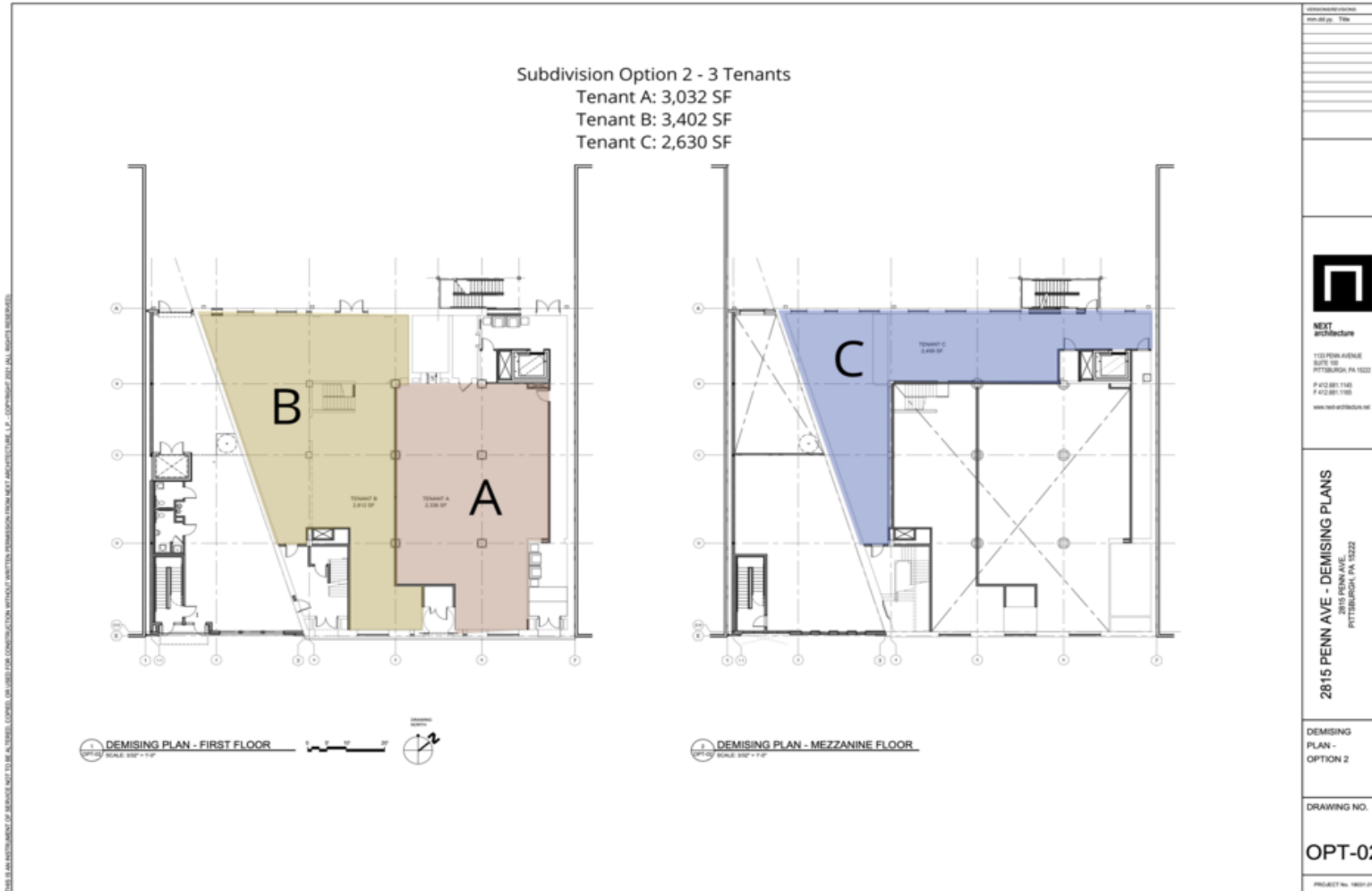
kevin@totumrealtyadvisors.com

2815 PENN

2815 PENN AVENUE, PITTSBURGH, PA 15222



PLAN



Add text here...

Presented By:

Paige Myers

412.545.5000 x204

paige@totumrealtyadvisors.com

401 Liberty Avenue Pittsburgh, PA 15222 // 412.745.5000 // totumrealtyadvisors.com

Kevin Riley

412.745.5000 x200

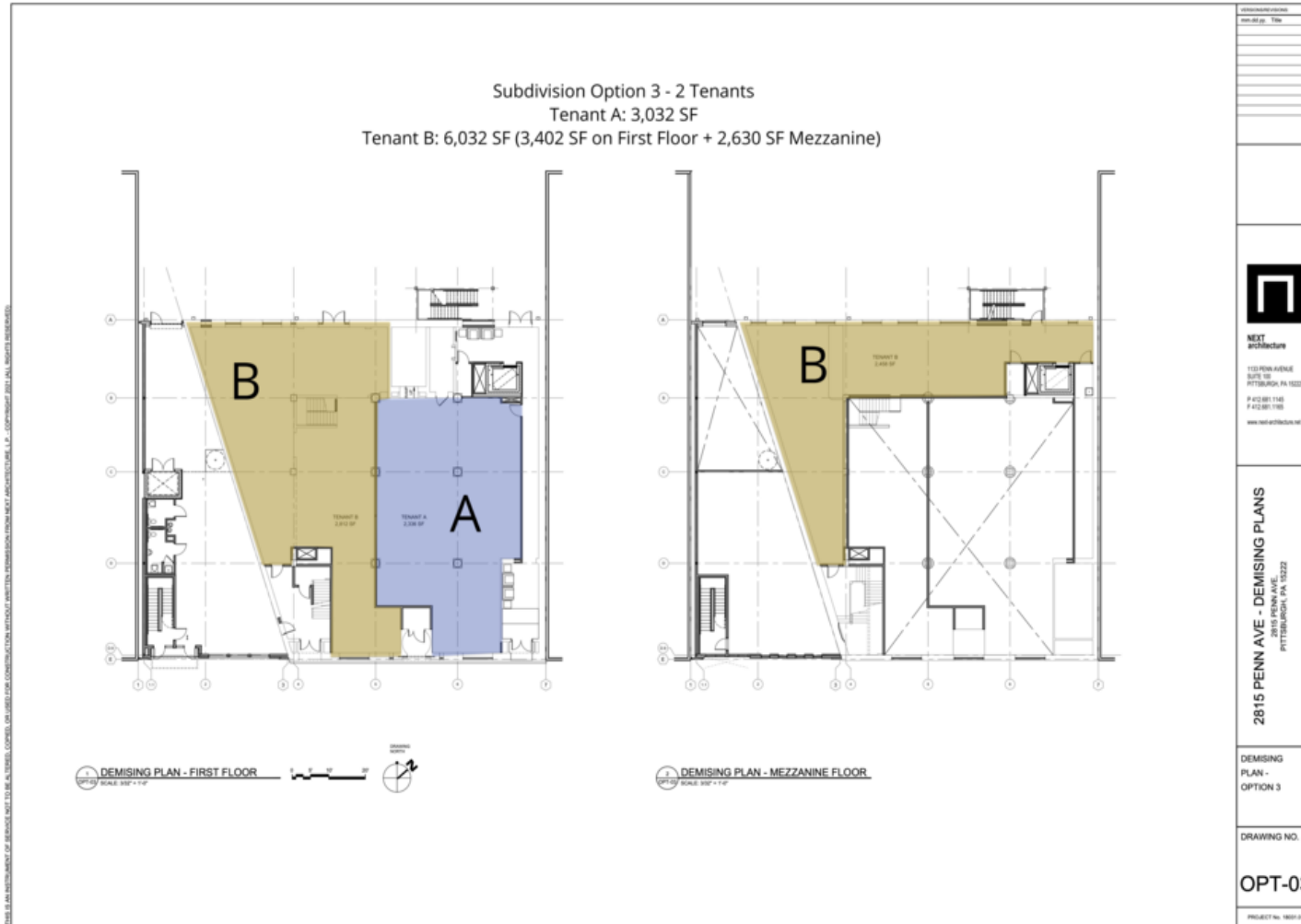
kevin@totumrealtyadvisors.com

2815 PENN

2815 PENN AVENUE, PITTSBURGH, PA 15222



PLAN



Add text here...

Presented By:

Paige Myers

412.545.5000 x204

paige@totumrealtyadvisors.com

401 Liberty Avenue Pittsburgh, PA 15222 // 412.745.5000 // totumrealtyadvisors.com

Kevin Riley

412.745.5000 x200

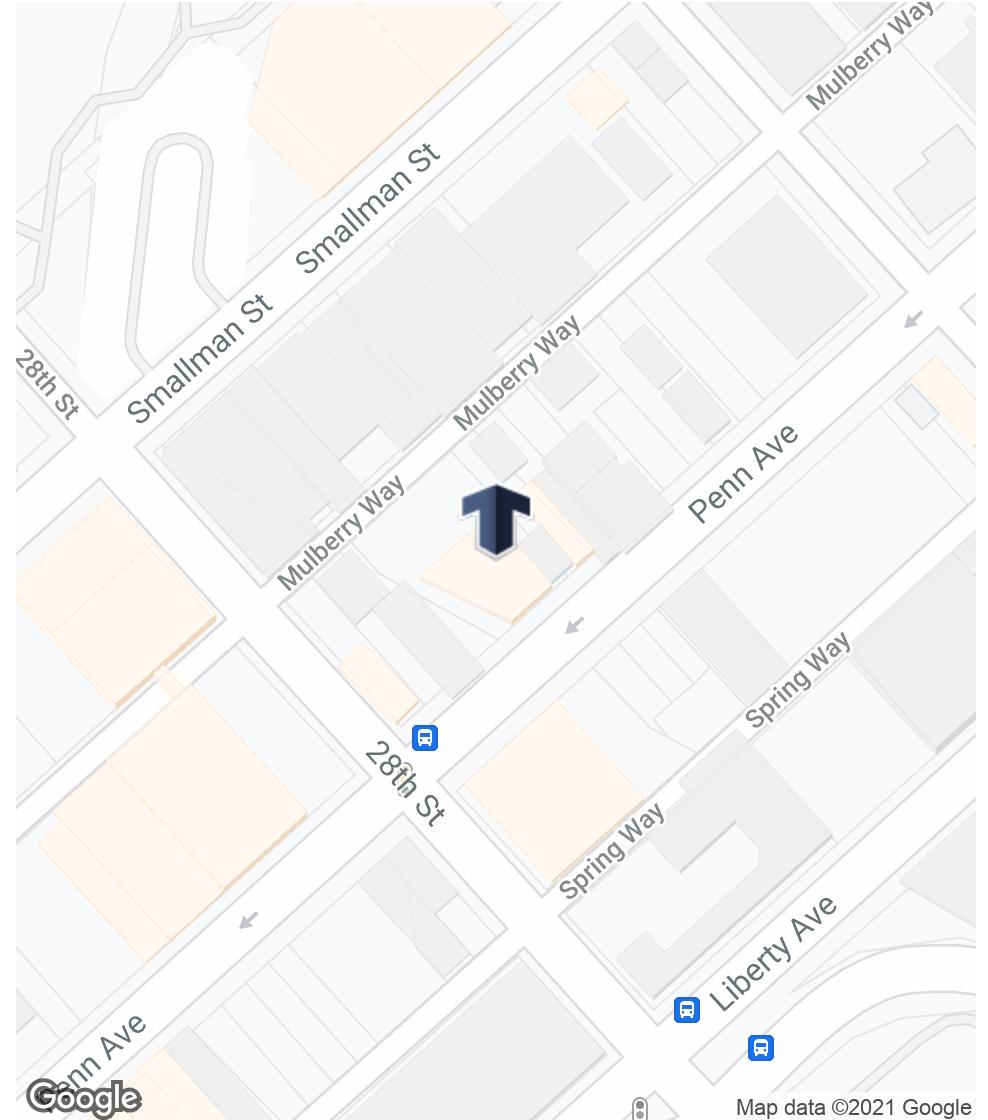
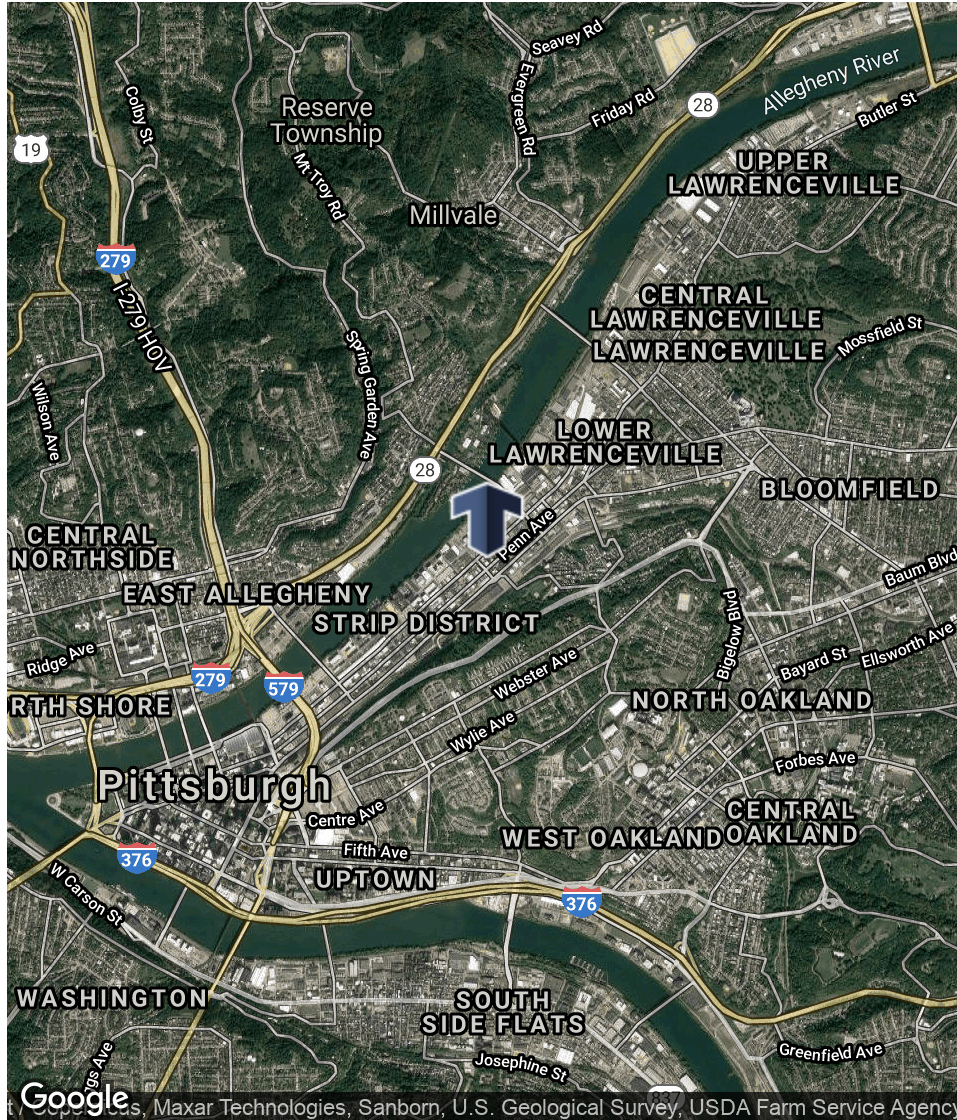
kevin@totumrealtyadvisors.com

2815 PENN

2815 PENN AVENUE, PITTSBURGH, PA 15222



LOCATION MAP



Presented By:

Paige Myers

412.545.5000 x204

paige@totumrealtyadvisors.com

401 Liberty Avenue Pittsburgh, PA 15222 // 412.745.5000 // totumrealtyadvisors.com

Kevin Riley

412.745.5000 x200

kevin@totumrealtyadvisors.com

