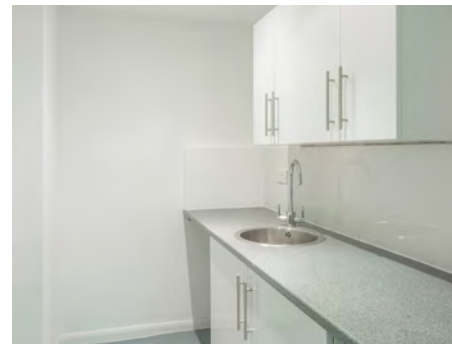


OFFICE SUITES TO LET WITHIN A STYLISH BUSINESS VILLAGE

Blythe Road
London W14 0HN
www.berghemmews.co.uk





BERGHEM MEWS

Occupiers include Deezer, Sparks AGI, Wildstone Media, Quiet Revolution, Metafour, HoneyPot Charity, Resilient Capital, Accenture and Network, part of the Virgin Group of Companies.

Berghem Mews is a purpose built multi unit office development around a central courtyard. There are 24 individual office and studio units totalling approximately 45,000 sq ft (4,200 sq m) with a substantial underground secure car park with **69 spaces**. 24 hour security is provided and many of the units are self contained.

Availability

Individual units are available as either floors or self contained suites and buildings. Units vary from 350 sq ft to 5,000 sq ft and may be combined for larger requirements. Contact the agents for up to date availability.

Car Parking

The scheme has a large underground car park with areas for bikes and scooters. In addition the local authority offer business parking permits in the surrounding streets.

Fitness

The Printworks Healthclub & Spa is just off Blythe Road.

Amenities

- Comfort cooling and/or central heating
- Excellent natural light
- Open reach fibre to the scheme
- Perimeter trunking
- Shower
- 24 hour security system
- Kitchenettes
- CCTV
- Self contained suites
- Landscaped courtyard with seating
- Bike racks
- 69 car park spaces
- 24 hour access
- Good local eateries



High Quality Office Suites — On-Site Parking — 24 Hour Security

BERGHEM MEWS

Berghem Mews is well located in Brook Green W14 between Hammersmith and Kensington.

The development is on Blythe Road, with many cafés, shops, restaurants and delicatessens as well as a Tesco Superstore on Shepherd's Bush Road a short walk away. Westfield London shopping centre further enhances this area, and is served by London Overground connecting to Clapham Junction.

Tube services are available at Hammersmith (Piccadilly and District Lines plus the Circle and Hammersmith & City Lines to Paddington) and Shepherd's Bush (Central Line).



Terms

The offices are available on new flexible leases directly from the Freeholder. Energy Performance Certificates, plans and further information available from the Agents.



Misrepresentation Act. These particulars are intended only to give a description of the property and do not form the basis of a contract or any part thereof. These descriptions and all other information are believed to be correct but their accuracy is in no way guaranteed. [March 2017]