

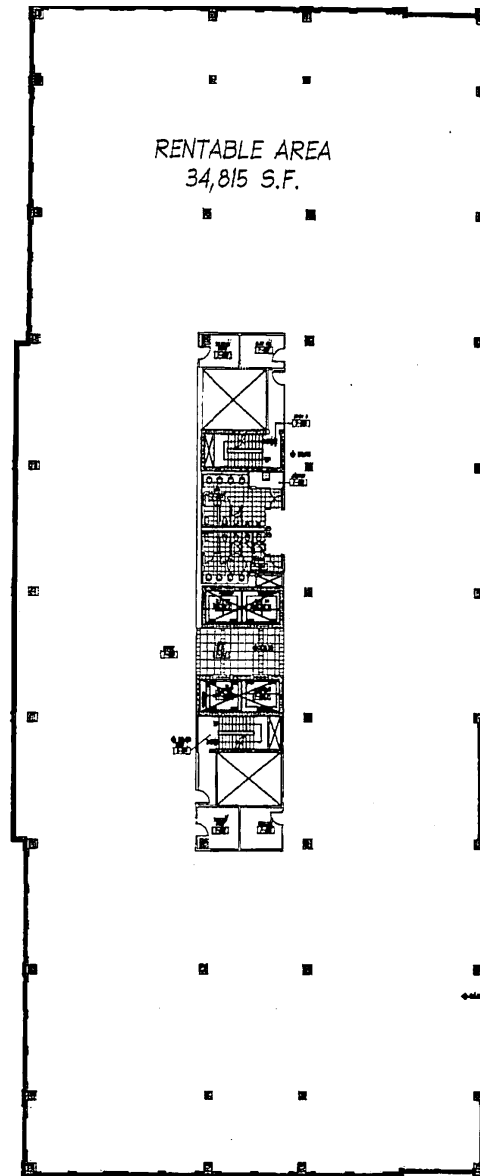


FOR LEASE

650 N. Exeter Street, Baltimore, MD 21202

9th Floor

34,815 RSF



For more information, contact:

L. Bruce Matthai

+1 410 347 7539

bruce.matthai@cushwake.com

Brian P. Wyatt

+1 410 347 7804

brian.wyatt@cushwake.com

100 Light Street, Suite 1400
Baltimore, MD 21202

T: +1 410 752 4285

F: +1 410 576 9031

cushmanwakefield.com

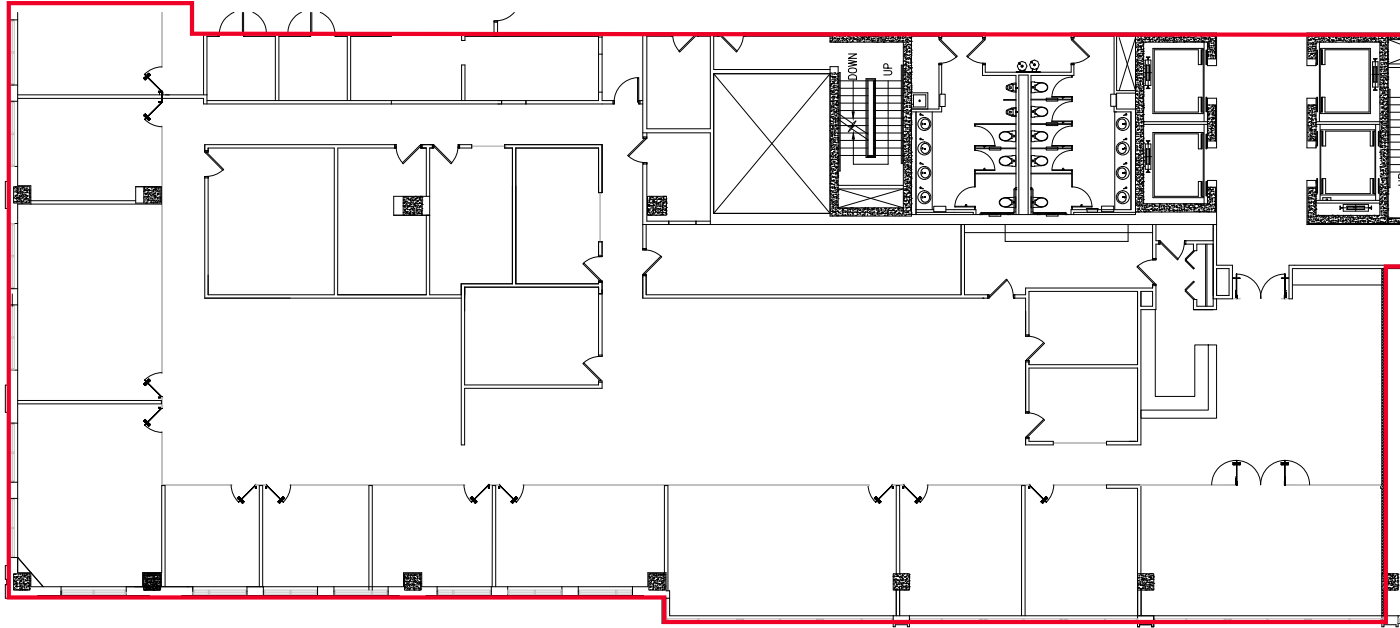


FOR LEASE

650 N. Exeter Street, Baltimore, MD 21202

10th Floor

10,290 RSF



For more information, contact:

L. Bruce Matthai

+1 410 347 7539

bruce.matthai@cushwake.com

Brian P. Wyatt

+1 410 347 7804

brian.wyatt@cushwake.com

100 Light Street, Suite 1400
Baltimore, MD 21202

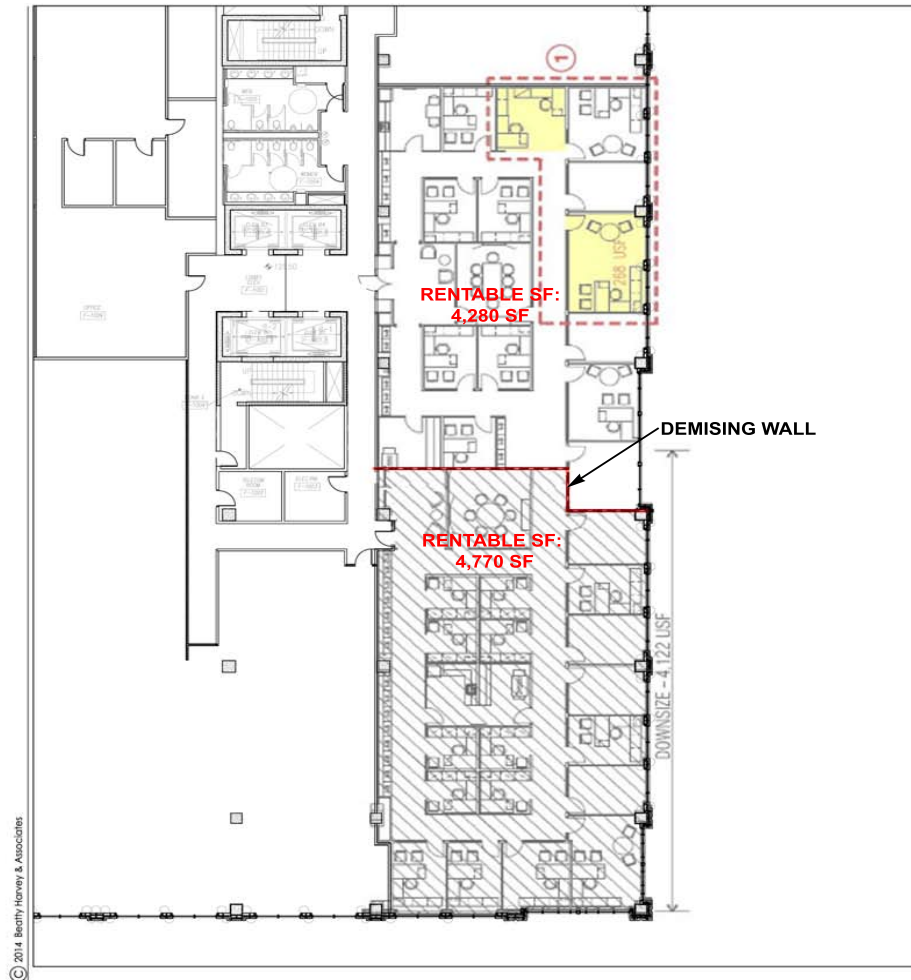
T: +1 410 752 4285

F: +1 410 576 9031

cushmanwakefield.com



FOR LEASE
650 N. Exeter Street, Baltimore, MD 21202
10th Floor
4,770 RSF



© 2014 Betty Harvey & Associates



project title:
650_EXETOR_STREET

project no.:

drawing title:
10TH_LEVEL

scale: 3/32"=1'-0"
date: 06/09/15

sheet no.
LOD

For more information, contact:

L. Bruce Matthai
+1 410 347 7539
bruce.matthai@cushwake.com

Brian P. Wyatt
+1 410 347 7804
brian.wyatt@cushwake.com

100 Light Street, Suite 1400
Baltimore, MD 21202

T: +1 410 752 4285
F: +1 410 576 9031

cushmanwakefield.com