

FOR SALE

# PRIME COMMERCIAL DEVELOPMENT PARCELS

200 SOUTH WOOSTER AVE , DOVER, OHIO

RETAIL



## PROPERTY INFO

- + Prime Commercial Development Parcels
- + All utilities at street
- + Zoning: M-2
- + 0.95 AC - 3.14 AC Available
- + 861' of Frontage
- + Rail access
- + Population of 37,646 in a 5 mile radius
- + **Sale Price: \$785,000.00 (\$250,000/acre)**
- + [Click here to view zoning map](#)

## CONTACT US

### FRED HERRERA

Senior Vice President  
+1 216 363 6408  
[fred.herrera@cbre.com](mailto:fred.herrera@cbre.com)

### JENNA GAUNTNER

Associate  
+1 216 363 6450  
[jenna.gauntner@cbre.com](mailto:jenna.gauntner@cbre.com)

### CBRE, INC.

950 Main Avenue  
Suite 200  
Cleveland, OH 44113

[www.cbre.us/cleveland](http://www.cbre.us/cleveland)

**CBRE**

FOR SALE

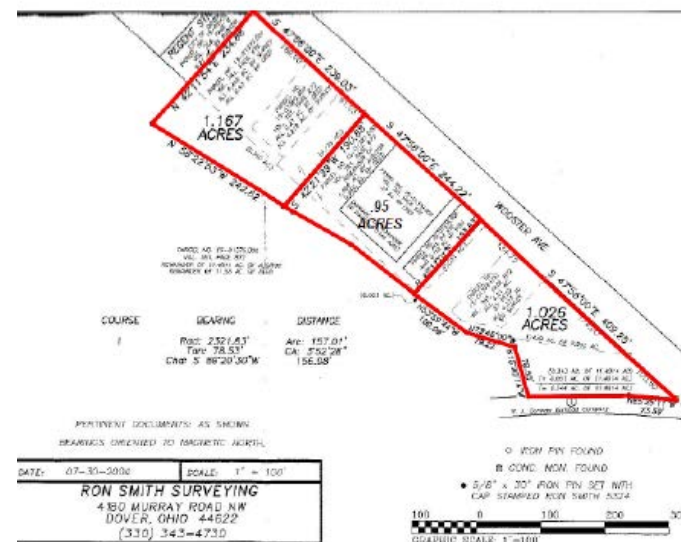
# PRIME COMMERCIAL DEVELOPMENT PARCELS

200 SOUTH WOOSTER AVE, DOVER, OHIO

RETAIL

## DEMOGRAPHICS

		1 MILE	3 MILES	5 MILES
<b>POPULATION</b>	2018 Population - Current Year Estimate	6,927	28,530	37,646
	2023 Population - Five Year Projection	6,870	28,340	37,478
	2010 Population - Census	6,988	28,691	37,659
	2018 Employees	5,219	17,026	21,618
<b>HOUSEHOLDS</b>	2018 Households - Current Year Estimate	2,811	11,872	15,753
	2023 Households - Five Year Projection	2,797	11,825	15,731
	2018 Median Home Value	\$104,064	\$120,886	\$128,113
	2018 Average Household Size	2.40	2.34	2.34
<b>INCOME</b>	2018 Average Household Income	\$53,174	\$58,976	\$62,483
	2023 Average Household Income	\$62,212	\$69,352	\$73,505
	2018 Median Household Income	\$44,297	\$45,646	\$48,604
	2023 Median Household Income	\$51,325	\$52,549	\$55,247



## CONTACT US

### FRED HERRERA

Senior Vice President  
+1 216 363 6408  
fred.herrera@cbre.com

### JENNA GAUNTNER

Associate  
+1 216 363 6450  
jenna.gauntner@cbre.com

© 2019 CBRE, Inc. This information has been obtained from sources believed reliable. We have not verified it and make no guarantee, warranty or representation about it. Any projections, opinions, assumptions or estimates used are for example only and do not represent the current or future performance of the property. You and your advisors should conduct a careful, independent investigation of the property to determine to your satisfaction the suitability of the property for your needs. Photos herein are the property of their respective owners and use of these images without the express written consent of the owner is prohibited. CBRE and the CBRE logo are service marks of CBRE, Inc. and/or its affiliated or related companies in the United States and other countries. All other marks displayed on this document are the property of their respective owners.

[www.cbre.us/cleveland](http://www.cbre.us/cleveland)

**CBRE**