



The Point at Gate Parkway

 7720 Baymeadows Rd E, Jacksonville, FL 32256

SPACE AVAILABLE

CALL (904) 992.9000

ABOUT THE PROPERTY

The three-story The Point at Gate Parkway is strategically positioned in the heart of Jacksonville's booming Southside market. Located East of I-295 adjacent to the new home of IKEA Jacksonville, 1/4 mile south of J. Turner Butler Boulevard, this center offers business owners access to the city's office, residential and retail hot-spots.

DEMOGRAPHIC HIGHLIGHTS

	1 Mile	3 Mile	5 Mile
Total Population	3,903	43,690	127,647
Avg. Household Income	\$114,568	\$96,995	\$91,257
Number of Households	1,026	9,925	30,298

Building Size:

54,354 +/- sq.ft.

Divisible Space
Retail Units

1,000 - 7,500 sq.ft. +/-
Office Units

2,000 - 30,000 sq.ft. +/-

Annual Average Daily Traffic
Baymeadows Rd - 15,300
I-295/SR-9A - 105,000

Contact An Agent Today

Dave Gaglione

Leasing Agent
904.992.9000 ext. 1312
dave.g@ashproperties.com

7720 Baymeadows Rd E, Jacksonville, FL 32256

904.992.9000 | www.ashproperties.com | leasing@ashproperties.com



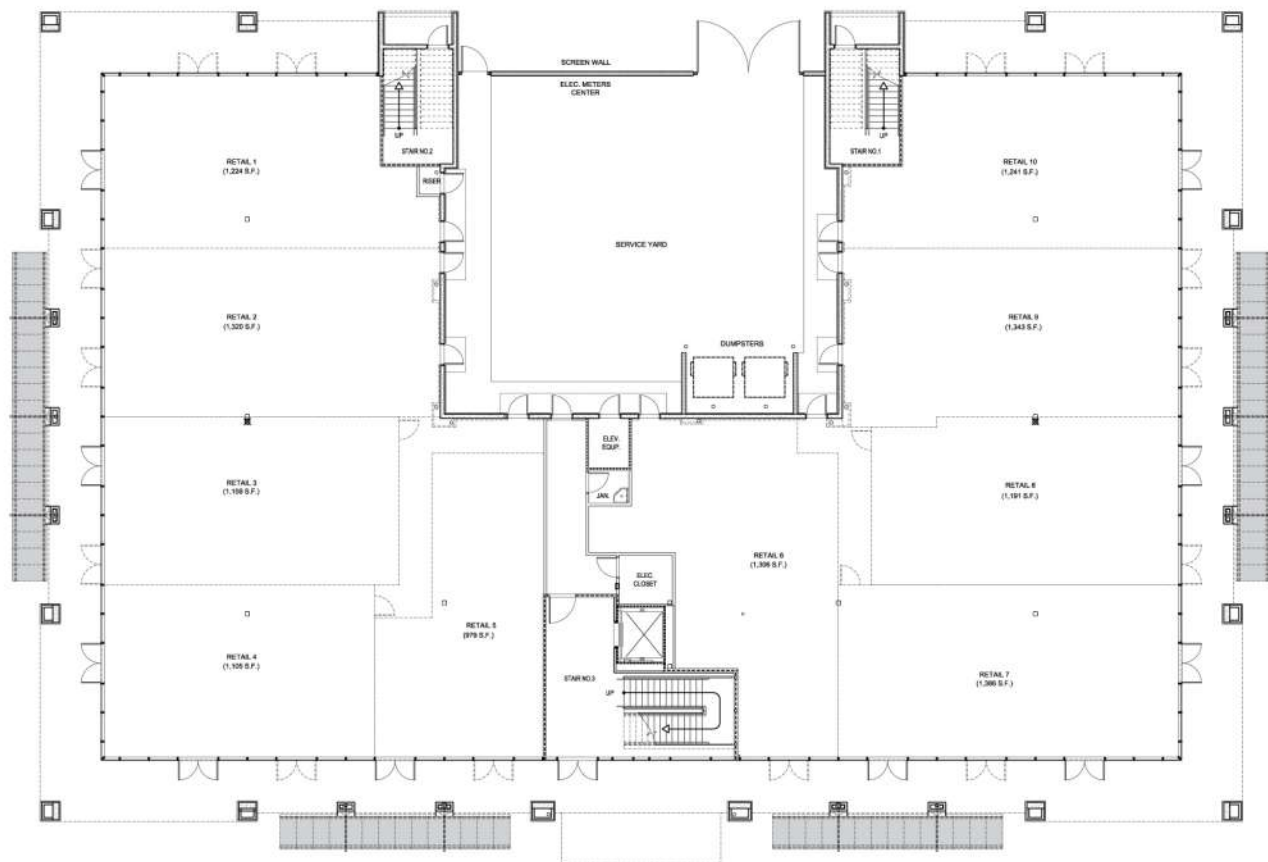
7720 Baymeadows Rd E, Jacksonville, FL 32256

904.992.9000 | www.ashproperties.com | leasing@ashproperties.com

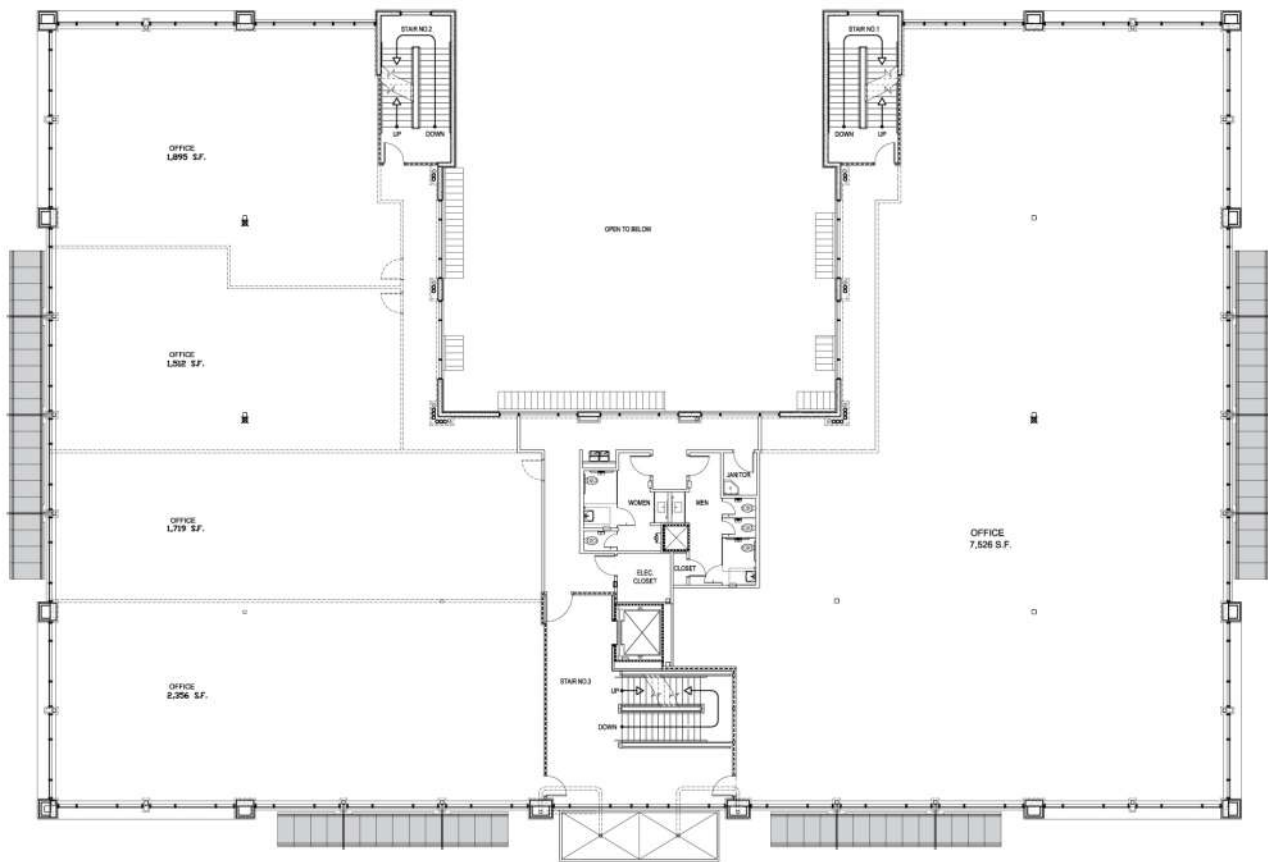


7720 Baymeadows Rd E, Jacksonville, FL 32256

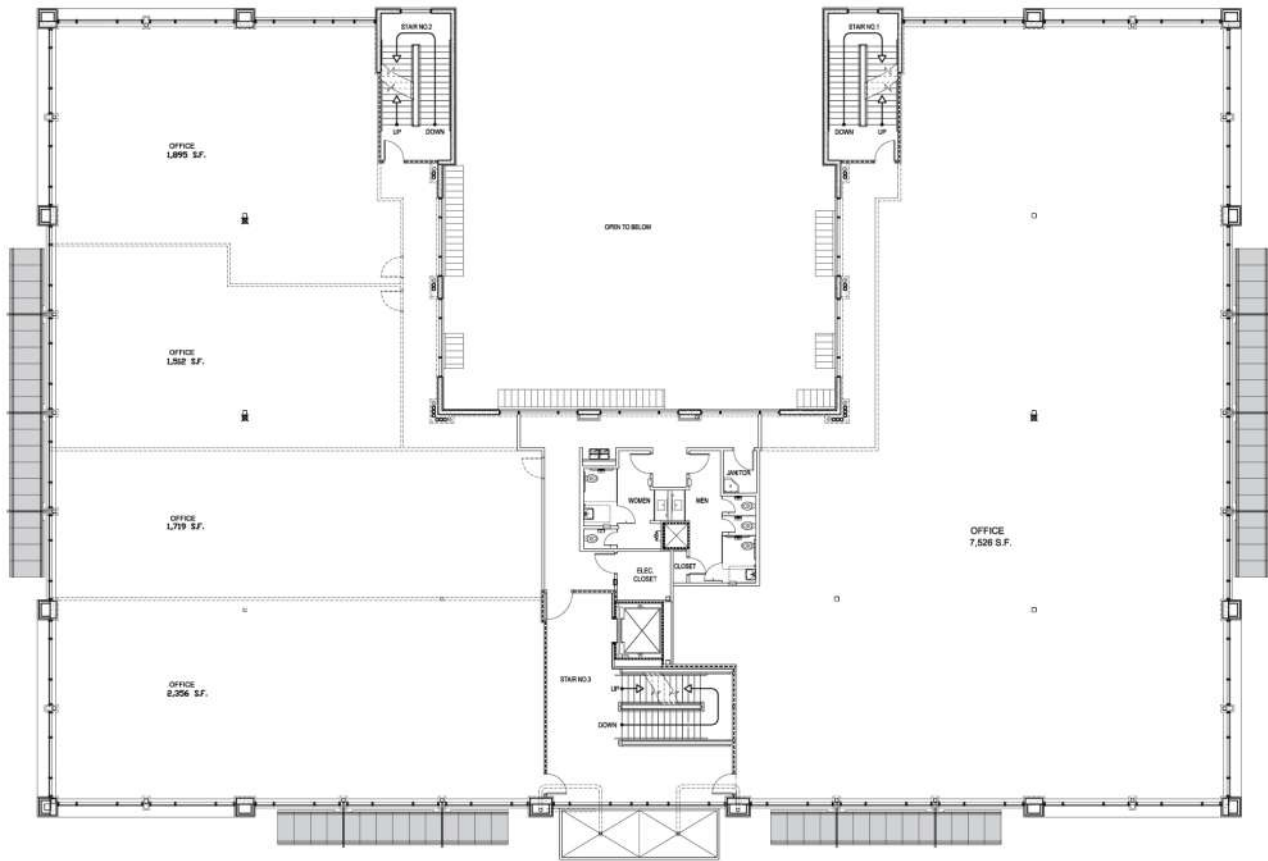
904.992.9000 | www.ashproperties.com | leasing@ashproperties.com



HYPOTHETICAL TENANT SUITES
1ST. FLOOR



HYPOTHETICAL TENANT SUITES
2ND. FLOOR



HYPOTHETICAL TENANT SUITES
3RD FLOOR