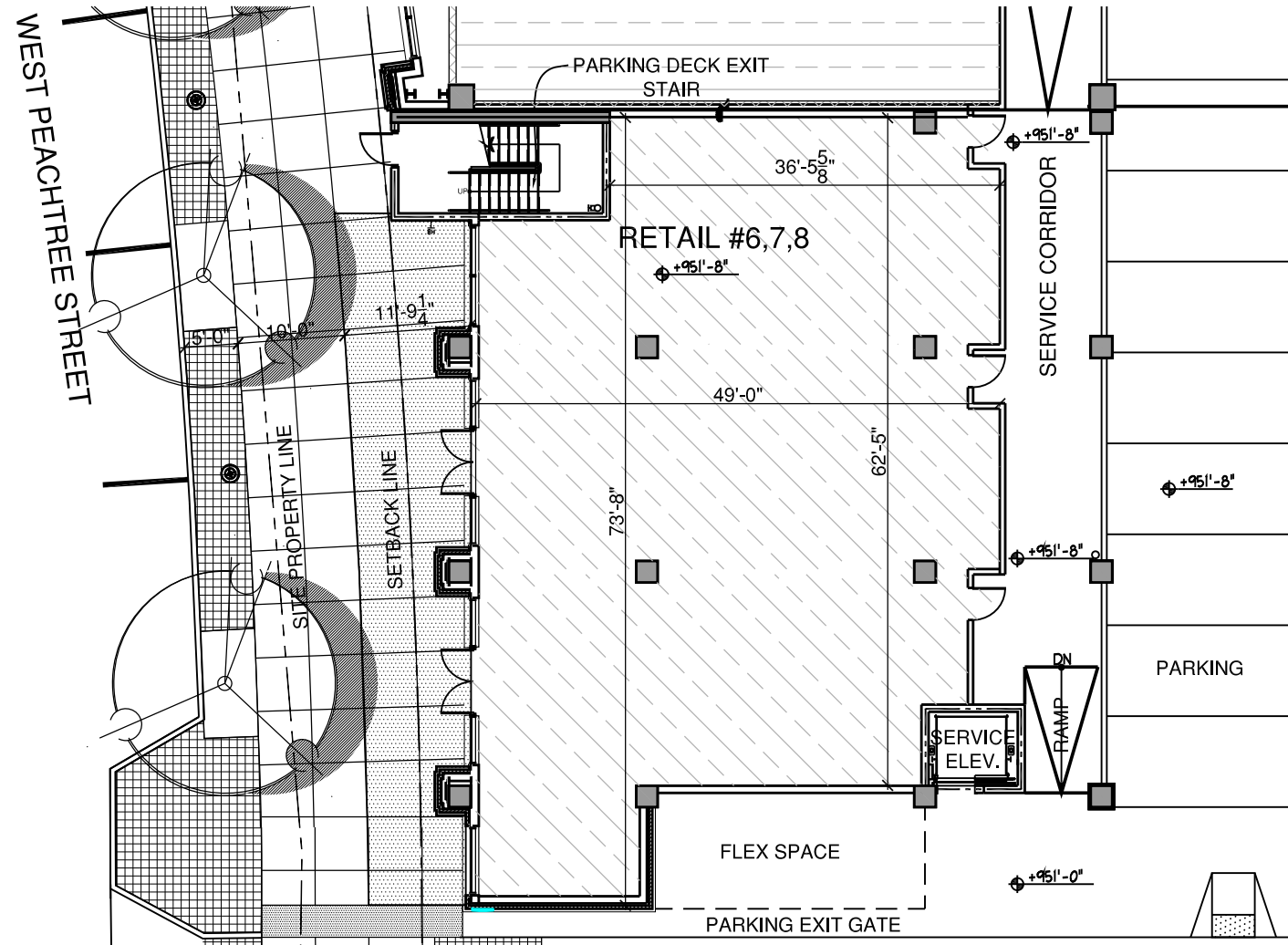


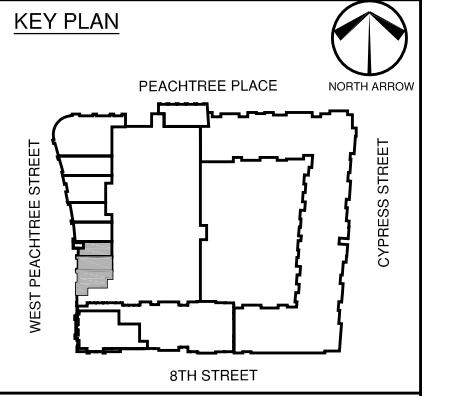
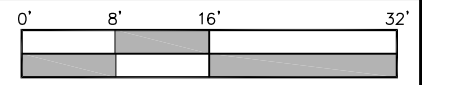
The information depicted by, described or contained in this document is preliminary and subject to change without notice.

THIS DRAWING IS THE PROPERTY OF RULE JOY TRAMMELL + RUBIO, LLC AND MAY NOT BE REPRODUCED WITHOUT WRITTEN CONSENT © 2014



LEGEND	
	SUPPLEMENTAL ZONE
	STEEL STRUCTURE ABOVE N/A
	PRECAST STRUCTURE ABOVE +/- 14'-1" AFF
	PRECAST STRUCTURE ABOVE +/- 11'-7" AFF
	CAST IN PLACE STRUCTURE ABOVE +/- 14'-1" AFF

AREA	=	3,165 SF
SUPPLEMENTAL ZONE	=	650 SF
FINISH FLOOR	=	951'-8"
RETAIL PARKING DURING OFFICE BUSINESS HOURS	=	55 SPACES (3/1,000)
RETAIL PARKING DURING OFFICE BUSINESS HOURS	=	200 SPACES (10.4/1,000)
TOTAL RETAIL SF:	+/-	18,359 SF
RETAIL PATRON PARKING ON LEVEL 1 & 2		
SERVICE AND LOADING ON LEVEL 3		



WEST ELEVATION

DATE:
MAR. 28, 2014

SPACE NO.:
RETAIL SPACE
NO. 6,7,8

33 Peachtree Place

Atlanta, Georgia



EXHIBIT "E" PREMISES LEASE OUTLINE DRAWING