

# DOWNTOWN CREATIVE OFFICE FOR LEASE

303 A STREET | SAN DIEGO | CA | 92101



**Steven Martini**

Lic # 01330605

619-243-8451

[smartini@qfcre.com](mailto:smartini@qfcre.com)

**Michael Wokuluk**

Lic #01972342

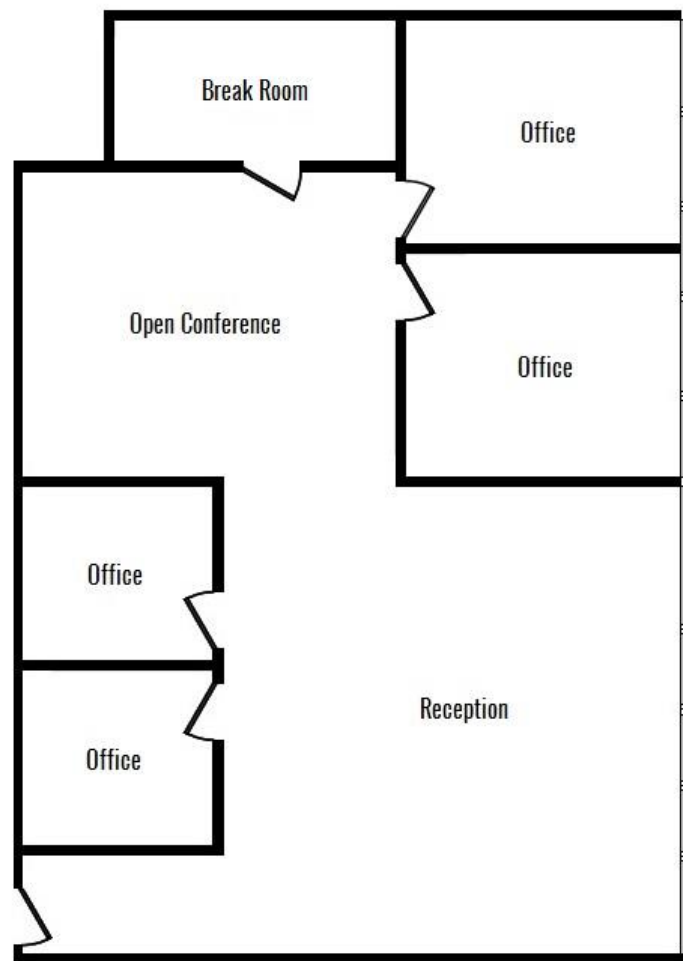
619-243-8459

[mwokuluk@qfcre.com](mailto:mwokuluk@qfcre.com)

1495 Pacific Highway, Suite 450, San Diego, CA 92101 | (619) 243—8454 | [www.qfcre.com](http://www.qfcre.com)

The information contained herein has been obtained from sources considered to be reliable, but no guarantee of its accuracy is made by this company. In addition, no representation is made respecting zoning, condition of title, dimensions, or any matters of a legal or environmental nature. Such matters should be referred to legal counsel for determination. Terms and conditions are subject to change without prior notice. Subject to errors and omissions.

# SUITE 302—SPACE PLAN



## SUITE 302 DETAILS

- ♦ ±2,052 SF consisting of four (4) offices, break room, reception/open creative space, and open conference area
- ♦ Beautiful third floor north facing Suite with floor to ceiling glass windows
- ♦ Excellent bright interior with natural light and Downtown views
- ♦ Located on corner of 3rd Avenue & A Street
- ♦ Short walk to dining, entertainment, city hall, Horton Plaza, and court houses
- ♦ Easy access to major freeways, airport, trolley, and Amtrak
- ♦ Landlord covers all utilities
- ♦ Potential for expansion if more square footage is required.

## LEASE RATE

- ♦ \$2.10/SF (full service)



# SUITE 302 INTERIOR PHOTOS



**Steven Martini**

Lic # 01330605

619-243-8451

[smartini@qfcre.com](mailto:smartini@qfcre.com)

**Michael Wokuluk**

Lic #01972342

619-243-8459

[mwokuluk@qfcre.com](mailto:mwokuluk@qfcre.com)

1495 Pacific Highway, Suite 450, San Diego, CA 92101 | (619) 243—8454 | [www.qfcre.com](http://www.qfcre.com)

The information contained herein has been obtained from sources considered to be reliable, but no guarantee of its accuracy is made by this company. In addition, no representation is made respecting zoning, condition of title, dimensions, or any matters of a legal or environmental nature. Such matters should be referred to legal counsel for determination. Terms and conditions are subject to change without prior notice. Subject to errors and omissions.



# SUITE 302 INTERIOR PHOTOS



**Steven Martini**

Lic # 01330605

619-243-8451

[smartini@qfcree.com](mailto:smartini@qfcree.com)

**Michael Wokuluk**

Lic #01972342

619-243-8459

[mwokuluk@qfcree.com](mailto:mwokuluk@qfcree.com)

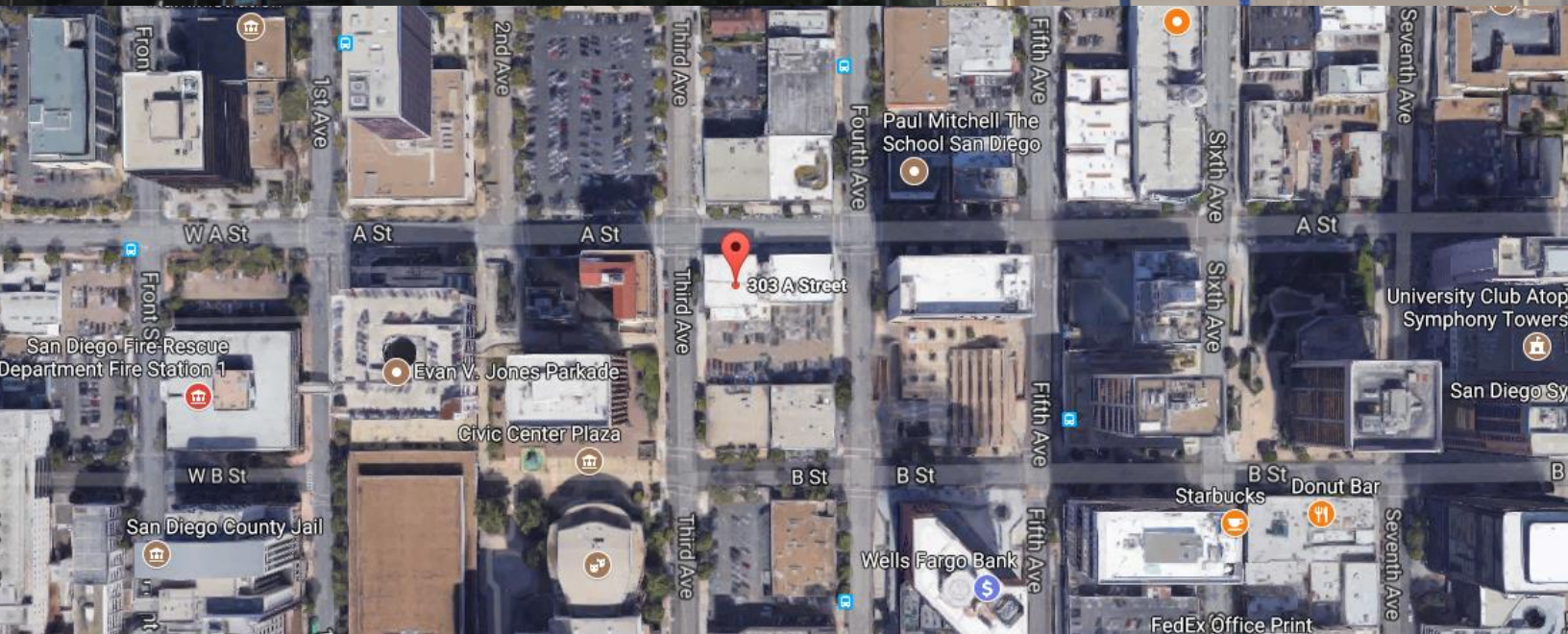
1495 Pacific Highway, Suite 450, San Diego, CA 92101 | (619) 243—8454 | [www.qfcree.com](http://www.qfcree.com)

The information contained herein has been obtained from sources considered to be reliable, but no guarantee of its accuracy is made by this company. In addition, no representation is made respecting zoning, condition of title, dimensions, or any matters of a legal or environmental nature. Such matters should be referred to legal counsel for determination. Terms and conditions are subject to change without prior notice. Subject to errors and omissions.





# 303 A Street Offices



**Steven Martini**

Civic Center Station  
Lic # 01330605

619-243-8451

[smartini@qfcree.com](mailto:smartini@qfcree.com)

**Michael Wokuluk**

Fifth Avenue Station  
Lic #01972342

619-243-8459

[mwokuluk@qfcree.com](mailto:mwokuluk@qfcree.com)

1495 Pacific Highway, Suite 450, San Diego, CA 92101 | (619) 243-8454 | [www.qfcree.com](http://www.qfcree.com)

The information contained herein has been obtained from sources considered to be reliable, but no guarantee of its accuracy is made by this company. In addition, no representation is made respecting zoning, condition of title, dimensions, or any matters of a legal or environmental nature. Such matters should be referred to legal counsel for determination. Terms and conditions are subject to change without prior notice. Subject to errors and omissions.